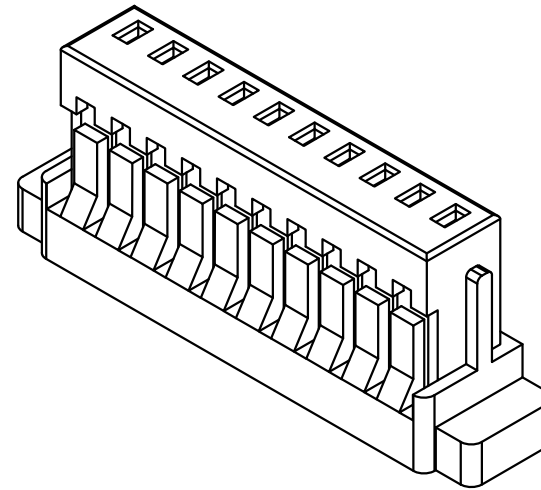
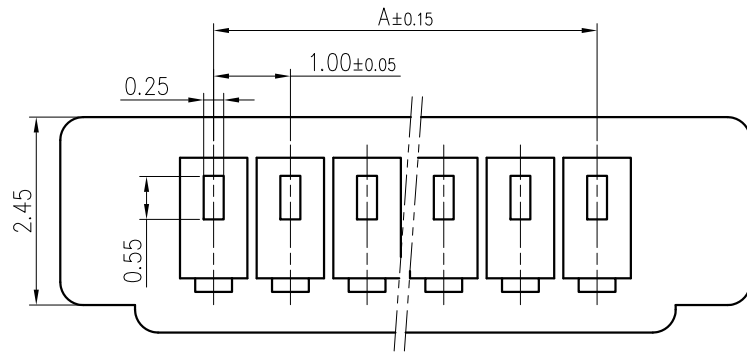


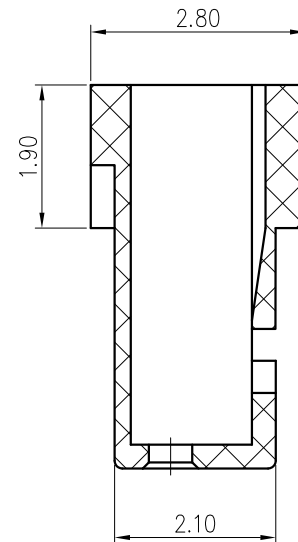
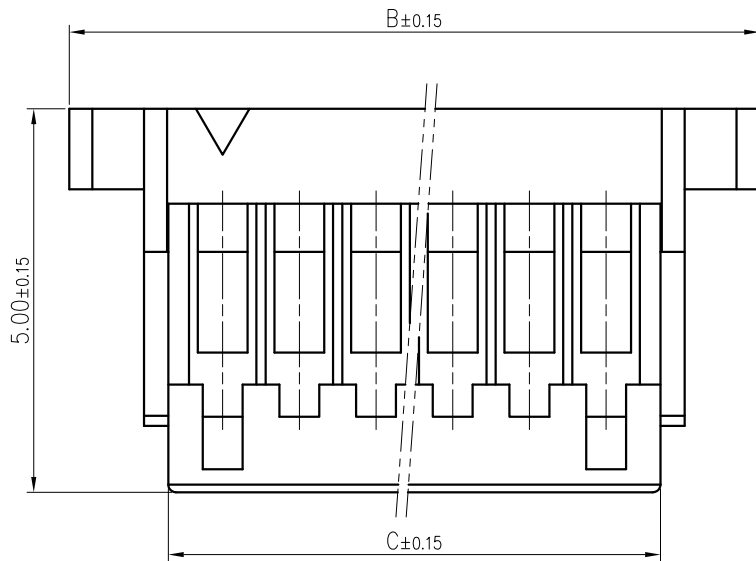
| 标记<br>MARK. | 更改内容<br>MODIFICATION | 日期<br>DATE | 修改<br>DRAW | 核准<br>APPROVE |
|-------------|----------------------|------------|------------|---------------|
|             |                      |            |            |               |
|             |                      |            |            |               |



技术要求Specification:

- 1、材质Material: PA66 UL94V-0;
- 2、塑件表面平整光洁, 无明显的毛刺、气泡、变形、浇口拉伤、缺料等不良现象。

Plastic surface smooth and clean, no obvious burrs, bubbles, distortion, gate strain, lack of material and other undesirable phenomena.



| 线数 | 型号          | 尺寸    |       |       |
|----|-------------|-------|-------|-------|
|    |             | A     | B     | C     |
| 2  | SH10000-2Y  | 1.00  | 5.00  | 2.40  |
| 3  | SH10000-3Y  | 2.00  | 6.00  | 3.40  |
| 4  | SH10000-4Y  | 3.00  | 7.00  | 4.40  |
| 5  | SH10000-5Y  | 4.00  | 8.00  | 5.40  |
| 6  | SH10000-6Y  | 5.00  | 9.00  | 6.40  |
| 7  | SH10000-7Y  | 6.00  | 10.00 | 7.40  |
| 8  | SH10000-8Y  | 7.00  | 11.00 | 8.40  |
| 9  | SH10000-9Y  | 8.00  | 12.00 | 9.40  |
| 10 | SH10000-10Y | 9.00  | 13.00 | 10.40 |
| 11 | SH10000-11Y | 10.00 | 14.00 | 11.40 |
| 12 | SH10000-12Y | 11.00 | 15.00 | 12.40 |
| 13 | SH10000-13Y | 12.00 | 16.00 | 13.40 |
| 14 | SH10000-14Y | 13.00 | 17.00 | 14.40 |
| 15 | SH10000-15Y | 14.00 | 18.00 | 15.40 |
| 16 | SH10000-16Y | 15.00 | 19.00 | 16.40 |
| 17 | SH10000-17Y | 16.00 | 20.00 | 17.40 |
| 18 | SH10000-18Y | 17.00 | 21.00 | 18.40 |
| 19 | SH10000-19Y | 18.00 | 22.00 | 19.40 |
| 20 | SH10000-20Y | 19.00 | 23.00 | 20.40 |

| TOLERANCE UNLESS OTHERWISE SPECIFIED |         | *: Inspection Item |                              |     |      |
|--------------------------------------|---------|--------------------|------------------------------|-----|------|
| .X±0.30                              | X.° ±1° | (NO.)              | :Cp/Cpk and SPC Control Item |     |      |
| .XX±0.20                             | .X° ±   |                    |                              | 材料  | PA66 |
| .XXX±0.10                            | .XX° ±  | 料厚                 |                              | 单位  | m m  |
| 制图                                   |         | 料宽                 |                              | 版本  | A    |
| 审核                                   |         | 日期                 |                              | 角法  |      |
| 批准                                   |         |                    |                              | 比例  | 1:1  |
|                                      |         |                    |                              | 规格书 |      |