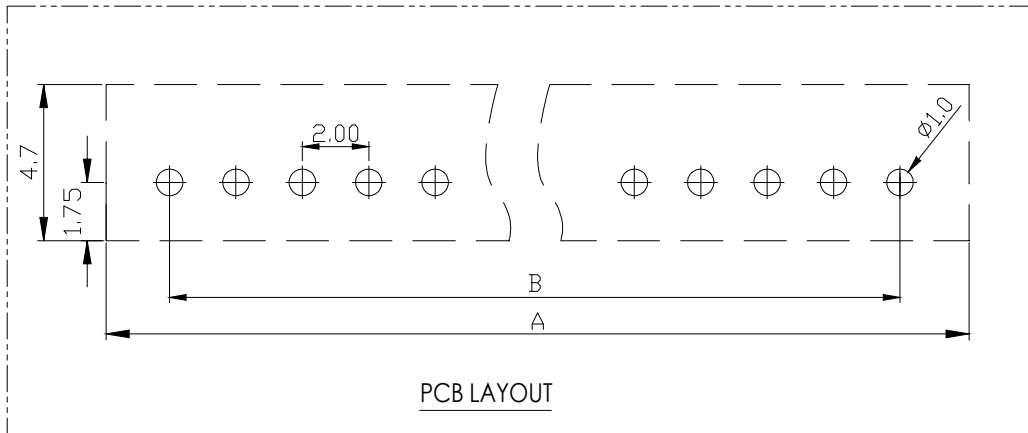


- SPECIFICATIONS**
1. Current Rating: 2A AC, DC
 2. Voltage Rating: 250V AC, DC
 3. Temperature Range: -25°C~ +85°C
 4. Contact Resistance: 20mΩ Max
 5. Insulation Resistance: 1000mΩ Min
 6. Withstanding Voltage: 1000V AC/minute
 7. Material: Wafer Nylon66 UL94-VO
Pin Brass Tin-plated

Circuit	Part NO.	Dimensions mm	
		A	B
2	XD-PH-2A-G-XX	2.00	6.00
3	XD-PH-3A-G-XX	4.00	8.00
4	XD-PH-4A-G-XX	6.00	10.00
5	XD-PH-5A-G-XX	8.00	12.00
6	XD-PH-6A-G-XX	10.00	14.00
7	XD-PH-7A-G-XX	12.00	16.00
8	XD-PH-8A-G-XX	14.00	18.00
9	XD-PH-9A-G-XX	16.00	20.00
10	XD-PH-10A-G-XX	18.00	22.00
11	XD-PH-11A-G-XX	20.00	24.00
12	XD-PH-12A-G-XX	22.00	26.00
13	XD-PH-13A-G-XX	24.00	28.00
14	XD-PH-14A-G-XX	26.00	30.00
15	XD-PH-15A-G-XX	28.00	32.00
16	XD-PH-16A-G-XX	30.00	34.00



Ordering Information

XD - PH - N*** - G - **

Pin Type Contact Plating

N: 2.0mm
 A: 4.0mm
 M: 6.0mm
 L: 8.0mm
 H: 10.0mm
 J: 12.0mm
 K: 14.0mm
 L: 16.0mm
 M: 18.0mm
 N: 20.0mm
 P: 22.0mm
 Q: 24.0mm
 R: 26.0mm
 S: 28.0mm
 T: 30.0mm

B: Sn
 C: 20% Sn
 D: 30% Sn
 E: 40% Sn
 F: 50% Sn
 G: 60% Sn
 H: 70% Sn
 I: 80% Sn
 J: 90% Sn

			GENERAL TOLERANCE	制图 DRAWING	09	深圳讯答科技有限公司 ShenzhenXunDaTechnology Co.,Ltd			
			DIM TOL	审核 CHECK					产品名称 TITLE
			X.X ±0.30	批准 APPROVAL		产品料号 PART NO.	XD-PH-NA-G-XX	单位 UNITS	mm
			X.XX ±0.20	比例 SCALE		材料 MATERIAL		页次 SHEET	1/1
			X.XXX ±0.10	投影 Projection					
序号 No.	变更内容 MODIFY CONTENT	日期 MODIFY DATE	Angle ±3.0°						