

CAB531RF: I-PEX MHF 4L LK + SMA STRAIGHT BULKHEAD JACK WITH O-RING RATED TO IP67/68 + Ø1.37MM CABLE, 8GHz

SPECIFICATIONS :

1. I-PEX MHF4L LK PLUG, P/N: 20632-001R-37 + 3615-000.
2.  $\phi 1.37\text{MM}$  COAXIAL CABLE, COLOR: BLACK.
3. SMA STRAIGHT BULKHEAD JACK WITH O-RING RATED TO IP67/68, P/N: RFCT-SMA108-F37.

## ENVIRONMENTAL:

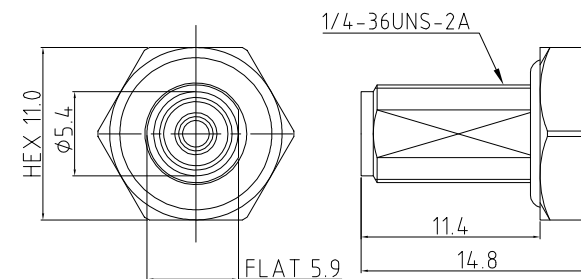
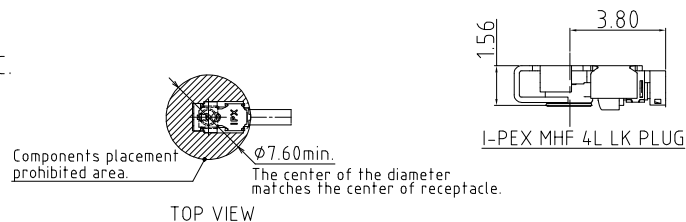
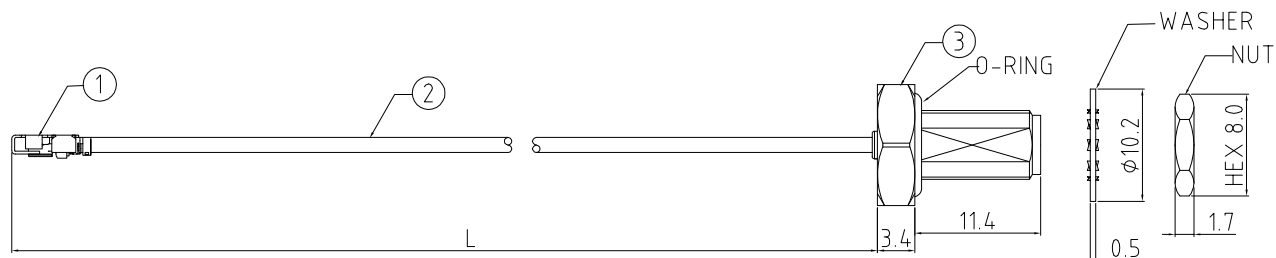
- A. BULKHEAD MOUNTED CONNECTOR (RFCT-SMA108-F37)  
RATED TO THE FOLLOWING SPECIFICATION:
- i. IP6X – DUST TIGHT – NO PARTICLE INGRESS.
  - ii. IPX7 WATERPROOF FOR 30 MINUTES UP TO 1 METER UNDERWATER.
  - iii. IPX8 WATERPROOF FOR 48 HOURS AT 1 METER UNDERWATER.

NOTES:

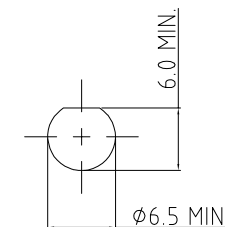
1. WORKING FREQUENCY RANGE: DC-8GHz.
2. OPERATING TEMPERATURE: -40°C TO +85°C.
3. IMPEDANCE: 50 Ohm.

USAGE PRECAUTIONS: CABLES USING 'MICRO' COAX ARE DELICATE:

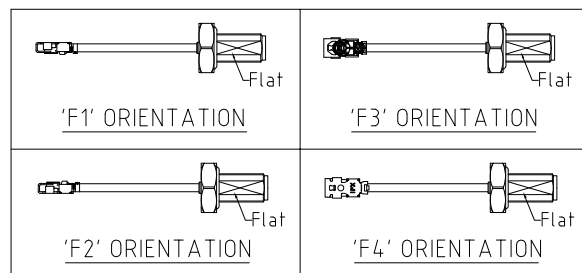
- (i) HANDLE WITH CARE.
- (ii) DO NOT TWIST; APPLY EXCESSIVE FORCES OR SHARP BENDS TO THE CABLE. DO NOT FORCEFULLY DEFORM WIRES.
- (iii) CONSULT CONNECTOR MANUFACTURER'S DATASHEETS FOR DETAILED NOTES ON HANDLING INSTRUCTIONS.



### SMA JACK DETAIL DRAWING



## RECOMMENDED SMA MOUNTING HOLE



## HOW TO ORDER

CAB531RF - X X X X - X X - X - 1

"L" LENGTH IN MM  
eg: 100MM = 0100  
(MIN. 0050-MAX.0400  
STANDARD = 0100, 0150, 0200)  
Tolerance: 50-200mm:  $\pm 5\text{mm}$ .  
201-400mm:  $\pm 7\text{mm}$ .

WASHER AND NUT OPTIONS:  
BLANK = SEPERATELY PACKED (STANDARD)  
A = ASSEMBLED WITH CONNECTOR

ORIENTATION OPTIONS:  
 BLANK = DOES NOT HAVE A FIXED ORIENTATION  
 F1 = MHF CONNECTION DOWN (L=50-200MM)  
 F2 = MHF CONNECTION UP (L=50-200MM)  
 F3 = MHF CONNECTION AND D FLAT SAME ORIENTATION (L=50-200MM)  
 F4 = MHF CONNECTION AND D FLAT OPPOSITE ORIENTATION (L=50-200MM)  
 (SEE NOTES 1, 2, 3 AND DIAGRAMS FOR MORE INFORMATION)