

# CABLE-D37F/FLK50/2,0M/ETHA - Cable



1210706

<https://www.phoenixcontact.com/us/products/1210706>

Please be informed that the data shown in this PDF document is generated from our online catalog. Please find the complete data in the user documentation. Our general terms of use for downloads are valid.



Round cable set; controller: Siemens SIMATIC® ET 200SP HA; connection 1: D-SUB socket strip (1x 37-position); connection 2: IDC/FLK socket strip (1x 50-position); cable length: 2 m

## Commercial data

Item number	1210706
Packing unit	1 pc
Minimum order quantity	1 pc
Note	Made to order (non-returnable)
Sales key	C421
Product key	CK2155
GTIN	4063151282646
Weight per piece (including packing)	460 g
Weight per piece (excluding packing)	460 g
Customs tariff number	85444290
Country of origin	DE

# CABLE-D37F/FLK50/2,0M/ETHA - Cable



1210706

<https://www.phoenixcontact.com/us/products/1210706>

## Technical data

### Product properties

Product type	System cable
--------------	--------------

### Environmental and real-life conditions

#### Ambient conditions

Degree of protection	IP00
Degree of protection (Installation location)	≥ IP54 (Installation location)
Ambient temperature (operation)	-40 °C ... 70 °C (fixed installation) -10 °C ... 70 °C (flexible installation)
Ambient temperature (storage/transport)	-40 °C ... 80 °C
Altitude	≤ 2000 m

### Electrical properties

Operating voltage (AC)	≤ 30 V AC
Operating voltage (DC)	≤ 60 V DC
Nominal operating mode	100% operating factor
Current (Per path, 50°C)	≤ 1 A (Uncoiled, see derating)
Current (Per path, 70°C)	≤ 0.6 A (Uncoiled, see derating)

#### Supported controller SIEMENS ET 200SP HA

Suitable terminal block	6DL1193-6TP00-0BH1
	6DL1193-6TP00-0DH1
	6DL1193-6TP00-0BM1
	6DL1193-6TP00-0DM1
Suitable I/O module	6DL1131-6BL00-0PH1 (Terminal Block H1/M1)
	6DL1132-6BL00-0PH1 (Terminal Block H1/M1)

### Cable/line

Cable length	2 m
--------------	-----

#### 50X0.14 [PVC]

UL AWM Style	2464/1061
Number of positions	50
Shielded	no
Cable type	50X0.14 [PVC]
Conductor type	Round cable set
Conductor structure signal line	7x 0.16 mm
AWG signal line	26
Conductor cross section	50x 0.14 mm²
Wire diameter incl. insulation	1 mm ±0.03 mm
External cable diameter	10.3 mm ±0.4 mm
Outer sheath, material	Semi-rigid PVC

# CABLE-D37F/FLK50/2,0M/ETHA - Cable



1210706

<https://www.phoenixcontact.com/us/products/1210706>

External sheath, color	gray
Conductor material	Tin-plated Cu litz wires
Cable resistance	$\leq 145 \Omega/\text{km}$ (20 °C)
Insulation resistance	$\geq 20 \text{ M}\Omega \cdot \text{km}$ (20 °C)
Smallest bending radius, fixed installation	86 mm
Smallest bending radius, movable installation	161 mm
Max. bending cycles	5000 (at a radius of $\geq 15 \times$ outside diameter)
Halogen-free	no
Flame resistance	IEC 60332-1-2 (raw cable)
	VDE 0842, Part 332-1-2 (raw cable)
	IEC 60332-3-22 (raw cable)
	UL VW-1
	CSA FT-1
Resistance to oil	can withstand occasional splashes (raw cable)

## color code

IDC/FLK50 (1)	D-SUB37 (17) = black
IDC/FLK50 (2)	D-SUB37 (17) = brown
IDC/FLK50 (3)	D-SUB37 (1) = red
IDC/FLK50 (4)	D-SUB37 (2) = orange
IDC/FLK50 (5)	D-SUB37 (3) = yellow
IDC/FLK50 (6)	D-SUB37 (4) = green
IDC/FLK50 (7)	D-SUB37 (5) = blue
IDC/FLK50 (8)	D-SUB37 (6) = violet
IDC/FLK50 (9)	D-SUB37 (7) = gray
IDC/FLK50 (10)	D-SUB37 (8) = white
IDC/FLK50 (11)	D-SUB37 (36) = white-black
IDC/FLK50 (12)	D-SUB37 (36) = white-brown
IDC/FLK50 (13)	D-SUB37 (17) = white-red
IDC/FLK50 (14)	D-SUB37 (17) = white-orange
IDC/FLK50 (15)	D-SUB37 (9) = white-yellow
IDC/FLK50 (16)	D-SUB37 (10) = white-green
IDC/FLK50 (17)	D-SUB37 (11) = white-blue
IDC/FLK50 (18)	D-SUB37 (12) = white-violet
IDC/FLK50 (19)	D-SUB37 (13) = white-gray
IDC/FLK50 (20)	D-SUB37 (14) = brown-black
IDC/FLK50 (21)	D-SUB37 (15) = brown-red
IDC/FLK50 (22)	D-SUB37 (16) = brown-orange
IDC/FLK50 (23)	D-SUB37 (36) = brown-yellow
IDC/FLK50 (24)	D-SUB37 (36) = brown-green
IDC/FLK50 (25)	D-SUB37 (18) = brown-blue
IDC/FLK50 (26)	D-SUB37 (18) = brown-violet
IDC/FLK50 (27)	D-SUB37 (20) = brown-gray
IDC/FLK50 (28)	D-SUB37 (21) = brown-white

# CABLE-D37F/FLK50/2,0M/ETHA - Cable



1210706

<https://www.phoenixcontact.com/us/products/1210706>

IDC/FLK50 (29)	D-SUB37 (22) = green-black
IDC/FLK50 (30)	D-SUB37 (23) = green-brown
IDC/FLK50 (31)	D-SUB37 (24) = green-red
IDC/FLK50 (32)	D-SUB37 (25) = green-orange
IDC/FLK50 (33)	D-SUB37 (26) = green-blue
IDC/FLK50 (34)	D-SUB37 (27) = green-violet
IDC/FLK50 (35)	D-SUB37 (37) = green-gray
IDC/FLK50 (36)	D-SUB37 (37) = green-white
IDC/FLK50 (37)	D-SUB37 (18) = yellow-black
IDC/FLK50 (38)	D-SUB37 (18) = yellow-brown
IDC/FLK50 (39)	D-SUB37 (28) = yellow-red
IDC/FLK50 (40)	D-SUB37 (29) = yellow-orange
IDC/FLK50 (41)	D-SUB37 (30) = yellow-blue
IDC/FLK50 (42)	D-SUB37 (31) = yellow-violet
IDC/FLK50 (43)	D-SUB37 (32) = yellow-gray
IDC/FLK50 (44)	D-SUB37 (33) = yellow-white
IDC/FLK50 (45)	D-SUB37 (34) = gray-black
IDC/FLK50 (46)	D-SUB37 (35) = gray-brown
IDC/FLK50 (47)	D-SUB37 (37) = gray-red
IDC/FLK50 (48)	D-SUB37 (37) = gray-orange

## Connection data

### Connection 1

Connection in acc. with standard	IEC 60807-2
	DIN 41652
Connection method	D-SUB socket strip
Screw thread	UNC 4-40
	M2,5
Number of connections	1
Number of positions	37
Tightening torque	0.2 Nm
Insertion/withdrawal cycles	> 200
Pitch	2.77 mm

### Connection 2

Connection in acc. with standard	based on IEC 60603-13
Connection method	IDC/FLK socket strip
Number of connections	1
Number of positions	50
Insertion/withdrawal cycles	> 50
Pitch	2.54 mm

## Notes

General	For proper use, the specifications of the installation directive (see
---------	-----------------------------------------------------------------------

# CABLE-D37F/FLK50/2,0M/ETHA - Cable



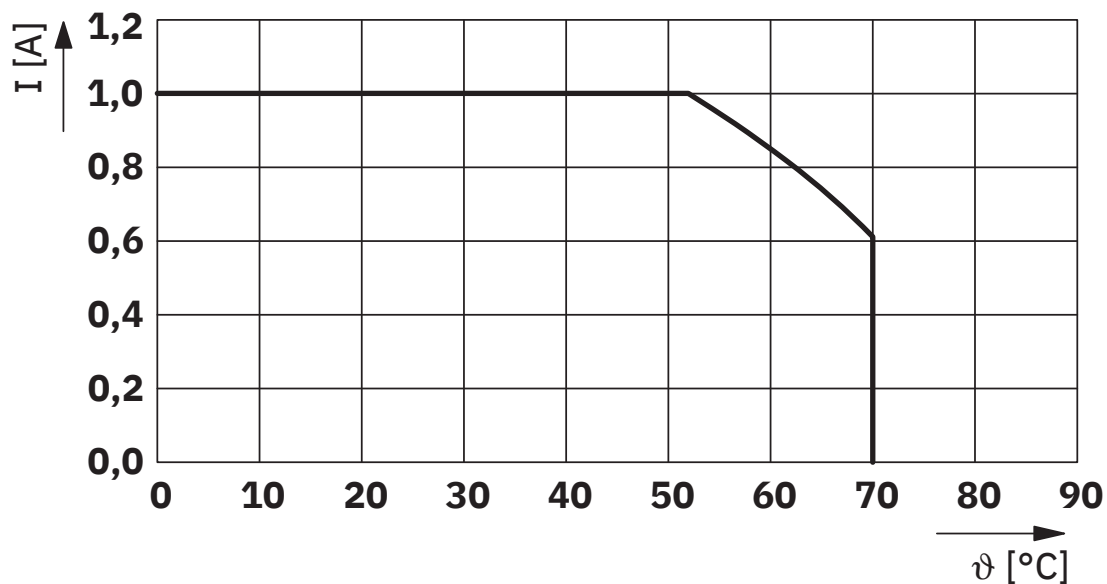
1210706

<https://www.phoenixcontact.com/us/products/1210706>

Downloads) must be observed. For applications or use with third-party products, the specifications, and the safety and warning instructions of the respective third-party manufacturer must also be met.

## Drawings

Diagram



Maximum permissible current per path in uncoiled state

# CABLE-D37F/FLK50/2,0M/ETHA - Cable



1210706

<https://www.phoenixcontact.com/us/products/1210706>

## Approvals

To download certificates, visit the product detail page: <https://www.phoenixcontact.com/us/products/1210706>



### EAC

Approval ID: RU\*-DE.HB\*35.B00385



### UL Listed

Approval ID: FILE E 238705

	Nominal voltage $U_N$	Nominal current $I_N$	Cross section AWG	Cross section $\text{mm}^2$
	125 V	1 A	-	-



### cUL Listed

Approval ID: FILE E 238705

	Nominal voltage $U_N$	Nominal current $I_N$	Cross section AWG	Cross section $\text{mm}^2$
	125 V	1 A	-	-

### cULus Listed

# CABLE-D37F/FLK50/2,0M/ETHA - Cable



1210706

<https://www.phoenixcontact.com/us/products/1210706>

## Classifications

### ECLASS

ECLASS-11.0	27242220
ECLASS-12.0	27242220
ECLASS-13.0	27242220

### ETIM

ETIM 8.0	EC000237
----------	----------

### UNSPSC

UNSPSC 21.0	26121600
-------------	----------



# CABLE-D37F/FLK50/2,0M/ETHA - Cable



1210706

<https://www.phoenixcontact.com/us/products/1210706>

## Environmental product compliance

REACH SVHC	Lead 7439-92-1
China RoHS	Environmentally Friendly Use Period = 50 years
	For information on hazardous substances, refer to the manufacturer's declaration available under "Downloads"

# CABLE-D37F/FLK50/2,0M/ETHA - Cable



1210706

<https://www.phoenixcontact.com/us/products/1210706>

## Accessories

### FLKM-PA-D37/ETHA - Front adapter

1076338

<https://www.phoenixcontact.com/us/products/1076338>



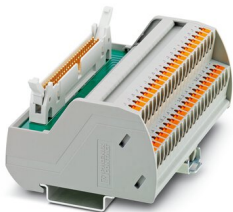
VARIOFACE front adapter for Siemens SIMATIC® ET 200SP HA, with a 37-pos. D-SUB male strip for digital 24 V DC and analog peripheral modules, max. 32 channels can be connected

---

### VIP-2/PT/FLK50/PLC - Passive module

2903803

<https://www.phoenixcontact.com/us/products/2903803>



VARIOFACE interface module, with push-in connection, for 32 channels

# CABLE-D37F/FLK50/2,0M/ETHA - Cable

1210706

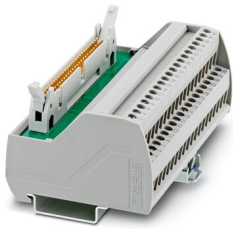
<https://www.phoenixcontact.com/us/products/1210706>



## VIP-2/SC/FLK50/PLC - Passive module

2315227

<https://www.phoenixcontact.com/us/products/2315227>



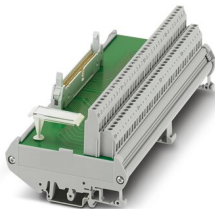
VARIOFACE interface module for 32 channels

---

## FLKM 50/32P/PLC - Passive module

2291121

<https://www.phoenixcontact.com/us/products/2291121>



VARIOFACE interface module, for 32 channels, each with an additional terminal block per signal for a common plus potential

# CABLE-D37F/FLK50/2,0M/ETHA - Cable

1210706

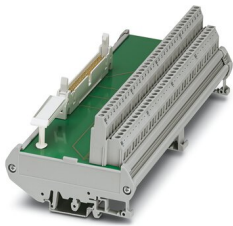
<https://www.phoenixcontact.com/us/products/1210706>



## FLKM 50/32M/PLC - Passive module

2289719

<https://www.phoenixcontact.com/us/products/2289719>



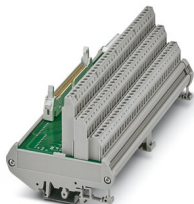
VARIOFACE interface module, for 32 channels, each with an additional terminal block per signal for a common minus potential

---

## FLKMS 50/32IM/PLC - Passive module

2284523

<https://www.phoenixcontact.com/us/products/2284523>



VARIOFACE sensor module, for connecting 32 p-n-p sensors

# CABLE-D37F/FLK50/2,0M/ETHA - Cable

1210706

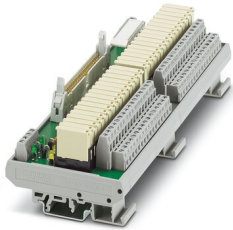
<https://www.phoenixcontact.com/us/products/1210706>



## UMK-32 RM/MR-G24/1/PLC - Active module

2979472

<https://www.phoenixcontact.com/us/products/2979472>



VARIOFACE output module, with 32 miniature relays, 1 N/O contact each, plugged, for 24 V DC (incl. relay)

---

## UM-32 RM/RT-G24/21/PLC - Active module

2968373

<https://www.phoenixcontact.com/us/products/2968373>



VARIOFACE output module, with 32 miniature relays, 1 changeover contact, plugged, for 24 V DC (including relays)

# CABLE-D37F/FLK50/2,0M/ETHA - Cable

1210706

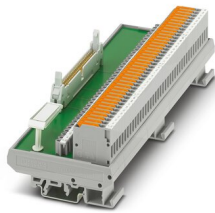
<https://www.phoenixcontact.com/us/products/1210706>



## FLKM 50/KDS3-MT/PPA/PLC - Passive module

2290614

<https://www.phoenixcontact.com/us/products/2290614>



VARIOFACE interface module, for 32 channels with knife disconnect terminal blocks and test sockets to the peripherals and the system

---

Phoenix Contact 2023 © - all rights reserved

<https://www.phoenixcontact.com>

Phoenix Contact USA  
586 Fulling Mill Road  
Middletown, PA 17057, United States  
(+717) 944-1300  
[info@phoenixcon.com](mailto:info@phoenixcon.com)