

100505L ✓ ACTIVE

DEUTSCH

TE Internal #: 100505L

Connector Contacts, Socket, Gold, Gold, Size Size 12, 14 – 12 AWG

Wire Size, 2.5 – 4 mm<sup>2</sup> Wire Size, Crimp

[View on TE.com >](#)



Connectors > Rectangular Connectors > Connector Contacts



Contact Type: **Socket**

Contact Mating Area Plating Material: **Gold**

Wire Contact Termination Area Plating Material: **Gold**

Contact Size: **Size 12**

Wire Size: **14 – 12 AWG**

## Features

### Contact Features

Contact Type	Socket
Contact Mating Area Plating Material	Gold
Wire Contact Termination Area Plating Material	Gold
Contact Size	Size 12
Contact Current Rating (Max)	23 A

### Termination Features

Termination Method to Wire & Cable	Crimp
------------------------------------	-------

### Dimensions

Wire Size	2.5 – 4 mm <sup>2</sup>
-----------	-------------------------

## Product Compliance

[For compliance documentation, visit the product page on TE.com>](#)

EU RoHS Directive 2011/65/EU	Compliant with Exemptions
EU ELV Directive 2000/53/EC	Compliant with Exemptions
China RoHS 2 Directive MIIT Order No 32, 2016	Restricted Materials Above Threshold
EU REACH Regulation (EC) No. 1907/2006	Current ECHA Candidate List: JUNE 2023 (235) Candidate List Declared Against: JAN 2023 (233)



SVHC > Threshold:

Pb (1.2% in Contact Lead-Copper Alloy)

**Article Safe Usage Statements:**

Do not eat, drink or smoke when using this product. Wash thoroughly after handling. Recycle if possible and dispose of the article by following all applicable governmental regulations relevant to your geographic location.

Halogen Content

Low Halogen - Br, Cl, F, I < 900 ppm per homogenous material. Also BFR/CFR/PVC Free

Solder Process Capability

Not reviewed for solder process capability

**Product Compliance Disclaimer**

This information is provided based on reasonable inquiry of our suppliers and represents our current actual knowledge based on the information they provided. This information is subject to change. The part numbers that TE has identified as EU RoHS compliant have a maximum concentration of 0.1% by weight in homogenous materials for lead, hexavalent chromium, mercury, PBB, PBDE, DBP, BBP, DEHP, DIBP, and 0.01% for cadmium, or qualify for an exemption to these limits as defined in the Annexes of Directive 2011/65/EU (RoHS2). Finished electrical and electronic equipment products will be CE marked as required by Directive 2011/65/EU. Components may not be CE marked. Additionally, the part numbers that TE has identified as EU ELV compliant have a maximum concentration of 0.1% by weight in homogenous materials for lead, hexavalent chromium, and mercury, and 0.01% for cadmium, or qualify for an exemption to these limits as defined in the Annexes of Directive 2000/53/EC (ELV). Regarding the REACH Regulation, the information TE provides on SVHC in articles for this part number is based on the latest European Chemicals Agency (ECHA) 'Guidance on requirements for substances in articles' posted at this URL: <https://echa.europa.eu/guidance-documents/guidance-on-reach>

## Compatible Parts

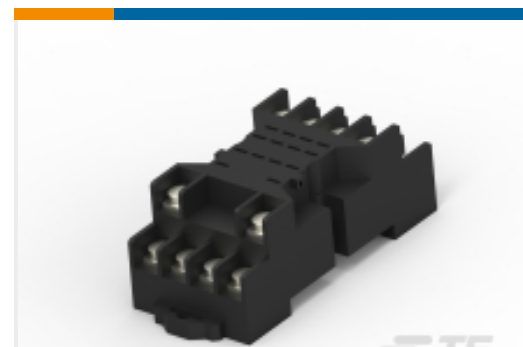


TE Part # 0641-3-1231L  
CONT PIN

## Customers Also Bought



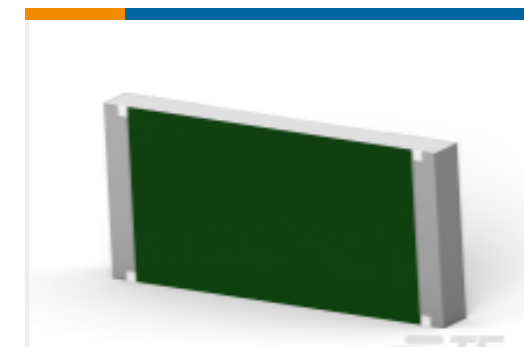
TE Part #320631  
TERMINAL,PIDG R 16-14HD 6



TE Part #2-1419106-6  
27E894=SOCKET,KH,14,SCW,POLY,N



TE Part #534206-3  
06 MODII VRT DR CE 100/115



TE Part #1-2176404-7  
3550 62K 1%



TE Part #322338  
DIAMOND GRIP 16-14 HT R 10



TE Part #7-1393122-1  
KHAU-17D16-24=KH



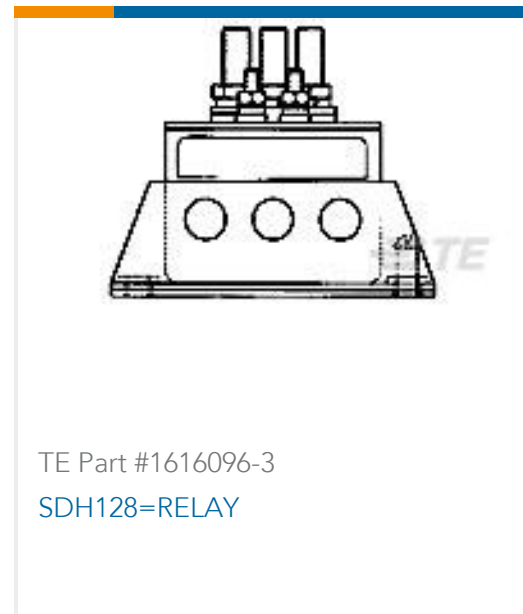
TE Part #31772  
TERMINAL,DG R 12-10 1/4



TE Part #5-1393122-0  
KHAU-17D11L-24=KH



TE Part #5-1393159-1  
20C426=SPRING,HOLD-DOWN,K10,.0



TE Part #1616096-3  
SDH128=RELAY

## Documents

### Product Drawings

#### CONT SOC ASSY

English

### CAD Files

#### 3D PDF

3D

#### Customer View Model

[ENG\\_CVM\\_CVM\\_100505L\\_99.2d\\_dxf.zip](#)

English

#### Customer View Model

[ENG\\_CVM\\_CVM\\_100505L\\_99.3d\\_igs.zip](#)

English

#### Customer View Model

[ENG\\_CVM\\_CVM\\_100505L\\_99.3d\\_stp.zip](#)

English

By downloading the CAD file I accept and agree to the [Terms and Conditions](#) of use.