

Data sheet

28578.6 KDS-DEG 16-17 GR



Seal, Mounting type: Plug in, Length x width: 42.8 mm, Max. cable diameter: 17 mm, IP 66, Colour: Grey

RAL: Ähnlich 7035

Business data

Article number	28578.6
Article name	KDS-DEG 16-17 GR
GTIN (EAN)	4044211215286
Packaging unit	10
Quantity unit	PC
Weight per piece (not including packaging)	29.7 g
Weight per piece (including packaging)	30.1 g
Unit of weight	G
Customs number	39259020
Country of origin	DE
Product description	Sealing Element
Colour	Grey

Technical data

Dimensions

Length	42.8 mm
Width	42.8 mm
Height	17.7 mm

Materials

Material	TPE
Flammability class UL 94	V-0
Working temperature, min.	-40 °C
Working temperature, max.	90 °C
Halogen-free	✓
Silicone-free	✓

Further technical data

Mounting type	Plug in
Degree of protection	IP66
Strain relief	✓
Cable diameter, min.	16 mm
Cable diameter, max.	17 mm
NEMA Type	1, 12, 4x (indoor use only)
Number of wires	1

Environmental Product Compliance

REACH Conform	yes
REACH Reference date	2023-06-14
REACH Candidate Substance Note	No
RoHS Conform	yes

Approvals

Standards and regulations

Standards / specifications	Strain relief complying with DIN EN 62444
----------------------------	---

cUL Recognized

cUL approval	C22.2 No. 14-18
--------------	-----------------

cUL File Number	E489821
-----------------	---------

cUL Recognized	1
----------------	---

UL Recognized

UL approval	UL 508A
-------------	---------

UL File Number	E489821
----------------	---------

UL Recognized	1
---------------	---

UL Type Rating	1, 12, 4x (indoor use only)
----------------	-----------------------------

German Lloyd approval

DNV GL Certificate number	TAE00003V7
---------------------------	------------

DNV GL Location Classes	Temperature: -40°C to 120°C, Humidity: B, Vibration: B, Ingress protection: IP66
-------------------------	--

DNV GL approval granted	1
-------------------------	---

Media



Accessories

Inlays



Cable entry, Inlay, Mounting type: Plug in, IP 66, Colour: Black

Article number	Article name	GTIN (EAN)	Packaging unit
<u>28516.4</u>	KDS-Inlay 1 BK	4044211210847	5 ST



Cable entry, Inlay, Mounting type: Plug in, IP 66, Colour: Black

Article number	Article name	GTIN (EAN)	Packaging unit
<u>28517.4</u>	KDS-Inlay 2 BK	4044211210854	5 ST



Cable entry, Inlay, Mounting type: Plug in, IP 66, Colour: Black

Article number	Article name	GTIN (EAN)	Packaging unit
<u>28518.4</u>	KDS-Inlay 4 BK	4044211210861	5 ST



Cable entry, Inlay, Mounting type: Plug in, IP 66, Colour: Black

Article number	Article name	GTIN (EAN)	Packaging unit
<u>28519.4</u>	KDS-Inlay 6 BK	4044211210014	5 ST

Screw frame



Cable entry with foamed-in seal, Mounting type: Screws, Length: 153 mm, Width: 70 mm, IP 66, Colour: Black

Article number	Article name	GTIN (EAN)	Packaging unit
<u>28504.4</u>	KDS-SR 10/24 BK	4044211210809	1 ST



Cable entry with foamed-in seal, Mounting type: Screws, Length: 106 mm, Width: 70 mm, IP 66, Colour: Black

Article number	Article name	GTIN (EAN)	Packaging unit
<u>28500.4</u>	KDS-SR 6/10 BK	4044211210021	1 ST

28578.6 KDS-DEG 16-17 GR

Screw frame



Cable entry with foamed-in seal, Mounting type: Screws, Length: 126 mm, Width: 70 mm, IP 66, Colour: Black

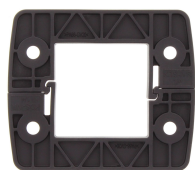
Article number	Article name	GTIN (EAN)	Packaging unit
<u>28502.4</u>	KDS-SR 8/16 BK	4044211210786	1 ST



Cable entry with foamed-in seal, Mounting type: Screws, Length: 81 mm, Width: 70 mm, IP 66, Colour: Black

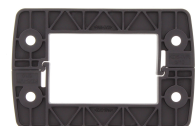
Article number	Article name	GTIN (EAN)	Packaging unit
<u>28506.4</u>	KDS-SR 1-4 BK	4044211210823	1 ST

Locking frame



Inner locking frame, Length: 80 mm, Height: 11.5 mm, Colour: Black

Article number	Article name	GTIN (EAN)	Packaging unit
<u>28507.4</u>	KDS-IVR 1-4 BK	4044211210830	10 ST



Inner locking frame, Length: 105 mm, Height: 11.5 mm, Colour: Black

Article number	Article name	GTIN (EAN)	Packaging unit
<u>28501.4</u>	KDS-IVR 6/10 BK	4044211210779	10 ST



Inner locking frame, Length: 125 mm, Height: 11.5 mm, Colour: Black

Article number	Article name	GTIN (EAN)	Packaging unit
<u>28503.4</u>	KDS-IVR 8/16 BK	4044211210793	10 ST



Inner locking frame, Length: 152 mm, Height: 11.5 mm, Colour: Black

Article number	Article name	GTIN (EAN)	Packaging unit
<u>28505.4</u>	KDS-IVR 10/24 BK	4044211210816	10 ST

28578.6 KDS-DEG 16-17 GR



Split cable gland including counter nut, Thread type: metric, Material: PA 6.6, Protection: IP 66, Colour: Black

Article number	Article name	GTIN (EAN)	Packaging unit
<u>28613.4</u>	KDS-KV M40 BK	4044211208967	5 ST



Cable entry set, IP66, Consisting of: 1 x KDS-SR 6/10, 1 x KDS-Inlay 2, 1 x KDS-Inlay 6

Article number	Article name	GTIN (EAN)	Packaging unit
<u>28603.4</u>	KDS-Set 6/10 BK	4044211216191	1 ST



Round cable entry, Material: polyamide PA 6.6, glass-fibre reinforced | TPE, Colour: Black

Article number	Article name	GTIN (EAN)	Packaging unit
<u>28774.4</u>	KDS-R 40-63 BK	4044211234546	5 ST



Cable entry with foamed-in seal, Mounting type: Screws, Length: 126 mm, Width: 70 mm, IP 66, Colour: Black

Article number	Article name	GTIN (EAN)	Packaging unit
<u>28502.4</u>	KDS-SR 8/16 BK	4044211210786	1 ST



Cable entry set, IP66, Consisting of: 1 x KDS-SR 6/10, 1 x KDS-Inlay 2, 1 x KDS-Inlay 6

Article number	Article name	GTIN (EAN)	Packaging unit
<u>28603.4</u>	KDS-Set 6/10 BK	4044211216191	1 ST



Cable entry set, IP66, Consisting of: 1 x KDSI-SR 1-4 BK, 1 x KDS-Inlay 4 BK

Article number	Article name	GTIN (EAN)	Packaging unit
<u>28890.4</u>	KDSI-SET 1-4 BK	4044211242152	1 ST



Round cable entry, Material: polyamide PA 6.6, glass-fibre reinforced | TPE, Colour: Black

Article number	Article name	GTIN (EAN)	Packaging unit
<u>28774.4</u>	KDS-R 40-63 BK	4044211234546	5 ST

28578.6 KDS-DEG 16-17 GR



Thread and locking adapter, Material: Polyamide PA 6.6, glass-fibre reinforced, Colour: Black

Article number	Article name	GTIN (EAN)	Packaging unit
<u>28775.4</u>	KDS-RGA M40 BK	4044211234553	5 ST



Cable entry with foamed-in seal, Mounting type: Screws, Length: 81 mm, Width: 70 mm, IP 66, Colour: Black

Article number	Article name	GTIN (EAN)	Packaging unit
<u>28506.4</u>	KDS-SR 1-4 BK	4044211210823	1 ST



Cable entry with foamed-in seal, Mounting type: Screws, Length: 106 mm, Width: 70 mm, IP 66, Colour: Black

Article number	Article name	GTIN (EAN)	Packaging unit
<u>28500.4</u>	KDS-SR 6/10 BK	4044211210021	1 ST



Cable entry set, IP66, Consisting of: 1 x KDSI-SR 1-4 BK, 1 x KDS-Inlay 4 BK

Article number	Article name	GTIN (EAN)	Packaging unit
<u>28890.4</u>	KDSI-SET 1-4 BK	4044211242152	1 ST



Cable entry set, IP66, Consisting of: 1xKDSI-SR 6/10, 1xKDS-Inlay 2, 1xKDS-Inlay 6

Article number	Article name	GTIN (EAN)	Packaging unit
<u>28891.4</u>	KDSI-SET 6/10 BK	4044211242169	1 ST



Cable entry with TPE seal, Mounting type: Screws, Length: 153 mm, Width: 64 mm, IP 66, Colour: Black

Article number	Article name	GTIN (EAN)	Packaging unit
<u>28883.4</u>	KDSI-SR 10/24 BK	4044211242107	1 ST

28578.6 KDS-DEG 16-17 GR



Cable entry with foamed-in seal, Mounting type: Screws, Length: 81 mm, Width: 70 mm, IP 66, Colour: Black

Article number	Article name	GTIN (EAN)	Packaging unit
<u>28506.4</u>	KDS-SR 1-4 BK	4044211210823	1 ST



Cable entry with TPE seal, Mounting type: Screws, Length: 106 mm, Width: 64 mm, IP 66, Colour: Black

Article number	Article name	GTIN (EAN)	Packaging unit
<u>28881.4</u>	KDSI-SR 6/10 BK	4044211242084	1 ST



Cable entry with TPE seal, Mounting type: Screws, Length: 106 mm, Width: 64 mm, IP 66, Colour: Black

Article number	Article name	GTIN (EAN)	Packaging unit
<u>28881.4</u>	KDSI-SR 6/10 BK	4044211242084	1 ST



Cable entry set, IP66, Consisting of: 1xKDSI-SR 10/24, each 1xKDS-Inlay 2,4,6

Article number	Article name	GTIN (EAN)	Packaging unit
<u>28893.4</u>	KDSI-SET 10/24 BK	4044211242183	1 ST



Cable entry set, IP66, Consisting of: 1xKDSI-SR 6/10, 1xKDS-Inlay 2, 1xKDS-Inlay 6

Article number	Article name	GTIN (EAN)	Packaging unit
<u>28891.4</u>	KDSI-SET 6/10 BK	4044211242169	1 ST



Cable entry set, IP66, Consisting of: 1xKDSI-SR 6/10, 1xKDS-Inlay 2, 1xKDS-Inlay 6

Article number	Article name	GTIN (EAN)	Packaging unit
<u>28891.4</u>	KDSI-SET 6/10 BK	4044211242169	1 ST



Cable entry set, IP66, Consisting of: 1xKDSI-SR 8/16, 2xKDS-Inlay 4

Article number	Article name	GTIN (EAN)	Packaging unit
<u>28892.4</u>	KDSI-SET 8/16 BK	4044211242176	1 ST

28578.6 KDS-DEG 16-17 GR



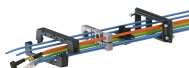
Cable entry set, IP66, Consisting of: 1 x KDS-SR 10/24, 1 each of KDS-Inlay 2,4,6

Article number	Article name	GTIN (EAN)	Packaging unit
28605.4	KDS-Set 10/24 BK	4044211216214	1 ST



Cable entry with TPE seal, Mounting type: Screws, Length: 106 mm, Width: 64 mm, IP 66, Colour: Black

Article number	Article name	GTIN (EAN)	Packaging unit
28881.4	KDSI-SR 6/10 BK	4044211242084	1 ST



Cable entry with TPE seal, Mounting type: Screws, Length: 126 mm, Width: 64 mm, IP 66, Colour: Black

Article number	Article name	GTIN (EAN)	Packaging unit
28882.4	KDSI-SR 8/16 BK	4044211242091	1 ST



Cable entry with TPE seal, Mounting type: Screws, Length: 153 mm, Width: 64 mm, IP 66, Colour: Black

Article number	Article name	GTIN (EAN)	Packaging unit
28883.4	KDSI-SR 10/24 BK	4044211242107	1 ST



Cable entry set, IP66, Consisting of: 1 x KDSI-SR 1-4 BK, 1 x KDS-Inlay 4 BK

Article number	Article name	GTIN (EAN)	Packaging unit
28890.4	KDSI-SET 1-4 BK	4044211242152	1 ST





Cable entry set, IP66, Consisting of: 1xKDSI-SR 6/10, 1xKDS-Inlay 2, 1xKDS-Inlay 6

Article number	Article name	GTIN (EAN)	Packaging unit
28891.4	KDSI-SET 6/10 BK	4044211242169	1 ST



Cable entry set, IP66, Consisting of: 1xKDSI-SR 8/16, 2xKDS-Inlay 4

Article number	Article name	GTIN (EAN)	Packaging unit
28892.4	KDSI-SET 8/16 BK	4044211242176	1 ST

Cable entry set, IP66, Consisting of: 1xKDSI-SR 10/24, each 1xKDS-Inlay 2,4,6				
	Article number	Article name	GTIN (EAN)	Packaging unit
	<u>28893.4</u>	KDSI-SET 10/24 BK	4044211242183	1 ST
Cable entry with TPE seal, Mounting type: Screws, Length: 106 mm, Width: 64 mm, IP 66, Colour: Black				
	Article number	Article name	GTIN (EAN)	Packaging unit
	<u>28881.4</u>	KDSI-SR 6/10 BK	4044211242084	1 ST