

CAB412RF: I-PEX MHF PLUG + S/S SMA FEMALE STRAIGHT BULKHEAD JACK W/O-RING RATED TO IP68/69K + MULTIPLE CABLE SIZES

SPECIFICATIONS :

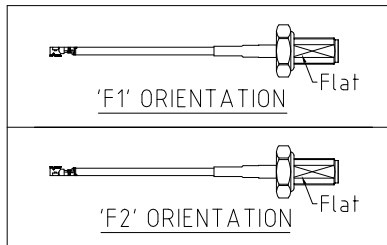
1. I-PEX MHF PLUG, GOLD PLATED, P/N:
FOR RG178 CABLE: 20278-112R-18.
FOR Ø1.13MM CABLE: 20278-112R-13.
FOR Ø1.32MM DS CABLE: 20278-112R-32.
2. COAXIAL CABLE, SEE P/N OPTIONS FOR DETAIL.
3. SMA STRAIGHT BULKHEAD JACK W/O-RING, W/SUS303 STAINLESS STEEL BODY, TESTED TO IP68/69K, P/N: RFCT-SMA061-F78 (WITH SILICON O-RING) OR RFCT-SMA061-F78-1 (WITH EPDM O-RING).

ENVIRONMENTAL:

- A. BULKHEAD MOUNTED CONNECTOR (RFCT-SMA061-F78) TESTED TO THE FOLLOWING SPECIFICATION:
- i. IP6X - DUST TIGHT - NO PARTICLE INGRESS.
 - ii. IPX8 WATERPROOF FOR 48 HOURS AT 1 METER UNDERWATER.
 - iii. IPX9K WATER SPRAY, 14-16L PER MINUTE, AT 8,000-10,000 KPA, AT 100-150MM DISTANCE FOR 30 SECONDS.

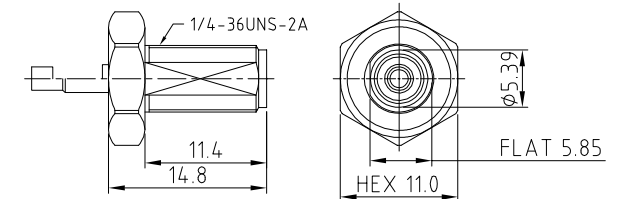
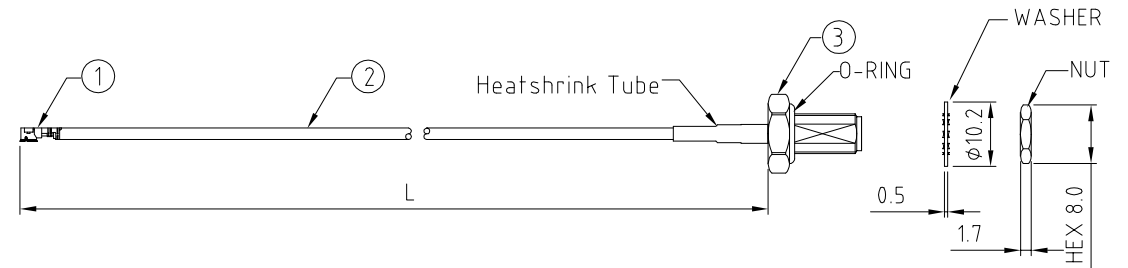
NOTES:

1. THE ORIENTATION OF CONNECTORS ON DRAWING IS FOR REFERENCE ONLY, IF THE ORDER IS LEFT BLANK THE CONNECTOR WILL NOT HAVE FIXED ORIENTATION.
2. FIXED ORIENTATION IS SUGGESTED FOR CABLE LENGTH 25MM TO 100MM. PLEASE SPECIFY THE FIXED ORIENTATIONS FROM THE ORDER CODE (F1, F2, ETC)
3. CONTACT GRADCONN IF THE ORIENTATION YOU REQUIRE IS NOT SHOWN.
4. WORKING FREQUENCY RANGE: DC-3GHz.
5. OPERATING TEMPERATURE: -40°C TO +85°C
6. IMPEDANCE: 50 OHM
7. IF THE CONNECTOR IS USED IN A CORROSIVE ENVIRONMENT, WE RECOMMEND THE CONNECTOR FACE IS PROTECTED WITH A STAINLESS STEEL DUST CAP.
8. PLEASE USE THE RECOMMENDED TORQUE FORCES FOR STAINLESS STEEL CONNECTORS. THIS IS PUBLISHED ON GRADCONN.COM RESOURCES PAGE.



USAGE PRECAUTIONS: CABLES USING 'MICRO' COAX ARE DELICATE:

- (i) HANDLE WITH CARE.
- (ii) DO NOT TWIST; APPLY EXCESSIVE FORCES OR SHARP BENDS TO THE CABLE. DO NOT FORCEFULLY DEFORM WIRES.
- (iii) CONSULT CONNECTOR MANUFACTURER'S DATASHEETS FOR DETAILED NOTES ON HANDLING INSTRUCTIONS.



HOW TO ORDER

CAB412RF - X X X X - X X - X - X - X

"L" LENGTH IN MM:
eg: 100MM = 0100
(MIN. 0050-MAX.0400
STANDARD = 0100, 0150, 0200)
Tolerance: 50mm: ± 2 mm.
51-200mm: ± 5 mm.
201-400mm: ± 7 mm.

CABLE SIZE OPTIONS:

1 = RG178 CABLE, COLOR: BROWN.

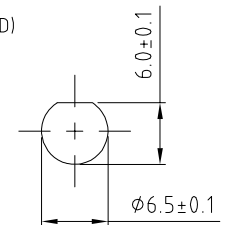
2 = Ø1.13MM CABLE, COLOR: GRAY.

3 = Ø1.32MM DS CABLE, COLOR: GRAY.




O-RING MATERIAL OPTIONS:
S = SILICONE, RED
E = EPDM, BLACK (STANDARD)

WASHER AND NUT OPTIONS:
 BLANK = SEPARATELY PACKED (STANDARD)
 A = ALL ASSEMBLED WITH CONNECTOR

ORIENTATION OPTIONS:
BLANK = DOES NOT HAVE A FIXED ORIENTATION
F1 = MHF CONNECTION DOWN (L=50-200MM)
F2 = MHF CONNECTION UP (L=50-200MM)
(SEE NOTES 1, 2, 3 AND DIAGRAMS FOR MORE INFORMATION)



RECOMMENDED SMA
MOUNTING HOLE

10. 27/06/70 - NYW RELEASE 11. 28/06/70 - NYW RELEASE 12. 28/06/70 - NYW 13. 23/07/70 - NYW 14. 27/06/71 - NYW 15. 05/07/71 - NYW 16. 21/07/72 - NYW 17. 21/07/72 - NYW 18. 08/06/73 - NYW 19. 08/06/73 - NYW	1. 27/06/70 - NYW 2. 28/06/70 - NYW 3. 23/07/70 - NYW 4. 27/06/71 - NYW 5. 05/07/71 - NYW 6. 21/07/72 - NYW 7. 21/07/72 - NYW 8. 08/06/73 - NYW 9. 08/06/73 - NYW	Scale: NTS Drawn: NYW App'd: XXX Date: 8 JUN. '23	THIRD ANGLE  Unstated: X Tolerances: N/A XX N/A XXX N/A ANGLES N/A	 IP67/68 Rated Cables	 www.gradconn.com	Drawing Number: CAB412RF Sheet 1 of 1 Drawing © E and O E
--	---	--	---	---	---	--