





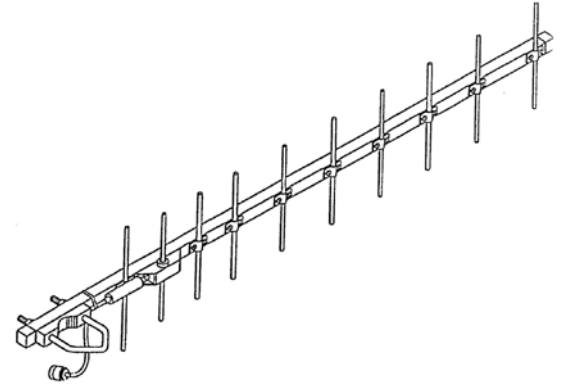


ANTENNA TECHNOLOGIES LIMITED COMPANY

# Model 928-10 Yagi Antenna

## Key Features

-  **“EverSealed”** feed system ensures against system failure due to moisture
-  High strength square aluminum boom for enhanced survivability
-  Flexible feedline interface with custom cable lengths available for easy & reliable installations
-  Easily stacked for 15 to 18 dBd gain. Custom stacking frames and harnesses are available.



Electrical Specifications	928-10
Frequency Range, MHz	896-960
Gain, dBd	9 minimum
Front to Back Ratio, dB	16 minimum; 20 typical
VSWR (50 Ohms)	1.2:1 typical
1.5:1 Bandwidth MHz	64 minimum
3 dB Beamwidth E/H Planes, degrees	49/59
Stacking Distance, E/H, inches	13/11
Maximum Power, watts	50*
Cable type/length	RG58, 1 (.3)
Connector	N Female
Polarization	Vertical

*\*Limited by feedline. Higher power ratings are available as an option.*



Mechanical Specifications	928-10
Number of Elements	6
Boom Length, feet (m)	2 (.58)
Boom Material	.750" by .750 square tube 6061-T6 aluminum
Element Material	.188" diameter 2011-T3 aluminum rod
Mast Diameter, inches, (cm)	1.25-2.00 (3.2-5.1)
Mounting	Rear
Wind Surface Areas, feet	.17 (.016)
Wind Survival, mph (kph)	125 (200)
Weight, pounds (kg)	1.2 (.54)

22560 Glenn Drive #114 | Sterling, Virginia 20164  
[www.atcllc.com](http://www.atcllc.com) [sales@atcllc.com](mailto:sales@atcllc.com)  
Office: 703-450-5517

*ATLC products for military use may be subject to U.S. ITAR EXPORT CONTROLS, an export license may be required.*