

Electrical Properties:

Frequency Range: 2.4~2.5 GHz
 Impedance: 50Ω nominal
 VSWR: <2.0:1
 Gain: *5.0 dBi
 Radiation: Omni
 Polarization: Vertical

*Gain is measured under without flying lead.

Mechanical Properties:

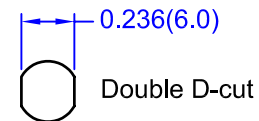
Cable: M17/93-RG178; Harbour Industries
 Cable Length: Standard length L=5 inches.
 or to be specified.

Connector: R/A MMCX Plug(male);
 Nearson 25-03M-TGG

Material:
 Overmold: Polyurethane(Black); BASF
 Swivel: Polyurethane(Black); BASF and
 Polycarbonate(Black); Bayer

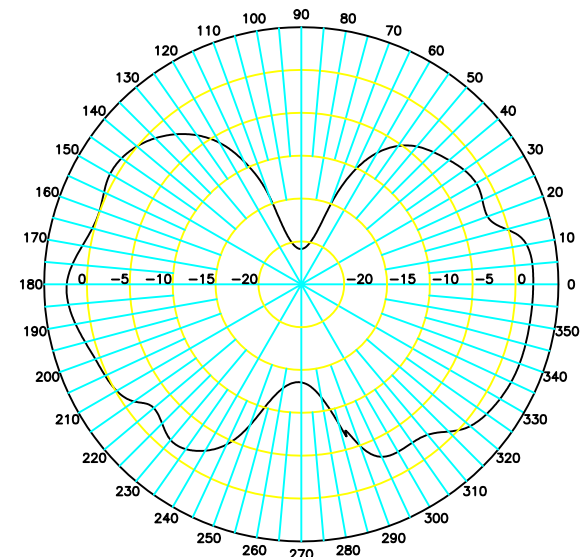
Operation Temp.: -20°C to +65°C
 Storage Temp.: -30°C to +75°C

A-A view-Thread cross-section

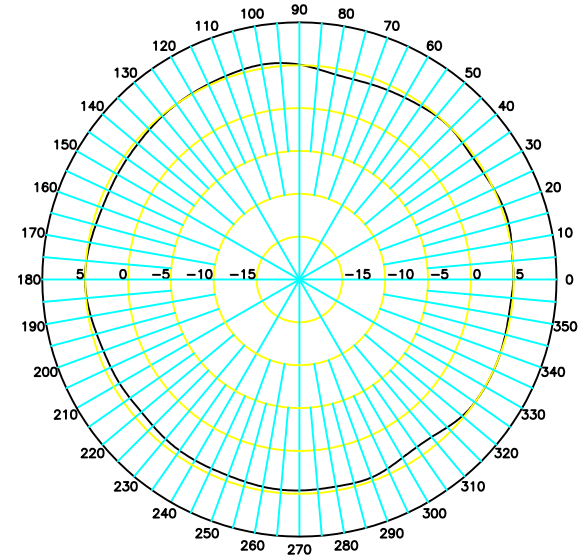


TITLE	2.4GHz Fixed Mount Swivel Antenna - 151 Model	DATE	SHEET
		011305	1 of 2
UNIT	DWG. NO.	S151FL-L-RMM-2450S	
in.(mm)			
SCALE			
None		NEARSON	

E-Plane Pattern @ 2.45GHz




H-Plane Pattern @ 2.45GHz



L (inch)	Attenuation (dB)
3"	0.20 dB
4"	0.27 dB
5"	0.33 dB
6"	0.40 dB
8"	0.53 dB
10"	0.66 dB
12"	0.79 dB

Flying Lead Cable Length v.s. Attenuation Table
Standard M17/93-RG178 Cable Measured @ 2.4GHz

TITLE	2.4GHz Fixed Mount Swivel Antenna - 151 Model	DATE	011305	SHEET	2 of 2
UNIT	DWG. NO.	S151FL-L-RMM-2450S			
in.(mm)					
SCALE					