

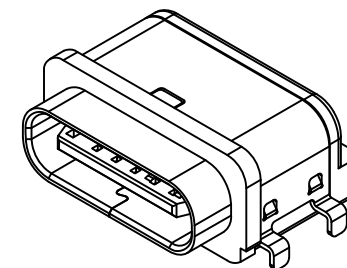
#### Recommended PCB Layout

Thickness 0.80±0.10mm

Tolerance: ±0.05mm

■ Solder Area □ Component Outline

Pin	Signal	Mating Sequence
A5	CC1	Second
A9	Vbus	First
A12	GND	First
B5	CC2	Second
B9	Vbus	First
B12	GND	First
SHELL	GND	



#### Specifications

##### Material

Insulator: LCP, UL 94V-0, Black

Contact: Copper Alloy

Shell: Stainless Steel

Shielding Plate: Stainless Steel

Gasket: Silicone Rubber, Part No.: USBTJ-04,

Shore Hardness 60A

(Gasket+Connector can be ordered separately or together as a KIT - USB4715-GF-A-KIT)

##### Plating

##### Contact

Contact Area: Gold Flash

Solder Tails: Tin over Nickel

Shell: Nickel

Shielding Plate: Nickel

##### Electrical

Current Rating: 3.00A collectively for Vbus pins  
4.25A collectively for GND pins  
1.25A for A5/B5 pin

Voltage Rating: 20V DC

Contact Resistance: 40mΩ max initial.

50mΩ max after test

Dielectric Withstanding Voltage: 100V AC

Insulation Resistance 100MΩ min

##### Mechanical & Environmental

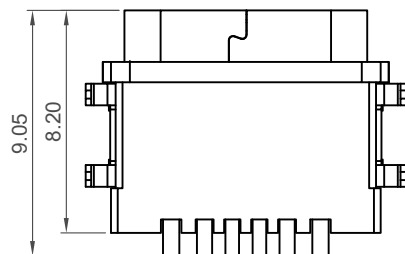
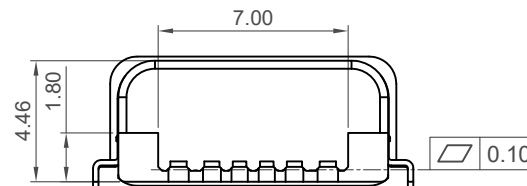
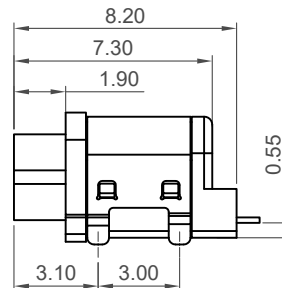
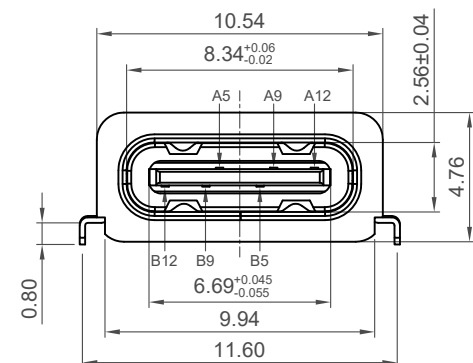
Operating Temperature: -30°C to +85°C

Mating Force: 5 to 20 N.

Unmated Force: 6 to 20 N after test

Durability: 10,000 cycles

Ingress Protection Rating: IP67



#### Ordering Grid

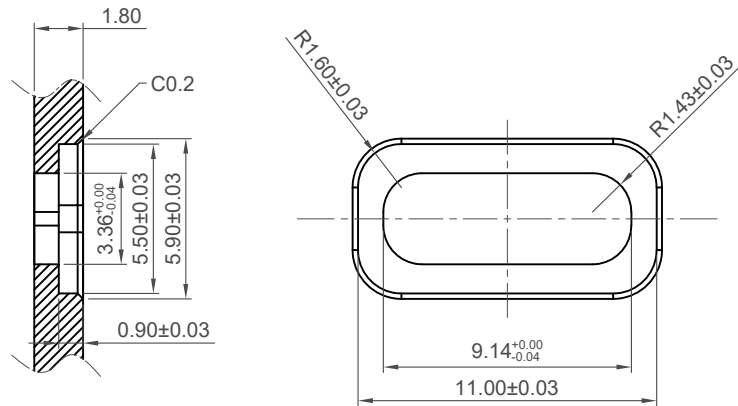
USB4715 = GF = A Request Samples and Quotation

Contact Plating  
GF = Gold Flash

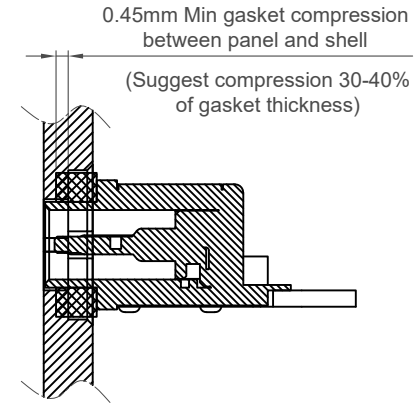
Packing Options  
A = Tape & Reel (700 per reel)

Part Number USB4715		Product Description Type C Receptacle, Horizontal, Mid-Mount, SMT, IP67, For Power Charging Only, 6 Pin	
Drawing Date 4th July 2022			
By CC	Drawing Release	Tolerances (Except as Noted) Length Angle	Units: Metric (mm)
Detail		X.X ± 0.30 X.XX ± 0.25 X.XXX ± 0.10	
Revision Date	A2 14/09/23		
		3rd Angle Projection	
		RoHS COMPLIANT 2011/65/EU Deca-SIDE	
		This drawing is confidential and copyright of Global Connector Technology, Ltd (GCT). This drawing must not be copied or disclosed without written consent. E & OE	
		Not to Scale	Drawn By CC
			Sheet No. 1/4

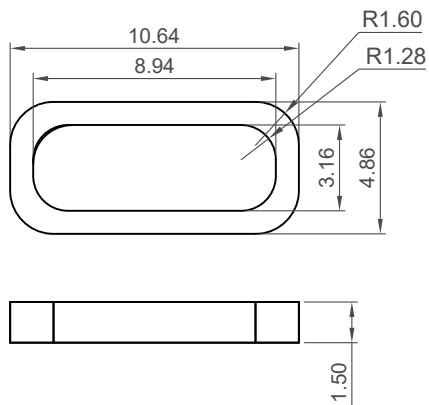
**GCT**  
www.gct.co



**Recommended Panel Spec**



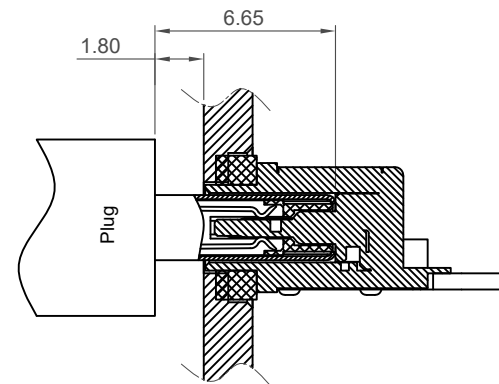
(Suggest compression 30-40% of gasket thickness)




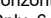


**Recommended Waterproof Gasket**

Gasket Part No.: USBTJ-04

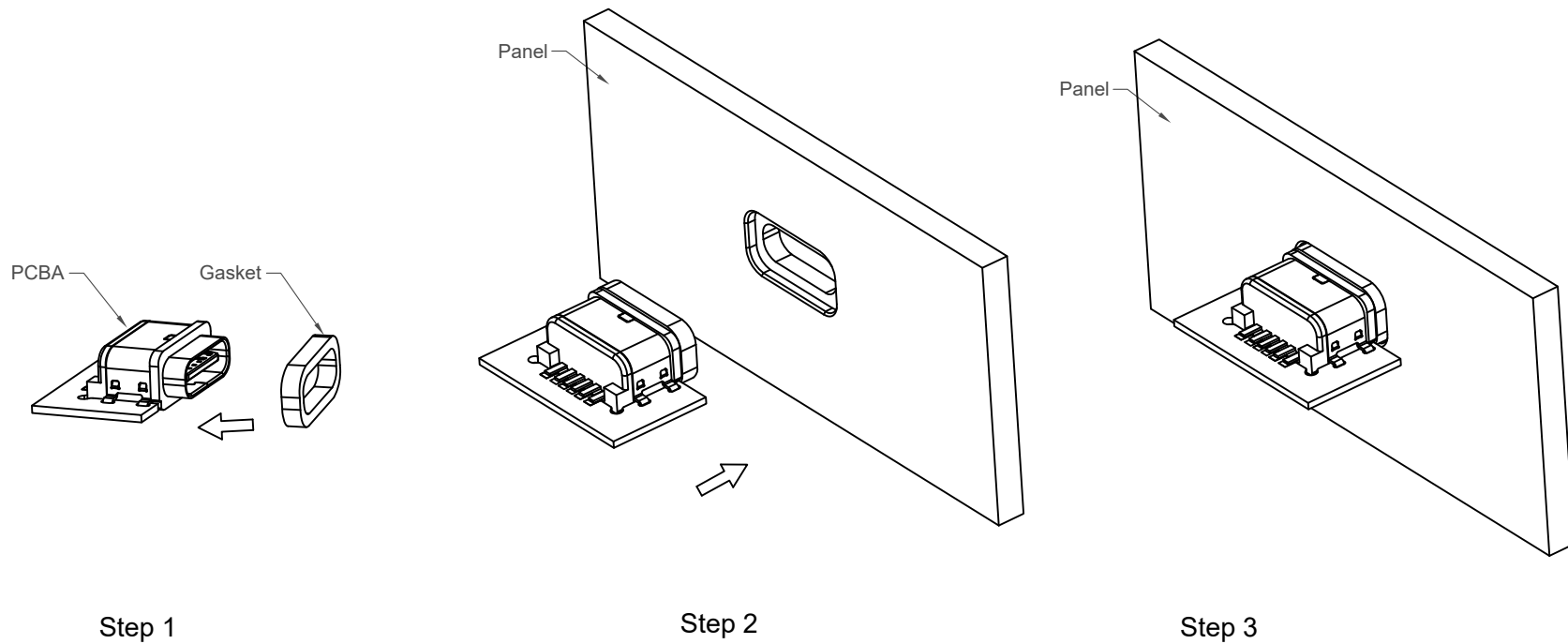
(Gasket+Connector can be ordered separately  
or together as a KIT - USB4715-GF-A-KIT)  
(See separate datasheet for specification)



**Plug and Receptacle Mating View**

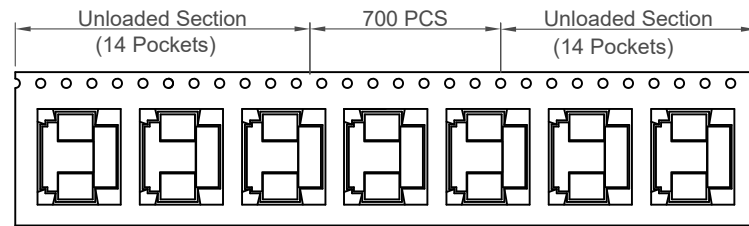
Part Number		Product Description				 <b>www.gct.co</b>
USB4715		Type C Receptacle, Horizontal, Mid-Mount, SMT, IP67, For Power Charging Only, 6 Pin				
Drawing Date						
4th July 2022						
By	CC	Tolerances (Except as Noted)		Units:	  This drawing is confidential and copyright of Global Connector Technology, Ltd (GCT). This drawing must not be copied or disclosed without written consent. E & OE	
Detail	Drawing Release	Length	Angle	Metric (mm)		
Revision	A2	X.X ± 0.30	-	 3rd Angle Projection		
Date	14/09/23	X.XX ± 0.25				
		X.XXX ± 0.10				
Not to Scale		Drawn By		CC	Sheet No.	
					2/4	

**GCT**  
www.gct.co



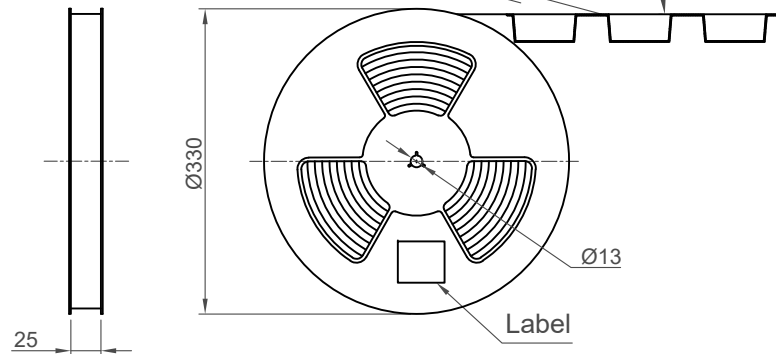
Assembly instruction for Gasket set after Reflow  
Available for Type C Receptacle Waterproof Series

Part Number		Product Description	
USB4715		Type C Receptacle, Horizontal, Mid-Mount, SMT, IP67, For Power Charging Only, 6 Pin	
Drawing Date			
4th July 2022			
By	CC	Tolerances (Except as Noted)	Units:
Detail	Drawing Release	Length	Metric (mm)
Revision	A2	X.X ± 0.30	
Date	14/09/23	X.XX ± 0.25	
		X.XXX ± 0.10	
		-	3rd Angle Projection
		This drawing is confidential and copyright of Global Connector Technology, Ltd (GCT). This drawing must not be copied or disclosed without written consent. E & OE	
		www.gct.co	
Not to Scale		Drawn By	Sheet No.
		CC	3/4

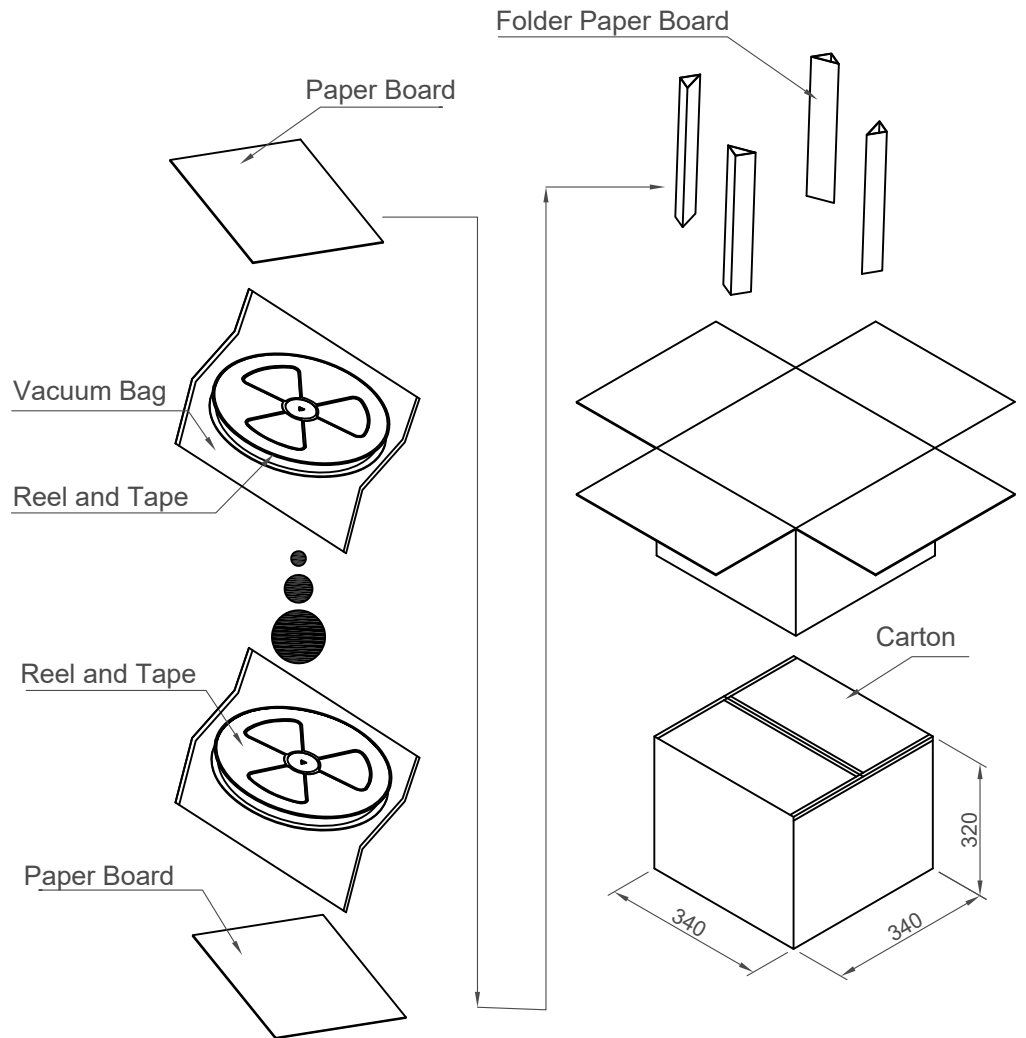
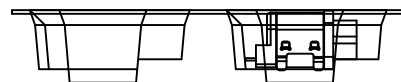
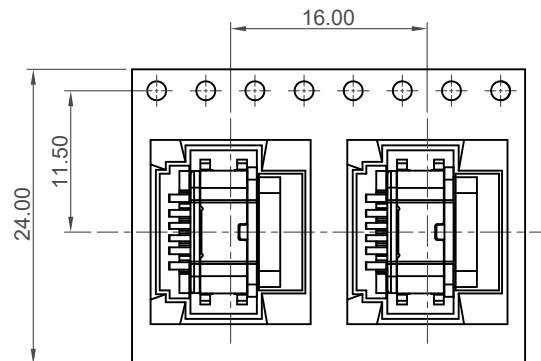


Direction of Unreeling

Peeling Angle 165°~180°



Direction of Unreeling



Pcs / Reel	Reels / Carton	Total Quantity
700	10	7,000 pcs

Part Number USB4715		Product Description Type C Receptacle, Horizontal, Mid-Mount, SMT, IP67, For Power Charging Only, 6 Pin	
Drawing Date 4th July 2022			
By CC	Drawing Release	Tolerances (Except as Noted) Length Angle	Units: Metric (mm)
Detail	A2	-	-
Revision	14/09/23	-	-
Date		-	-



This drawing is confidential and copyright of Global Connector Technology, Ltd (GCT). This drawing must not be copied or disclosed without written consent. E & OE

**GCT**  
www.gct.co

Not to Scale  
Drawn By  
CC  
Sheet No.  
4/4