

## Low Loss MMCX Plug to SMA Male Right Angle Cable Assembly using 100 Series Coax, 3 FT

### LCCA30386-FT3



#### Configuration

- Connector 1: MMCX Plug
- Connector 2: SMA Male Right Angle
- Cable Type: CA-100

#### Features

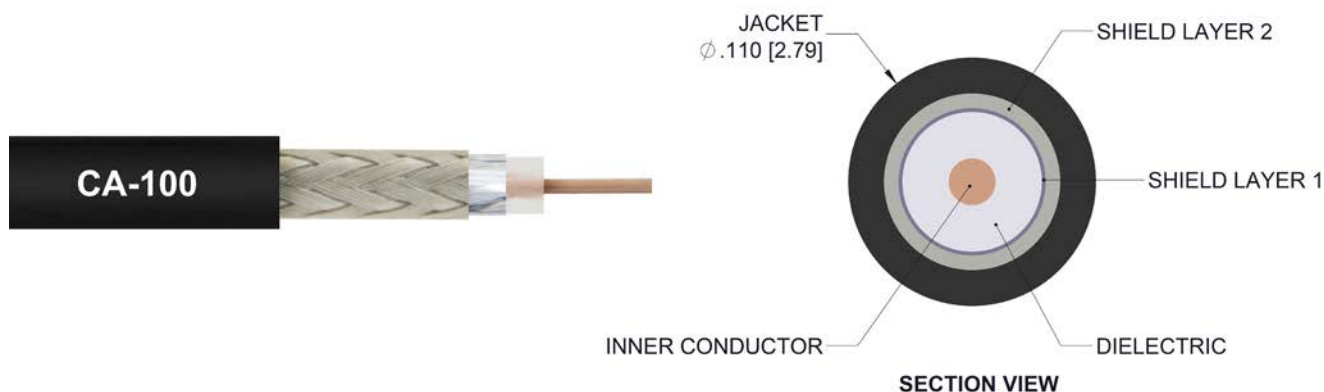
- Max Frequency 5.8 GHz
- LMR-100 Equivalent
- Shielding Effectivity > 90 dB
- 66% Phase Velocity

- Low Insertion Loss
- Double Shielded
- PVC Jacket

#### Applications

- General Purpose
- Laboratory Use
- Antenna Installations

- Land Mobile Radio & Other Communication Systems
- Cellular & Wi-Fi Systems



#### Description

L-com's LCCA30386-FT3 is a low loss MMCX plug to SMA male right angle cable assembly using 100 series coax, 3 FT and ships same-day. The CA-100 coax of this MMCX cable uses the PE dielectric with a VoP of 66%, resulting in very low insertion loss compared to solid dielectrics. These flexible RF cable assemblies are ideal for applications where flexure is required. Our L-com MMCX to SMA cable assembly has a plug to male gender configuration with flexible CA-100 series coax and operates to 5.8 GHz. The double shield of this MMCX cable is layered by tinned copper braid over aluminum tape providing shielding effectiveness greater than 90dB. This right angle SMA cable interface on the CA-100 coax allows for easier connections in tight spaces.

Custom versions of this MMCX plug to MMCX male cable, along with the rest of L-com's other RF assemblies, can also be built and shipped same day. Other available RF cable assembly value added services from L-com include connector orientation or clocking, heat shrink booting and custom labeling. RF testing can also be performed to document the electrical performance of your cable assembly. Contact a sales representative for testing or custom RF cable quotes. Part number LCCA30386-FT3 L-com Low Loss MMCX Plug to SMA Male Right Angle Cable Assembly using 100 Series Coax, 3 FT data sheet PDF includes details of the RF product specifications, CAD drawing(s) and dimensions below.

Low Loss MMCX Plug to SMA Male Right Angle Cable  
Assembly using 100 Series Coax, 3 FT



## LCCA30386-FT3

### Electrical Specifications

Description	Minimum	Typical	Maximum	Units
Frequency Range	DC		5.8	GHz
VSWR			1.5:1	
Velocity of Propagation		66		%
RF Shielding	90			dB
Capacitance		30.8 [101.05]		pF/ft [pF/m]
DC Resistance Inner Conductor		81.07 [265.98]		Ohms/1000ft [Ohms/Km]
DC Resistance Outer Conductor		9.51 [31.2]		Ohms/1000ft [Ohms/Km]

### Specifications by Frequency

Description	F1	F2	F3	F4	F5	Units
Frequency	0.1	0.25	0.5	1	2.5	GHz
Insertion Loss (Typ.)	0.54	0.69	0.84	1.07	1.56	dB

#### Electrical Specification Notes:

The Insertion Loss data above is based on the performance specifications of the coax cable and connectors used in the assembly.  
The Insertion Loss includes an estimated insertion loss of 0.1 dB for the straight connector and 0.2 dB for the right angle connector.

### Mechanical Specifications

#### Cable Assembly

Length	36 in [914.4 mm]
Diameter	0.315 in [8 mm]

#### Cable

Cable Type	CA-100
Impedance	50 Ohms
Inner Conductor Type	Solid
Inner Conductor Material and Plating	Copper Clad Steel
Dielectric Type	PE
Number of Shields	2
Shield Layer 1	Aluminum Tape
Shield Layer 2	Tinned Copper Braid
Jacket Material	PVC, Black
Jacket Diameter	0.11 in [2.79 mm]
One Time Minimum Bend Radius	0.55 in [13.97 mm]
Repeated Minimum Bend Radius	1 in [25.4 mm]

Low Loss MMCX Plug to SMA Male Right Angle Cable  
Assembly using 100 Series Coax, 3 FT



## LCCA30386-FT3

### Connectors

Description	Connector 1	Connector 2
Type	MMCX Plug	SMA Male Right Angle
Specification	BS EN 122340	MIL-STD-348A
Impedance	50 Ohms	50 Ohms
Contact Material and Plating	Brass, Gold	Brass, Gold
Contact Plating Specification	30 µin minimum	50 µin minimum
Dielectric Type	PTFE	PTFE
Outer Conductor Material and Plating	Brass, Gold	
Outer Conductor Plating Specification	3 µin minimum	
Body Material and Plating	Brass, Gold	Brass, Nickel
Body Plating Specification	3 µin minimum	100 µin minimum
Coupling Nut Material and Plating		Brass, Nickel
Coupling Nut Plating Specification		100 µin minimum
Hex Size		5/16 inch
Torque		3 in-lbs 0.34 Nm

### Environmental Specifications

#### Temperature

Operating Range -20 to +70 deg C

**Compliance Certifications** (see [product page](#) for current document)

### Plotted and Other Data

Notes:

Low Loss MMCX Plug to SMA Male Right Angle Cable  
Assembly using 100 Series Coax, 3 FT



## LCCA30386-FT3

### How to Order

Part Number Configuration:

**LCCA30386**

- **xx**

**uu**

Unit of Measure:  
cm = Centimeters  
<blank> = Inches  
Length  
Base Number

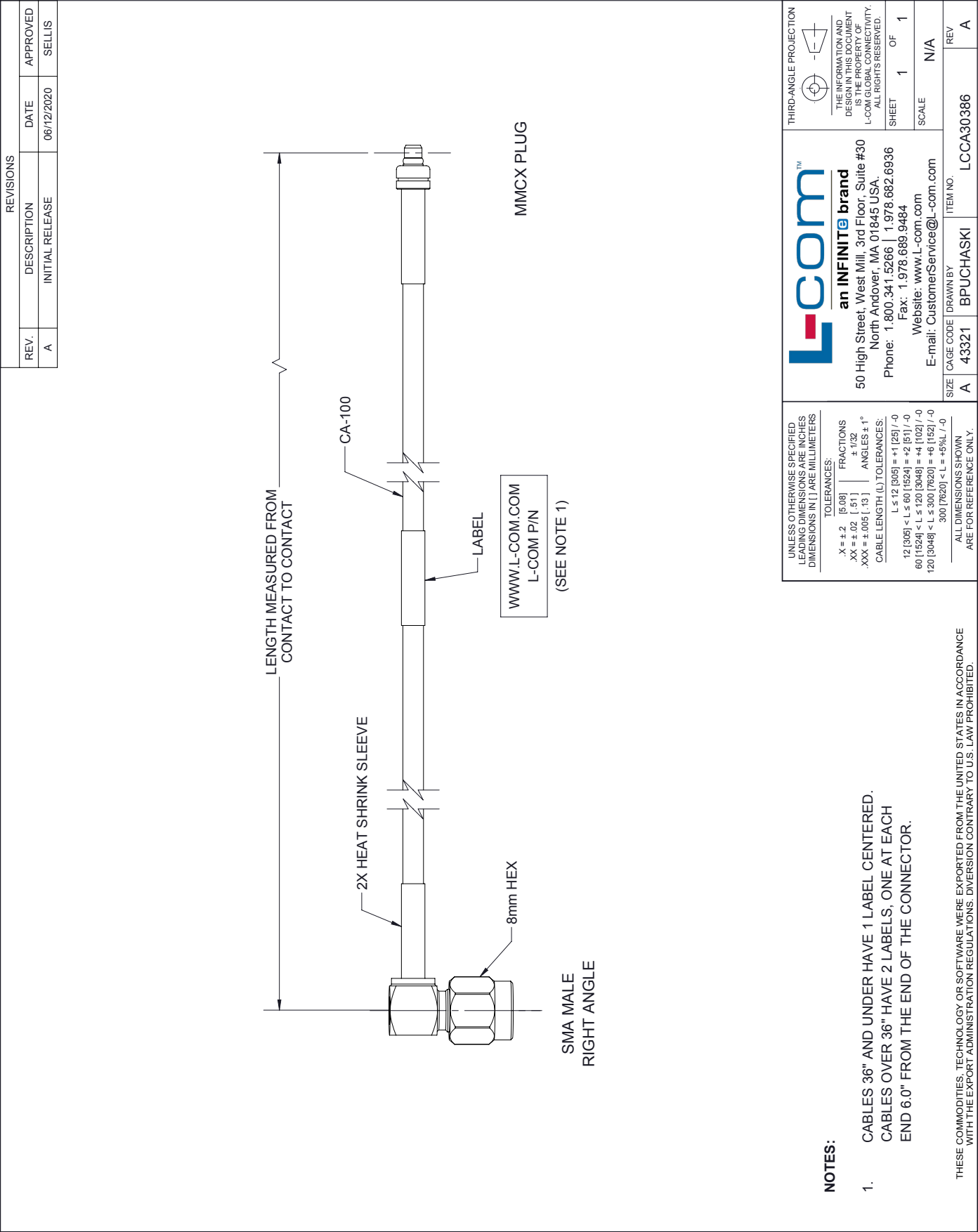
Example: LCCA30386-12 = 12 inches long cable  
LCCA30386-100cm = 100 cm long cable

Low Loss MMCX Plug to SMA Male Right Angle Cable Assembly using 100 Series Coax, 3 FT from L-com has same day shipment for domestic and International orders. L-com is a leading manufacturer of wired and wireless connectivity products and committed to in-stock availability and same day shipping. Our portfolio includes coaxial cable assemblies, connectors, adapters and custom products as well as lightning and surge protectors, NEMA rated enclosures, and an RF product line which includes antennas, amplifiers, passive, and active components.

The information contained within this document is accurate to the best of our knowledge and representative of the part described herein. It may be necessary to make modifications to the part and/or the documentation of the part in order to implement improvements. L-com reserves the right to make such changes as required. Unless otherwise stated, all specifications are nominal. L-com does not make any representation or warranty regarding the suitability of the part described herein for any particular purpose, and L-com does not assume liability arising out of the use of any part or document contained within this document is accurate to the best of our knowledge and representative of the part described herein. It may be necessary to make modifications to the part and/or the documentation of the part in order to implement improvements. L-com reserves the right to make such changes as required. Unless otherwise stated, all specifications are nominal. L-com does not make any representation or warranty regarding the suitability of the part described herein for any particular purpose, and L-com does not assume liability arising out of the use of any part or document.

Low Loss MMCX Plug to SMA Male Right Angle Cable Assembly using 100 Series Coax, 3 FT

L-com CAD Drawing



LENGTH MEASURED FROM  
CONTACT TO CONTACT

CA-100

2X HEAT SHRINK SLEEVE

8mm HEX

MMCX PLUG

WWW.L-COM.COM  
L-COM P/N  
(SEE NOTE 1)

SMA MALE  
RIGHT ANGLE

NOTES:  
1. CABLES 36" AND UNDER HAVE 1 LABEL CENTERED.  
CABLES OVER 36" HAVE 2 LABELS, ONE AT EACH  
END 6.0" FROM THE END OF THE CONNECTOR.

THESE COMMODITIES, TECHNOLOGY OR SOFTWARE WERE EXPORTED FROM THE UNITED STATES IN ACCORDANCE  
WITH THE EXPORT ADMINISTRATION REGULATIONS. DIVERSION CONTRARY TO U.S. LAW PROHIBITED.