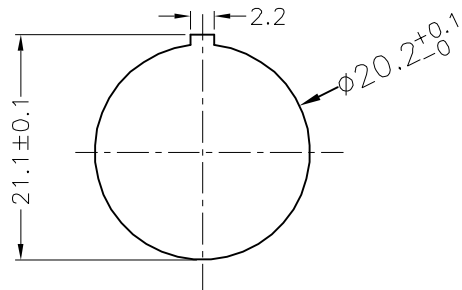


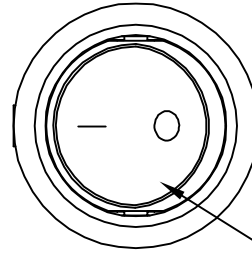
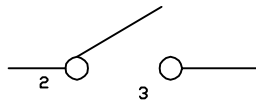
NOTES:

- 1.Circuit:ON/OFF
- 2.Operation force:500±200gf
- 3.Electrical rating:15A 125VAC
8A 250VAC
12(6)A 250V~
- 4.Contact resistance:<30mΩ
- 5.Insulation resistance:>1000MΩ(500VDC
between open contacts)
- 6.Dielectric strength:>1500V 1 minute
- 7.Color: cover is black, body is black.

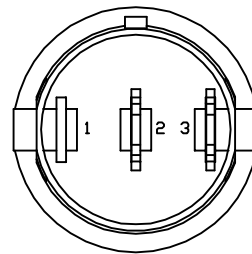
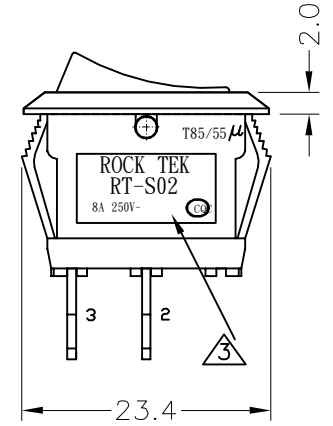
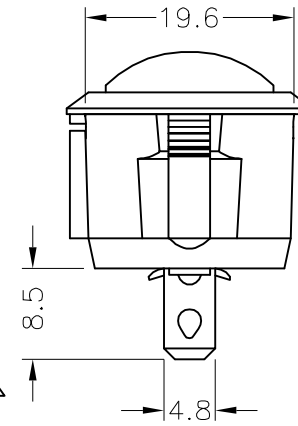
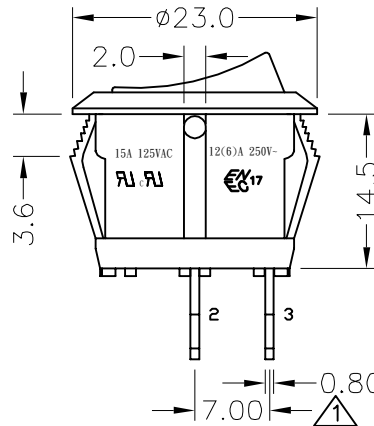
Panel cut out(Thickness: 3mm Max)



Circuit of Switch



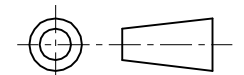
雾面黑色上盖



NO	DESCRIPTION	NO	DESCRIPTION	DIMENSIONAL TOLERANCES	APPROVED	CHECKED	DESIGN	DRAWN	ALL SIZE ARE IN	MM	DRAWING NO.	REV
5	→	10	→	RANGE					SCALE	FIT		
4	→	9	→	TOLERANCE					MAT'L	***		
3	取消VDE	8	→	X	±0.4				MATERIAL NO.		RT-S02-117-R4NBB	WIF108017
2	公差變更	7	→	X.X	±0.3							
1	公差變更	6	→	X.XX	±0.2							
				ANGLES	±0.5°							

ROCK TEK ELECTRICAL(SHENZHEN) CO.,LTD.

SIMON
2008.07.01



A