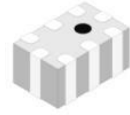


Low Pass Filter

HT-LFCG-2850+



Features

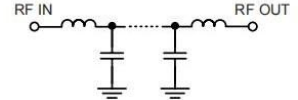
- Excellent power handling
- small size
- Low loss
- temperature stable
- LTCC construction , and has good moisture resistance, corrosion resistance, high reliability.

Applications

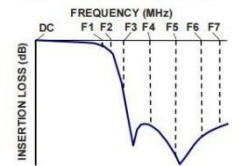
- Harmonic Rejection
- VHF/UHF transmitters / receivers
- Base Station/Micro base station of Mobile Communication, Internet of things terminal, lab use.

50Ω DC to 2850 MHz

Functional Schematic



Typical Frequency Response



Electrical Specifications at 25°C						
Parameter		Frequency(MHz)	Min.	Typ.	Max.	Unit
Pass Band	Insertion Loss	DC-2850	-	1.2	1.8	dB
	Freq.Cut-Off	3090	-	3.0	-	dB
	Return Loss	DC-2850	-	11.5	-	dB
Stop Band	Rejection Loss	3800-4400	20	-	-	dB
		4400-8000	-	35	-	dB
		8000-12000	-	30	-	dB
		12000-14000	-	20	-	dB

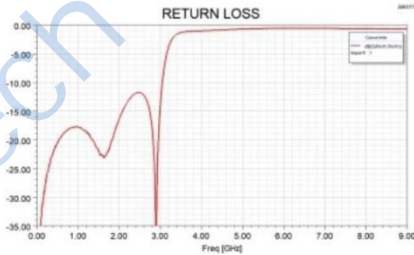
Pad Connections

INPUT	8
OUTPUT	4
GROUND	1,2,3,5,6,7

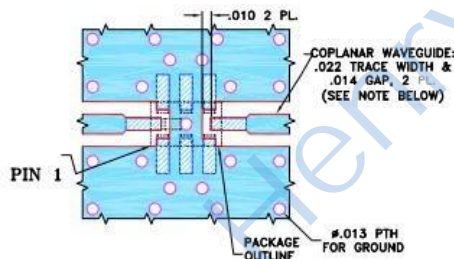
Maximum Ratings

Operating Temperature	-55°C to 125°C
Storage Temperature	-55°C to 125°C
RF Power Input*	5.5 W max.@25°C

*Passband rating, derate linearly to 1W at 125°C ambient
Permanent damage may occur if any of these limits are exceeded.

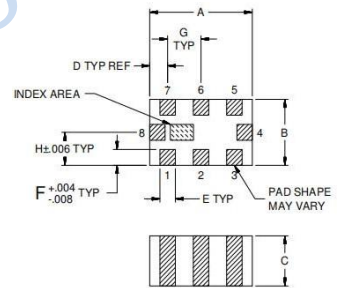


Demo Board P/N: CG-2012 Suggested PCB Layout



NOTES:

1. COPLANAR WAVEGUIDE IS SHOWN FOR ROGERS R04350B WITH DIELECTRIC THICKNESS .010" ± .001", COPPER: 1/2 OZ, EACH SIDE. FOR OTHER MATERIALS TRACE WIDTH AND GAP MAY NEED TO BE MODIFIED.
 2. BOTTOM SIDE OF THE PCB IS CONTINUOUS GROUND PLANE.
-



Outline Dimensions: Unit (mm)

A	2.00	E	0.30
B	1.25	F	0.30
C	0.95	G	0.65
D	0.35	wt	0.008g