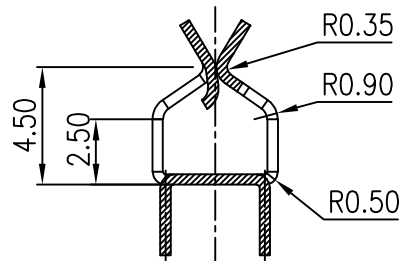
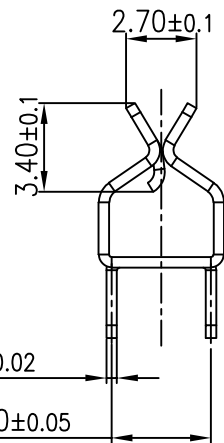
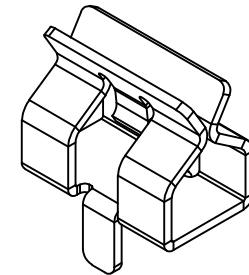
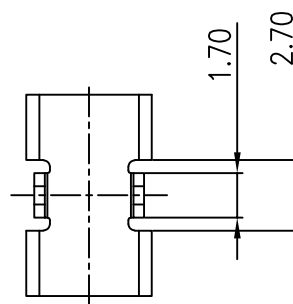
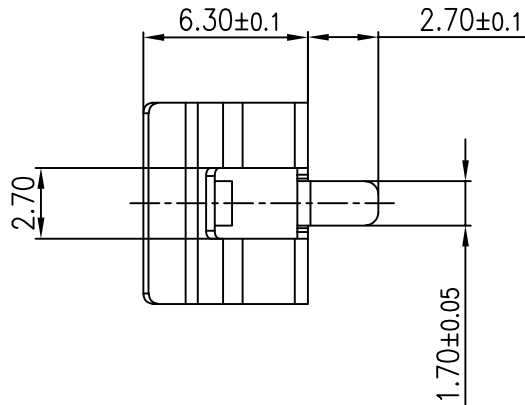
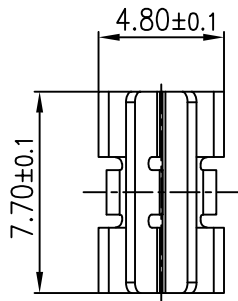




REV.	ECN NO.	REVISED	DATE

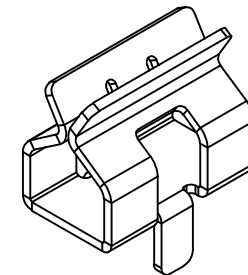


A-A SECTION



技术要求:

- 1、截断面毛刺高度 $\leq 0.03\text{mm}$ ;
- 2、部件要求平整,无变形、裂纹、损伤等外观缺陷;
- 3、电镀后产品盐雾测试达48小时;

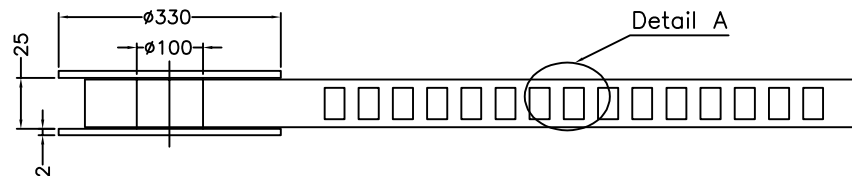
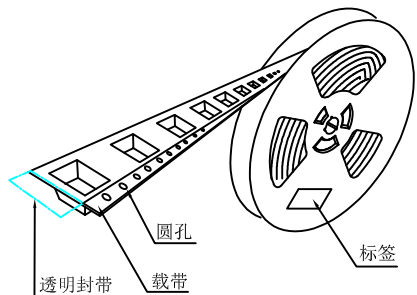


1	CONTACT SPRING	1	QBeCu T=0.4MM	Ni-Plating
NO.	PART NAME	Q'TY	MATERIAL	PLATING & COLOR

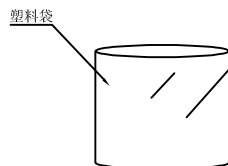
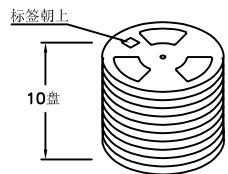
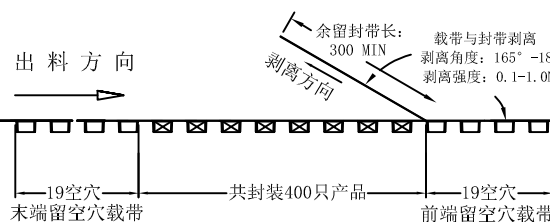
UNLESS OTHERWISE SPECIFIED TOLERANCES		<b>MYOUNG 美阳</b> <a href="http://www.meiyangdz.com">www.meiyangdz.com</a>			
DECIMALS: X :±0.30 X.X :±0.25 X.XX :±0.20 X.XXX :±0.10	ANGLES: X :±1° X.X :±0.5°	DSND	WangHeng	DATE	2023-11-14
		CHKD	ZhouRuicai	DATE	2023-11-14
		APVD	XueShunyong	DATE	2023-11-14
WEIGHT:		SCALE:	SIZE: A4	VIEW:	⊙ ⊚
SHEET 1 OF 2		UNIT: mm	REV.: A/0	OBJECT: MY	TITLE: 接触夹子ER14250 卷装
				PART NO.:	MY-14250-01-R
				DRAW NO.:	MY-CP-0324



产品

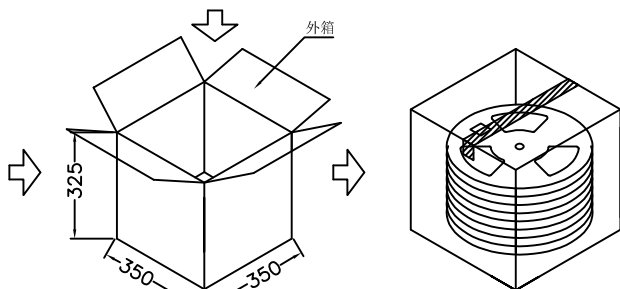


Detail A

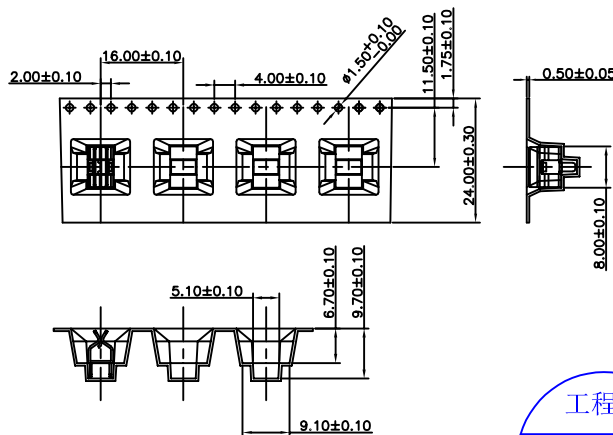
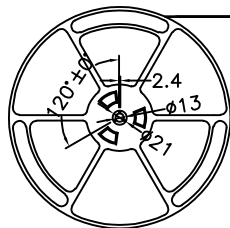


标签朝上  
10盘

塑料袋



外箱



技术要求:

1. 圆孔十个孔距离累计允许公差为±0.2mm
2. 带长250mm内容许弯曲度1mm
3. 材料厚度以在载带边缘测量为准
4. 所有尺寸定义依循EIA-481-C系准则定义之
5. 材料:透明PS T=0.50mm
6. 所有卷轮为灰蓝挖空旋转塑胶卷轮
7. 整模成型长度:7.008M,
8. 非指明公差范围为: ±0.1mm;超过250mm不计算累计误差
9. 型腔外形凡未标明处倒角R为0.2-0.3; 拔模斜度未标注的为3° 以下

包装信息:

- 1、每卷盘装产品 400 只, 卷盘外侧贴相关标签;
- 2、每10卷盘放在一个塑料袋中;
- 3、每外箱装10盘, 产品总数: 4000只;
- 4、外箱上下用胶纸封成“工”字;
- 5、接触夹子包材ER14250 卷装 (MY-14250-01-R)

UNLESS OTHERWISE SPECIFIED TOLERANCES		<b>MYOUNG 美阳</b> www.meiyangdz.com	
DECIMALS: X : ±*** X.X : ±*** X.XX : ±*** X.XXX : ±***	ANGLES: X : ±*** X.X : ±***	DSND WangHeng	DATE 2023-11-14
		CHKD ZhouRuicai	DATE 2023-11-14
		APVD XueShun Yong	DATE 2023-11-14
WEIGHT:		SCALE: 1:1	VIEW:
SHEET 2 OF 2		UNIT: mm	REV.: A/0
		SIZE: A4	OBJECT: MY
			TITLE: 接触夹子ER14250 卷装
			PART NO.: MY-14250-01-R
			DRAW NO.:MY-BD-0067