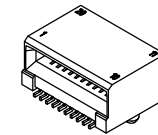


161C200
SFP+ CAGE



M42F-08P-020-P002G
SFP+ CONNECTOR

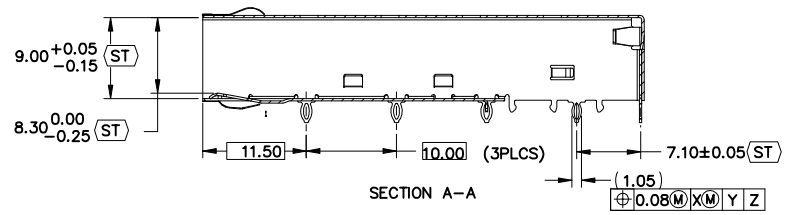
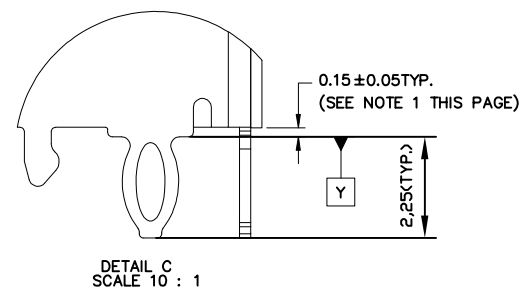
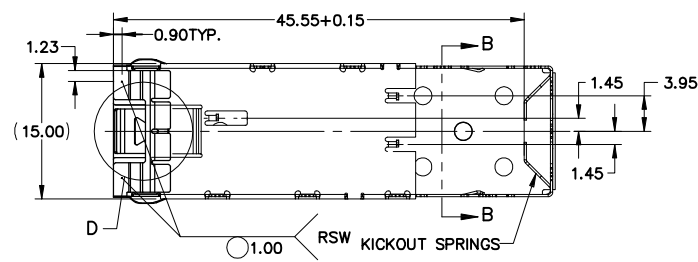
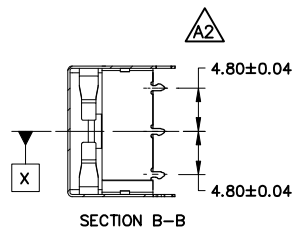
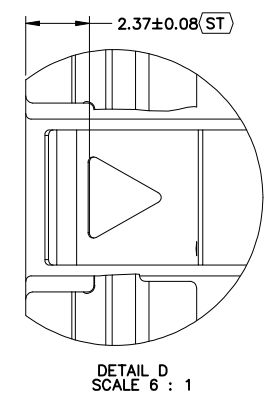
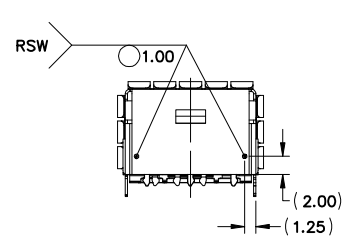
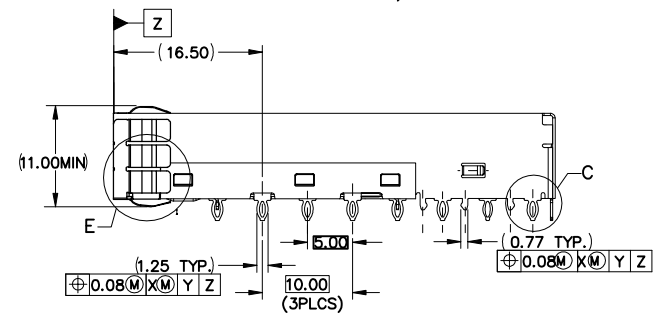
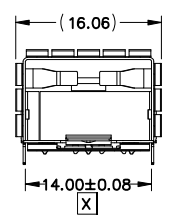
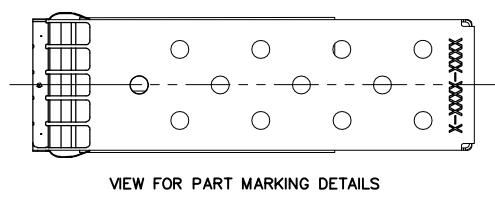
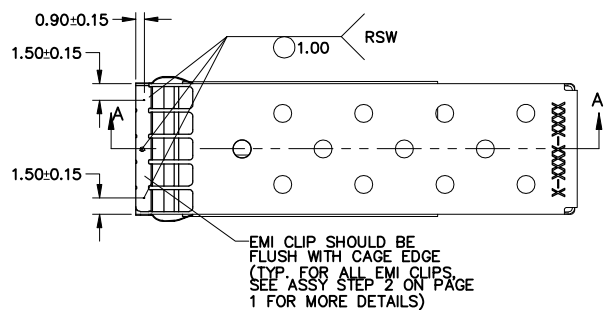
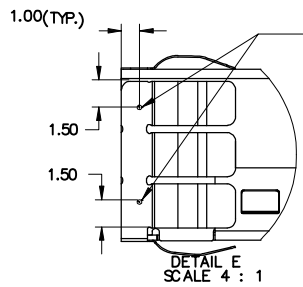
ASSEMBLY STEPS:

- STEP 1. ASSEMBLE TWO PIECES OF CAGE WITH A FIXTURE TO MAKE SURE THOSE KEY DIMENSIONS ARE CORRECT (SEE PAGE 2).
- STEP 2. SPOT WELDING PER DRAWING LOCATIONS (SEE PAGE 2).
- STEP 3. CLEAN UP OR SAND TO BLEND THE WELDING SPOTS WITH THE REST OF THE SURFACES BEFORE PLATING.
- STEP 4. MARK PART NUMBER (11 DIGITS) AND DATE CODE (4 DIGITS) ON THE CAGE AS SHOWN USING BLACK INK AFTER PLATING.

NOTES:

1. MATERIAL: PHOSPHOR BRONZE C51900(5191 PER JIS), (SEE COMPONENTS FOR DETAILS)
PLATING FINISH : 2.54 μ m Min. NICKEL OVER COPPER FLASH. RACK PLATING MAY BE REQUIRED.
2. ALL DIMENSIONS ARE AFTER PLATING AND TO BE FREE OF GREASE, LUBRICANTS, BURNS AND OTHER SURFACE CONTAMINANTS.
3. DIMENSION MARKED WITH "ST" SHALL BE MONITORED AND CONTROLLED. THE VENDOR MUST PROVIDE THE METHOD OF CONTROL AND THEIR MEASUREMENT DATA WITH EACH SHIPMENT.
4. A MINIMUM OF 90 N (20 LBS) PULL FORCE WILL BE APPLIED TO THE CAGE (HOLDING BOTTOM CAGE, PULL TOP ONE) THAT ANY OF THE WELDING JOINT SHALL NOT BE BROKEN OFF.
5. THE VENDOR SHALL PROVIDE THE TRAY WITH LID PACKAGE FOR THE CAGE PRIOR TO ACC APPROVAL. TRAY/LID MATERIAL: P.E.T. ANTI-STATIC POLYSTER, TRANSPARENTOR EQUIVALENT. 50 CAGES PER TRAY.

				TOLERANCE		UMax conn 东莞市友贸实业有限公司 DONGGUAN UMAXCONN ENTERPRISE LIMITED			TITLE: 1X1 SFP+ CAGE ASSY WITH SPECIAL SIDE & TOP SPRING FINGER EMI CLIP AND DOUBLE BEND LATCH BOTTOM CAGE				
				LINEAR	ANGLES				PART NO. 161C200				
				X \pm 0.40	X $^{\circ}$ \pm	APPD:	Jason	MAT'L:	DWG NO. 161C200M07001				
A2	----	Terry	Oct,30,2023	.X \pm 0.30	.X $^{\circ}$ \pm	CHKD:	Schumi	FINISH:	UNITS	SCALE	SHEET	REV	
A1	----	Terry	Jun,10,2022	.XX \pm 0.20	.XX $^{\circ}$ \pm	DRWN:	Terry	Q'TY:	MM	2 : 1	1 OF 3	A2	
REV	ECN NO.	NAME	DATE	.XXX \pm 0.10	.XXX $^{\circ}$ \pm								



NOTE:
1.THIS DIM (GAP) WILL BE MEASURED AS FOLLOWS: PUT THE CAGE ON THE FOOTPRINT GAGE, USE FEELER GAGE TO MEASURE THE GAP PER SPEC (0.15 mm MIN.).

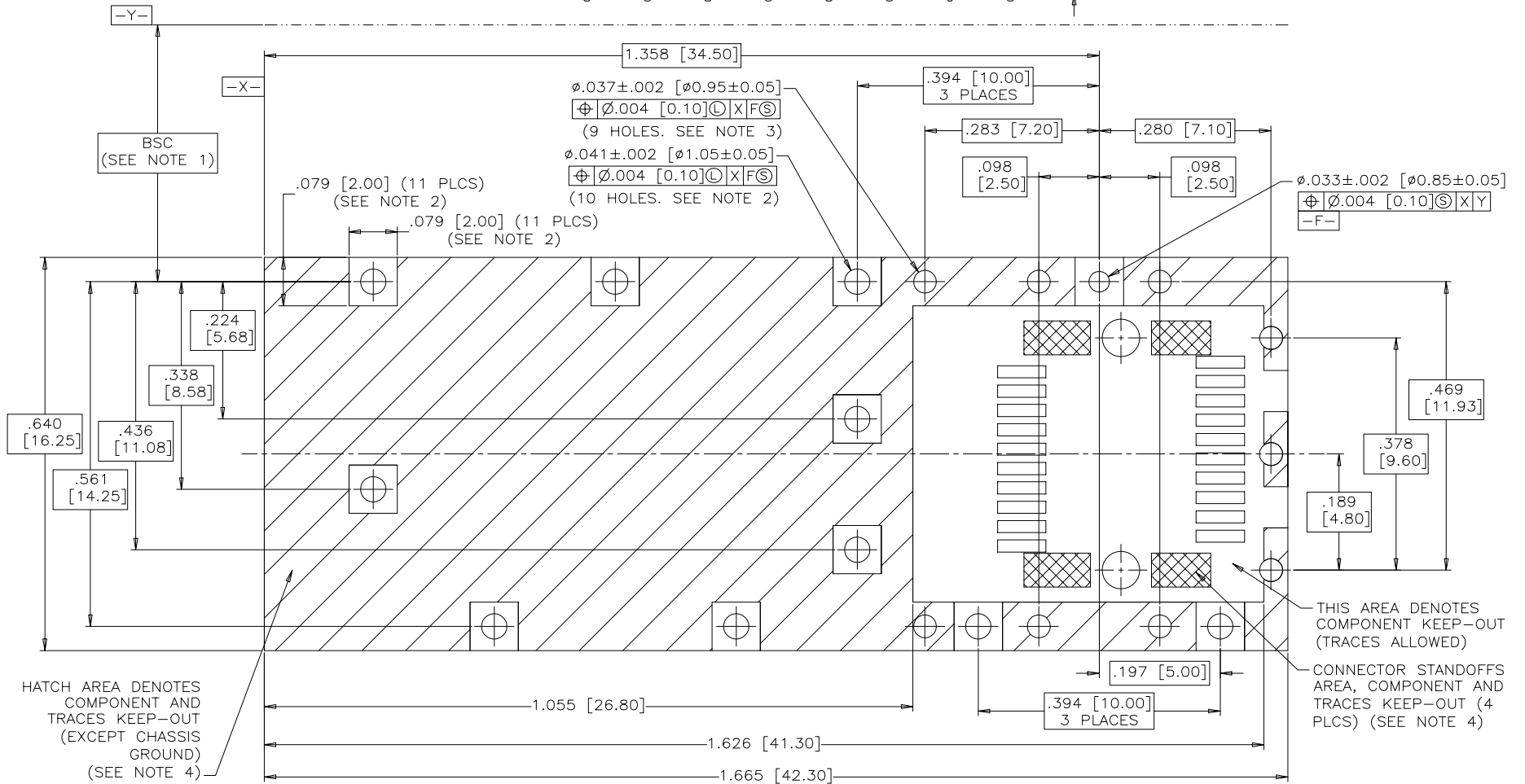
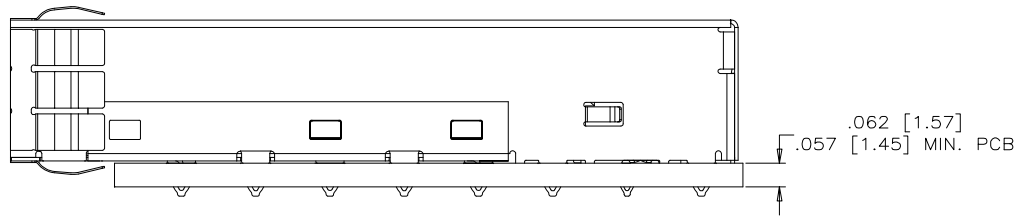
REV	ECN NO.	NAME	DATE
	See Sheet 1		

TOLERANCE	
LINEAR	ANGLES
X±0.40	X°±
.X±0.30	.X°±
.XX±0.20	.XX°±
.XXX±0.10	.XXX°±

UMax conn 东莞市友贸实业有限公司 DONGGUAN UMAXCONN ENTERPRISE LIMITED	
APPD: Jason	MAT'L:
CHKD: Schumi	FINISH:
DRWN: Terry	Q'TY:

TITLE:	1X1 SFP+ CAGE ASSY WITH SPECIAL SIDE & TOP SPRING FINGER EMI CLIP AND DOUBLE BEND LATCH BOTTOM CAGE			
PART NO.	161C200			
DWG NO.	161C200M07001			
UNITS	SCALE	SHEET	REV	
	MM	2 : 1	2 OF 3	A2

- NOTES:
 1. DATUM AND BASIC DIMENSIONS ESTABLISHED BY CUSTOMER
 2. PADS AND VIAS ARE CHASSIS GROUND, 11 PLACES.
 3. THRU HOLES, PLATING OPTIONAL.
 4. SEE DRAWINGS **M42F-08P-020-P002G** FOR CONNECTOR PCB LAYOUT.



RECOMMENDED SFP HOST BOARD LAYOUT
 (ONE SIDE CAGE MOUNTING)
 (SCALE 4:1)

THIS DOCUMENT CONTAINS PROPRIETARY INFORMATION AND SUCH INFORMATION MAY NOT BE DISCLOSED TO OTHERS FOR ANY PURPOSE OR USED FOR MANUFACTURING PURPOSES WITHOUT WRITTEN PERMISSION FROM AMPHENOL CANADA CORP.

TOLERANCE		UMax conn 东莞市友贸实业有限公司 DONGGUAN UMAXCONN ENTERPRISE LIMITED	TITLE:	
LINEAR	ANGLES		1X1 SFP+ CAGE ASSY WITH SPECIAL SIDE & TOP SPRING FINGER EMI CLIP AND DOUBLE BEND LATCH BOTTOM CAGE	
X.±0.40	X'±	APPD: Jason	MAT'L:	PART NO. 161C200
.X±0.30	.X'±			DWG NO. 161C200M07001
.XX±0.20	.XX'±	CHKD: Schumi	FINISH:	UNITS MM
.XXX±0.10	.XXX'±	DRWN: Terry	Q'TY:	

See Sheet 1			
REV	ECN NO.	NAME	DATE

UNITS	SCALE	SHEET	REV
MM	2 : 1	3 OF 3	A2