

UMAX7412401
SFP+ CAGE

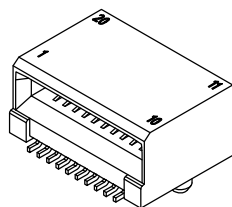
MATERIAL (RoHS COMPLIANCE):

CAGE:
COPPER ALLOY

PLATING OPTION:
100μ" [2.54 μm] MIN. NICKEL
PLATING (NOT FOR SOLDER PINS).

PACKAGING:
TRAY PACKAGING.

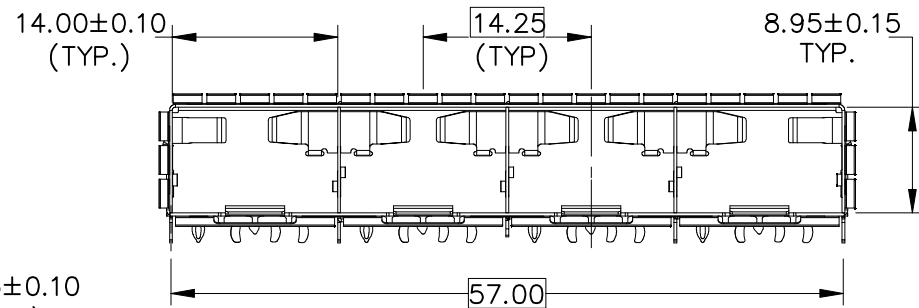
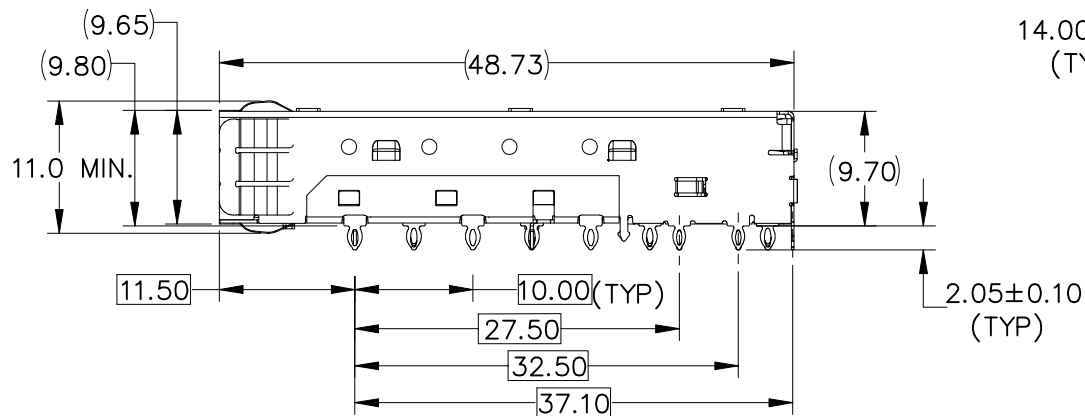
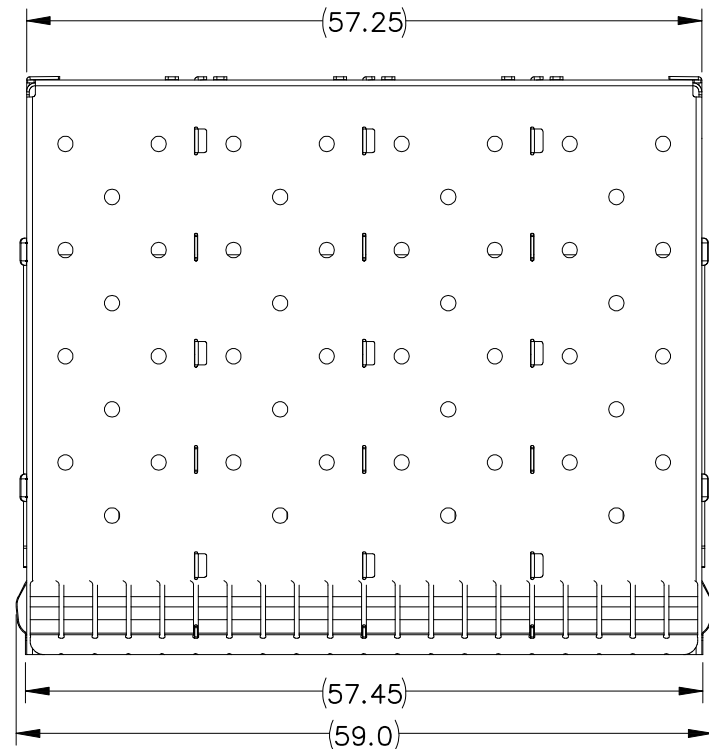
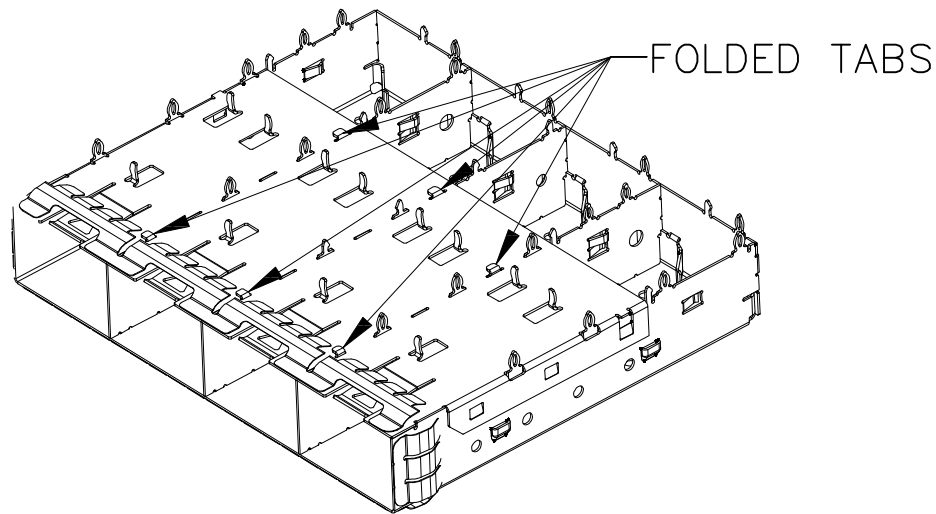
TEMPERATURE RANGE:
-40°C TO +85°C



M42F-08P-020-P002G
SFP+ CONNECTOR

TOLERANCE		UMax conn 东莞市友贸实业有限公司 DONGGUAN UMAX ENTERPRISE LIMITED	TITLE: SFP+ CAGE 1x4 NICKEL PLATING Through Hole - Press-Fit					
LINEAR	ANGLES		PART NO. UMAX7412401					
X±0.40	X°± 3°	APPD: Jason	MAT'L:		DWG NO. C-UMAX7D00113			
.X±0.30	.X°±	CHKD: Schumi	FINISH:		UNITS	SCALE	SHEET	REV
.XX±0.20	.XX°±	DRWN: Lei Songping	Q'TY:		MM	1 : 1	1 OF 6	0
.XXX±0.10	.XXX°±							

REV	ECN NO.	NAME	DATE



REV	ECN NO.	NAME	DATE

TOLERANCE	
LINEAR	ANGLES
X±0.40	X°± 3°
.X±0.30	.X°±
.XX±0.20	.XX°±
.XXX±0.10	.XXX°±

UMax conn 东莞市友贸实业有限公司
DONGGUAN UMAX ENTERPRISE LIMITED

APPD: Jason MAT'L:
CHKD: Schumi FINISH:
DRWN: Lei Songping Q'TY:

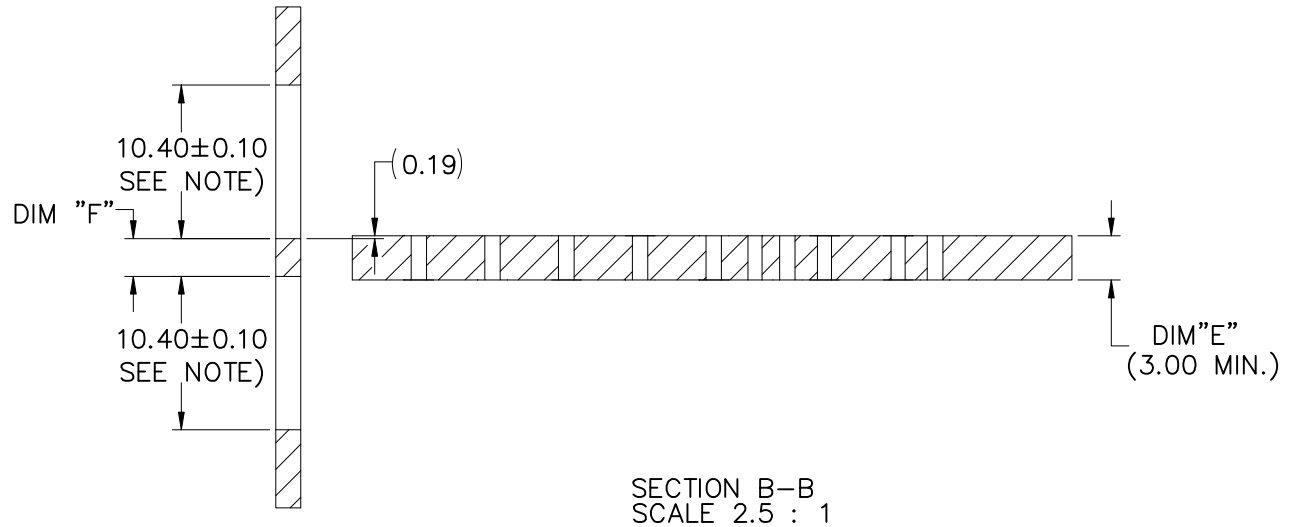
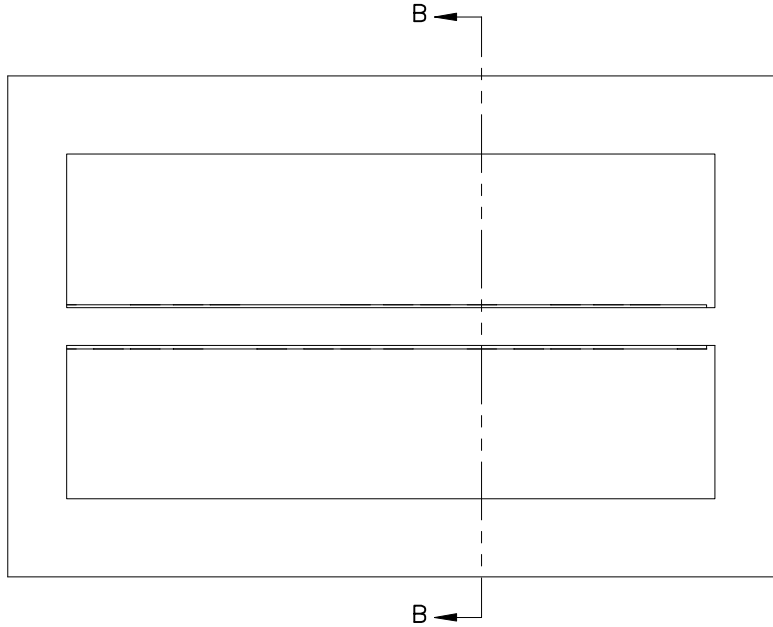
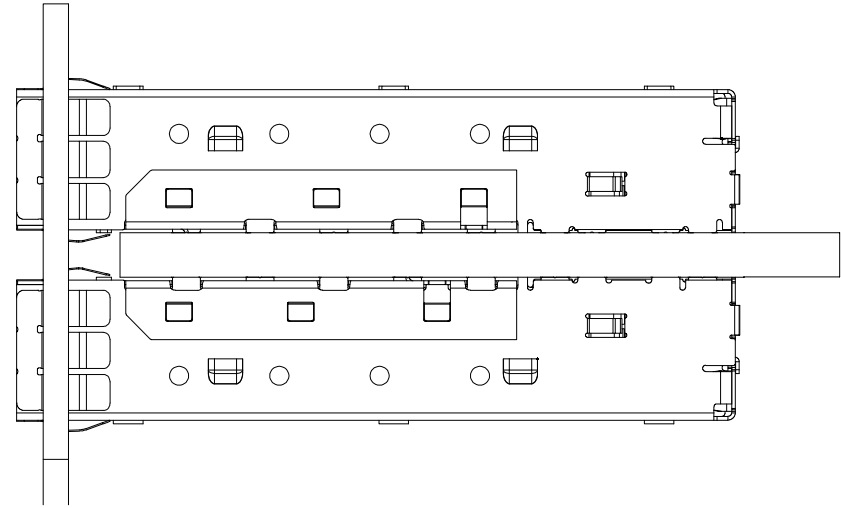
TITLE: SFP+ CAGE 1x4
NICKEL PLATING
Through Hole - Press-Fit

PART NO. UMAX7412401
DWG NO. C-UMAX7D00113

UNITS	SCALE	SHEET	REV
MM	1 : 1	2 OF 6	0

NOTE:

PANEL CUTOUT SIZES PER SFF 8433 SPEC. FOR BELLY TO BELLY MOUNTING, DIM "E" (PCB THICKNESS) IS 3.0 mm MIN. DIM "F" RELATED TO DIM "E". FOR DIM "F" = DIM "E" - 0.44 mm. THE PANEL CUTOUT 10.40 mm MIGHT BE INCREASED UP TO 10.80 mm IN ORDER TO ACCOMODATE PCB TOLERANCE.



SECTION B-B
SCALE 2.5 : 1

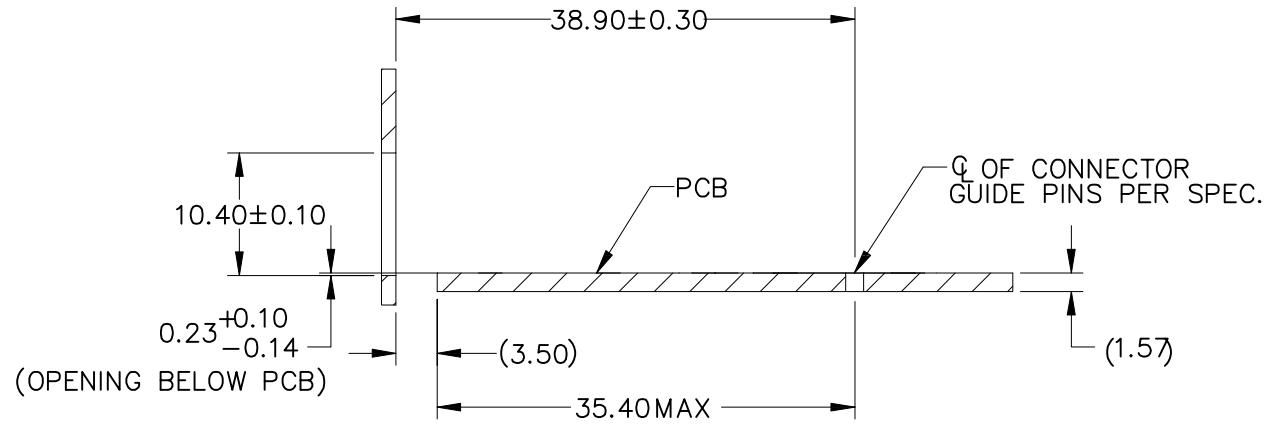
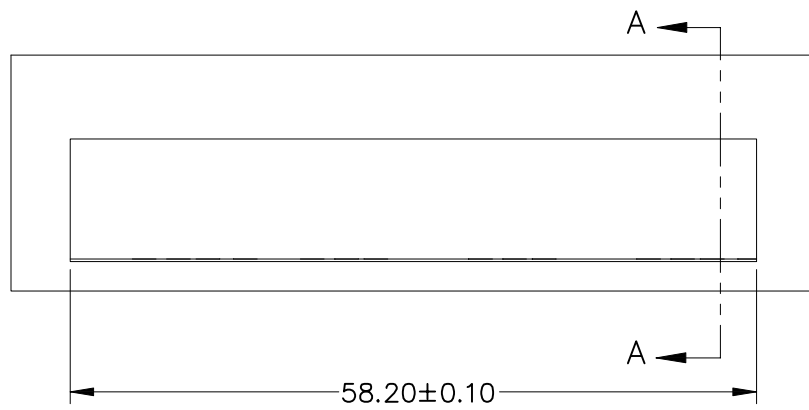
RECOMMENDED BEZEL DESIGN
(BELLY TO BELLY CAGE MOUNTING)

REV	ECN NO.	NAME	DATE

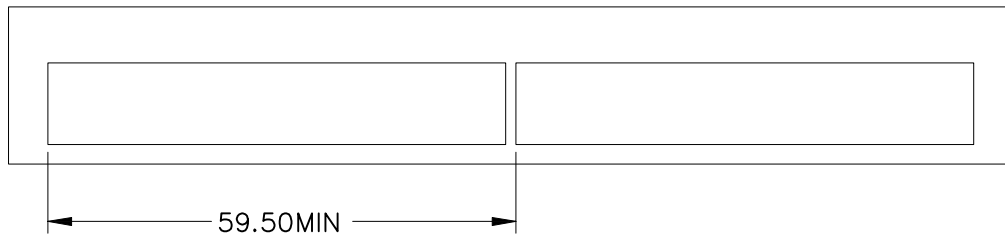
TOLERANCE	
LINEAR	ANGLES
X ± 0.40	X° ± 3°
.X ± 0.30	.X° ±
.XX ± 0.20	.XX° ±
.XXX ± 0.10	.XXX° ±

UMax conn 东莞市友贸实业有限公司 DONGGUAN UMAX ENTERPRISE LIMITED		APPD:	Jason	MAT'L:	
		CHKD:	Schumi	FINISH:	
DRWN:		Lei Songping	Q'TY:		

TITLE:		SFP+ CAGE 1x4 NICKEL PLATING Through Hole - Press-Fit			
PART NO.		UMAX7412401			
DWG NO.		C-UMAX7D00113			
	UNITS	SCALE	SHEET	REV	
	MM	1 : 1	3 OF 6	0	



SECTION A-A
SCALE 1.5 : 1



RECOMMENDED BEZEL DESIGN
(SINGLE SIDE CAGE MOUNTING)

REV	ECN NO.	NAME	DATE

TOLERANCE	
LINEAR	ANGLES
X±0.40	X°± 3°
.X±0.30	.X°±
.XX±0.20	.XX°±
.XXX±0.10	.XXX°±

UMax conn 东莞市友贸实业有限公司
DONGGUAN UMAX ENTERPRISE LIMITED

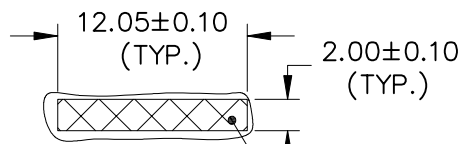
APPD: Jason MAT'L:
CHKD: Schumi FINISH:
DRWN: Lei Songping Q'TY:

TITLE: SFP+ CAGE 1x4
NICKEL PLATING
Through Hole - Press-Fit

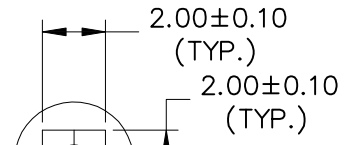
PART NO. UMAX7412401

DWG NO. C-UMAX7D00113

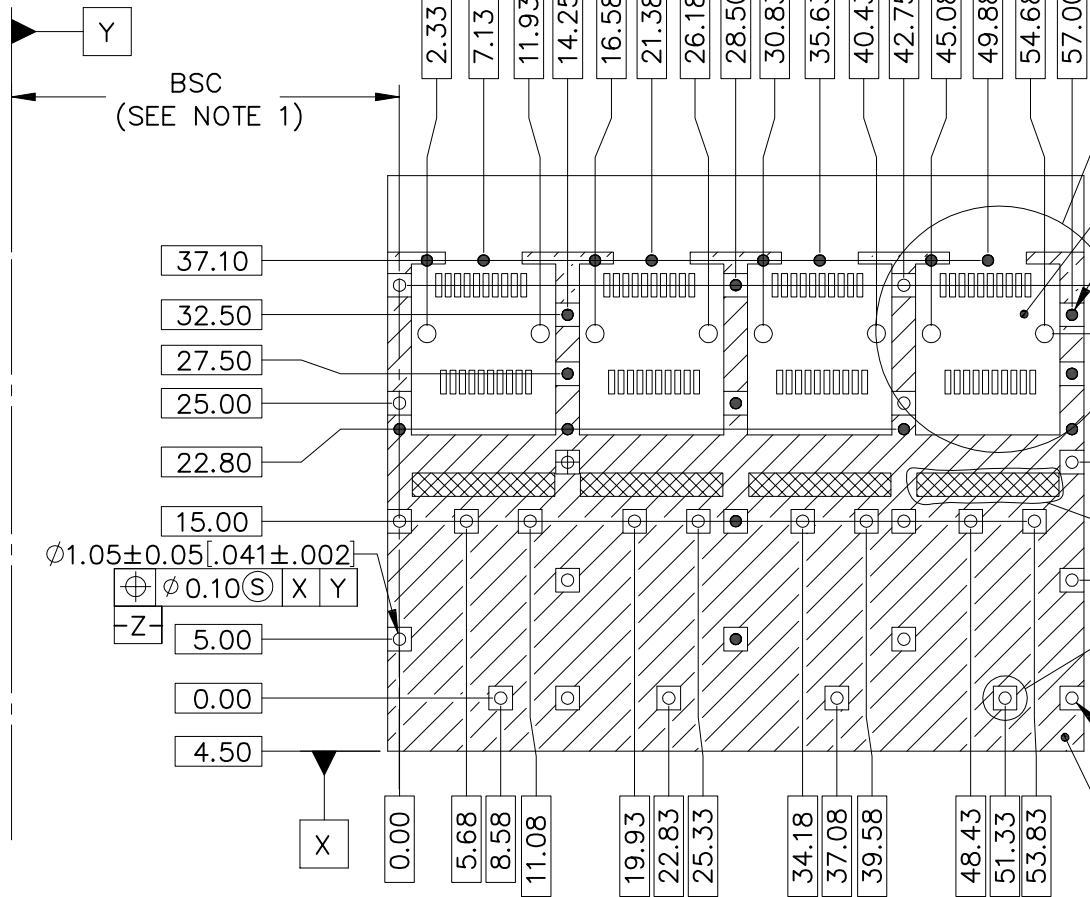
UNITS	SCALE	SHEET	REV
MM	1 : 1	4 OF 6	0



DETAIL E
SCALE 2 : 1
PATTERN REPEATS FOR EACH PORT
SPACING BETWEEN PORTS IS 14.25mm.
APPLIES TO ALL GANGED LAYOUTS



(Ø1.05)
DETAIL D
SCALE 4 : 1



THIS AREA DENOTES
COMPONENTS KEEP-OUT
(TRACES ALLOWED)

Ø0.95±0.05 [Ø0.37±.002] (20 PLCS)
Ø0.10 (M) X Z (S)

Ø1.55±0.05
Ø0.05 (L) Z (W)
- V -

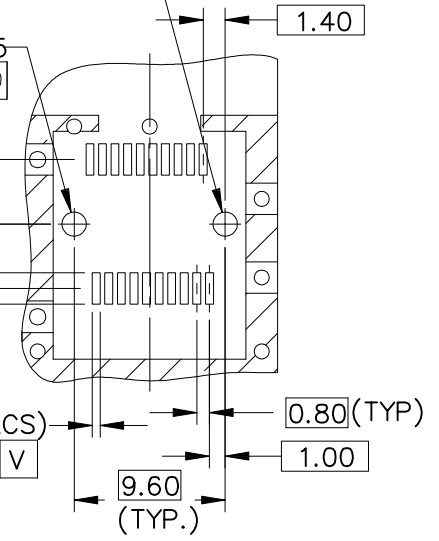
Ø1.55±0.05
Ø0.05 (L) X Z (S)
- W -

2.00±0.03 (20 PLCS)
Ø0.06 (L) W V

0.50±0.03 (20 PLCS)
Ø0.06 (L) W V

Ø1.05±0.05 [Ø0.41±.002] (25 PLCS)
Ø0.1 (M) X Z (S)

CROSS-HATCHED AREA DENOTES
COMPONENT AND TRACE KEEP-OUT
(EXCEPT CHASSIS GROUND)



DETAIL C
SCALE 2 : 1

RECOMMENDED PCB DESIGN
FOR SINGLE SIDE MOUNTING

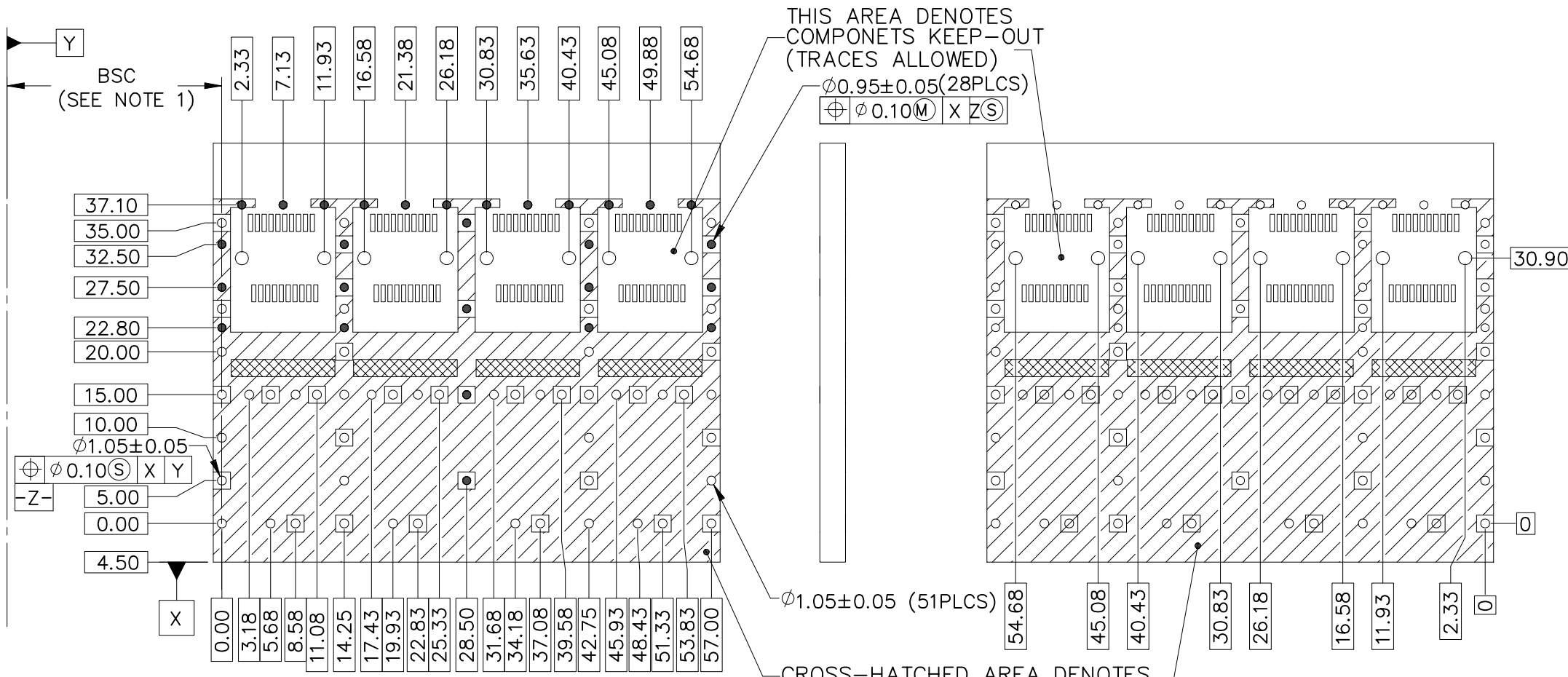
TOLERANCE	
LINEAR	ANGLES
X±0.40	X°± 3°
.X±0.30	.X°±
.XX±0.20	.XX°±
.XXX±0.10	.XXX°±

UMax conn 东莞市友贸实业有限公司
DONGGUAN UMAX ENTERPRISE LIMITED

APPD: Jason MAT'L:
CHKD: Schumi FINISH:
DRWN: Lei Songping Q'TY:


TITLE:	SFP+ CAGE 1x4 NICKEL PLATING Through Hole - Press-Fit			
PART NO.	UMAX7412401			
DWG NO.	C-UMAX7D00113			
	UNITS	SCALE	SHEET	REV
	MM	1 : 1	5 OF 6	0

REV	ECN NO.	NAME	DATE



NOTES:
 1. DATUM AND BASIC DIMENSIONS ESTABLISHED BY CUSTOMER.
 2. PADS AND VIAS ARE CHASSIS GROUND.
 3. THRU-HOLES, PLATING OPTIONAL.

RECOMMENDED PCB DESIGN
 FOR BELLY TO BELLY MOUNTING

		TOLERANCE		UMax conn 东莞市友贸实业有限公司 DONGGUAN UMAX ENTERPRISE LIMITED		TITLE: SFP+ CAGE 1x4 NICKEL PLATING Through Hole - Press-Fit					
		LINEAR	ANGLES			PART NO. UMAX7412401					
		X±0.40	X°± 3°	APPD: Jason	MAT'L:	DWG NO. C-UMAX7D00113		UNITS	SCALE	SHEET	REV
		.X±0.30	.X°±	CHKD: Schumi	FINISH:		MM	1 : 1	6 OF 6	0	
REV	ECN NO.	.XX±0.20	.XX°±	DRWN: Lei Songping	Q'TY:						
		.XXX±0.10	.XXX°±								