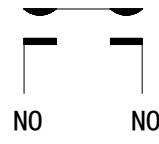
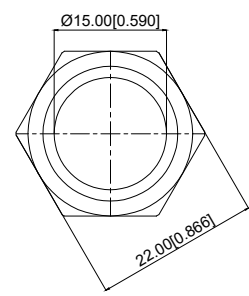
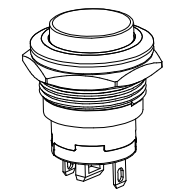
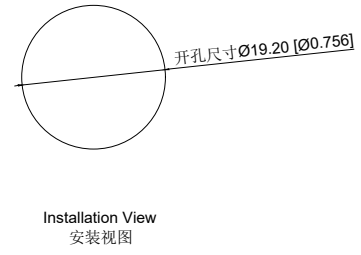


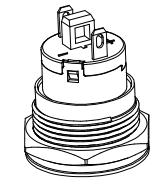
面板最大厚度5.00[0.196]



Schematic Diagram  
电气原理图



Installation View  
安装视图



A4				
A3				
A2				
A1				
REV	DATE	REVISION	DESCRIPTION	ISSUE



COMMON TOLERANCE	
X.XX	± 0.10
X.X	± 0.15
X	± 0.25
ANGULAR	—

UNIT	MM	PROJECTED	
DRAWN BY	FUYUAN	CHECKED BY	COCO
DATE	2019	APPROVAL	B ALEN

PRODUCT NAME:  
MODEL NO: TP91928G1A  
Https: www.rocpu.tw

# ROCPCU TECHNOLOGY CO., LTD

Copies are issued in strict confidence and shall not be reproduced or copied, or used as the basic of manufacture or sale of apparatus without permission


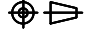
性能参数

1. Heating current: Ui: AC250V, Ith: 5A  
发热电流: Ui: AC250V, Ith: 5A
2. Rated current: 3A/DC36V  
额定电流: 3A/DC36V
3. Power-frequency withstand voltage: 1500V1min  
工频耐压: 1500V1min
4. Insulation resistance:  $\geq 1000M\Omega$   
绝缘电阻:  $\geq 1000M\Omega$
5. Contact resistance:  $\leq 50m\Omega$   
接触电阻:  $\leq 50m\Omega$
6. Pressing stroke:  $2.80mm \pm 0.10$   
按压行程:  $2.80mm \pm 0.10$
7. Contact stroke:  $1.00mm \pm 0.10$   
接触行程:  $1.00mm \pm 0.10$
8. Nut assembly torque: 5-14N  
螺帽装配力矩: 5-14N
9. Protection level: IP67  
防护等级: IP67
10. Explosion prevention level: IK09  
防暴等级: IK09
11. Working environment temperature:  $-20^{\circ}C \sim +55^{\circ}C$   
工作环境温度:  $-20^{\circ}C \sim +55^{\circ}C$
12. Compression torque:  $\leq 4N$   
按压扭力:  $\leq 4N$

连接形式


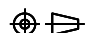
1. Welding temperature of wire:  $320 \pm 20^{\circ}C$   
线材焊接温度:  $320 \pm 20^{\circ}C$   
Wire welding duration: less than 3 seconds  
线材焊接时长: 时长3秒以下
2. Can be used with dedicated connectors:  
可配专用接插件使用:
- 2.1 Switch function wire: blue wire (NO)  
开关功能线材: 蓝线 (NO)

13. Electrical life: 500000 cycles  
电气寿命: 500000 cycles
14. mechanical: 500000cycles  
机械寿命: 500000cycles
15. Operation method: Self-locking  
操作方式: 自锁式
16. NO reverse thrust foot torque:  $\leq 30N$   
NO反推脚扭力:  $\leq 30N$

A4				 <b>ROCPCU</b>	COMMON TOLERANCE		UNIT	MM	PROJECTED		PRODUCT NAME:
A3					X.XX	$\pm 0.10$	DRAWN BY	FUYUAN	CHECKED BY	COCO	MODEL NO: TP91928G1A
A2					X.X	$\pm 0.15$	DATE	2019	APPROVAL B	ALEN	Https: www.rocpcu.tw
A1					X	$\pm 0.25$	ROCPCU TECHNOLOGY CO., LTD				
REV	DATE	REVISION	DESCRIPTION		ISSUE	ANGULAR					

NO 序号	Part name 部件名	Material 材料	QTY 数量	Remark 备注
1	Key 按键	Aluminum alloy 铝合金	1	Oxidized/Black 氧化/黑色
2	Housing 外壳	Aluminum alloy 铝合金	1	Oxidized/Black 氧化/黑色
3	Oring O型圈	Silica gel 硅胶	1	
4	Arm nut 固定螺帽	Brass 黄铜	1	nickeling 镀镍
5	Base 基座	PA66	1	
6	Contact material 接触材质	silver alloy 银合金	1	Silvering 镀银
7	Pin 引脚	Brass 黄铜	1	Silvering 镀银

### 材质参数

A4				 <b>ROCPCU</b>	COMMON TOLERANCE		UNIT	MM	PROJECTED		PRODUCT NAME:
A3					X.XX	± 0.10	DRAWN BY	FUYUAN	CHECKED BY	COCO	MODEL NO: TP91928G1A
A2					X.X	± 0.15	DATE	2019	APPROVAL B	ALEN	Https: www.rocpcu.tw
A1					X	± 0.25	<h1>ROCPCU TECHNOLOGY CO.,LTD</h1>				
REV	DATE	REVISION	DESCRIPTION		ISSUE	ANGULAR					