



# CorePro LED PLC 2P

## LED PLC 11W 840 2P G24D

CorePro LED PLC 2P integrates a LED light source into a traditional fluorescent form factor. This product is the ideal solution for uplampping in general lighting applications: it meets basic lighting requirements, offers significant energy savings, and is environmentally friendly.

### Product data

General information	
Cap-Base	G24D [ G24d]
EU RoHS compliant	Yes
Nominal Lifetime (Nom)	15000 h
Switching Cycle	50000
Light technical	
Color Code	840 [ CCT of 4000K]
Beam Angle (Nom)	240 °
Luminous Flux (Nom)	1400 lm
Color Designation	Cool White (CW)
Correlated Color Temperature (Nom)	4000 K
Luminous Efficacy (rated) (Nom)	127.00 lm/W
Color Consistency	<6
Color Rendering Index (Nom)	80
LLMF At End Of Nominal Lifetime (Nom)	70 %
Operating and electrical	
Input Frequency	50 to 60 Hz
Power (Nom)	11 W
Lamp Current (Max)	86 mA
Lamp Current (Min)	86 mA
Lamp Current (Nom)	86 mA

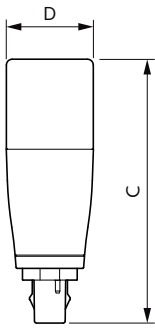
Starting Time (Nom)	0.5 s
Warm Up Time to 60% Light (Nom)	0.5 s
Power Factor (Nom)	0.5
Voltage (Nom)	220-240 V
Temperature	
T-Ambient (Max)	45 °C
T-Ambient (Min)	-20 °C
T-Storage (Range)	-40 °C to 65 °C
T-Storage (Max)	65 °C
T-Storage (Min)	-40 °C
T-Case Maximum (Nom)	67 °C
Controls and dimming	
Dimmable	No
Mechanical and housing	
Product Length	100 mm
Bulb Shape	PL-C
Approval and application	
Energy Saving Product	Yes

# CorePro LED PLC 2P

Approval Marks	RoHS compliance CE marking KEMA Keur certificate
Energy Consumption kWh/1000 h	- kWh
<b>Application conditions</b>	
Ambient temperature range	-20 °C to 45 °C
<b>Product data</b>	
Full product code	692234191551200

Order product name	LED PLC 11W 840 2P G24D
EAN/UPC - Product	6922341915512
Order code	929002440310
Numerator - Quantity Per Pack	1
Numerator - Packs per outer box	10
Material Nr. (12NC)	929002440310
Net Weight (Piece)	0.072 kg

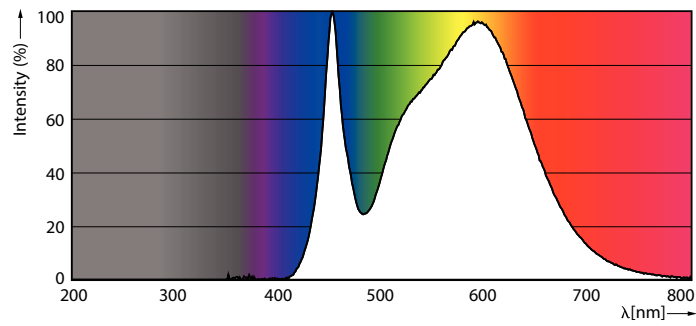
## Dimensional drawing



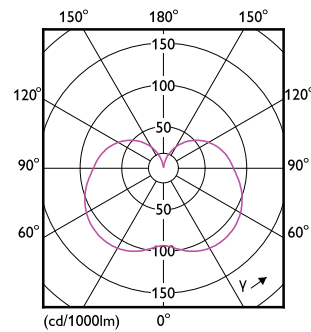
LED PLC 11W 840 2P G24D

Product	D1	D2	A1	A2	A3
LED PLC 11W 840 2P G24D	135 mm		113 mm	120 mm	135 mm

## Photometric data



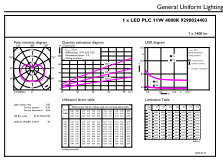
LEDtube PLC 11W G24D 1400lm 840



LEDtube PLC 11W G24D 1400lm

# CorePro LED PLC 2P

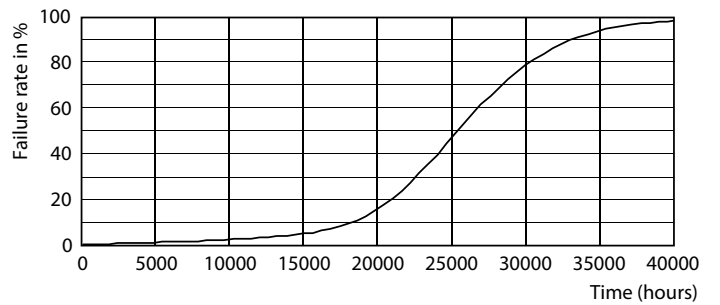
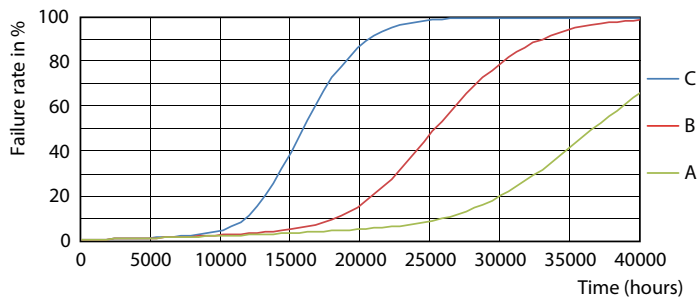
## Photometric data



© 2023 Philips Lighting B.V. Page 11 of 11

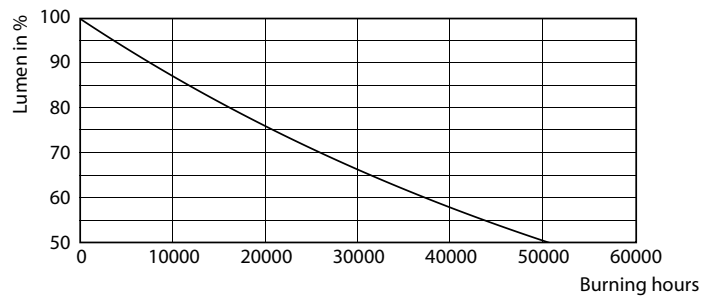
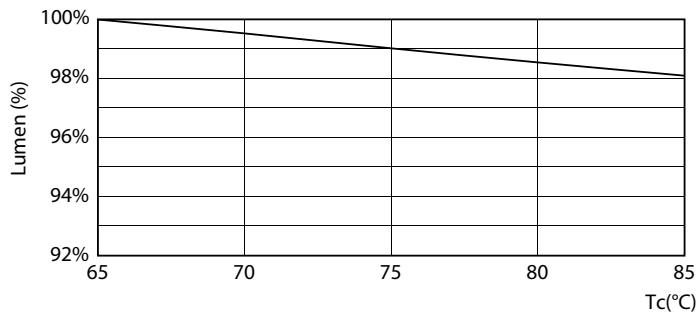
LEDtube PLC 11W G24D 1400lm 840

## Lifetime



LEDtube 25K FailureRate

LEDtube 25K

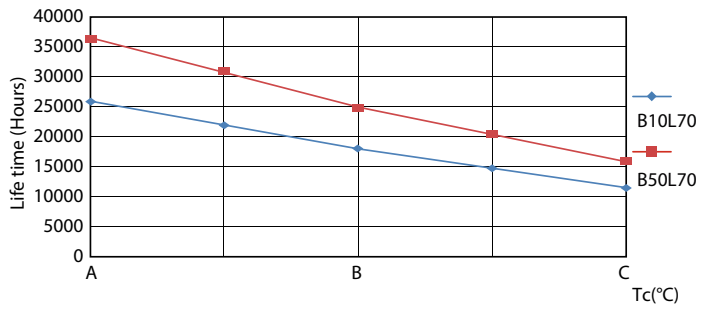


LEDtube PLC 11W 15K 2 LumenVsTc

LEDtube 25K

# CorePro LED PLC 2P

## Lifetime



LEDtube 25K LifetimeVsTc

