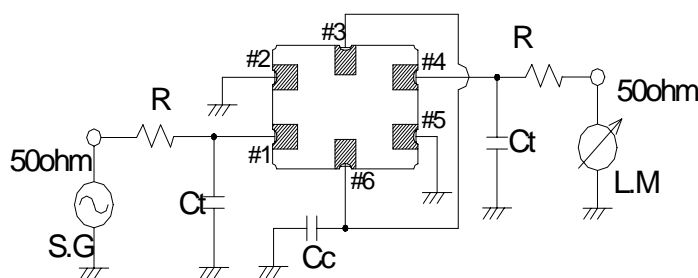


1.MODEL	D38810GQ2
2.PARTS NUMBER(USER)	
3.TYPE	DSF753SBF
4.ELECTRICAL PERFORMANCES	
4-1.Nominal Frequency	38.850 MHz
4-2.Passband Width	+/- 5.00 kHz MIN./ 3dB
4-3. Stopband Width	+/- 18.5 kHz MAX./ 35dB
4-4. Insertion Loss	4.0 dB MAX./ (MINIMUM LOSS)
4-5. Ripple	1.0 dB MAX.
4-6. Guaranteed Attenuation	70 dB MIN./(f0-90 kHz)
4-7.Spurious Response	40 dB MIN.
4-8.Terminal Impedance	610 ohm+/-10% 3.0 pF+/-0.5pF
4-9.Insulation Resistance	500 M ohm MIN. / DC 100V (Between Case and IN/OUT Terminal)
4-10.Operating Temperature Range	-30 to +70 deg.C

5.TEST CIRCUIT

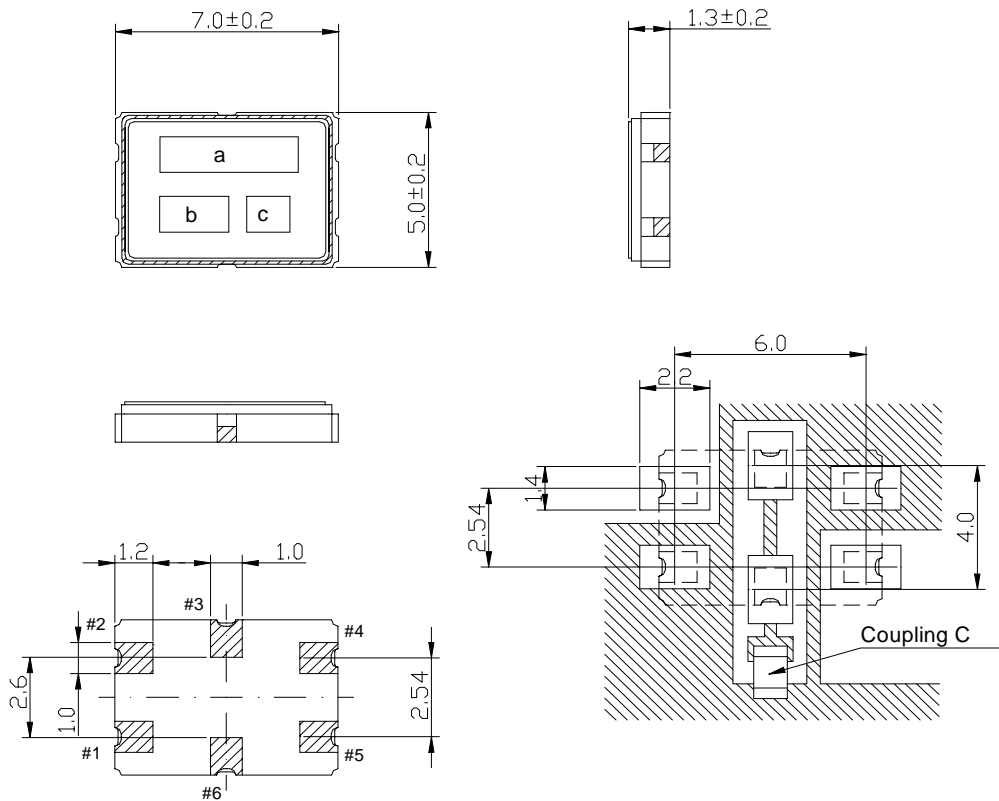
R=560ohm
 Ct=3.0pF(floating capacity included)
 Cc=12.5pF(floating capacity included)



DWG. No.

DATE 2003/12/10

6. Dimensions



PIN	Connection
#1	IN
#2	GND
#3	Connect With #6
#4	OUT
#5	GND
#6	Connect With #3

7. Marking

(a) Model 38810GQ2

(b) Maker KDS

(c) Manufactured Year Month(*1)

(*1)Year The last digit of the year of the Christian Era should be corresponded to the Arabic figures.

JAN.	FEB.	MAR.	APR.	MAY.	JUN.	JUL.	AUG.	SEP.	OCT.	NOV.	DEC.
A	B	C	D	E	F	G	H	J	K	L	M

DWG. No.

DATE

2003/12/10