

0.8W, 11V - 220V Zener Diode

FEATURES

- AEC-Q101 qualified
- Silicon zener diodes
- Low profile surface-mount package
- Zener and surge current specification
- Low leakage current
- Excellent stability
- Moisture sensitivity level: level 1, per J-STD-020
- RoHS Compliant
- Halogen-free according to IEC 61249-2-21

APPLICATIONS

- Voltage regulating
- Reference voltage
- Protection circuit

MECHANICAL DATA

- Case: Sub SMA
- Molding compound meets UL 94V-0 flammability rating
- Terminal: Matte tin plated leads, solderable per J-STD-002
- Meet JESD 201 class 2 whisker test
- Polarity: Indicated by cathode band
- Weight: 0.019g (approximately)

KEY PARAMETERS		
PARAMETER	VALUE	UNIT
V_Z	11 - 220	V
Test current I_{ZT}	4 - 50	mA
P_{tot}	0.8	W
T_{JMAX}	175	°C
Package	Sub SMA	
Configuration	Single die	



Sub SMA



ABSOLUTE MAXIMUM RATINGS ($T_A = 25^\circ\text{C}$ unless otherwise noted)			
PARAMETER	SYMBOL	VALUE	UNIT
Forward voltage @ $I_F = 0.2\text{A}$	V_F	1.2	V
Power dissipation	P_{tot}	$T_L = 80^\circ\text{C}$	2.3
		$T_A = 25^\circ\text{C}^{(1)}$	0.8
Non-repetitive peak pulse power dissipation 100 μs square pulse ⁽²⁾	P_{ZSM}	300	W
Junction temperature	T_J	- 55 to +175	°C
Storage temperature	T_{STG}	- 55 to +175	°C

Notes:

1. Mounted on Cu-Pad size 5mm x 5mm
2. $T_J = 25^\circ\text{C}$ prior to surge

THERMAL PERFORMANCE			
PARAMETER	SYMBOL	TYP	UNIT
Junction-to-lead thermal resistance	$R_{\theta JL}$	30	°C/W
Junction-to-ambient thermal resistance ⁽¹⁾	$R_{\theta JA}$	180	°C/W

Notes:

1. Mounted on Cu-Pad size 5mm x 5mm

ORDERING INFORMATION		
ORDERING CODE⁽¹⁾	PACKAGE	PACKING
BZD17CxPH	Sub SMA	10,000 / Tape & Reel

Notes:

1. "x" defines voltage from 11V(BZD17C11PH) to 220V(BZD17C220PH)

ELECTRICAL SPECIFICATIONS ($T_A = 25^\circ\text{C}$ unless otherwise noted)										
Part number	Marking code	Working Voltage		Differential Resistance		Temperature Coefficient		Test Current	Reverse Current@ Reverse Voltage	
		$V_Z @ I_{ZT}^{(1)}$		$r_{dif} @ I_Z$		$\alpha_Z @ I_Z$		I_{ZT}	I_R	V_R
		V		Ω		%/°C		mA	μA	V
		Min	Max	Typ	Max	Min	Max		Max	
BZD17C11PH	J2	10.4	11.6	4	7	0.05	0.10	50	4.0	8.2
BZD17C12PH	J3	11.4	12.7	4	7	0.05	0.10	50	3.0	9.1
BZD17C13PH	J4	12.4	14.1	5	10	0.05	0.10	50	2.0	10
BZD17C15PH	J5	13.8	15.6	5	10	0.05	0.10	25	1.0	11
BZD17C16PH	J6	15.3	17.1	6	15	0.06	0.11	25	1.0	12
BZD17C18PH	J7	16.8	19.1	6	15	0.06	0.11	25	1.0	13
BZD17C24PH	K0	22.8	25.6	7	15	0.06	0.11	25	1.0	18
BZD17C27PH	K1	25.1	28.9	7	15	0.06	0.11	25	1.0	20
BZD17C33PH	K3	31	35	8	15	0.06	0.11	25	1.0	24
BZD17C36PH	K4	34	38	21	40	0.06	0.11	10	1.0	27
BZD17C39PH	K5	37	41	21	40	0.06	0.11	10	1.0	30
BZD17C43PH	K6	40	46	24	45	0.07	0.12	10	1.0	33
BZD17C47PH	K7	44	50	24	45	0.07	0.12	10	1.0	36
BZD17C51PH	K8	48	54	25	60	0.07	0.12	10	1.0	39
BZD17C62PH	L0	58	66	25	80	0.08	0.13	10	1.0	47
BZD17C68PH	L1	64	72	25	80	0.08	0.13	10	1.0	51
BZD17C75PH	L2	70	79	30	100	0.08	0.13	10	1.0	56
BZD17C100PH	L5	94	106	60	200	0.09	0.13	4	1.0	75
BZD17C120PH	L7	114	127	150	300	0.09	0.13	4	1.0	91
BZD17C180PH	M1	168	191	280	450	0.09	0.13	4	1.0	130
BZD17C200PH	M2	188	212	350	750	0.09	0.13	4	1.0	150
BZD17C220PH	M3	208	233	430	900	0.09	0.13	4	1.0	160

Notes:

1. Pulse test: $t_p \leq 5\text{ms}$.

CHARACTERISTICS CURVES

($T_A = 25^\circ\text{C}$ unless otherwise noted)

Fig.1 Power Dissipation vs. Ambient Temperature

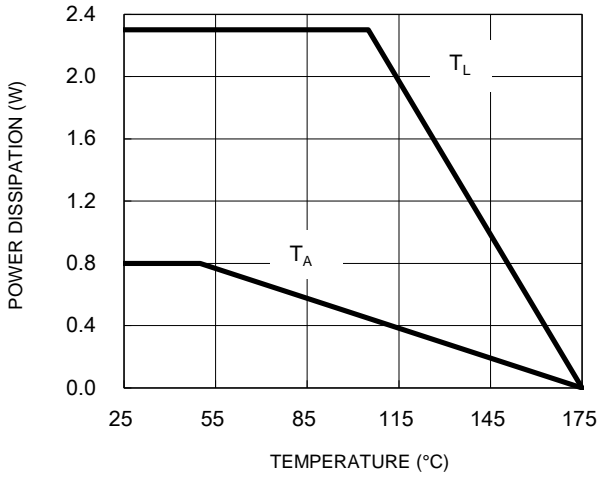


Fig.2 Typical Junction Capacitance

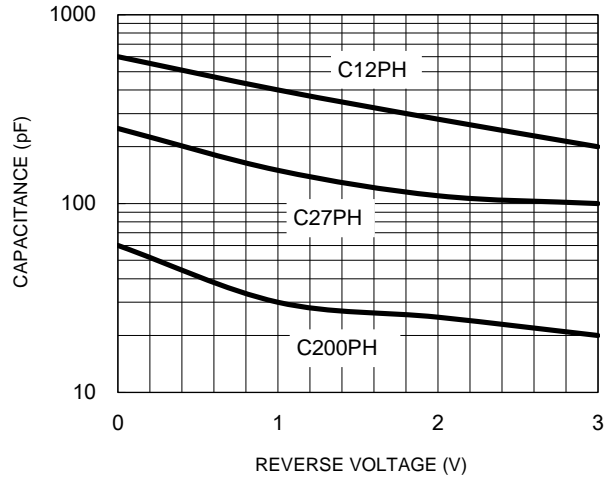
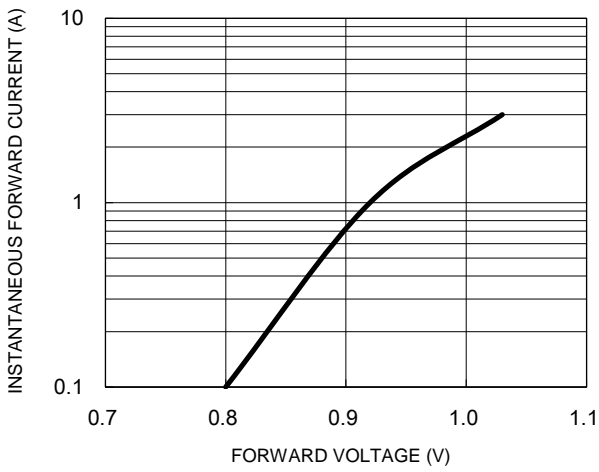
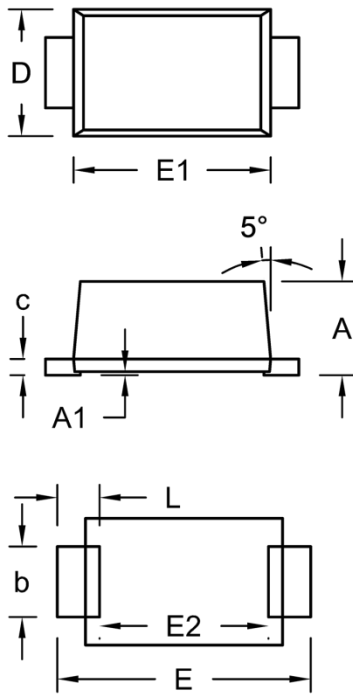


Fig.3 Typical Forward Characteristics



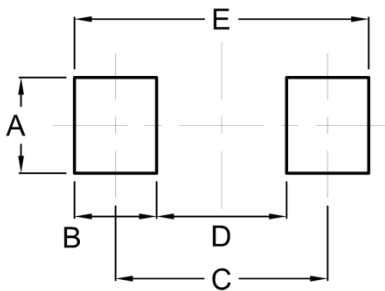
PACKAGE OUTLINE DIMENSIONS

Sub SMA



DIM.	Unit (mm)		Unit (inch)	
	Min.	Max.	Min.	Max.
A	1.23	1.43	0.048	0.056
A1	0.00	0.10	0.000	0.004
b	0.80	1.20	0.031	0.047
c	0.16	0.30	0.006	0.012
D	1.70	1.90	0.067	0.075
E	3.40	3.80	0.134	0.150
E1	2.70	2.90	0.106	0.114
E2	2.45	2.60	0.096	0.102
L	0.35	0.85	0.014	0.033

SUGGESTED PAD LAYOUT



Symbol	Unit (mm)	Unit (inch)
A	1.40	0.055
B	1.20	0.047
C	3.10	0.122
D	1.90	0.075
E	4.30	0.169

MARKING DIAGRAM



- P/N = Marking Code
- G = Green Compound
- YW = Date Code
- F = Factory Code

Notice

Specifications of the products displayed herein are subject to change without notice. TSC or anyone on its behalf assumes no responsibility or liability for any errors or inaccuracies.

Purchasers are solely responsible for the choice, selection, and use of TSC products and TSC assumes no liability for application assistance or the design of Purchasers' products.

Information contained herein is intended to provide a product description only. No license, express or implied, to any intellectual property rights is granted by this document. Except as provided in TSC's terms and conditions of sale for such products, TSC assumes no liability whatsoever, and disclaims any express or implied warranty, relating to sale and/or use of TSC products including liability or warranties relating to fitness for a particular purpose, merchantability, or infringement of any patent, copyright, or other intellectual property right.

The products shown herein are not designed for use in medical, life-saving, or life-sustaining applications. Customers using or selling these products for use in such applications do so at their own risk and agree to fully indemnify TSC for any damages resulting from such improper use or sale.