

# SACC-FP-M-M12-THR PW PP - Housing screw connection



1108115

<https://www.phoenixcontact.com/us/products/1108115>

Please be informed that the data shown in this PDF document is generated from our online catalog. Please find the complete data in the user documentation. Our general terms of use for downloads are valid.



Housing screw connection with M12 standard thread, push-pull, with O-ring, for 2-piece K-, L-, and M-coded THR contact carriers

## Your advantages

- Manufacturer-independent M12 push-pull locking system for maximum availability
- Easy and quick cabling of devices and systems in hard-to-reach areas
- Easy device integration, thanks to mechanical port screw connections with threaded fastening
- Flexible PCB assembly: two-piece connectors for wave and THR soldering

## Commercial data

|                                      |               |
|--------------------------------------|---------------|
| Item number                          | 1108115       |
| Packing unit                         | 1 pc          |
| Minimum order quantity               | 20 pc         |
| Sales key                            | AB23          |
| Product key                          | ABQAAE        |
| GTIN                                 | 4063151012007 |
| Weight per piece (including packing) | 8.425 g       |
| Weight per piece (excluding packing) | 8.425 g       |
| Customs tariff number                | 85366990      |
| Country of origin                    | DE            |



# SACC-FP-M-M12-THR PW PP - Housing screw connection



1108115

<https://www.phoenixcontact.com/us/products/1108115>

## Technical data

### Notes

|         |  |
|---------|--|
| General | The electrical and mechanical data specified assume that the connector pair is correctly locked and mounted. If the connector is unlocked and if there is a danger of contamination, the connector must be sealed using a protective cap > IP54. Influences arising from litz wires, cables or PCB assembly must also be taken into consideration. |
| General | If necessary, order locking nut separately   |

### Product properties

|              |                     |
|--------------|---------------------|
| Product type | Panel mounting base |
|--------------|---------------------|

### Connection data

|                   |                            |
|-------------------|----------------------------|
| Connection method | THR- und Wellenlötkontakte |
|-------------------|----------------------------|

### Material specifications

|  |                      |
|--|----------------------|
| Material                               | Brass, nickel-plated |
| Flammability rating according to UL 94 | V0                   |
| Seal material                          | FKM                  |
| Material of grip body                  | Brass, nickel-plated |
| Material for screw connection          | Brass, nickel-plated |

### Connector

#### Connection 1

|                   |           |
|-------------------|-----------|
| Head design       | Pin       |
| Head thread type  | M12       |
| Head locking type | Push-Pull |

### Mechanical properties

#### Mechanical data

|                             |       |
|-----------------------------|-------|
| Insertion/withdrawal cycles | > 100 |
|-----------------------------|-------|

### Environmental and real-life conditions

#### Ambient conditions

|  |   |
|--|---|
| Degree of protection (when plugged in) | IP67 (correctly plugged in and locked)          |
| Degree of protection                   | IP67 (correctly plugged in and locked)          |
|  | IP67, when in locked state                      |
| Ambient temperature (operation)        | -25 °C ... 85 °C (Plug / socket)                |
|  | -40 °C ... 85 °C (without mechanical actuation) |

### Standards and regulations

M12



# SACC-FP-M-M12-THR PW PP - Housing screw connection



1108115

<https://www.phoenixcontact.com/us/products/1108115>

|                          |                 |
|--------------------------|-----------------|
| Standard designation     | M12 connector   |
| Standards/specifications | IEC 61076-2-010 |
| Note                     | Push-pull       |

## Mounting

|                   |                            |
|-------------------|----------------------------|
| Mounting type     | Front mounting M14 x 1     |
| Connection method | THR- und Wellenlötkontakte |



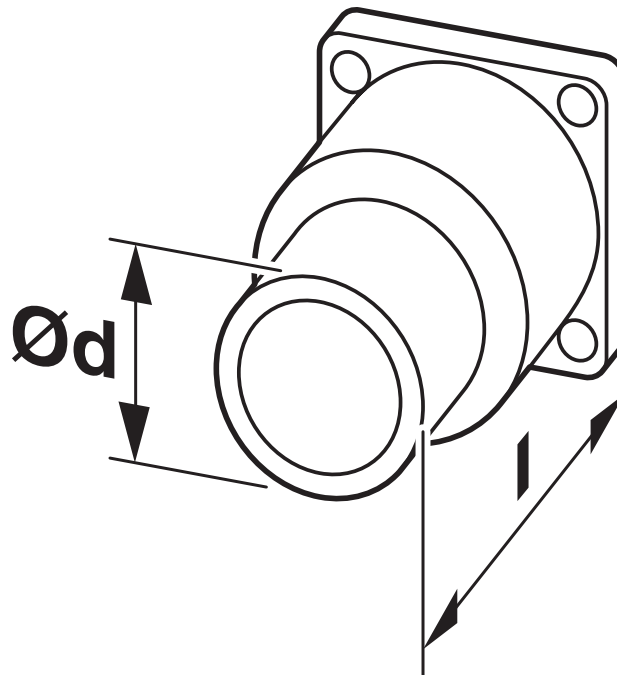
# SACC-FP-M-M12-THR PW PP - Housing screw connection

1108115

<https://www.phoenixcontact.com/us/products/1108115>

## Drawings

Dimensional drawing



Technical drawings can be found under Downloads



# SACC-FP-M-M12-THR PW PP - Housing screw connection



1108115

<https://www.phoenixcontact.com/us/products/1108115>

## Classifications

### ECLASS

|             |          |
|-------------|----------|
| ECLASS-11.0 | 27440224 |
| ECLASS-12.0 | 27440224 |
| ECLASS-13.0 | 27440224 |

### ETIM

|          |          |
|----------|----------|
| ETIM 9.0 | EC003556 |
|----------|----------|

### UNSPSC

|             |          |
|-------------|----------|
| UNSPSC 21.0 | 39121400 |
|-------------|----------|



# SACC-FP-M-M12-THR PW PP - Housing screw connection



1108115  
<https://www.phoenixcontact.com/us/products/1108115>

## Environmental product compliance

|            |   |
|------------|---|
| China RoHS | Environmentally friendly use period: unlimited = EFUP-e |
|            | No hazardous substances above threshold values          |

Phoenix Contact 2024 © - all rights reserved  
<https://www.phoenixcontact.com>

Phoenix Contact USA  
586 Fulling Mill Road  
Middletown, PA 17057, United States  
(+717) 944-1300  
[info@phoenixcon.com](mailto:info@phoenixcon.com)