

## Insulated Gate Bipolar Transistor Ultralow $V_{CE(on)}$ , 250 A


**SOT-227**
**FEATURES**

- Standard: optimized for minimum saturation voltage and low speed
- Lowest conduction losses available
- Fully isolated package (2500 V<sub>AC</sub>)
- Very low internal inductance (5 nH typical)
- Industry standard outline
- Designed and qualified for industrial level
- UL approved file E78996
- Material categorization: for definitions of compliance please see [www.vishay.com/doc?99912](http://www.vishay.com/doc?99912)


**RoHS  
COMPLIANT**

PRIMARY CHARACTERISTICS	
$V_{CES}$	600 V
$V_{CE(on)}$ (typical) at 200 A, 25 °C	1.16 V
$I_C$ at $T_C = 90$ °C	250 A
Speed	DC to 1 kHz
Package	SOT-227
Circuit configuration	Single switch no diode

**BENEFITS**

- Designed for increased operating efficiency in power conversion: UPS, SMPS, TIG welding, induction heating
- Easy to assemble and parallel
- Direct mounting to heatsink
- Plug-in compatible with other SOT-227 packages

ABSOLUTE MAXIMUM RATINGS				
PARAMETER	SYMBOL	TEST CONDITIONS	MAX.	UNITS
Collector to emitter voltage	$V_{CES}$		600	V
Continuous collector current	$I_C$	$T_C = 25$ °C	359	A
		$T_C = 90$ °C	250	
Pulsed collector current	$I_{CM}$	$T_C = 175$ °C, $t_p = 6$ ms, $V_{GE} = 15$ V	945	
Clamped Inductive load current	$I_{LM}$		250	
Gate to emitter voltage	$V_{GE}$		± 20	V
Power dissipation	$P_D$	$T_C = 25$ °C	750	W
		$T_C = 90$ °C	425	
Isolation voltage	$V_{ISOL}$	Any terminal to case, $t = 1$ min	2500	V

ELECTRICAL SPECIFICATIONS ( $T_J = 25$ °C unless otherwise noted)						
PARAMETER	SYMBOL	TEST CONDITIONS	MIN.	TYP.	MAX.	UNITS
Collector to emitter breakdown voltage	$V_{(BR)CES}$	$V_{GE} = 0$ V, $I_C = 0.4$ mA	600	-	-	V
Collector to emitter voltage	$V_{CE(on)}$	$I_C = 100$ A	-	1.01	1.16	
		$I_C = 200$ A	-	1.16	-	
		$I_C = 100$ A, $T_J = 125$ °C	-	0.96	-	
		$I_C = 200$ A, $T_J = 125$ °C	-	1.18	-	
		$I_C = 100$ A, $T_J = 150$ °C	-	0.95	-	
		$I_C = 200$ A, $T_J = 150$ °C	-	1.18	-	
Gate threshold voltage	$V_{GE(th)}$	$V_{CE} = V_{GE}$ , $I_C = 2$ mA	3.8	4.9	6.3	
		$V_{CE} = V_{GE}$ , $I_C = 2$ mA, $T_J = 125$ °C	-	3.5	-	
Temperature coefficient of threshold voltage	$\Delta V_{GE(th)}/\Delta T_J$	$V_{CE} = V_{GE}$ , $I_C = 2$ mA, 25 °C to 125 °C	-	-14	-	mV/°C
Collector to emitter leakage current	$I_{CES}$	$V_{GE} = 0$ V, $V_{CE} = 600$ V	-	0.2	100	µA
		$V_{GE} = 0$ V, $V_{CE} = 600$ V, $T_J = 125$ °C	-	51	-	
		$V_{GE} = 0$ V, $V_{CE} = 600$ V, $T_J = 150$ °C	-	508	-	
Gate to emitter leakage current	$I_{GES}$	$V_{GE} = \pm 20$ V	-	-	± 250	nA



<b>SWITCHING CHARACTERISTICS</b> ( $T_J = 25\text{ }^\circ\text{C}$ unless otherwise specified)							
PARAMETER	SYMBOL	TEST CONDITIONS	MIN.	TYP.	MAX.	UNITS	
Total gate charge (turn-on)	$Q_g$	$I_C = 75\text{ A}, V_{CC} = 520\text{ V}, V_{GE} = 15\text{ V}$	-	909	-	nC	
Gate-to-emitter charge (turn-on)	$Q_{ge}$		-	139	-		
Gate-to-collector charge (turn-on)	$Q_{gc}$		-	249	-		
Turn-on switching loss	$E_{on}$	$T_J = 25\text{ }^\circ\text{C}$ $I_C = 100\text{ A}$ $V_{CC} = 480\text{ V}$ $V_{GE} = 15\text{ V}$ $R_g = 5.0\text{ }\Omega$ $L = 500\text{ }\mu\text{H}$	-	1.61	-	mJ	
Turn-off switching loss	$E_{off}$		-	6.65	-		
Total switching loss	$E_{tot}$		-	8.26	-		
Turn-on delay time	$t_{d(on)}$		-	469	-		ns
Rise time	$t_r$		-	36	-		
Turn-off delay time	$t_{d(off)}$		-	539	-		
Fall time	$t_f$		-	109	-		
Turn-on switching loss	$E_{on}$		$T_J = 125\text{ }^\circ\text{C}$ $I_C = 100\text{ A}$ $V_{CC} = 480\text{ V}$ $V_{GE} = 15\text{ V}$ $R_g = 5.0\text{ }\Omega$ $L = 500\text{ }\mu\text{H}$	-	2.03	-	mJ
Turn-off switching loss	$E_{off}$	-		9.65	-		
Total switching loss	$E_{tot}$	-		11.68	-		
Turn-on delay time	$t_{d(on)}$	$T_J = 125\text{ }^\circ\text{C}$ $I_C = 100\text{ A}$ $V_{CC} = 480\text{ V}$ $V_{GE} = 15\text{ V}$ $R_g = 5.0\text{ }\Omega$ $L = 500\text{ }\mu\text{H}$		-	498	-	ns
Rise time	$t_r$			-	43	-	
Turn-off delay time	$t_{d(off)}$			-	640	-	
Fall time	$t_f$			-	128	-	
Internal emitter inductance	$L_E$	Between lead and center of die contact		-	5.0	-	nH
Input capacitance	$C_{ies}$	$V_{GE} = 0\text{ V}, V_{CC} = 25\text{ V}, f = 1.0\text{ MHz}$	-	24 200	-	pF	
Output capacitance	$C_{oes}$		-	300	-		
Reverse transfer capacitance	$C_{res}$		-	84	-		
Reverse bias safe operating area	RBSOA	$T_J = 175\text{ }^\circ\text{C}, I_C = 250\text{ A}, R_g = 5.0\text{ }\Omega,$ $V_{GE} = 15\text{ V to }0\text{ V}, V_{CC} = 400\text{ V},$ $V_p = 600\text{ V}$	Fullsquare				

<b>THERMAL AND MECHANICAL SPECIFICATIONS</b>						
PARAMETER	SYMBOL	TEST CONDITIONS	MIN.	TYP.	MAX.	UNITS
Junction and storage temperature range	$T_J, T_{Stg}$		-40	-	175	$^\circ\text{C}$
Thermal resistance junction to case	$R_{thJC}$		-	-	0.2	$^\circ\text{C/W}$
Thermal resistance case to heatsink	$R_{thCS}$	Flat, greased surface	-	0.05	-	
Weight			-	30	-	g
Mounting torque		Torque to terminal	-	-	1.1 (9.7)	Nm (lbf.in)
		Torque to heatsink	-	-	1.8 (15.9)	Nm (lbf.in)
Case style		SOT-227				

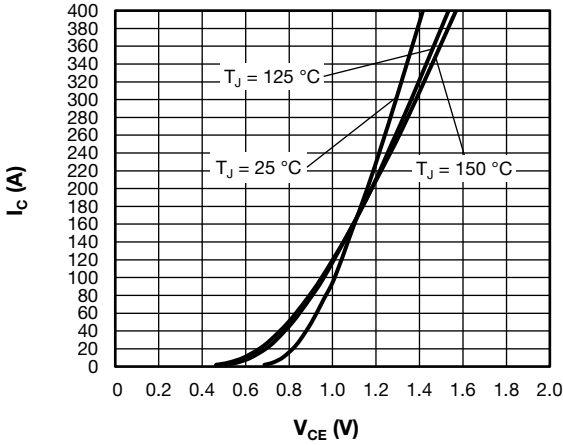


Fig. 1 - Typical Trench IGBT Output Characteristics,  $V_{GE} = 15\text{ V}$

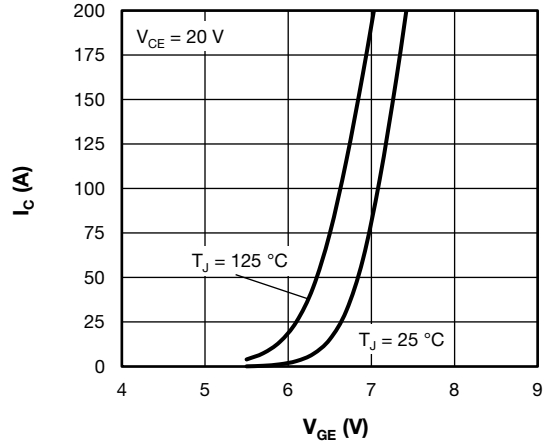


Fig. 4 - Typical Trench IGBT Transfer Characteristics

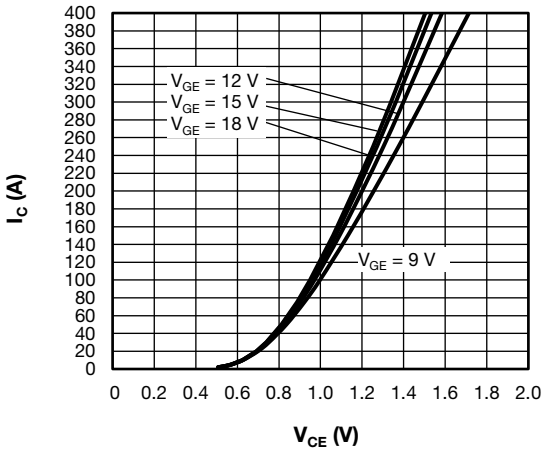


Fig. 2 - Typical Trench IGBT Output Characteristics,  $T_J = 125\text{ °C}$

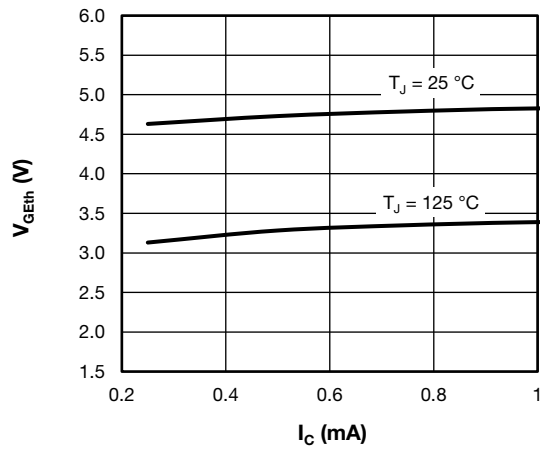


Fig. 5 - Typical Trench IGBT Gate Threshold Voltage

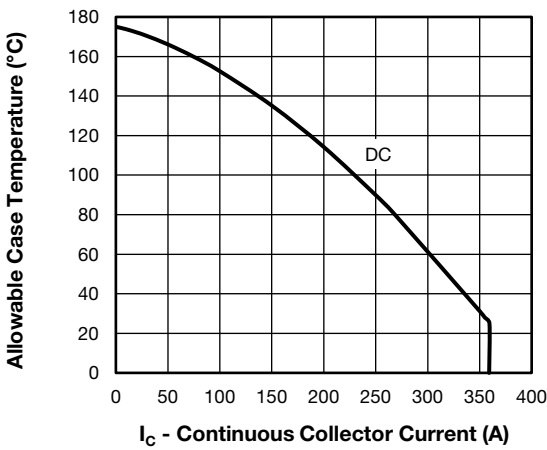


Fig. 3 - Typical Trench IGBT Continuous Collector Current vs. Case Temperature

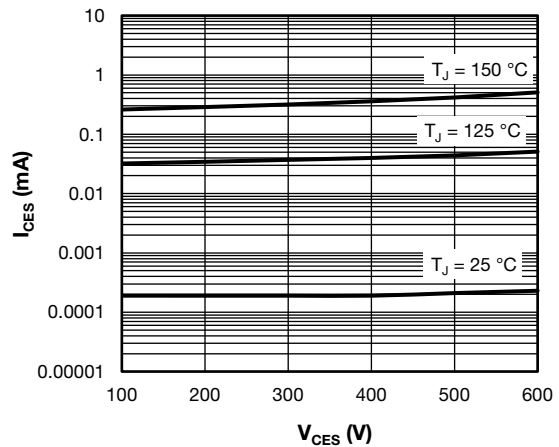


Fig. 6 - Typical Trench IGBT Zero Gate Voltage Collector Current

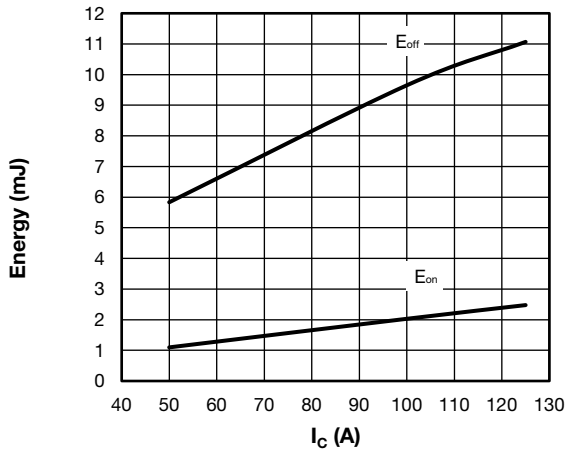


Fig. 7 - Typical Trench IGBT Energy Loss vs.  $I_C$   
 $T_J = 125^\circ\text{C}$ ,  $V_{CC} = 480\text{ V}$ ,  $R_g = 5\ \Omega$ ,  $V_{GE} = +15\text{ V}/-15\text{ V}$ ,  $L = 500\ \mu\text{H}$

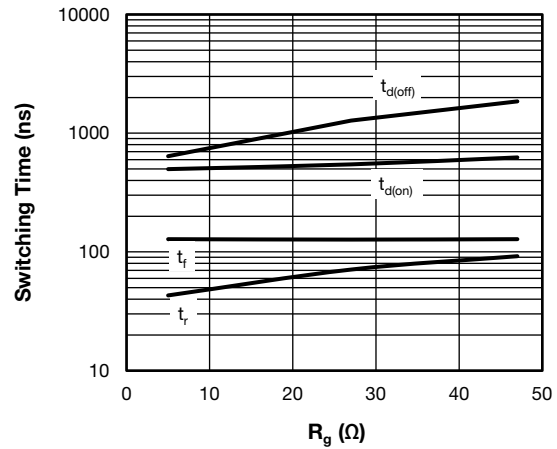


Fig. 10 - Typical Trench IGBT Switching Time vs.  $R_g$   
 $T_J = 125^\circ\text{C}$ ,  $V_{CC} = 480\text{ V}$ ,  $I_C = 100\text{ A}$ ,  $V_{GE} = +15\text{ V}/-15\text{ V}$ ,  $L = 500\ \mu\text{H}$

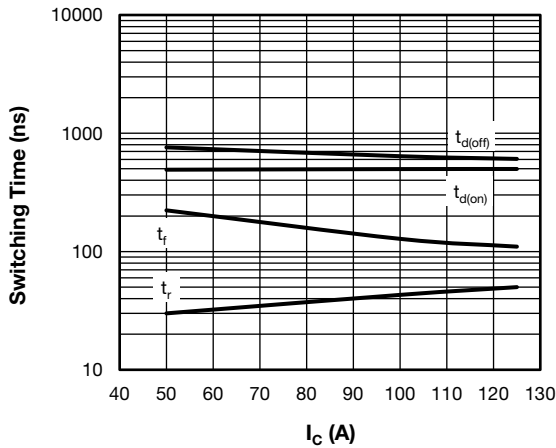


Fig. 8 - Typical Trench IGBT Switching Time vs.  $I_C$   
 $T_J = 125^\circ\text{C}$ ,  $V_{CC} = 480\text{ V}$ ,  $R_g = 5\ \Omega$ ,  $V_{GE} = +15\text{ V}/-15\text{ V}$ ,  $L = 500\ \mu\text{H}$

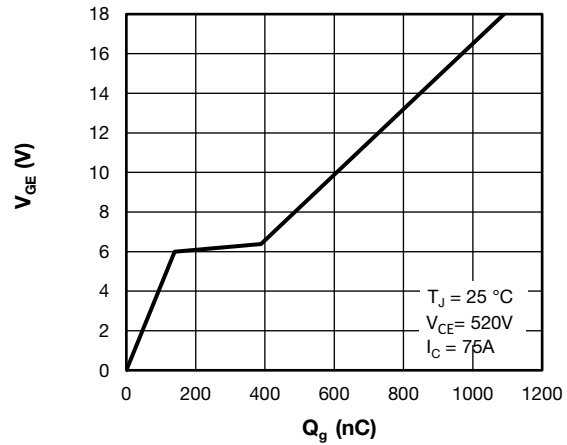


Fig. 11 - Typical Trench IGBT Gate Charge vs. Gate to Emitter Voltage  
 $T_J = 25^\circ\text{C}$   
 $V_{CE} = 520\text{ V}$   
 $I_C = 75\text{ A}$

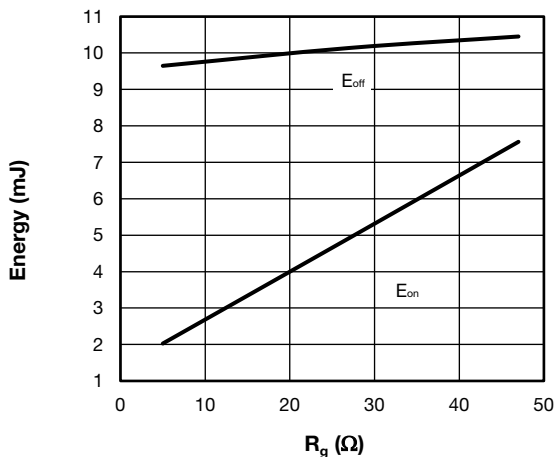


Fig. 9 - Typical Trench IGBT Energy Loss vs.  $R_g$   
 $T_J = 125^\circ\text{C}$ ,  $V_{CC} = 480\text{ V}$ ,  $I_C = 100\text{ A}$ ,  $V_{GE} = +15\text{ V}/-15\text{ V}$ ,  $L = 500\ \mu\text{H}$

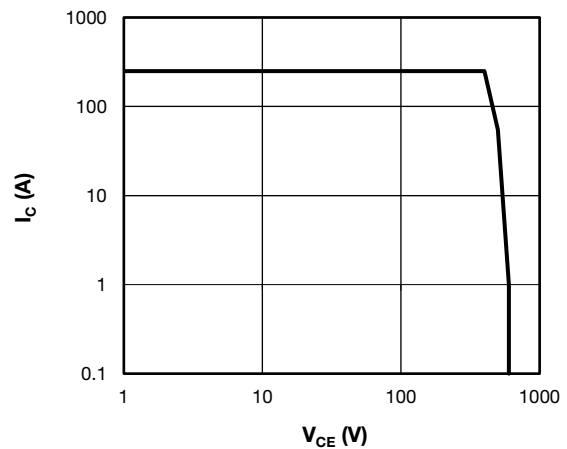


Fig. 12 - Typical Trench IGBT Reverse BIAS SOA  
 $T_J = 175^\circ\text{C}$ ,  $I_C = 250\text{ A}$ ,  $R_g = 4.7\ \Omega$ ,  $V_{GE} = +15\text{ V}/0\text{ V}$ ,  
 $V_{CC} = 400\text{ V}$ ,  $V_p = 600\text{ V}$

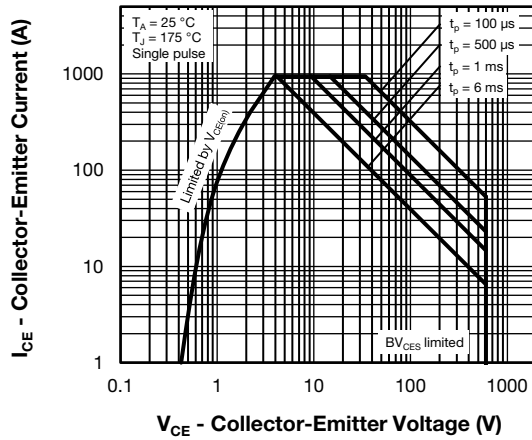


Fig. 13 - Typical Trench IGBT Safe Operating Area

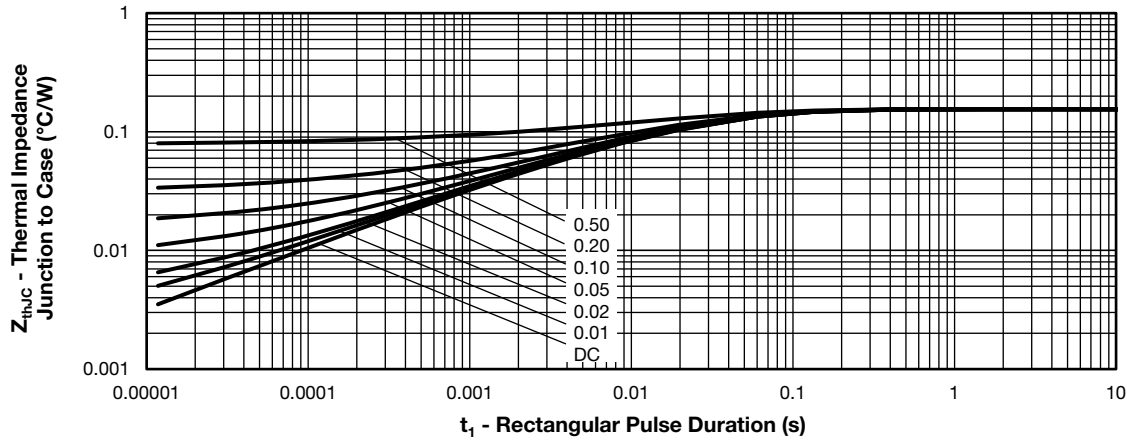
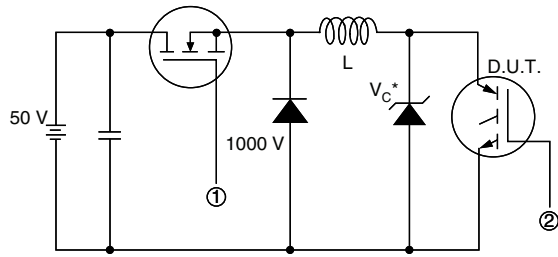


Fig. 14 - Maximum Thermal Impedance  $Z_{thJC}$  Characteristics



\* Driver same type as D.U.T.;  $V_C = 80\%$  of  $V_{CE(max)}$   
**Note:** Due to the 50 V power supply, pulse width and inductor will increase to obtain rated  $I_d$

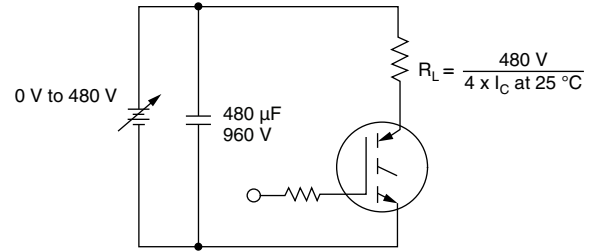
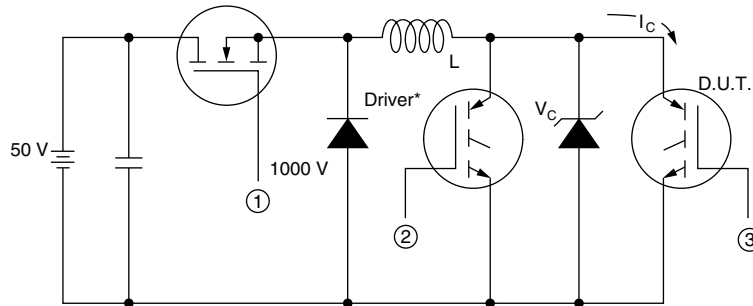


Fig. 16 - Pulsed Collector Current Test Circuit

Fig. 15 - Clamped Inductive Load Test Circuit



\* Driver same type as D.U.T.,  $V_C = 480\text{ V}$

Fig. 17 - Switching Lost Test Circuit

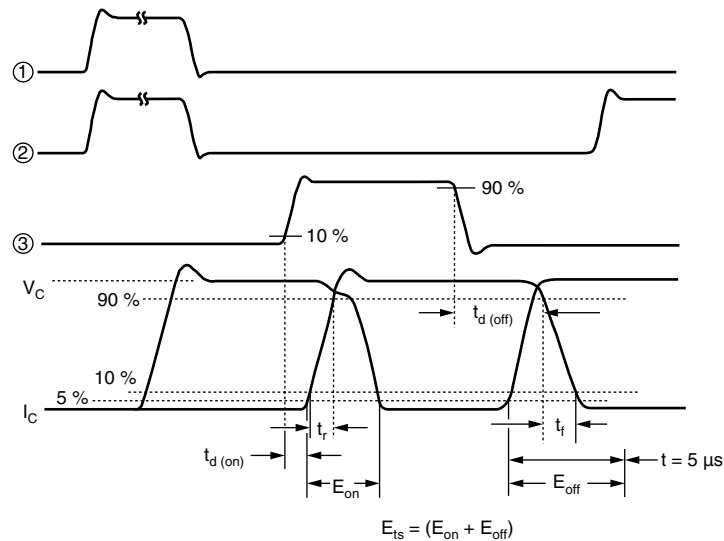


Fig. 18 - Switching Loss Waveforms

## ORDERING INFORMATION TABLE

Device code	VS-	G	T	250	S	A	60	S
	1	2	3	4	5	6	7	8

1	- Vishay Semiconductors product
2	- Insulated gate bipolar transistor (IGBT)
3	- Trench IGBT silicon
4	- Current rating (250 = 250 A)
5	- Circuit configuration (S = single switch no diode)
6	- Package indicator (A = SOT-227)
7	- Voltage rating (60 = 600 V)
8	- Speed/type (S = standard speed)

CIRCUIT CONFIGURATION		
CIRCUIT	CIRCUIT CONFIGURATION CODE	CIRCUIT DRAWING
Single switch, no diode	S	 

LINKS TO RELATED DOCUMENTS	
Dimensions	<a href="http://www.vishay.com/doc?95423">www.vishay.com/doc?95423</a>
Packaging information	<a href="http://www.vishay.com/doc?95425">www.vishay.com/doc?95425</a>



# SOT-227 Generation 2

**DIMENSIONS** in millimeters (inches)



**Note**

- Controlling dimension: millimeter





## Disclaimer

ALL PRODUCT, PRODUCT SPECIFICATIONS AND DATA ARE SUBJECT TO CHANGE WITHOUT NOTICE TO IMPROVE RELIABILITY, FUNCTION OR DESIGN OR OTHERWISE.

Vishay Intertechnology, Inc., its affiliates, agents, and employees, and all persons acting on its or their behalf (collectively, "Vishay"), disclaim any and all liability for any errors, inaccuracies or incompleteness contained in any datasheet or in any other disclosure relating to any product.

Vishay makes no warranty, representation or guarantee regarding the suitability of the products for any particular purpose or the continuing production of any product. To the maximum extent permitted by applicable law, Vishay disclaims (i) any and all liability arising out of the application or use of any product, (ii) any and all liability, including without limitation special, consequential or incidental damages, and (iii) any and all implied warranties, including warranties of fitness for particular purpose, non-infringement and merchantability.

Statements regarding the suitability of products for certain types of applications are based on Vishay's knowledge of typical requirements that are often placed on Vishay products in generic applications. Such statements are not binding statements about the suitability of products for a particular application. It is the customer's responsibility to validate that a particular product with the properties described in the product specification is suitable for use in a particular application. Parameters provided in datasheets and / or specifications may vary in different applications and performance may vary over time. All operating parameters, including typical parameters, must be validated for each customer application by the customer's technical experts. Product specifications do not expand or otherwise modify Vishay's terms and conditions of purchase, including but not limited to the warranty expressed therein.

Hyperlinks included in this datasheet may direct users to third-party websites. These links are provided as a convenience and for informational purposes only. Inclusion of these hyperlinks does not constitute an endorsement or an approval by Vishay of any of the products, services or opinions of the corporation, organization or individual associated with the third-party website. Vishay disclaims any and all liability and bears no responsibility for the accuracy, legality or content of the third-party website or for that of subsequent links.

Except as expressly indicated in writing, Vishay products are not designed for use in medical, life-saving, or life-sustaining applications or for any other application in which the failure of the Vishay product could result in personal injury or death. Customers using or selling Vishay products not expressly indicated for use in such applications do so at their own risk. Please contact authorized Vishay personnel to obtain written terms and conditions regarding products designed for such applications.

No license, express or implied, by estoppel or otherwise, to any intellectual property rights is granted by this document or by any conduct of Vishay. Product names and markings noted herein may be trademarks of their respective owners.