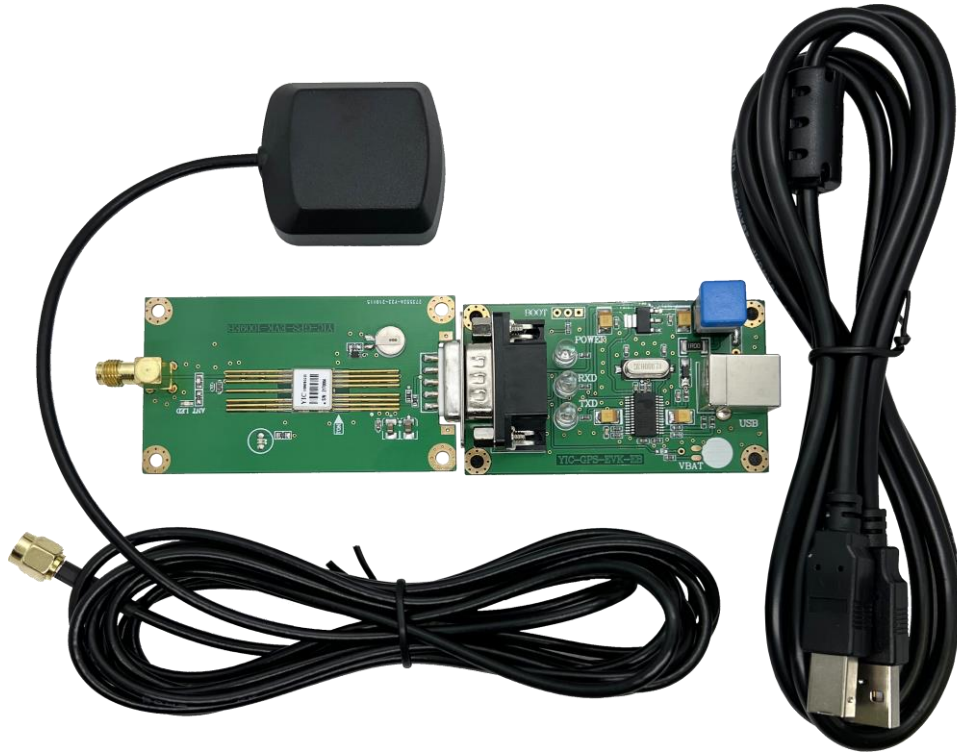


YIC



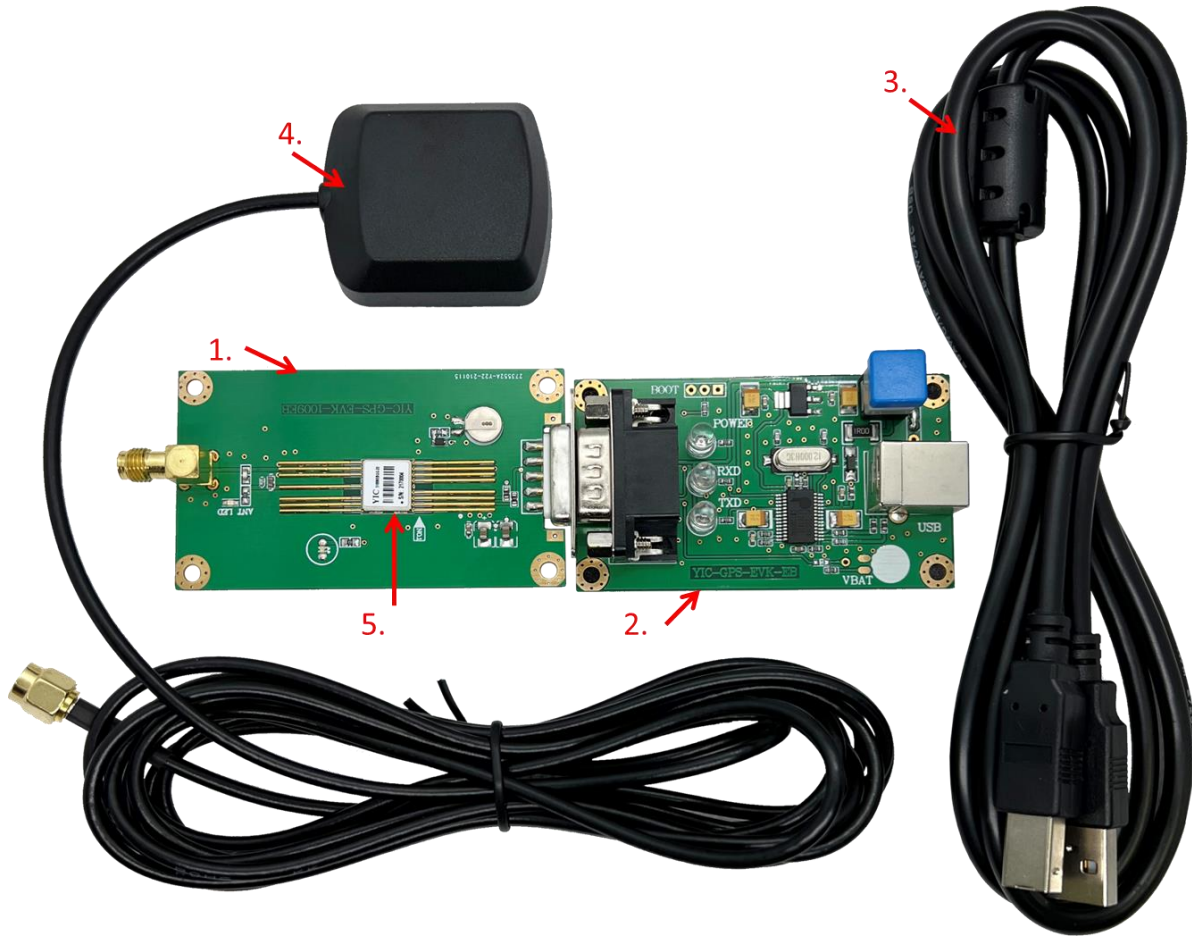
Evaluation Kit for YIC31009EB Series

EVK-YIC31009EBGG

User Guide


www.yic.com.tw

1. Contents of EVK-YIC31009EBGG

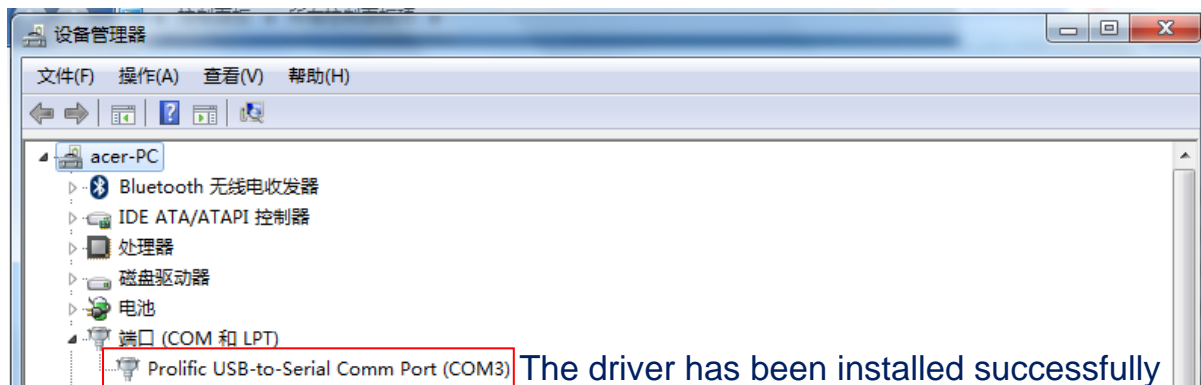


	Item	Description
1.	YIC-GPS-EVK-1009EB	Main Board
2.	YIC-GPS-EVK-1009EB	Adaptor Board
3.	USB Cable	USB Type B to USB Type A
4.	ATGG4336M-SMA-3	Single Band GNSS L1 Antenna
5.	YIC31009EBGG	GPS+GLONASS Module

2. Install the PL2303 USB driver to PC

 PL2303_Prolific_DriverInstaller_v1210.exe

3.1 Install the PL2303 USB driver, open the computer control panel, check the corresponding serial port.

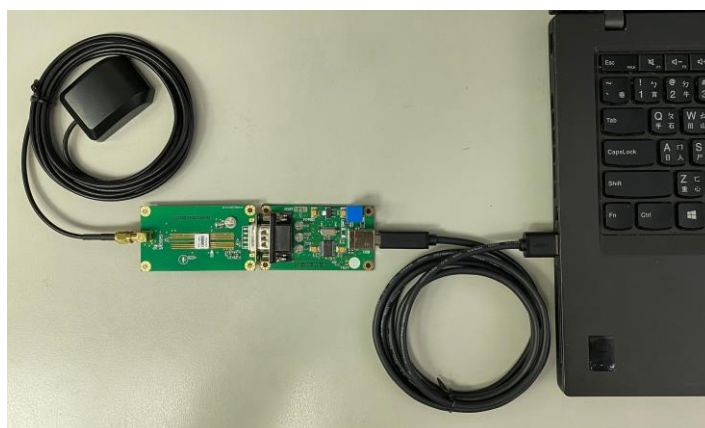


3. Connection diagram

3.1 Carefully slide the DUT GPS module into main board, pin 1 of the module corresponds to the arrow on main board.



3.2 Test connection



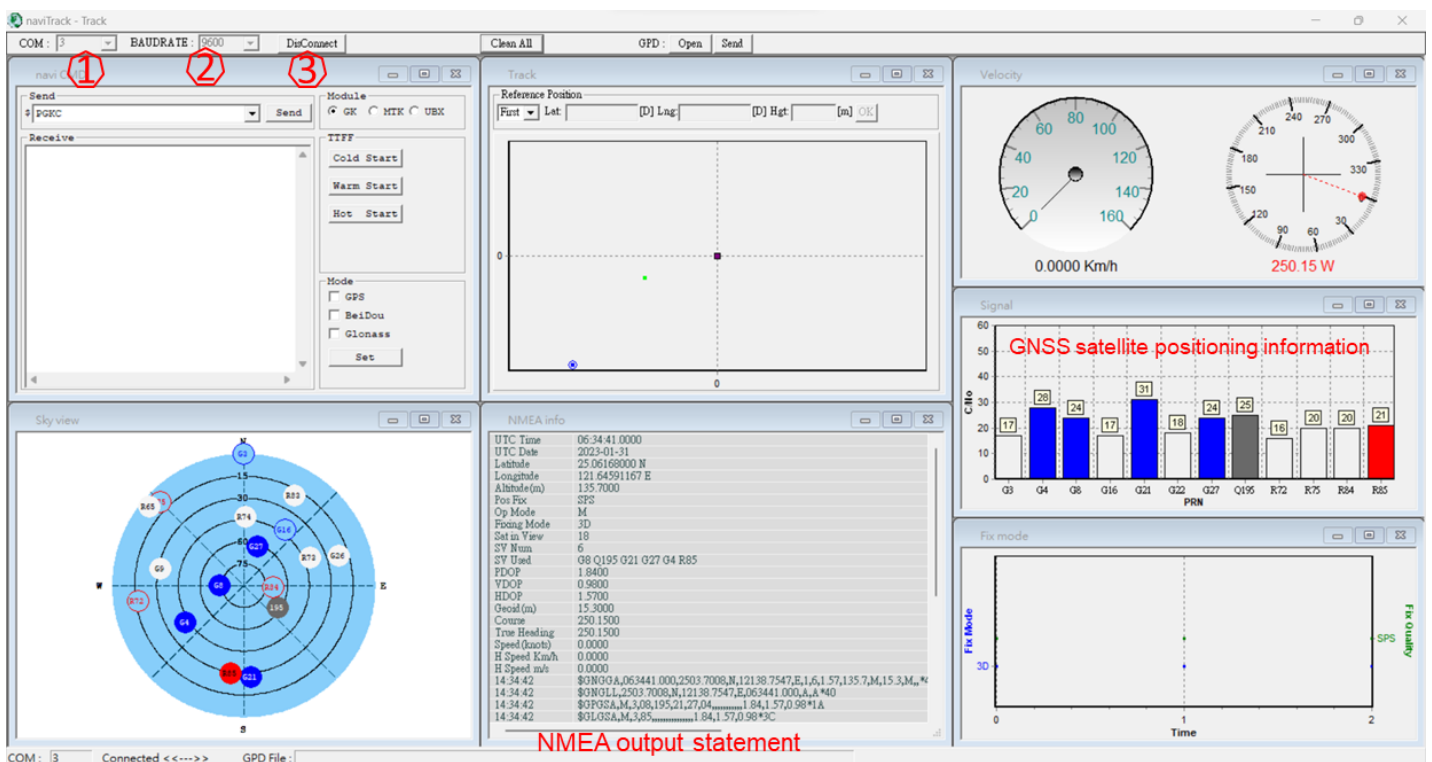
4. Install test software & start

4.1 For YIC31009EB series (Goke chip based)

4.1-1 Install test software: naviTrack

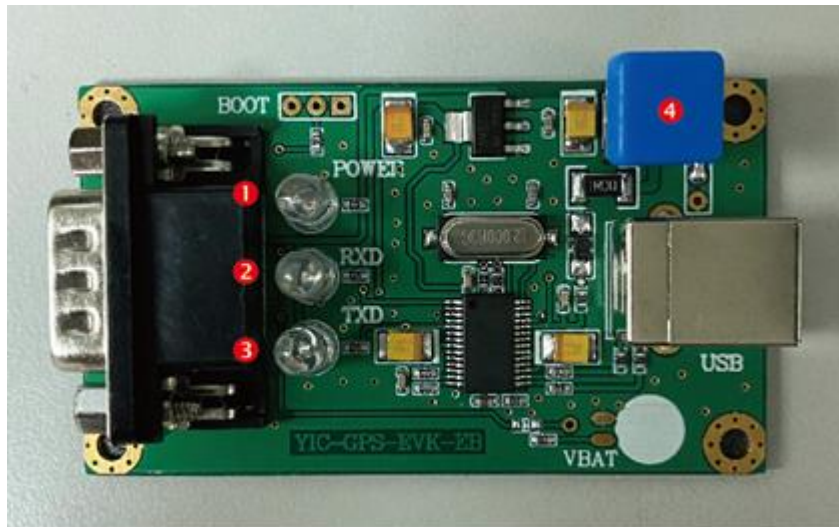
4.1-2 Software setting

- ① Select the corresponding serial port
- ② Select the corresponding baud rate (9600 or 115200,.....)
- ③ Click Connect to start the test



5. LED and Push Button description

5.1 Adaptor Board



- ① Red LED: POWER, always on when power on
- ② Blue LED: RXD, often light while DUT GPS module receiving data
- ③ Green LED: TXD, flash once per second when DUT GPS module start sending data
- ④ Push Button: POWER, push to power on and off the EVK

5.2 Main Board

PPS LED: Flash once per second after satellite position fixed