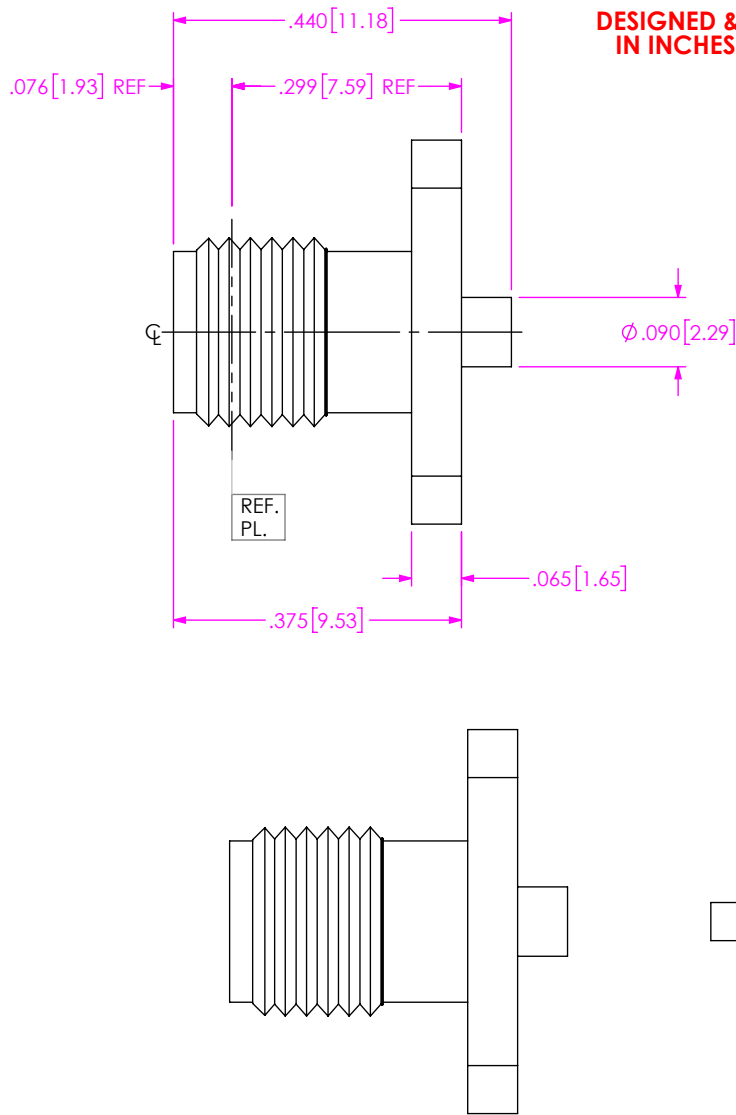


DO NOT
SCALE FROM
THIS PRINT



DESIGNED & DIMENSIONED
IN INCHES[MILLIMETERS]

PRF01-J-C-EE-047D-4D

SERIES
-01: SMA

GENDER
-J: JACK

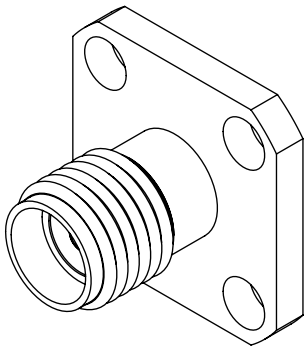
TYPE
-C: CABLE

FINISH
-EE: 50μ" EXTRA HEAVY GOLD
CENTER CONTACT, 50μ" EXTRA
HEAVY GOLD OUTER CONTACT

TERMINATION
-D: DIRECT SOLDER

ORIENTATION
-4: 4 HOLE FLANGE


CABLE TYPE
-047D: .047" SEMI-RIGID



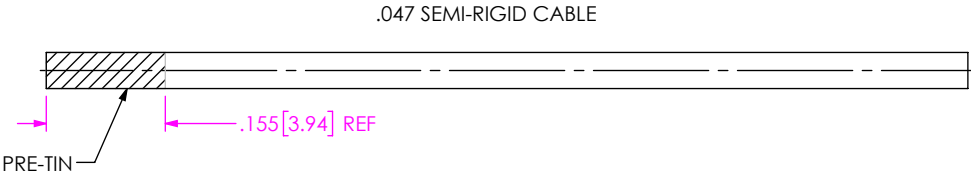
EXPLODED VIEW
NOT TO SCALE
(FOR CLARITY ONLY)

F:\DWG\MISC\MKTG\PRF01-J-C-EE-047D-4D-MKT.SLDDRW

- NOTES:
1. MATERIAL:
BODY, CONTACT: BERYLLIUM COPPER
INSULATOR: PTFE
 2. FINISH:
BODY, CONTACT: 50μ" MIN. GOLD OVER 50μ" MIN. NICKEL PLATE
 3. PCI P/N: 3844

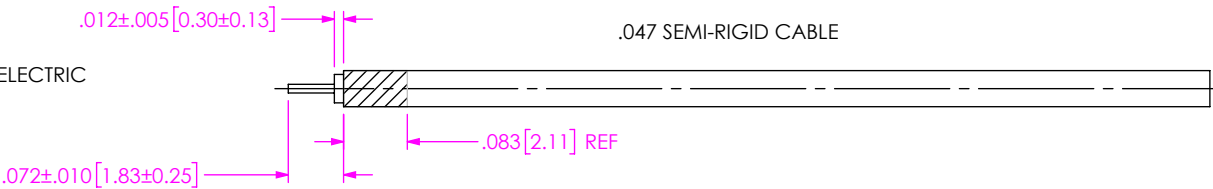
| | | |
|---|--|--|
| UNLESS OTHERWISE SPECIFIED, DIMENSIONS ARE IN INCHES. TOLERANCES ARE: DECIMALS ANGLES .XX: ±.01 [0.3] 1° .XXX: ±.005 [0.13] .XXXX: ±.0005 [0.013] | <p>PROPRIETARY NOTE</p> <p>THIS DOCUMENT CONTAINS CONFIDENTIAL AND PROPRIETARY INFORMATION AND ALL DESIGN, MANUFACTURING, REPRODUCTION, USE, PATENT RIGHTS AND SALES RIGHTS ARE EXPRESSLY RESERVED BY SAMTEC, INC. THIS DOCUMENT SHALL NOT BE DISCLOSED, IN WHOLE OR PART, TO ANY UNAUTHORIZED PERSON OR ENTITY NOR REPRODUCED, TRANSFERRED OR INCORPORATED IN ANY OTHER PROJECT IN ANY MANNER WITHOUT THE EXPRESS WRITTEN CONSENT OF SAMTEC, INC.</p> |  520 PARK EAST BLVD, NEW ALBANY, IN 47150 PHONE: 812-944-6733 FAX: 812-948-5047 e-Mail: info@SAMTEC.com code 55322 |
| | | DESCRIPTION: SMA JACK BH ASSEMBLY FOR .047" SEMI-RIGID CABLE |
| | | DWG. NO. PRF01-J-C-EE-047D-4D |
| DO NOT SCALE DRAWING | SHEET SCALE: 4:1 | BY: FABIAN F. 03/28/2019 SHEET 1 OF 3 |

1. PRE-TIN CABLE JACKET TO THE APPROXIMATE LENGTH SHOWN.
(OPTIONAL)



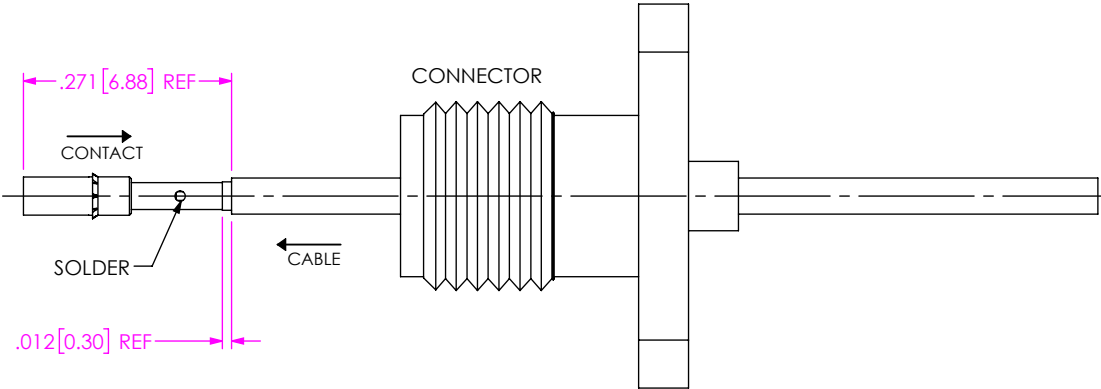
IN-PROCESS VIEW 1

2A. TRIM CABLE TO EXPOSE CENTER CONDUCTOR & DIELECTRIC
2B. PRE-TIN CABLE CENTER CONDUCTOR.



IN-PROCESS VIEW 2

3A. PUSH PREPARED CABLE END THROUGH
CONNECTOR AS SHOWN.
3B. SOLDER CENTER CONTACT TO CABLE CENTER
CONDUCTOR FLUSH TO CABLE DIELECTRIC.



IN-PROCESS VIEW 3

• PROPRIETARY NOTE •
THIS DOCUMENT CONTAINS CONFIDENTIAL AND
PROPRIETARY INFORMATION AND ALL DESIGN,
MANUFACTURING, REPRODUCTION, USE, PATENT RIGHTS
AND SALES RIGHTS ARE EXPRESSLY RESERVED BY SAMTEC,
INC. THIS DOCUMENT SHALL NOT BE DISCLOSED, IN WHOLE
OR PART, TO ANY UNAUTHORIZED PERSON OR ENTITY NOR
REPRODUCED, TRANSFERRED OR INCORPORATED IN ANY
OTHER PROJECT IN ANY MANNER WITHOUT THE EXPRESS
WRITTEN CONSENT OF SAMTEC, INC.

DO NOT SCALE DRAWING
SHEET SCALE: 4:1

samtec

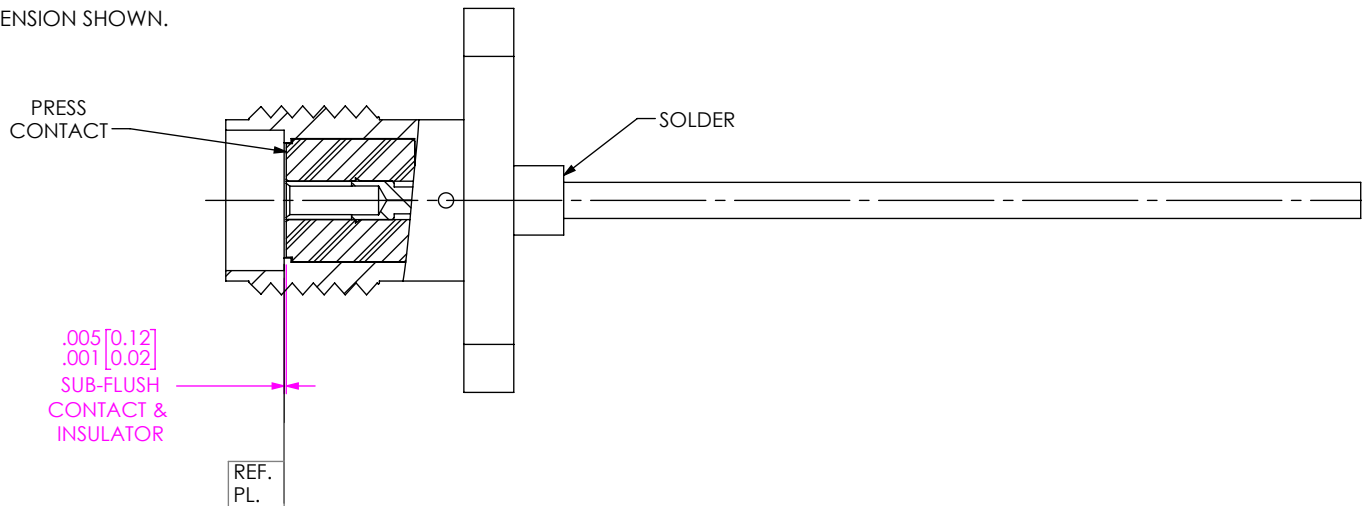
520 PARK EAST BLVD, NEW ALBANY, IN 47150
PHONE: 812-944-6733 FAX: 812-948-5047
e-Mail: info@SAMTEC.com code 55322

DESCRIPTION: 1.85mm JACK BULKHEAD ASSEMBLY
FOR .047" SEMI-RIGID CABLE

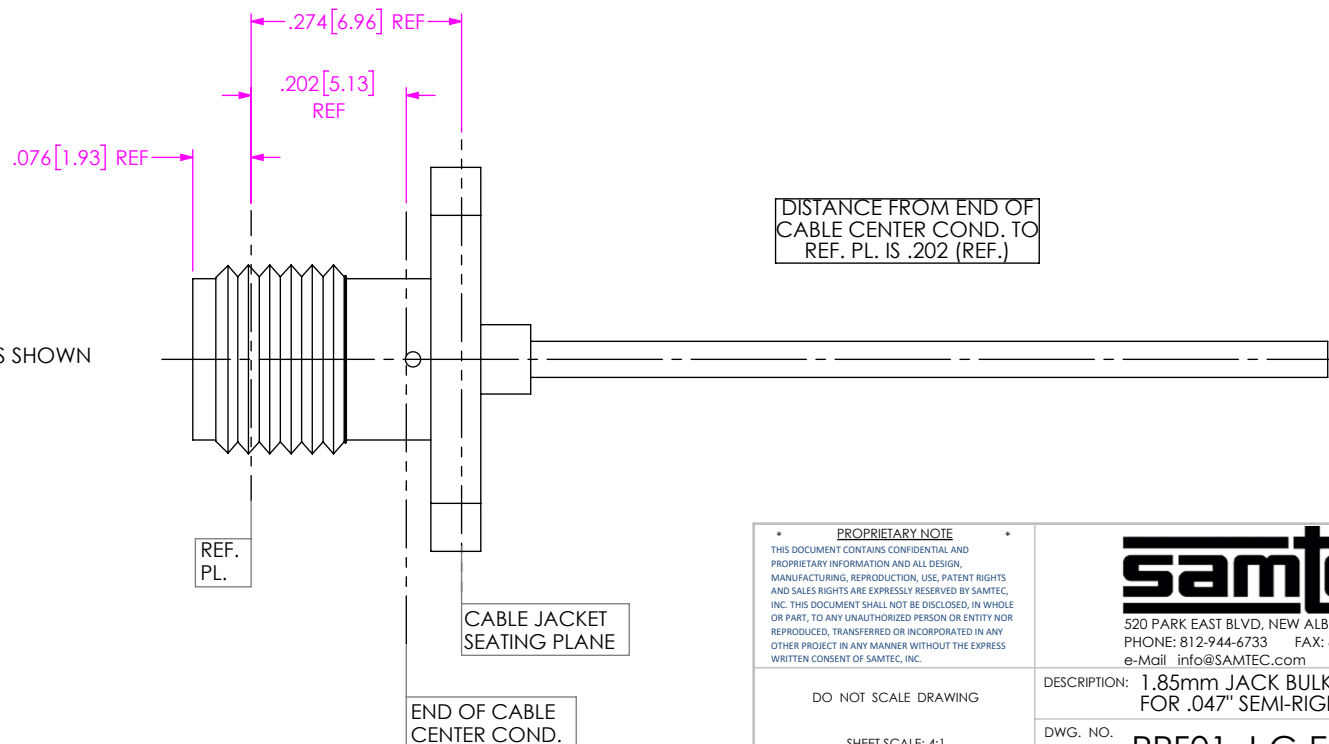
DWG. NO. PRF01-J-C-EE-047D-4D

BY: FABIAN F. 03/28/2019 SHEET 2 OF 3

- 4A. PRESS-FIT CONTACT INTO CONNECTOR.
SUB-FLUSH TO REFERENCE PLANE TO DIMENSION SHOWN.
- 4B. SOLDER CABLE JACKET TO CONNECTOR
WHERE INDICATED.



IN-PROCESS VIEW 4



5. ASSEMBLED CONNECTOR DIMENSIONS ARE AS SHOWN

IN-PROCESS VIEW 5

PROPRIETARY NOTE
THIS DOCUMENT CONTAINS CONFIDENTIAL AND
PROPRIETARY INFORMATION AND ALL DESIGN,
MANUFACTURING, REPRODUCTION, USE, PATENT RIGHTS
AND SALES RIGHTS ARE EXPRESSLY RESERVED BY SAMTEC,
INC. THIS DOCUMENT SHALL NOT BE DISCLOSED, IN WHOLE
OR PART, TO ANY UNAUTHORIZED PERSON OR ENTITY NOR
REPRODUCED, TRANSFERRED OR INCORPORATED IN ANY
OTHER PROJECT IN ANY MANNER WITHOUT THE EXPRESS
WRITTEN CONSENT OF SAMTEC, INC.

DO NOT SCALE DRAWING

SHEET SCALE: 4:1

samtec

520 PARK EAST BLVD, NEW ALBANY, IN 47150
PHONE: 812-944-6733 FAX: 812-948-5047
e-Mail info@SAMTEC.com code 55322

DESCRIPTION: 1.85mm JACK BULKHEAD ASSEMBLY
FOR .047" SEMI-RIGID CABLE

DWG. NO. PRF01-J-C-EE-047D-4D

BY: FABIAN F. 03/28/2019 SHEET 3 OF 3