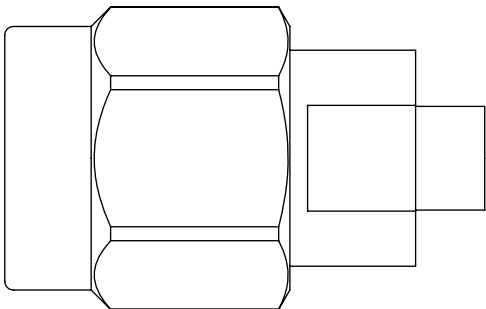
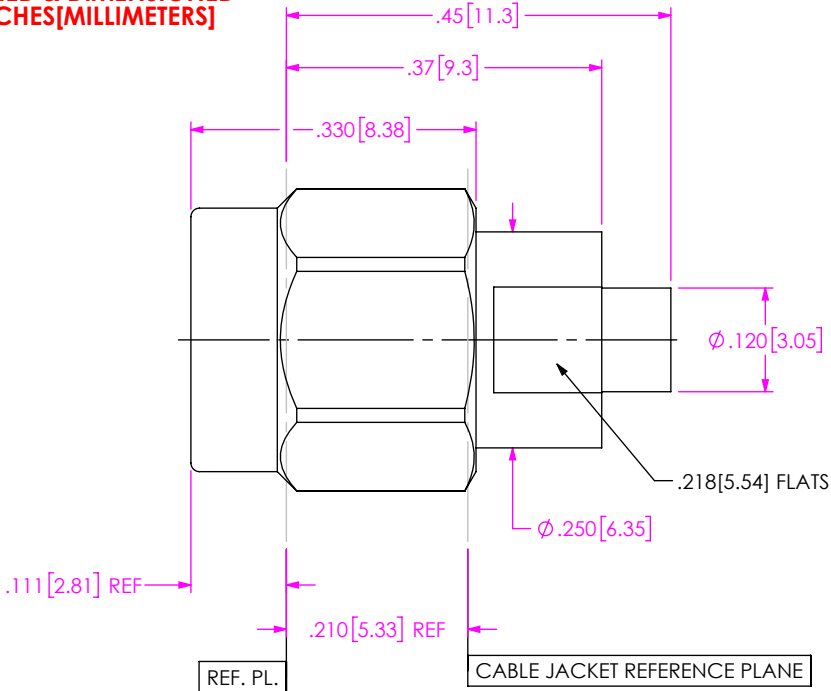


DO NOT
SCALE FROM
THIS PRINT

DESIGNED & DIMENSIONED
IN INCHES[MILLIMETERS]



EXPLODED VIEW
NOT TO SCALE
(FOR CLARITY ONLY)

PRF01-P-C-EE-405-SD

SERIES
-01: SMA

GENDER
-P: PLUG

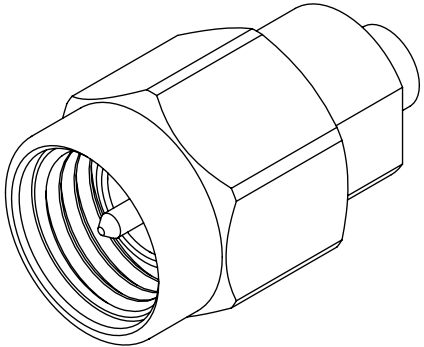
TYPE
-C: CABLE

TERMINATION
-D: DIRECT SOLDER

ORIENTATION
-S: STRAIGHT


CABLE TYPE
-405: RG-405 SEMI-RIGID CABLE

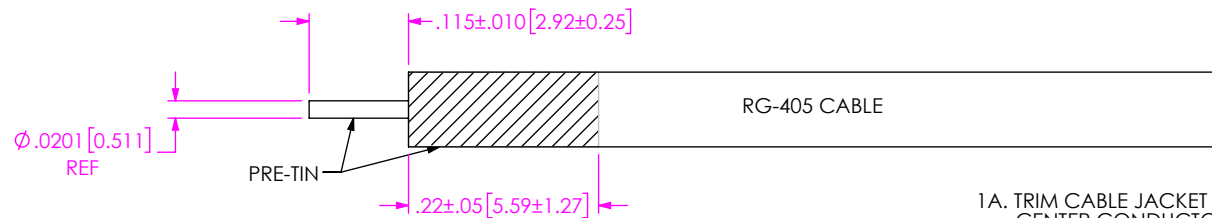
FINISH
-EE: 50 μ " EXTRA HEAVY GOLD
CENTER CONTACT, 50 μ " EXTRA
HEAVY GOLD OUTER CONTACT



NOTES:

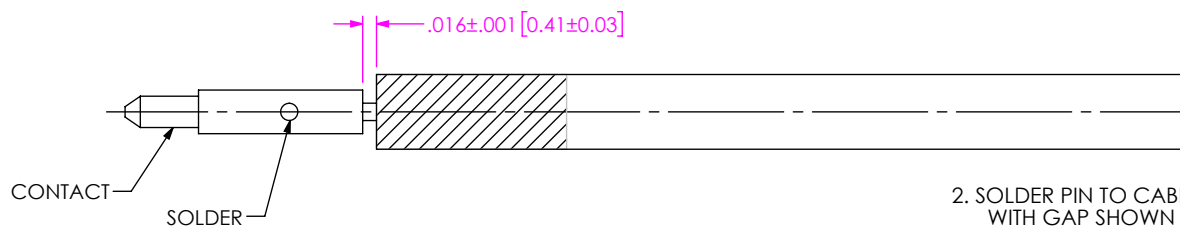
1. MATERIAL:
COUPLING NUT: STAINLESS STEEL
BODY, CONTACT, LOCK RING: BERYLLIUM COPPER
INSULATOR: PTFE
GASKET: SILICONE RUBBER
2. FINISH:
COUPLING NUT: PASSIVATED
BODY, CONTACT: 50 μ " MIN. GOLD OVER 50 μ " MIN. ELECTROLYTIC NICKEL PLATE
3. PCI P/N: 3150

UNLESS OTHERWISE SPECIFIED, DIMENSIONS ARE IN INCHES. TOLERANCES ARE: DECIMALS ANGLES .XX: ±.02[0.5] .XXX: ±.005[0.13] .XXXX: ±.0005[0.013]	<div>PROPRIETARY NOTE</div> <div>THIS DOCUMENT CONTAINS CONFIDENTIAL AND PROPRIETARY INFORMATION AND ALL DESIGN, MANUFACTURING, REPRODUCTION, USE, PATENT RIGHTS AND SALES RIGHTS ARE EXPRESSLY RESERVED BY SAMTEC, INC. THIS DOCUMENT SHALL NOT BE DISCLOSED, IN WHOLE OR PART, TO ANY UNAUTHORIZED PERSON OR ENTITY NOR REPRODUCED, TRANSFERRED OR INCORPORATED IN ANY OTHER PROJECT IN ANY MANNER WITHOUT THE EXPRESS WRITTEN CONSENT OF SAMTEC, INC.</div>	<div></div> <div>520 PARK EAST BLVD, NEW ALBANY, IN 47150 PHONE: 812-944-6733 FAX: 812-948-5047 e-Mail: info@SAMTEC.com code 55322</div>	
		DO NOT SCALE DRAWING SHEET SCALE: 4.5:1	
		DESCRIPTION: SMA PLUG DIRECT SOLDER FOR RG-405 CABLE. WRENCH FLATS	
		DWG. NO. PRF01-P-C-EE-405-SD	
		BY: SHERRY W 2/2/2019 SHEET 1 OF 2	



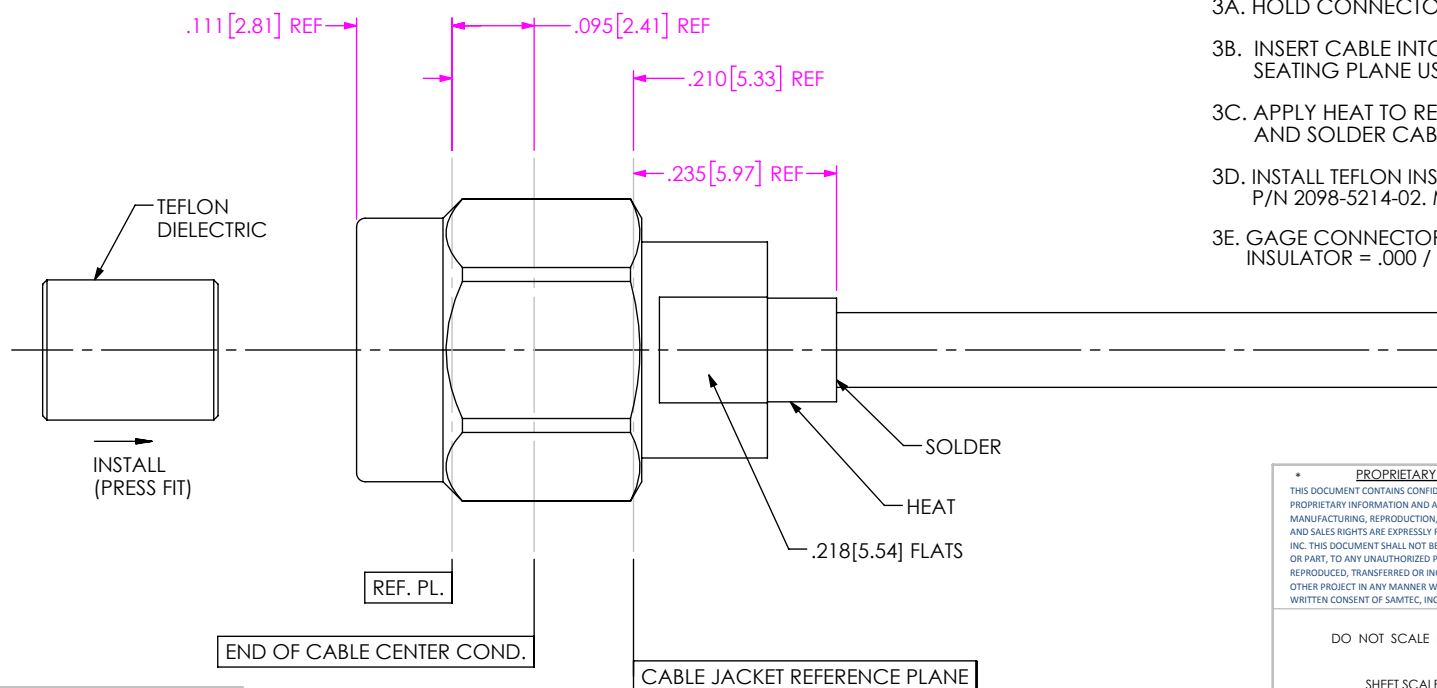
- 1A. TRIM CABLE JACKET & DIELECTRIC TO EXPOSE CENTER CONDUCTOR FOR LENGTH INDICATED.
- 1B. PRE-TIN CABLE CENTER CONDUCTOR AND OUTER JACKET OVER LENGTHS INDICATED.

IN-PROCESS VIEW 1



2. SOLDER PIN TO CABLE CENTER CONDUCTOR WITH GAP SHOWN USING SPACER SHIM.

IN-PROCESS VIEW 2



- 3A. HOLD CONNECTOR BODY IN MA/COM FIXTURE BASE P/N 2098-5206-54.
- 3B. INSERT CABLE INTO CONNECTOR BODY AND POSITION FLUSH WITH JACKET SEATING PLANE USING MA/COM LOCATOR TOOL P/N 2098-0307-02.
- 3C. APPLY HEAT TO REAR CONNECTOR BODY AND SOLDER CABLE JACK TO BODY WHERE INDICATED.
- 3D. INSTALL TEFLON INSULATOR INTO BODY USING MA/COM INSERTION TOOL P/N 2098-5214-02. MODEL T-4554.
- 3E. GAGE CONNECTOR INTERFACE. CONTACT = .001 / .007 SUB-FLUSH
INSULATOR = .000 / .006 SUB-FLUSH

PROPRIETARY NOTE
THIS DOCUMENT CONTAINS CONFIDENTIAL AND PROPRIETARY INFORMATION AND ALL DESIGN, MANUFACTURING, REPRODUCTION, USE, PATENT RIGHTS AND SALES RIGHTS ARE EXPRESSLY RESERVED BY SAMTEC, INC. THIS DOCUMENT SHALL NOT BE DISCLOSED, IN WHOLE OR PART, TO ANY UNAUTHORIZED PERSON OR ENTITY NOR REPRODUCED, TRANSFERRED OR INCORPORATED IN ANY OTHER PROJECT IN ANY MANNER WITHOUT THE EXPRESS WRITTEN CONSENT OF SAMTEC, INC.

DO NOT SCALE DRAWING

SHEET SCALE: 4.5:1

samtec

520 PARK EAST BLVD, NEW ALBANY, IN 47150
PHONE: 812-944-6733 FAX: 812-948-5047
e-Mail: info@SAMTEC.com code 55322

DESCRIPTION: SMA PLUG DIRECT SOLDER FOR RG-405 CABLE. WRENCH FLATS

DWG. NO. PRF01-P-C-EE-405-SD

BY: SHERRY W 2/2/2019

SHEET 2 OF 2

IN-PROCESS VIEW 3