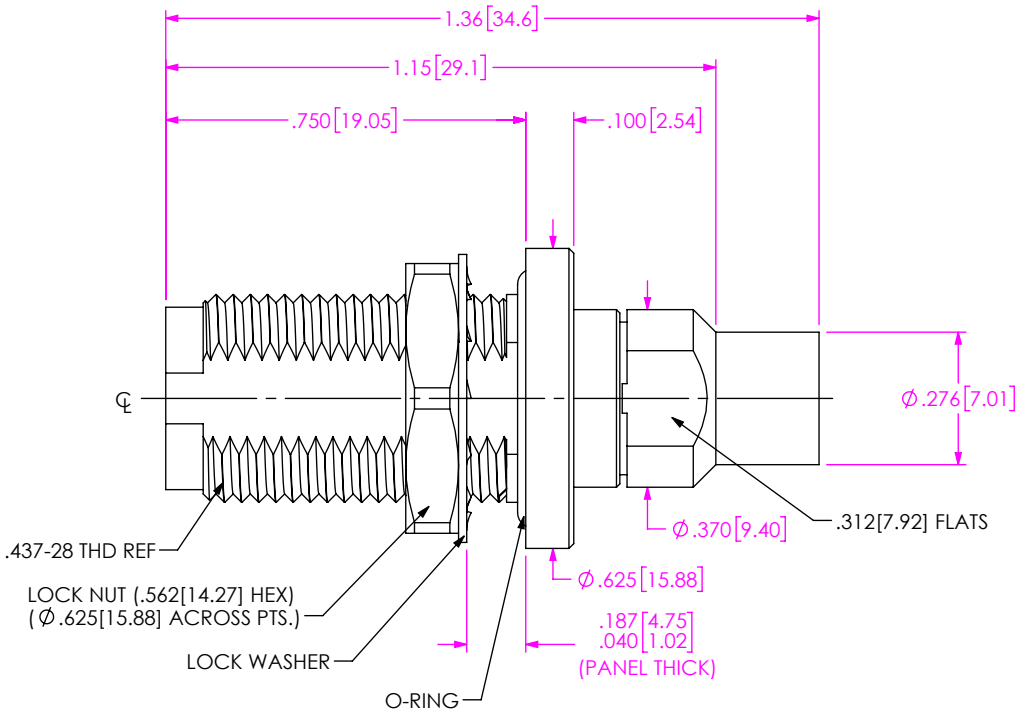


DO NOT
SCALE FROM
THIS PRINT

DESIGNED & DIMENSIONED
IN INCHES[MILLIMETERS]



PRF04-J-C-EP-190-BS

SERIES
-04: TNCA

GENDER
-J: JACK

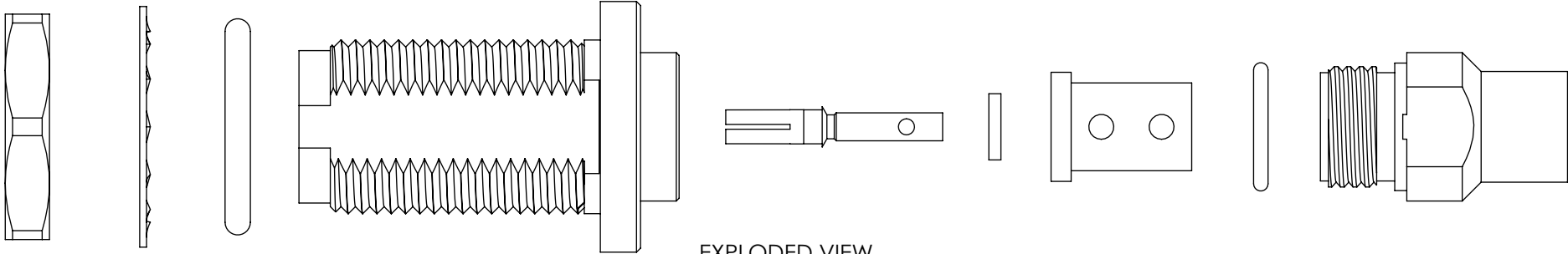
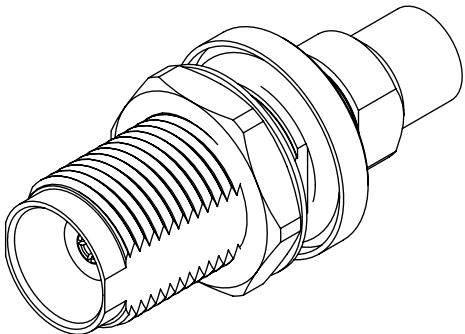
TYPE
-C: CABLE

PLATING
-EP: 50µ" EXTRA HEAVY GOLD
CENTER CONTACT, PASSIVATED
OUTER CONTACT

TERMINATION
-S: SOLDER CLAMP


ORIENTATION
-B: BULKHEAD

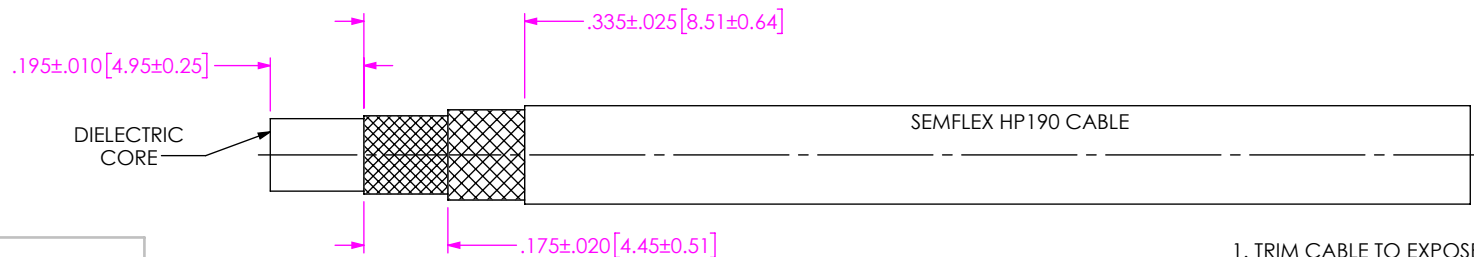
CABLE TYPE
-190: SEMFLEX HP190



EXPLODED VIEW
NOT TO SCALE
(FOR CLARITY ONLY)

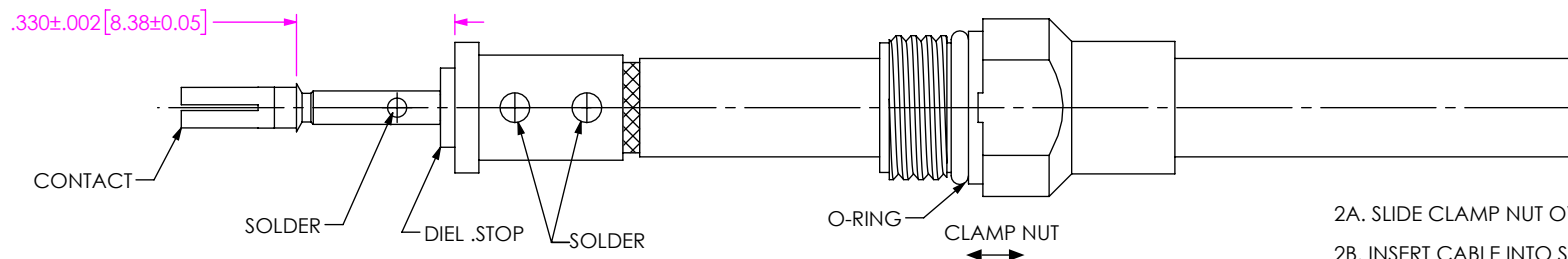
- NOTES:
1. MATERIAL:
BODY, CLAMP NUT, LOCK WASHER, JAM NUT, BUSHING: STAINLESS STEEL
CONTACT: BERYLLIUM COPPER
SOLDER FERRULE: BRASS ALLOY
INSULATOR: PTFE
BEAD: PTFE
O-RINGS: SILICONE RUBBER
2. FINISH:
BODY, CLAMP NUT, LOCK WASHER, JAM NUT, BUSHING: PASSIVATED
CONTACT, SOLDER FERRULE: 50µ" MIN. GOLD OVER 50µ" MIN. NICKEL PLATE
3. PCI P/N: 3305

UNLESS OTHERWISE SPECIFIED, DIMENSIONS ARE IN INCHES. TOLERANCES ARE: DECIMALS ANGLES .XX: ±.02[0.5] 1 ° .XXX: ±.005[0.13] .XXXX: ±.0005[0.013]	PROPRIETARY NOTE * THIS DOCUMENT CONTAINS CONFIDENTIAL AND PROPRIETARY INFORMATION AND ALL DESIGN, MANUFACTURING, REPRODUCTION, USE, PATENT RIGHTS AND SALES RIGHTS ARE EXPRESSLY RESERVED BY SAMTEC, INC. THIS DOCUMENT SHALL NOT BE DISCLOSED, IN WHOLE OR PART, TO ANY UNAUTHORIZED PERSON OR ENTITY NOR REPRODUCED, TRANSFERRED OR INCORPORATED IN ANY OTHER PROJECT IN ANY MANNER WITHOUT THE EXPRESS WRITTEN CONSENT OF SAMTEC, INC.	 520 PARK EAST BLVD, NEW ALBANY, IN 47150 PHONE: 812-944-6733 FAX: 812-948-5047 e-Mail: info@SAMTEC.com code 55322
DO NOT SCALE DRAWING	SHEET SCALE: 2.5:1	DESCRIPTION: TNCA BULKHEAD JACK. SOLDER CLAMP FOR SEMFLEX HP190 CABLE
		DWG. NO. PRF04-J-C-EP-190-BS
		BY: CHRISTIAN S. 05/10/2019 SHEET 1 OF 2



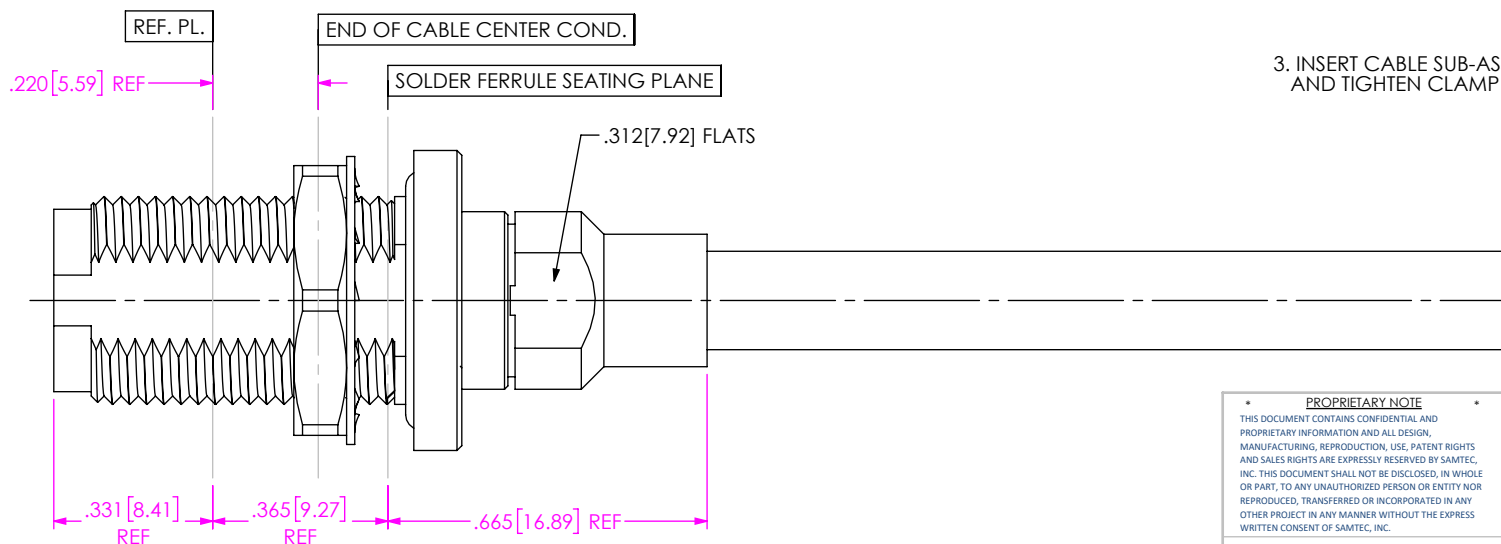
IN-PROCESS VIEW 1

1. TRIM CABLE TO EXPOSE DIELECTRIC CORE AND BRAIDS AS SHOWN



IN-PROCESS VIEW 2

- 2A. SLIDE CLAMP NUT OVER CABLE AS SHOWN.
 2B. INSERT CABLE INTO SOLDER FERRULE UNTIL INNER BRAID SEATS AND SOLDER TO FERRULE WHERE SHOWN.
 2C. TRIM CABLE DIELECTRIC CORE FLUSH WITH FACE OF SOLDER FERRULE.
 2D. SLIDE DIELECTRIC STOP ONTO CABLE CENTER CONDUCTOR AND SOLDER CONTACT FLUSH TO STOP TO DIMENSION SHOWN.



3. INSERT CABLE SUB-ASSEMBLY INTO CONNECTOR UNTIL SEATED AND TIGHTEN CLAMP NUT TO 25-35 IN/LBS.

DISTANCE FROM END OF
CABLE CENTER COND. TO
REF. PL. IS .220(REF.)

PROPRIETARY NOTE
 THIS DOCUMENT CONTAINS CONFIDENTIAL AND
 PROPRIETARY INFORMATION AND ALL DESIGN,
 MANUFACTURING, REPRODUCTION, USE, PATENT RIGHTS
 AND SALES RIGHTS ARE EXPRESSLY RESERVED BY SAMTEC,
 INC. THIS DOCUMENT SHALL NOT BE DISCLOSED, IN WHOLE
 OR PART, TO ANY UNAUTHORIZED PERSON OR ENTITY NOR
 REPRODUCED, TRANSFERRED OR INCORPORATED IN ANY
 OTHER PROJECT IN ANY MANNER WITHOUT THE EXPRESS
 WRITTEN CONSENT OF SAMTEC, INC.

DO NOT SCALE DRAWING

SHEET SCALE: 2.5:1

samtec

520 PARK EAST BLVD, NEW ALBANY, IN 47150
 PHONE: 812-944-6733 FAX: 812-948-5047
 e-Mail: info@SAMTEC.com code 55322

DESCRIPTION: TNCA BULKHEAD JACK, SOLDER CLAMP
 FOR SEMIFLEX HP190 CABLE

DWG. NO. PRF04-J-C-EP-190-BS

BY: CHRISTIAN S. 05/10/2019 SHEET 2 OF 2

IN-PROCESS VIEW 3