

NOTES:

1. MATERIALS AND FINISHES:

- BODY - BRASS, NICKEL PLATING
- CONTACT - BRASS, GOLD PLATING
- INSULATORS - PTFE, NATURAL
- FERRULE - BRASS, NICKEL PLATING
- GASKET - SILICONE RUBBER, RED

2. ELECTRICAL:

- A. IMPEDANCE: 50 OHM
- B. FREQUENCY RANGE: DC-20 GHz
- C. VSWR (RETURN LOSS): 1.20 MAX (-20.83 dB MIN) DC - 6 GHz  
1.28 MAX (-18.22 dB MIN) 6 - 12 GHz

D. DIELECTRIC WITHSTANDING VOLTAGE: 1000 VRMS, MIN.

3. MECHANICAL:

- A. DURABILITY: 500 CYCLES, MIN.
- B. TEMPERATURE RANGE: -65°C TO +165°C

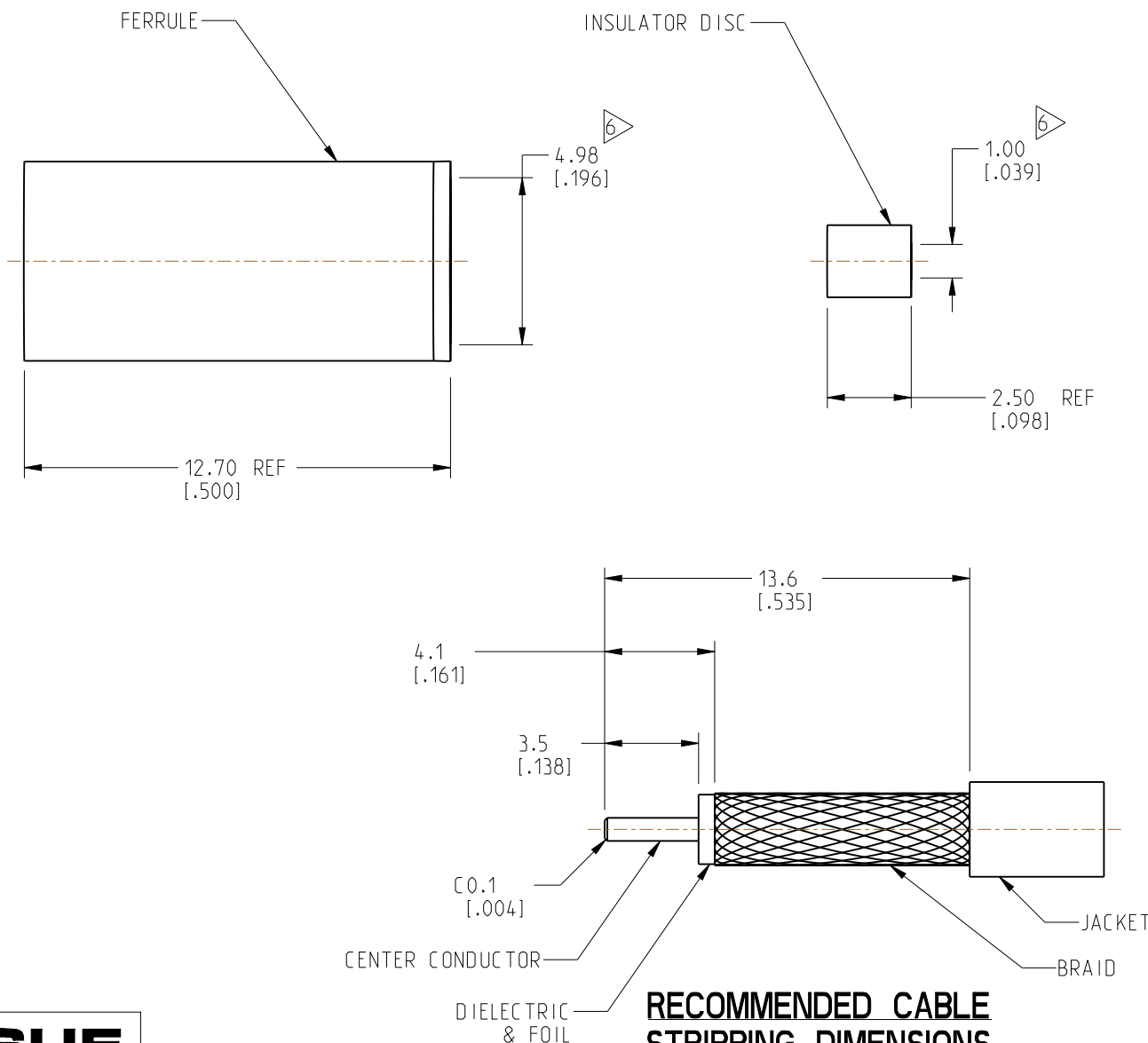
4. PACKAGING:

- A. QUANTITY: SINGLE PACK
- B. MARKING: PACKAGING TO BE MARKED  
"AMPHENOL RF, 901-10851, AND DATE CODE"

5. INSTRUCTIONS

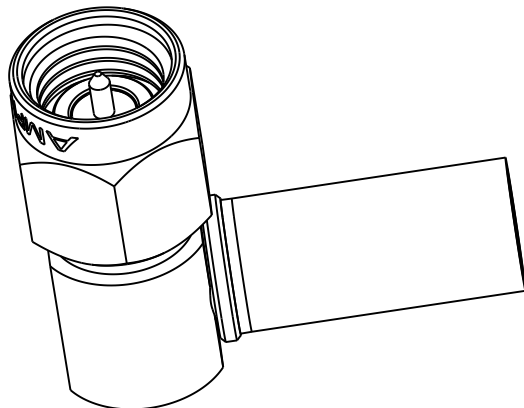
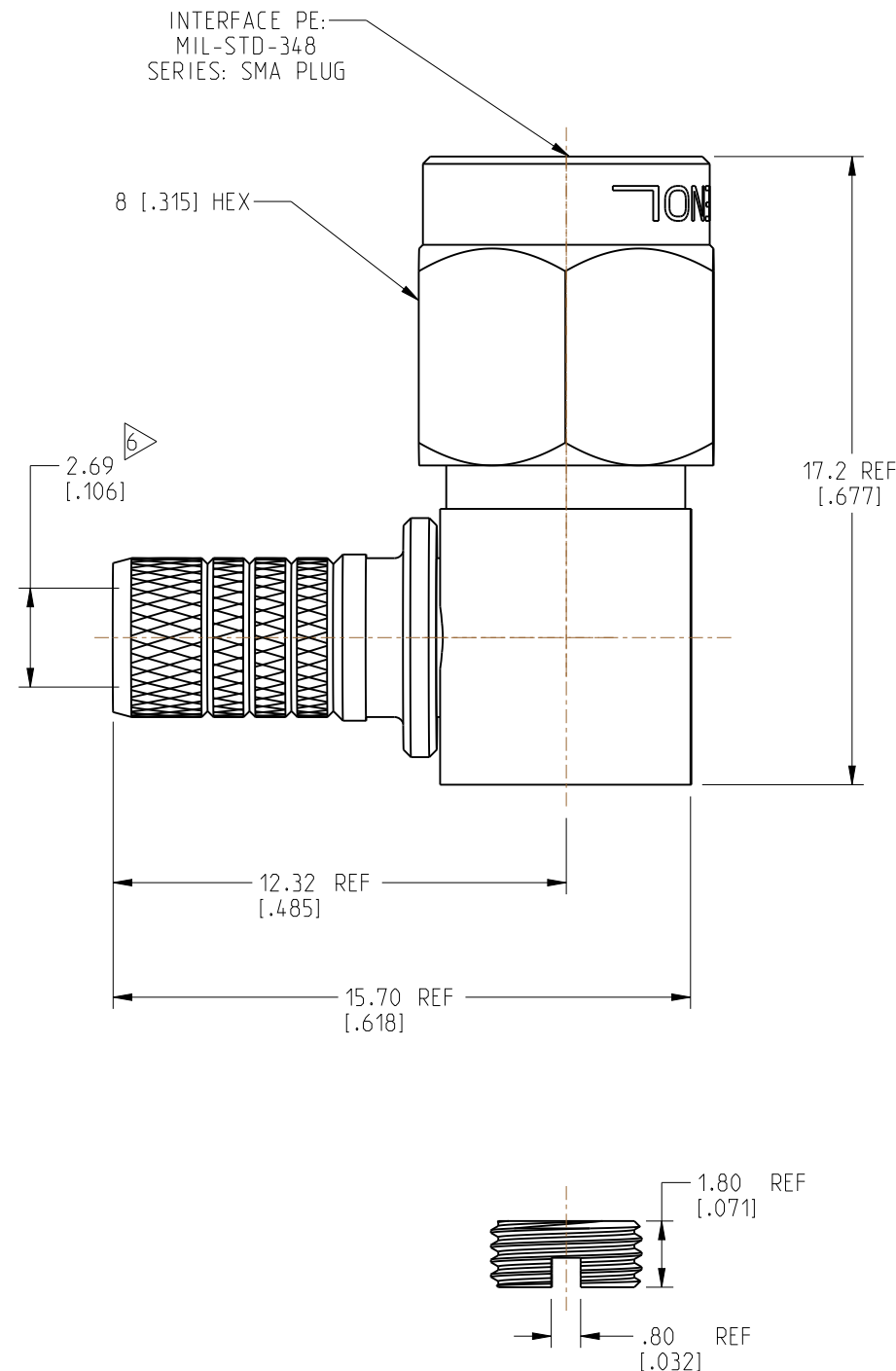
- A. TRIM CABLE AS SHOWN.
- B. SLIDE HEAT SHRINK TUBE, FERRULE & INSULATOR DISC ONTO CABLE.
- C. INSERT CABLE, UNTIL IT BOTTOMS, WITH FOIL ENTERING CONNECTOR AND BRAID OVER KNURL.
- D. CONTACT PIN TO SOLDER.
- E. HAND TIGHTEN CAP AFTER SOLDERING.
- F. CRIMPED FERRULE HEX CRIMP SIZE .213"
- G. APPLY HEAT SHRINK TUBE OVER FERRULE.

6. CABLE ENTRY DIMENSIONS



RECOMMENDED CABLE STRIPPING DIMENSIONS

REVISIONS				
REV	DESCRIPTION	DATE	ECN	BY
1	PRELIMINARY DESIGN	15-MAR-22	--	CC



SCALE 3.000

**PRELIMINARY ISSUE**

**CUSTOMER OUTLINE DRAWING**

ALL OTHER SHEETS ARE FOR INTERNAL USE ONLY

NOTICE: These drawings, specifications, or other data (1) are, and remain the property of Amphenol corp. (2) must be returned upon request; and (3) are confidential and not to be disclosed to any person other than those to whom they are given by Amphenol Corp. The furnishing of these drawings, specifications, or other data by Amphenol Corp., or to any other person to anyone for any purpose is not to be regarded by implication or otherwise in any manner licensing, granting rights to permitting such holder or any other person to manufacture, use or sell any product, process or design, patented or otherwise, that may in any way be related to or disclosed by said drawings, specifications, or other data.

UNLESS OTHERWISE SPECIFIED, DIMENSIONS ARE METRIC (INCHES) AND TOLERANCES ARE:  
 <0.5mm = ±0.05mm [ $\pm 0.020 = \pm 0.002$ ]  
 0.5 - 6mm = ±0.1mm [ $\pm 0.020 - 0.236 = \pm 0.004$ ]  
 >6.00 - 30mm = ±0.2mm [ $\pm 0.236 - 1.181 = \pm 0.008$ ]  
 >30.00 - 120mm = ±0.3mm [ $\pm 1.181 - 4.725 = \pm 0.012$ ]

MATERIAL: ENGR.1 C.CROTTY ENGR.2 DATE 15-MAR-22

TITLE: R/A SMA PLUG FOR RTK044 CABLE  
 SHEET NO. 2 OF 2 SCALE: 5.0:1.0

Amphenol RF  
 DRAWING NO. 901-10851  
 ITEM NO. 901-10851  
 PART NO. 901-10851  
 REV 1

THIRD ANGLE PROJ. REFERENCE 901-10737 EAR# 11040

ANGLES = ±1°

ENGR.1 C.CROTTY ENGR.2 DATE 15-MAR-22

SHEET NO. 2 OF 2 SCALE: 5.0:1.0

Amphenol RF DRAWING NO. 901-10851 ITEM NO. 901-10851 PART NO. 901-10851 REV 1