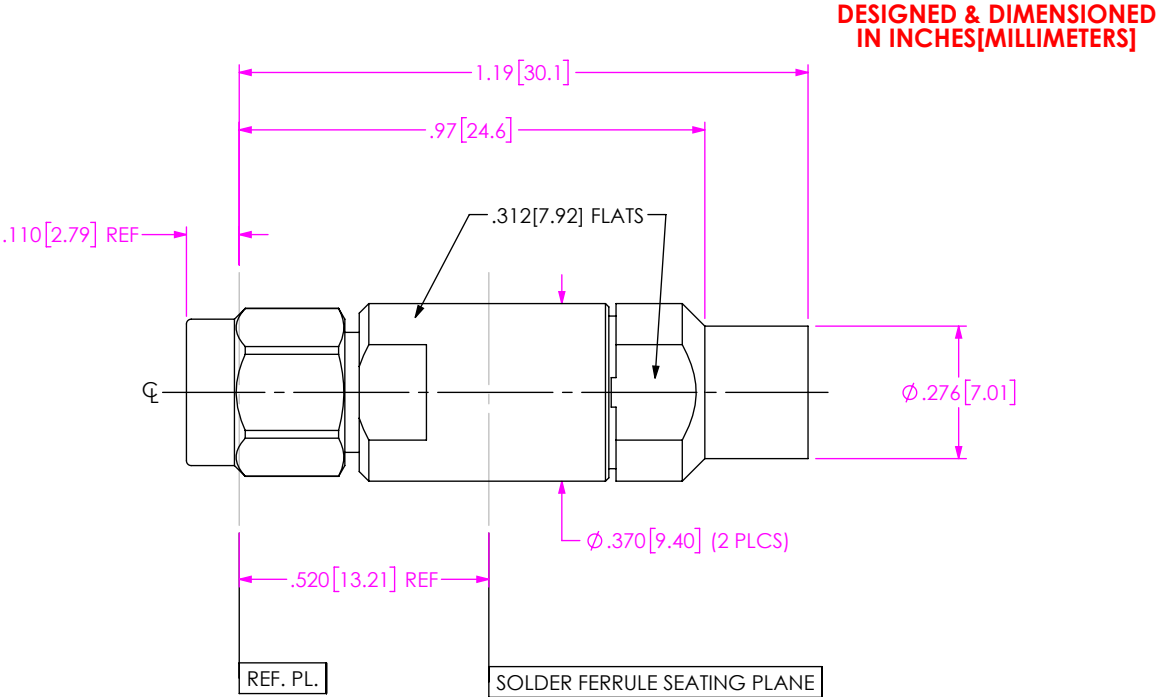


DO NOT
SCALE FROM
THIS PRINT



PRF01-P-C-EP-190-SS-1

SERIES
-01: SMA

GENDER
-P: PLUG

TYPE
-C: CABLE

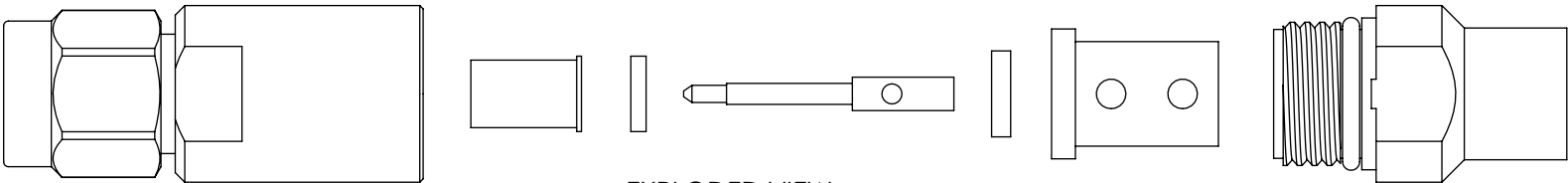
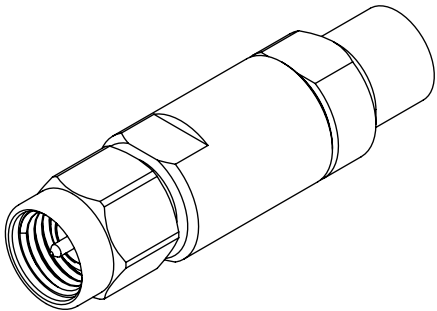
FINISH
-EP: 50 μ " EXTRA HEAVY GOLD
CENTER CONTACT, PASSIVATED
OUTER CONTACT

OPTION
-1

TERMINATION
S: SOLDER CLAMP

ORIENTATION
-S: STRAIGHT

CABLE TYPE
-190: SEMFLEX HP190



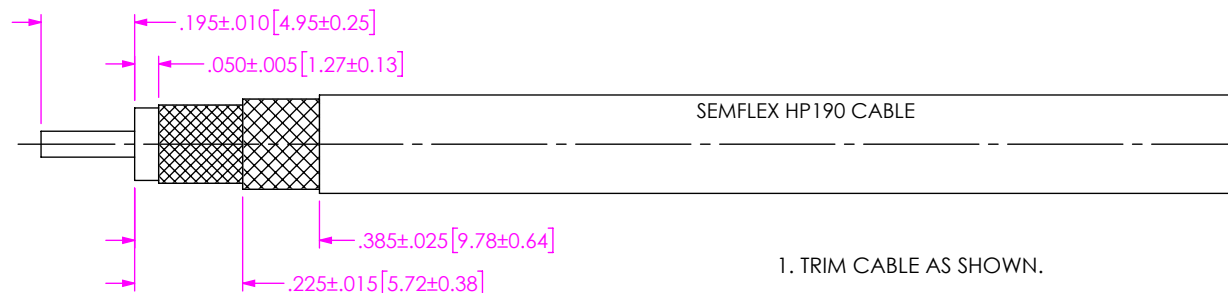
EXPLODED VIEW
NOT TO SCALE
(FOR CLARITY ONLY)

NOTES:

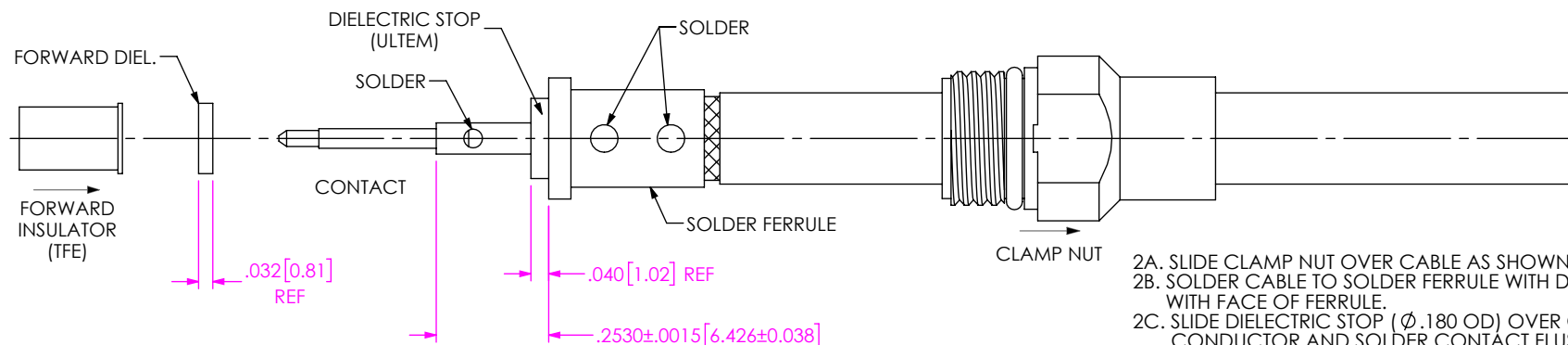
1. MATERIAL:
BODY, CLAMP NUT, COUPLING NUT: STAINLESS STEEL
CONTACT, LOCK RING: BERYLLIUM COPPER
SOLDER FERRULE: BRASS ALLOY
BEADS: PEI
INSULATOR: PTFE
O-RING, GASKET: SILICONE RUBBER
2. FINISH:
BODY, CLAMP NUT, COUPLING NUT: PASSIVATED
CONTACT, SOLDER FERRULE: 50 μ " MIN. GOLD OVER 50 μ " MIN. NICKEL PLATE
3. PCI P/N: 3407

F:\DWG\MISC\MKTG\PRF01-P-C-EP-190-SS-1-MKT.SLDDRW		
UNLESS OTHERWISE SPECIFIED, DIMENSIONS ARE IN INCHES. TOLERANCES ARE: DECIMALS ANGLES .XX: $\pm .02 [0.5]$ 1° .XXX: $\pm .005 [0.13]$.XXXX: $\pm .0005 [0.013]$	<p>PROPRIETARY NOTE</p> <p>THIS DOCUMENT CONTAINS CONFIDENTIAL AND PROPRIETARY INFORMATION AND ALL DESIGN, MANUFACTURING, REPRODUCTION, USE, PATENT RIGHTS AND SALES RIGHTS ARE EXPRESSLY RESERVED BY SAMTEC, INC. THIS DOCUMENT SHALL NOT BE DISCLOSED, IN WHOLE OR PART, TO ANY UNAUTHORIZED PERSON OR ENTITY NOR REPRODUCED, TRANSFERRED OR INCORPORATED IN ANY OTHER PROJECT IN ANY MANNER WITHOUT THE EXPRESS WRITTEN CONSENT OF SAMTEC, INC.</p>	
		520 PARK EAST BLVD, NEW ALBANY, IN 47150 PHONE: 812-944-6733 FAX: 812-948-5047 e-Mail: info@SAMTEC.com code 55322
MATERIAL: DO NOT SCALE DRAWING	SHEET SCALE: 2.5:1	DESCRIPTION: SMA PLUG, SOLDER CLAMP FOR SEMFLEX HP 190 CABLE
		DWG. NO. PRF01-P-C-EP-190-SS-1
		BY: CANDY W 05/14/2019 SHEET 1 OF 2

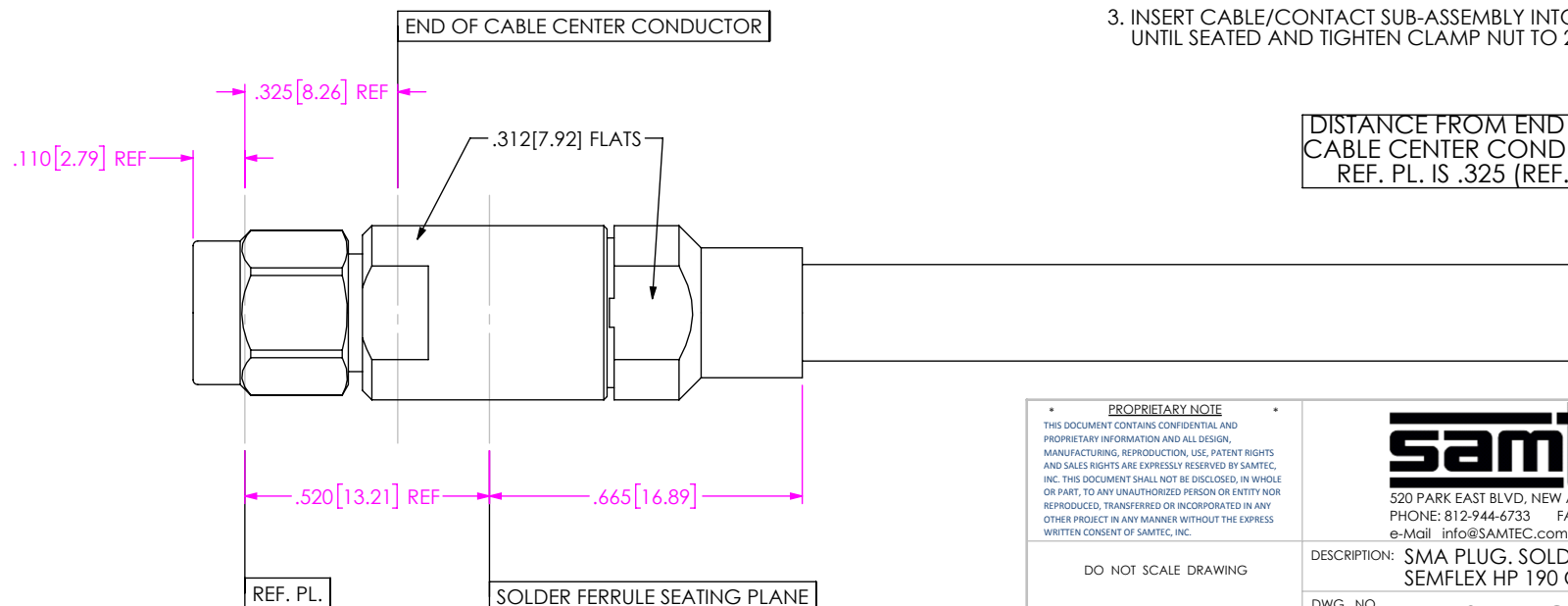
CABLE APPLICATION VIEWS



IN-PROCESS VIEW 1



IN-PROCESS VIEW 2



IN-PROCESS VIEW 3

• PROPRIETARY NOTE •
THIS DOCUMENT CONTAINS CONFIDENTIAL AND PROPRIETARY INFORMATION AND ALL DESIGN, MANUFACTURING, REPRODUCTION, USE, PATENT RIGHTS AND SALES RIGHTS ARE EXPRESSLY RESERVED BY SAMTEC, INC. THIS DOCUMENT SHALL NOT BE DISCLOSED, IN WHOLE OR PART, TO ANY UNAUTHORIZED PERSON OR ENTITY NOR REPRODUCED, TRANSFERRED OR INCORPORATED IN ANY OTHER PROJECT IN ANY MANNER WITHOUT THE EXPRESS WRITTEN CONSENT OF SAMTEC, INC.

DO NOT SCALE DRAWING

SHEET SCALE: 2.5:1

samtec

520 PARK EAST BLVD, NEW ALBANY, IN 47150
PHONE: 812-944-6733 FAX: 812-948-5047
e-Mail: info@SAMTEC.com code 55322

DESCRIPTION: SMA PLUG, SOLDER CLAMP FOR SEMFLX HP 190 CABLE

DWG. NO. PRF01-P-C-EP-190-SS-1

BY: CANDY W 05/14/2019 SHEET 2 OF 2