

DO NOT  
SCALE FROM  
THIS PRINT

REF.  
PL.

**DESIGNED & DIMENSIONED  
IN INCHES[MILLIMETERS]**

PRF06-J-C-EP-142-BS

SERIES —  
-06: NTPE

GENDER  
-J: JACK

TYPE —  
-C: CABLE

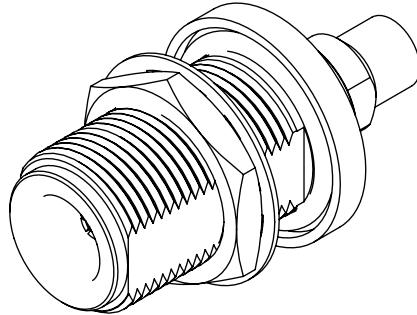
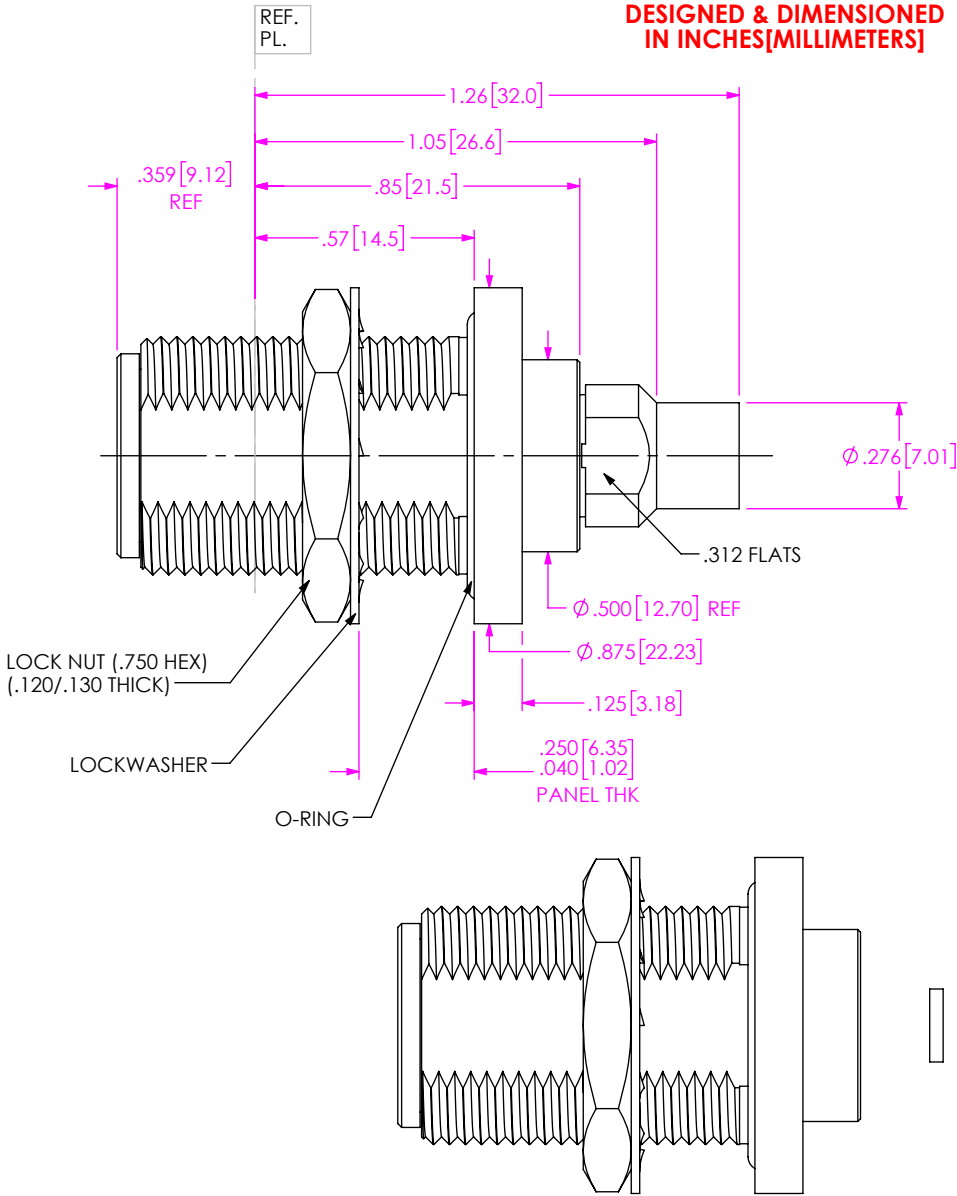
FINISH

-EP: 50μ" EXTRA HEAVY GOLD  
CENTER CONTACT, PASSIVATED  
OUTER CONTACT

TERMINATION  
-S: SOLDER CLAMP

ORIENTATION  
-B: BULKHEAD

CABLE TYPE  
42: HARBOUR LL142



EXPLODED VIEW  
NOT TO SCALE  
(FOR CLARITY ONLY)

NOTES:

1. MATERIAL:

BODY, BUSHING, CLAMP NUT, LOCK WASHER, JAM NUT: STAINLESS STEEL  
CONTACT: BERYLLIUM COPPER  
SOLDER FERRULE: BRASS ALLOY  
BEADS: PEI  
O-RINGS: SILICONE RUBBER

## 2. FINISH:

BODY, BUSHING, CLAMP NUT, LOCK WASHER, JAM NUT: PASSIVATED  
CONTACT, SOLDER FERRULE: 50µ" MIN. GOLD OVER 50µ" MIN. NICKEL PLATE

3. PCI P/N: 3282

F:\DWG\MISC\MKTG\PRF06-J-C-EP-142-BS-MKT.SLDDRW

UNLESS OTHERWISE SPECIFIED,  
DIMENSIONS ARE IN INCHES.  
TOLERANCES ARE:

DECIMALS	ANGLES
.XX: $\pm .01$ [0.3]	1°
.XXX: $\pm .005$ [0.13]	
.XXXX: $\pm .0005$ [0.013]	

**PROPRIETARY NOTE**

THIS DOCUMENT CONTAINS CONFIDENTIAL AND PROPRIETARY INFORMATION AND ALL DESIGN, MANUFACTURING, REPRODUCTION, USE, PATENT RIGHTS AND SALES RIGHTS ARE EXPRESSLY RESERVED BY SAMTEC, INC. THIS DOCUMENT SHALL NOT BE DISCLOSED, IN WHOLE OR PART, TO ANY UNAUTHORIZED PERSON OR ENTITY NOR REPRODUCED, TRANSFERRED OR INCORPORATED IN ANY OTHER PROJECT IN ANY MANNER WITHOUT THE EXPRESS WRITTEN CONSENT OF SAMTEC, INC.



520 PARK EAST BLVD, NEW ALBANY, IN 47150  
PHONE: 812-944-6733 FAX: 812-948-5047  
e-Mail [info@SAMTEC.com](mailto:info@SAMTEC.com) code 55322

DO NOT SCALE DRAWING

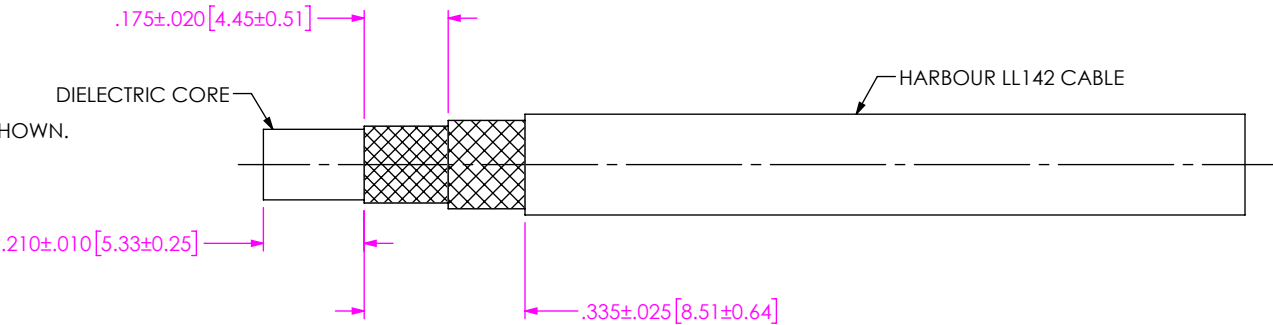
SHEET SCALE: 2:1

DESCRIPTION:	TYPE N BULKHEAD JACK. SOLDER CLAMP FOR HARBOUR LL142 CABLE
--------------	--

DWG. NO. PRF06-J-C-EP-142-BS

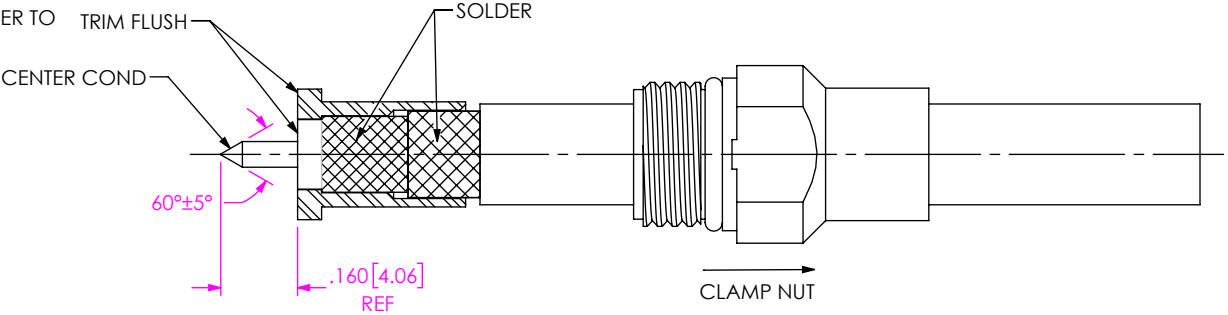
BY: EVE L	05/18/2019	SHEET 1 OF 3
-----------	------------	--------------

1A. TRIM CABLE TO EXPOSE DIELECTRIC CORE AND BRAIDS AS SHOWN.



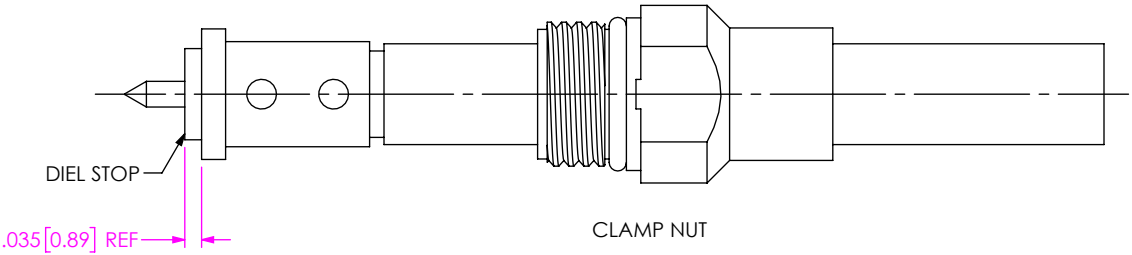
IN-PROCESS VIEW 1

2A. SLIDE CLAMP NUT OVER CABLE AS SHOWN.  
2B. INSERT CABLE INTO FERRULE UNTIL INNER BRAID SEATS AND SOLDER TO FERRULE WHERE SHOWN.  
2C. TRIM DIELECTRIC CORE FLUSH WITH FACE OF SOLDER FERRULE.  
2D. POINT CENTER CONDUCTOR AS SHOWN.



IN-PROCESS VIEW 2

3A. SLIDE DIELECTRIC STOP ONTO CABLE CENTER CONDUCTOR FLUSH WITH SOLDER FERRULE FACE.



IN-PROCESS VIEW 3

PROPRIETARY NOTE  
THIS DOCUMENT CONTAINS CONFIDENTIAL AND PROPRIETARY INFORMATION AND ALL DESIGN, MANUFACTURING, REPRODUCTION, USE, PATENT RIGHTS AND SALES RIGHTS ARE EXPRESSLY RESERVED BY SAMTEC, INC. THIS DOCUMENT SHALL NOT BE DISCLOSED, IN WHOLE OR PART, TO ANY UNAUTHORIZED PERSON OR ENTITY NOR REPRODUCED, TRANSFERRED OR INCORPORATED IN ANY OTHER PROJECT IN ANY MANNER WITHOUT THE EXPRESS WRITTEN CONSENT OF SAMTEC, INC.

DO NOT SCALE DRAWING

SHEET SCALE: 2.5:1

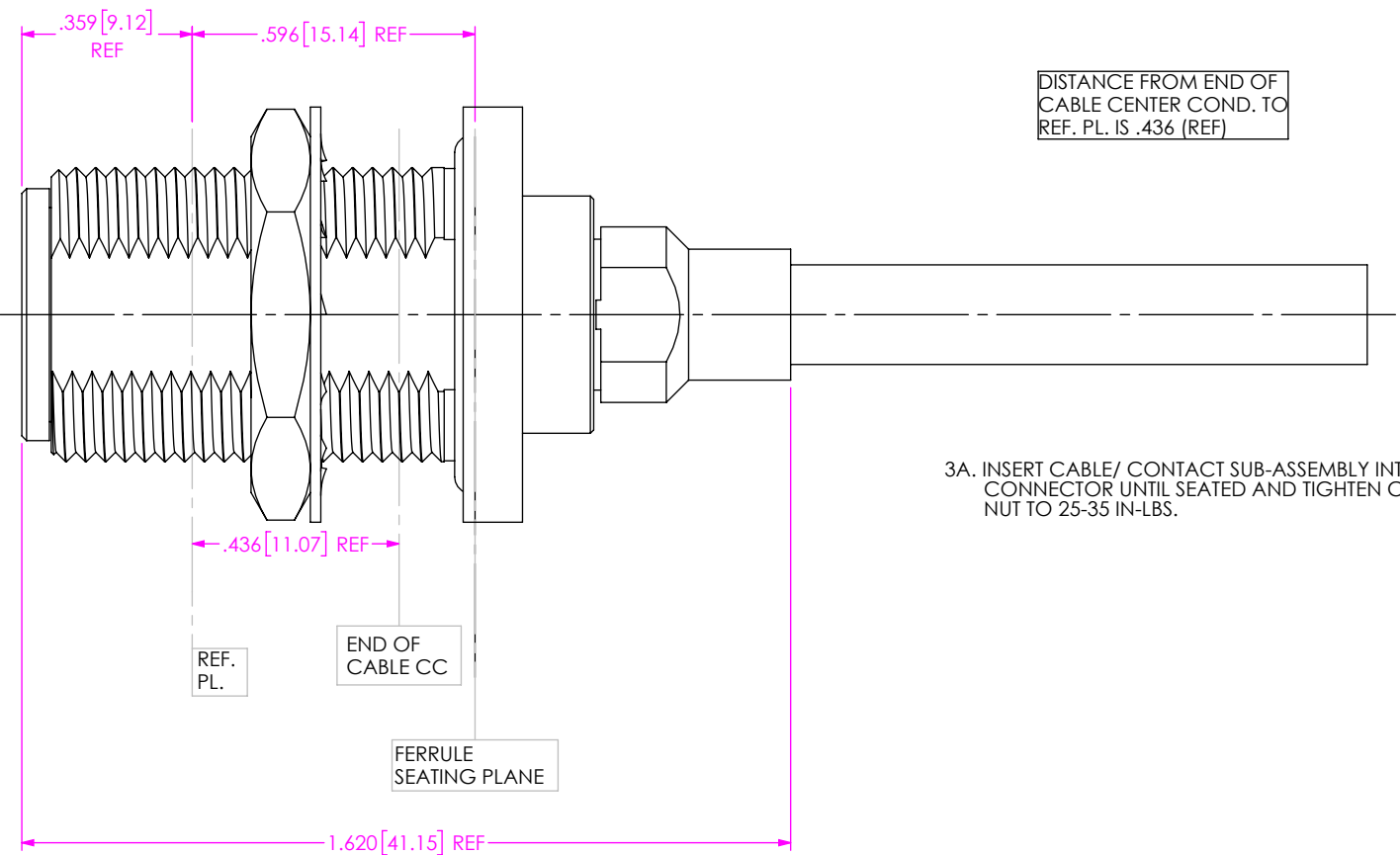
**samtec**

520 PARK EAST BLVD, NEW ALBANY, IN 47150  
PHONE: 812-944-6733 FAX: 812-948-5047  
e-Mail: info@SAMTEC.com code 55322

DESCRIPTION: TYPE N BULKHEAD JACK, SOLDER CLAMP FOR HARBOUR LL142 CABLE


DWG. NO. PRF06-J-C-EP-142-BS

BY: EVE L 05/18/2019 SHEET 2 OF 3



3A. INSERT CABLE/ CONTACT SUB-ASSEMBLY INTO CONNECTOR UNTIL SEATED AND TIGHTEN CLAMP NUT TO 25-35 IN-LBS.

IN-PROCESS VIEW 4

<p>• PROPRIETARY NOTE •</p> <p>THIS DOCUMENT CONTAINS CONFIDENTIAL AND PROPRIETARY INFORMATION AND ALL DESIGN, MANUFACTURING, REPRODUCTION, USE, PATENT RIGHTS AND SALES RIGHTS ARE EXPRESSLY RESERVED BY SAMTEC, INC. THIS DOCUMENT SHALL NOT BE DISCLOSED, IN WHOLE OR PART, TO ANY UNAUTHORIZED PERSON OR ENTITY NOR REPRODUCED, TRANSFERRED OR INCORPORATED IN ANY OTHER PROJECT IN ANY MANNER WITHOUT THE EXPRESS WRITTEN CONSENT OF SAMTEC, INC.</p>	 <p>520 PARK EAST BLVD, NEW ALBANY, IN 47150 PHONE: 812-944-6733 FAX: 812-948-5047 e-Mail info@SAMTEC.com code 55322</p>	
	DESCRIPTION: TYPE N BULKHEAD JACK. SOLDER CLAMP FOR HARBOUR LL142 CABLE	
	DWG. NO.	PRF06-J-C-EP-142-BS
DO NOT SCALE DRAWING	BY: EVE L	05/18/2019
SHEET SCALE: 2.5:1	SHEET 3 OF 3	