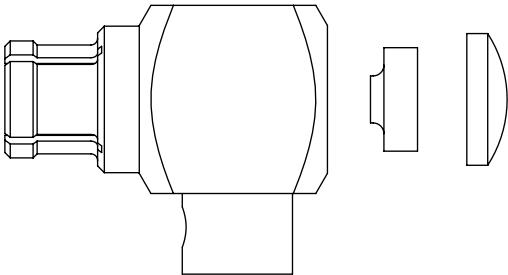
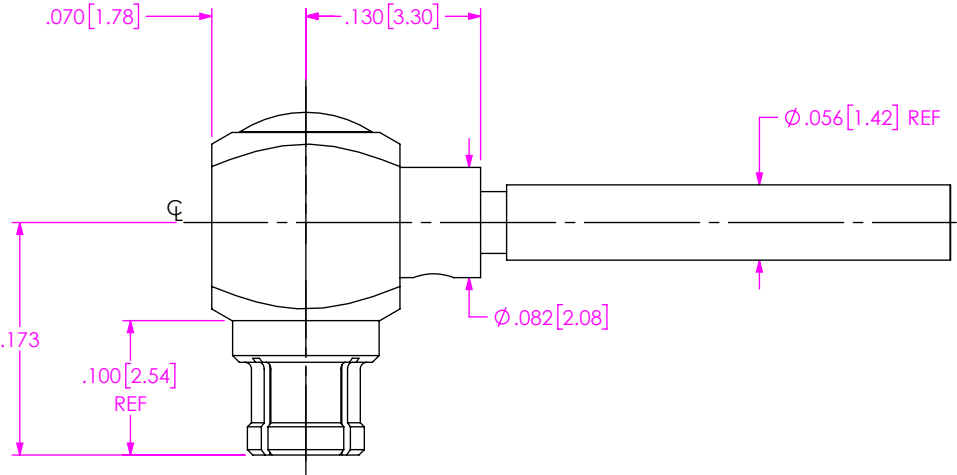


DESIGNED & DIMENSIONED  
IN INCHES[MILLIMETERS]

DO NOT  
SCALE FROM  
THIS PRINT



EXPLODED VIEW  
NOT TO SCALE  
(FOR CLARITY ONLY)

PRFM0-J-C-EE-047A-RD

SERIES  
-M0: SMPM

GENDER  
-J: JACKET

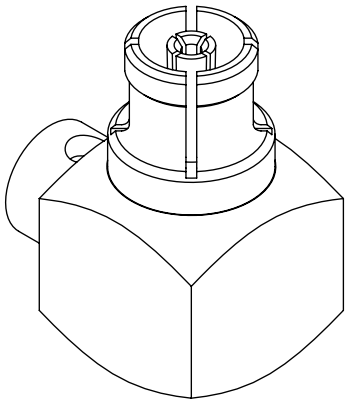
COMPONENT  
-C: CONTACT

TERMINATION  
D: DIRECT SOLDER

ORIENTATION  
RD: RIGHT ANGLE

CABLE TYPE  
-047A: TEMP FLEX 1000671047

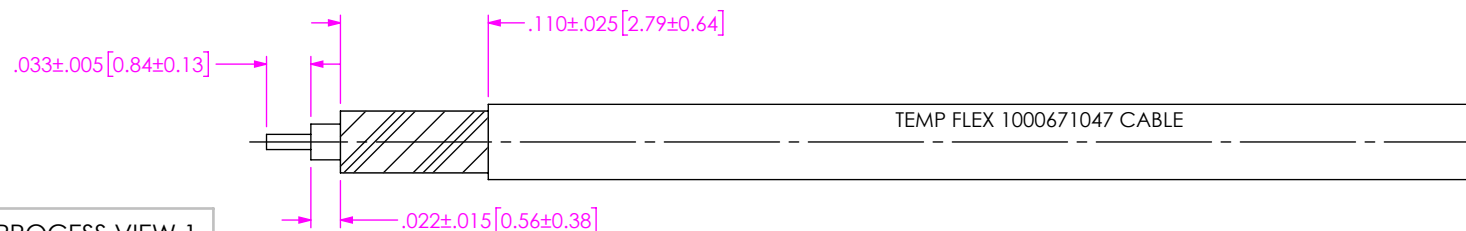
FINISH  
-EE: 50 EXTRA HEAVY GOLD  
CENTER CONTACT, 50 "  
HEAVY GOLD OUTER  
CONTACT



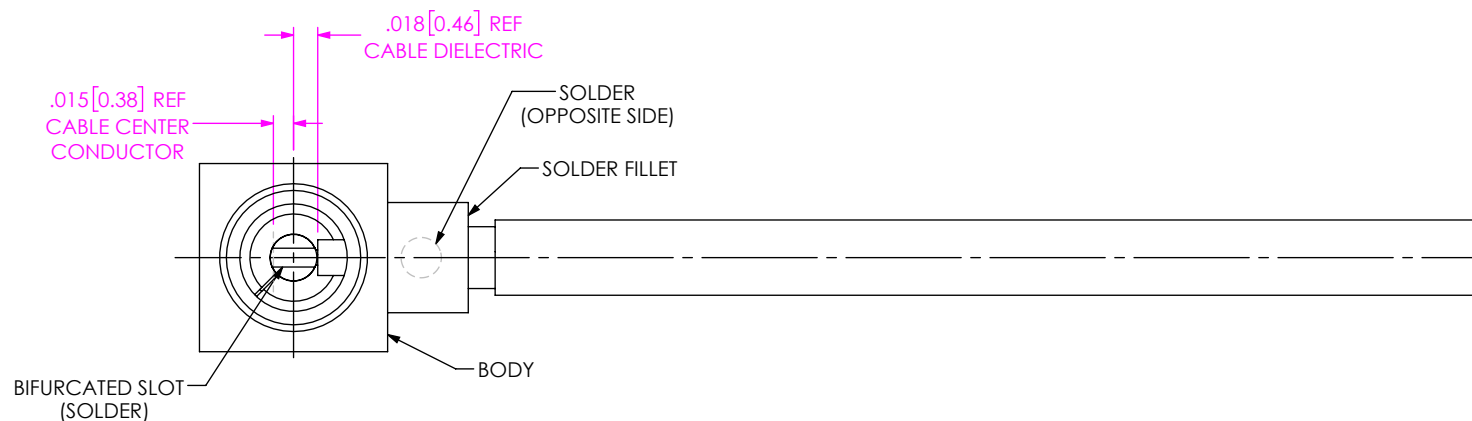
NOTES:

- 1. MATERIAL:  
BODY, CONTACT: BERYLLIUM COPPER  
END CAP: BRASS ALLOY  
INSULATOR: PTFE  
BEAD: PEI
- 2. FINISH:  
BODY, CONTACT, END CAP: 50µ" MIN. GOLD OVER 50µ" MIN. NICKEL PLATE
- 3. PCI P/N: 3816

UNLESS OTHERWISE SPECIFIED, DIMENSIONS ARE IN INCHES. TOLERANCES ARE:  DECIMALS                      ANGLES .XX: ±.01[0.3]                      1 ° .XXX: ±.005[0.13] .XXXX: ±.0005[0.013]	<div>PROPRIETARY NOTE</div> <div>THIS DOCUMENT CONTAINS CONFIDENTIAL AND PROPRIETARY INFORMATION AND ALL DESIGN, MANUFACTURING, REPRODUCTION, USE, PATENT RIGHTS AND SALES RIGHTS ARE EXPRESSLY RESERVED BY SAMTEC, INC. THIS DOCUMENT SHALL NOT BE DISCLOSED, IN WHOLE OR PART, TO ANY UNAUTHORIZED PERSON OR ENTITY NOR REPRODUCED, TRANSFERRED OR INCORPORATED IN ANY OTHER PROJECT IN ANY MANNER WITHOUT THE EXPRESS WRITTEN CONSENT OF SAMTEC, INC.</div>	<div><b>samtec</b></div> <div>520 PARK EAST BLVD, NEW ALBANY, IN 47150 PHONE: 812-944-6733    FAX: 812-948-5047 e-Mail: info@SAMTEC.com    code 55322</div>	
		DO NOT SCALE DRAWING                      SHEET SCALE: 7:1	
		DESCRIPTION: SMPM SOCKET. MITER RT. ANGLE. DIRECT SOLDER FOR TEMP FLEX 1000671047 CABLE	
		DWG. NO.                      PRFM0-J-C-EE-047A-RD	
		BY: JESUS M                      4/6/2019                      SHEET 1 OF 2	



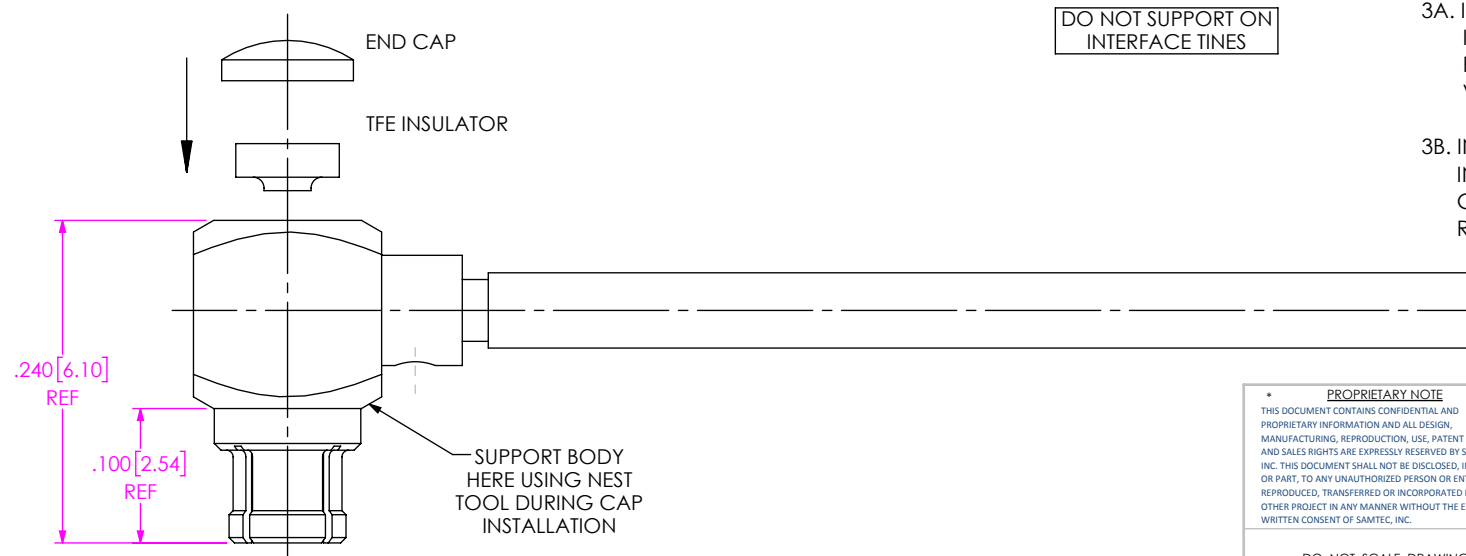
IN-PROCESS VIEW 1



IN-PROCESS VIEW 2

- 2A. INSERT CABLE INTO BODY UNTIL DIELECTRIC CORE STOPS AGAINST CONTACT. SOLDER CABLE BRAIDS TO BODY WHERE SHOWN.
- 2B. SOLDER CABLE CENTER CONDUCTOR TO CONTACT SLOT COMPLETELY FILLING SLOT BUT MINIMIZING EXCESS FLOW ONTO CONTACT OUTER SURFACE.

DO NOT CROWN SOLDER  
ON TOP OF CONTACT



IN-PROCESS VIEW 3

DO NOT SUPPORT ON  
INTERFACE TINES

- 3A. INSTALL TFE INSULATOR AND END CAP IN ORIENTATION SHOWN INTO BODY AND PRESS CAP FLUSH TO BODY USING A FLAT TOOL OR VICE WITH BODY NESTED IN PCI TOOL NO. 450318.
- 3B. INSPECT CONNECTOR CONTACT INTERFACE RECESSON USING AN APPROPRIATE GAGE. CONTACT TO BE .001/.004 SUB-FLUSH WITH REF. PLANE.

**PROPRIETARY NOTE**  
THIS DOCUMENT CONTAINS CONFIDENTIAL AND PROPRIETARY INFORMATION AND ALL DESIGN, MANUFACTURING, REPRODUCTION, USE, PATENT RIGHTS AND SALES RIGHTS ARE EXPRESSLY RESERVED BY SAMTEC, INC. THIS DOCUMENT SHALL NOT BE DISCLOSED, IN WHOLE OR PART, TO ANY UNAUTHORIZED PERSON OR ENTITY NOR REPRODUCED, TRANSFERRED OR INCORPORATED IN ANY OTHER PROJECT IN ANY MANNER WITHOUT THE EXPRESS WRITTEN CONSENT OF SAMTEC, INC.

DO NOT SCALE DRAWING

SHEET SCALE: 7:1

**samtec**

520 PARK EAST BLVD, NEW ALBANY, IN 47150  
PHONE: 812-944-6733 FAX: 812-948-5047  
e-Mail: info@SAMTEC.com code 55322

DESCRIPTION: SMPM SOCKET, MITER RT. ANGLE, DIRECT SOLDER FOR TEMP-FLEX 047SC-2901 CABLE

DWG. NO.

PRFM0-J-C-EE-047A-RD

BY: JESUS M

4/6/2019

SHEET 2 OF 2