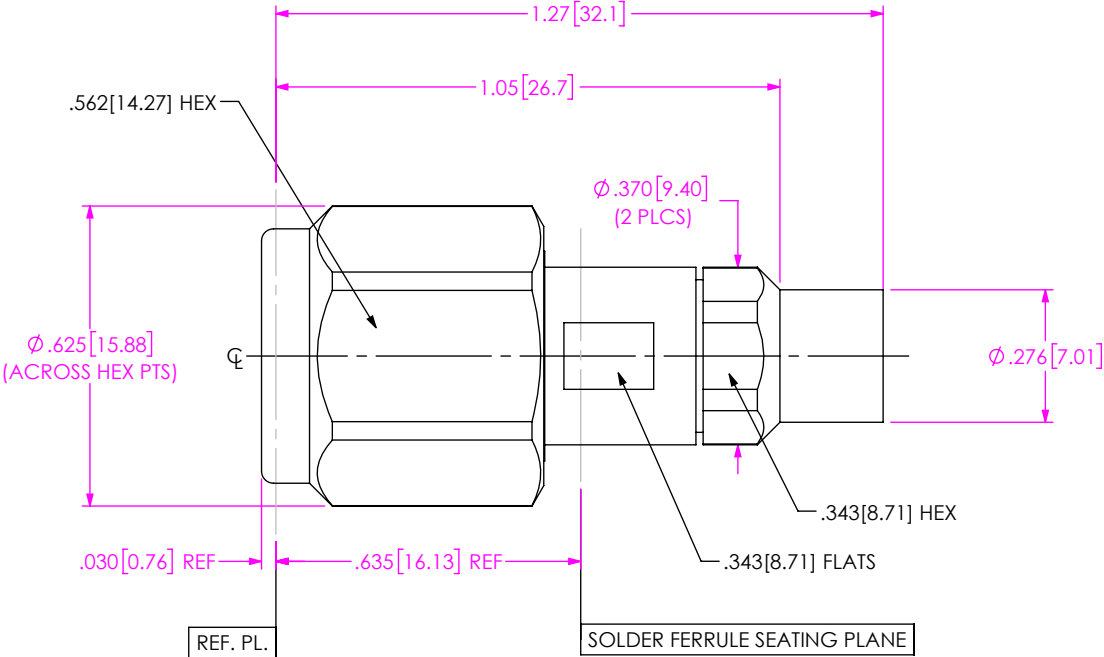


DO NOT
SCALE FROM
THIS PRINT



PRF04-P-C-EP-190-SS

SERIES
-04: TNCA

GENDER
-P: PLUG

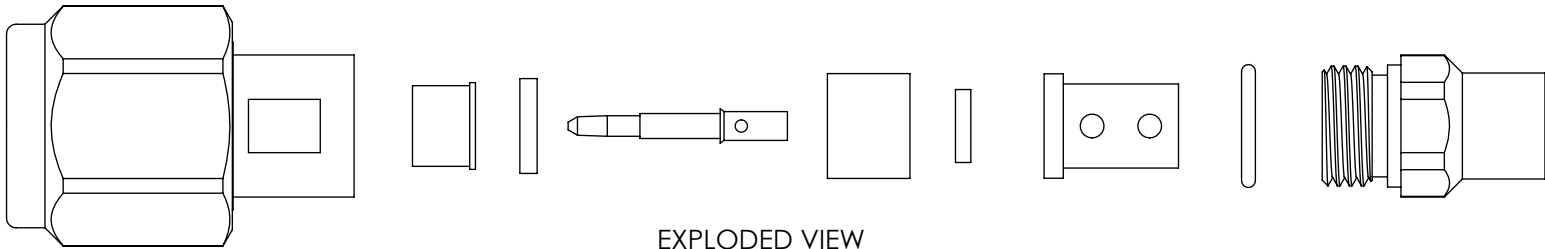
TYPE
-C: CABLE

FINISH
-EP: 50μ" EXTRA HEAVY GOLD
CENTER CONTACT, PASSIVATED
OUTER CONTACT

TERMINATION
-S: SOLDER CLAMP

ORIENTATION
-S: STRAIGHT


CABLE TYPE
-190: SEMFLEX HP190

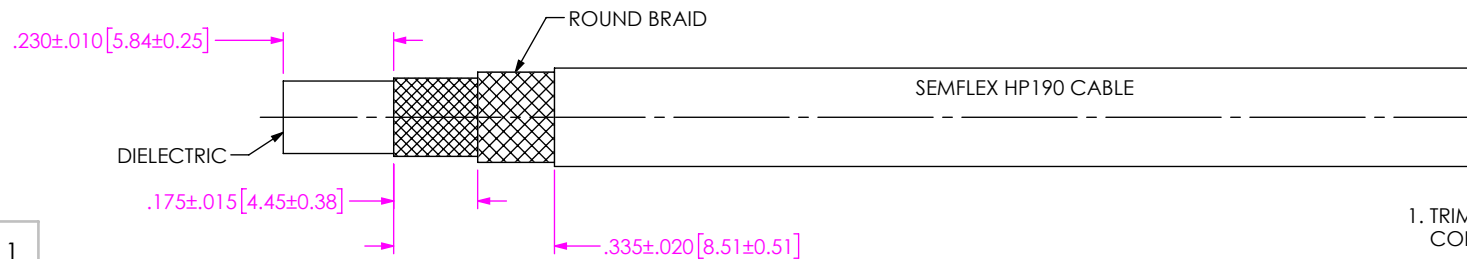


EXPLODED VIEW
NOT TO SCALE
(FOR CLARITY ONLY)

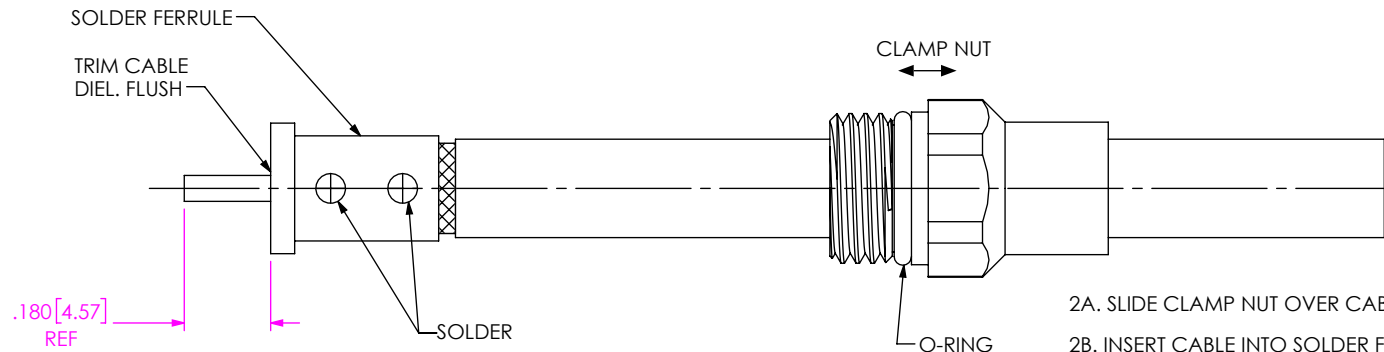
NOTES:

1. MATERIAL:
BODY, CLAMP NUT, BUSHING, COUPLING NUT: STAINLESS STEEL
CONTACT, LOCK RING: BERYLLIUM COPPER
SOLDER FERRULE: BRASS ALLOY
INSULATOR: PTFE
BEADS: PEI
O-RING, GASKET: SILICONE RUBBER
2. FINISH:
BODY, CLAMP NUT, BUSHING, COUPLING NUT: PASSIVATED
CONTACT, SOLDER FERRULE: 50μ" MIN. GOLD OVER 50μ" MIN. NICKEL PLATE
3. PCI P/N: 3303

UNLESS OTHERWISE SPECIFIED, DIMENSIONS ARE IN INCHES. TOLERANCES ARE: DECIMALS ANGLES .XX: ±.02[0.5] 1 ° .XXX: ±.005[0.13] .XXXX: ±.0005[0.013]	* PROPRIETARY NOTE * THIS DOCUMENT CONTAINS CONFIDENTIAL AND PROPRIETARY INFORMATION AND ALL DESIGN, MANUFACTURING, REPRODUCTION, USE, PATENT RIGHTS AND SALES RIGHTS ARE EXPRESSLY RESERVED BY SAMTEC, INC. THIS DOCUMENT SHALL NOT BE DISCLOSED, IN WHOLE OR PART, TO ANY UNAUTHORIZED PERSON OR ENTITY NOR REPRODUCED, TRANSFERRED OR INCORPORATED IN ANY OTHER PROJECT IN ANY MANNER WITHOUT THE EXPRESS WRITTEN CONSENT OF SAMTEC, INC.	 520 PARK EAST BLVD, NEW ALBANY, IN 47150 PHONE: 812-944-6733 FAX: 812-948-5047 e-Mail info@SAMTEC.com code 55322	
		DO NOT SCALE DRAWING SHEET SCALE: 2.5:1	
		DESCRIPTION: TNCA PLUG. SOLDER CLAMP FOR SEMFLEX HP190 CABLE	
		DWG. NO. PRF04-P-C-EP-190-SS	
		BY: CHRISTIAN S. 05/07/2019 SHEET 1 OF 3	



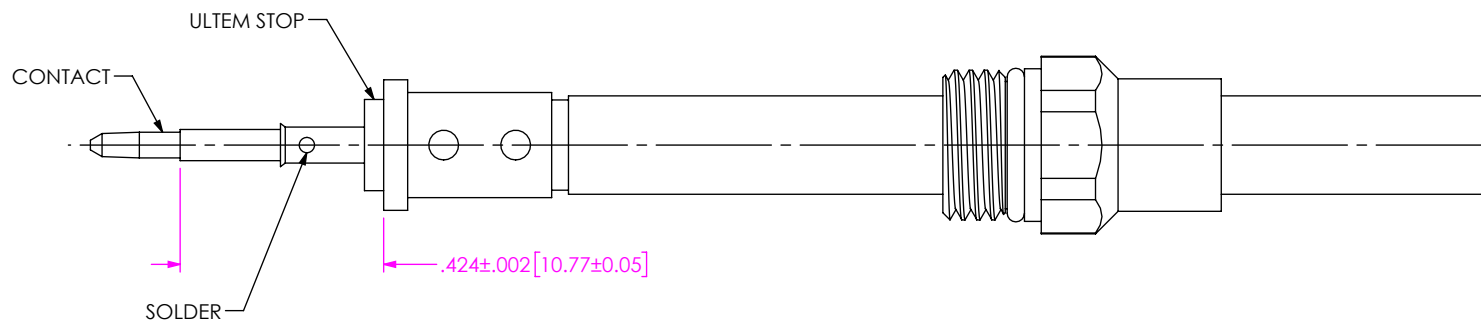
1. TRIM CABLE TO EXPOSE DIELECTRIC CORE AND BRAID AS SHOWN.



2A. SLIDE CLAMP NUT OVER CABLE AS SHOWN.

2B. INSERT CABLE INTO SOLDER FERRULE UNTIL FWD. BRAID SEATS THEN SOLDER BOTH CABLE BRAIDS WHERE SHOWN.

2C. TRIM CABLE DIELECTRIC FLUSH TO SOLDER FERRULE.



3A. SLIDE ULTEM DIELECTRIC STOP OVER CABLE CENTER CONDUCTOR AGAINST SOLDER FERRULE AS SHOWN.

3B. SOLDER CONTACT FLUSH AGAINST STOP TO DIMENSION SHOWN.

PROPRIETARY NOTE
THIS DOCUMENT CONTAINS CONFIDENTIAL AND PROPRIETARY INFORMATION AND ALL DESIGN, MANUFACTURING, REPRODUCTION, USE, PATENT RIGHTS AND SALES RIGHTS ARE EXPRESSLY RESERVED BY SAMTEC, INC. THIS DOCUMENT SHALL NOT BE DISCLOSED, IN WHOLE OR PART, TO ANY UNAUTHORIZED PERSON OR ENTITY NOR REPRODUCED, TRANSFERRED OR INCORPORATED IN ANY OTHER PROJECT IN ANY MANNER WITHOUT THE EXPRESS WRITTEN CONSENT OF SAMTEC, INC.

DO NOT SCALE DRAWING

SHEET SCALE: 2.5:1

samtec

520 PARK EAST BLVD, NEW ALBANY, IN 47150
PHONE: 812-944-6733 FAX: 812-948-5047
e-Mail: info@SAMTEC.com code 55322

DESCRIPTION: TNCA PLUG, SOLDER CLAMP FOR SEMFLEX HP190 CABLE

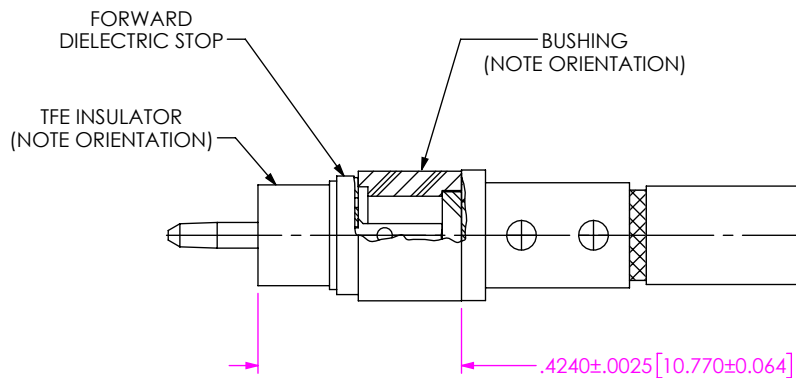
DWG. NO. PRF04-P-C-EP-190-SS

BY: CHRISTIAN S05/07/2019 SHEET 2 OF 3

IN-PROCESS VIEW 1

IN-PROCESS VIEW 2

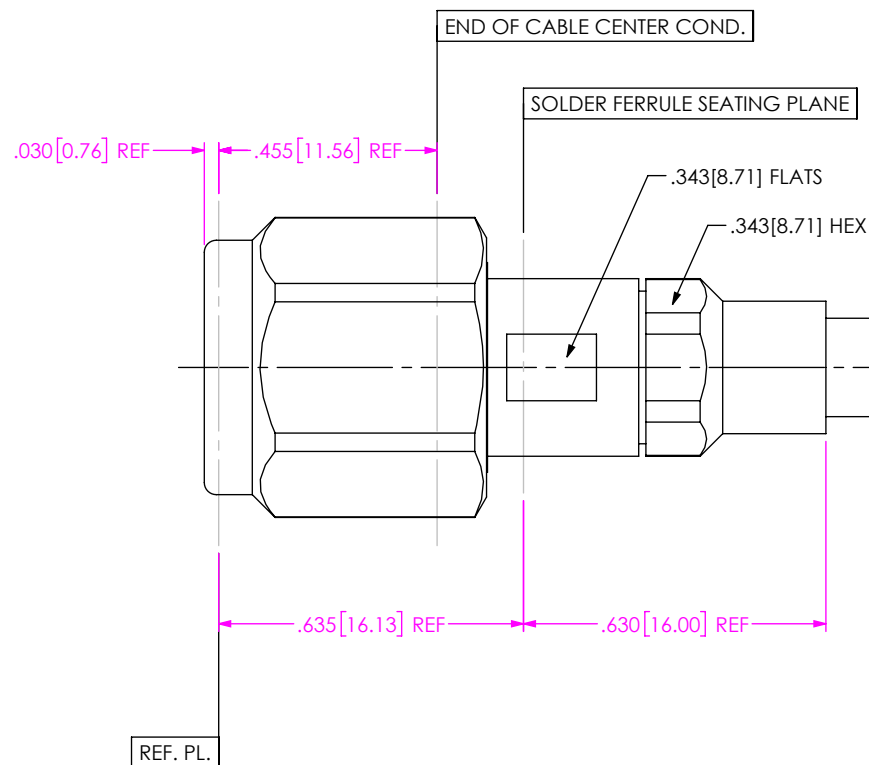
IN-PROCESS VIEW 3



*****NOTE*****
BUSHING WILL NOT SEAT
AGAINST SOLDER FERRULE IF
ORIENTATION IS REVERSED.

4. SLIDE BUSHING, FORWARD ULTEM STOP & FORWARD TEFLON INSULATOR OVER CONTACT AS SHOWN. (NOTE: ORIENT BUSHING WITH DEEPER SMALLER DIAMETER C'BORE TOWARD SOLDER FERRULE. ORIENT FORWARD TFE INSULATOR WITH SHOULDER TOWARD DIELECTRIC STOP).

IN-PROCESS VIEW 4



5. INSERT CABLE/CONTACT SUB-ASSEMBLY INTO CONNECTOR UNTIL SEATED AND TIGHTEN CLAMP NUT TO 35-45 IN/LBS

IN-PROCESS VIEW 5

• PROPRIETARY NOTE •
THIS DOCUMENT CONTAINS CONFIDENTIAL AND PROPRIETARY INFORMATION AND ALL DESIGN, MANUFACTURING, REPRODUCTION, USE, PATENT RIGHTS AND SALES RIGHTS ARE EXPRESSLY RESERVED BY SAMTEC, INC. THIS DOCUMENT SHALL NOT BE DISCLOSED, IN WHOLE OR PART, TO ANY UNAUTHORIZED PERSON OR ENTITY NOR REPRODUCED, TRANSFERRED OR INCORPORATED IN ANY OTHER PROJECT IN ANY MANNER WITHOUT THE EXPRESS WRITTEN CONSENT OF SAMTEC, INC.

DO NOT SCALE DRAWING

SHEET SCALE: 2.5:1

samtec

520 PARK EAST BLVD, NEW ALBANY, IN 47150
PHONE: 812-944-6733 FAX: 812-948-5047
e-Mail: info@SAMTEC.com code 55322

DESCRIPTION: TNCA PLUG, SOLDER CLAMP FOR SEMIFLEX HP190 CABLE

DWG. NO.

PRF04-P-C-EP-190-SS

BY: CHRISTIAN S. 05/07/2019 SHEET 3 OF 3