

DO NOT
SCALE FROM
THIS PRINT

DESIGNED & DIMENSIONED
IN INCHES[MILLIMETERS]

PRF18-P-C-EP-086E-SS

SERIES
-18: 1.85mm

GENDER
-P: PLUG

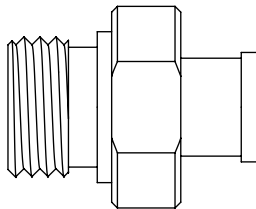
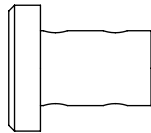
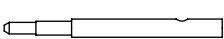
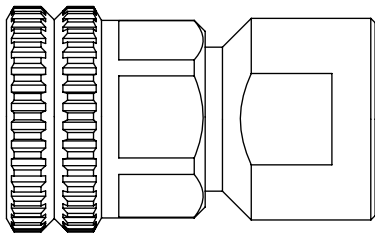
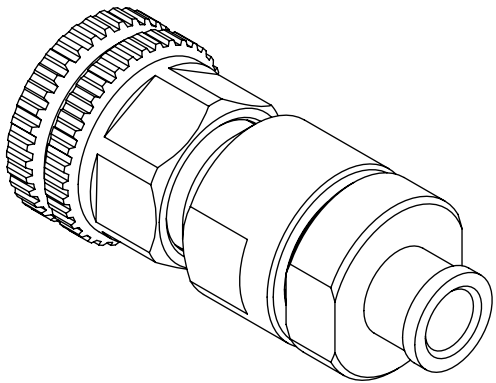
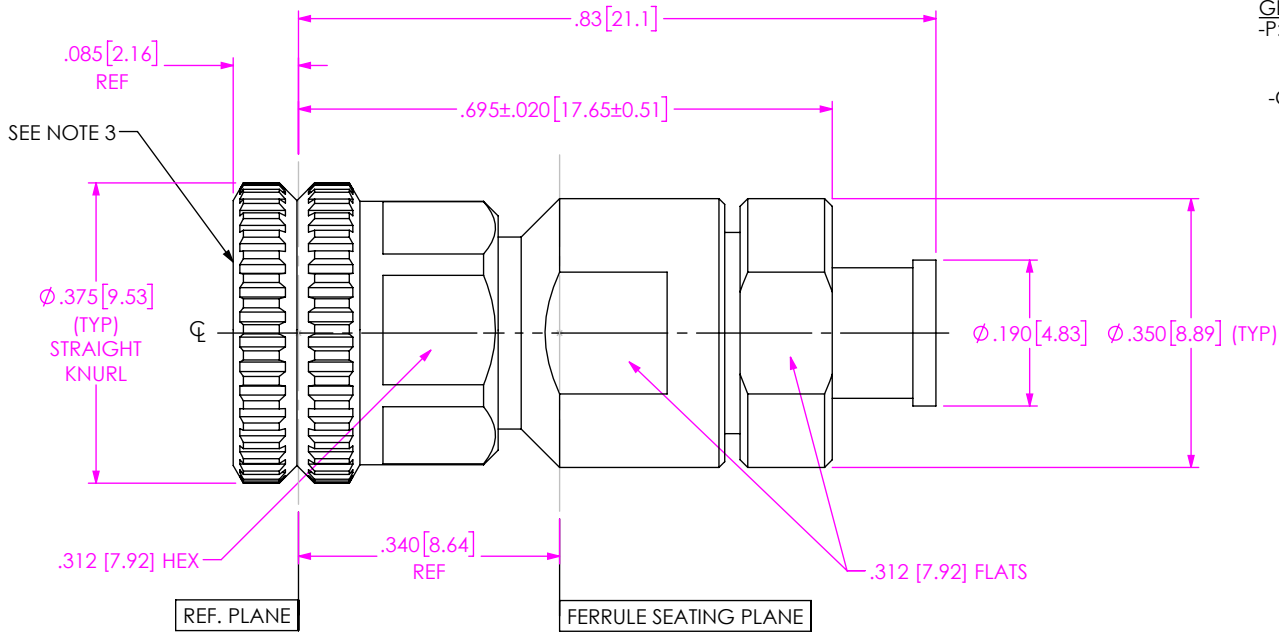
TYPE
-C: CABLE

TERMINATION
-S: SOLDER CLAMP

ORIENTATION
-S: STRAIGHT

CABLE TYPE
-086E: DYNAWAVE DF165

FINISH
-EP: 50µ" EXTRA HEAVY GOLD
CENTER CONTACT, PASSIVATED
OUTER CONTACT



NOTES:

EXPLODED VIEW
NOT TO SCALE
(FOR CLARITY ONLY)

1. MATERIAL:
BODY, COUPLING NUT & CLAMP NUT: STAINLESS STEEL.
CONTACT: BeCu C17300.
LOCK RING: BeCu C17200.
GASKET & O-RING: SILICONE RUBBER.
INSULATOR: TEFLON FLUOROCARBON.
DIELECTRIC STOP: ULTEM 1000.
SOLDER FERRULE: BRASS ALLOY 360.
2. FINISH:
BODY, COUPLING NUT & CLAMP NUT: PASSIVATED.
SOLDER FERRULE, CONTACT: GOLD OVER NICKEL PLATE,
50 µ" MIN GOLD OVER 50 µ" MIN NICKEL.
3. INTERFACE PER PCI-1.85mm-PIN.
4. PCI P/N: 4027.

UNLESS OTHERWISE SPECIFIED,
DIMENSIONS ARE IN INCHES.
TOLERANCES ARE:
DECIMALS ANGLES
.XX: ±.01 [0.3]
.XXX: ±.005 [0.13]
.XXXX: ±.0005 [0.013]

PROPRIETARY NOTE
THIS DOCUMENT CONTAINS CONFIDENTIAL AND
PROPRIETARY INFORMATION AND ALL DESIGN,
MANUFACTURING, REPRODUCTION, USE, PATENT RIGHTS
AND SALES RIGHTS ARE EXPRESSLY RESERVED BY SAMTEC,
INC. THIS DOCUMENT SHALL NOT BE DISCLOSED, IN WHOLE
OR PART, TO ANY UNAUTHORIZED PERSON OR ENTITY NOR
REPRODUCED, TRANSFERRED OR INCORPORATED IN ANY
OTHER PROJECT IN ANY MANNER WITHOUT THE EXPRESS
WRITTEN CONSENT OF SAMTEC, INC.

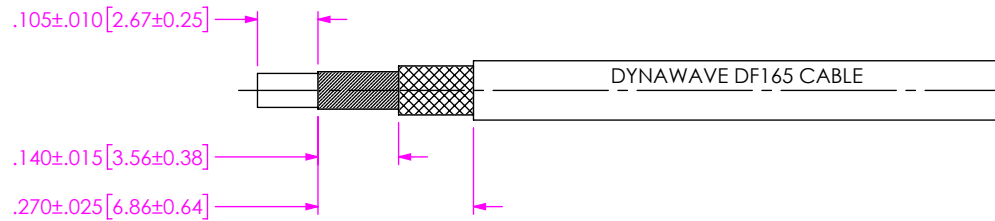
DO NOT SCALE DRAWING

SHEET SCALE: 3:1

DESCRIPTION: 1.85MM PLUG, SOLDER CLAMP FOR
DYNAWAVE DF165 CABLE. KNURL/HEX

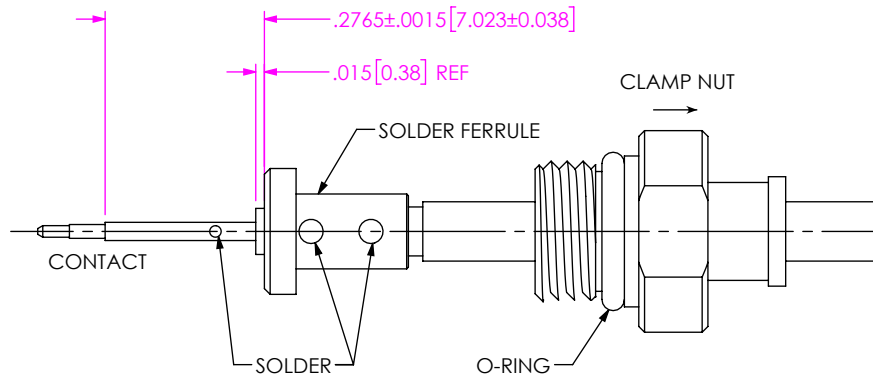
DWG. NO. PRF18-P-C-EP-086E-SS

BY: ETHAN C 02/26/2021 SHEET 1 OF 2



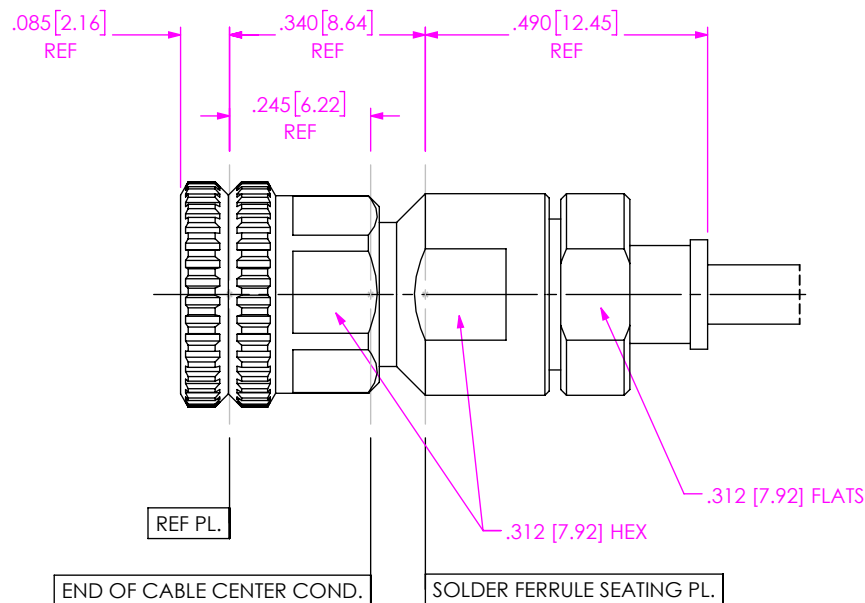
1A. TRIM CABLE TO EXPOSE DIELECTRIC CORE AND CABLE BRAIDS AS SHOWN.

IN-PROCESS 1



- 2A. SLIDE CLAMP NUT ONTO CABLE IN ORIENTATION SHOWN.
- 2B. INSERT CABLE INTO SOLDER FERRULE UNTIL FULLY SEATED.
THEN SOLDER CABLE TO FERRULE WHERE SHOWN.
- 2C. TRIM CABLE DIELECTRIC FLUSH WITH FERRULE FACE.
(DO NOT SCORE CENTER CONDUCTOR).
- 2D. SLIDE DIELECTRIC STOP OVER CABLE CENTER CONDUCTOR
AND SOLDER CONTACT FLUSH TO STOP TO DIMENSION SHOWN.

IN-PROCESS 2



- 3A. INSERT CABLE SUB-ASSEMBLY INTO CONNECTOR BODY UNTIL SOLDER FERRULE IS SEATED AND TIGHTEN CLAMP NUT TO 25-35 IN-LBS.

PROPRIETARY NOTE

THIS DOCUMENT CONTAINS CONFIDENTIAL AND PROPRIETARY INFORMATION AND ALL DESIGN, MANUFACTURING, REPRODUCTION, USE, PATENT RIGHTS AND SALES RIGHTS ARE EXPRESSLY RESERVED BY SAMTEC, INC. THIS DOCUMENT SHALL NOT BE DISCLOSED, IN WHOLE OR PART, TO ANY UNAUTHORIZED PERSON OR ENTITY NOR REPRODUCED, TRANSFERRED OR INCORPORATED IN ANY OTHER PROJECT IN ANY MANNER WITHOUT THE EXPRESS WRITTEN CONSENT OF SAMTEC, INC.

samtec

520 PARK EAST BLVD, NEW ALBANY, IN 47150
PHONE: 812-944-6733 FAX: 812-948-5047
e-Mail info@SAMTEC.com code 55322

DO NOT SCALE DRAWING

SHEET SCALE: 3:1

DESCRIPTION: 1.85MM PLUG, SOLDER CLAMP FOR DYNAWAVE DF165 CABLE. KNURL/HEX

DWG. NO. PRF18-P-C-EP-086E-SS

BY:ETHAN C	02/26/2021	SHEET 2 OF 2
------------	------------	--------------

IN-PROCESS 3