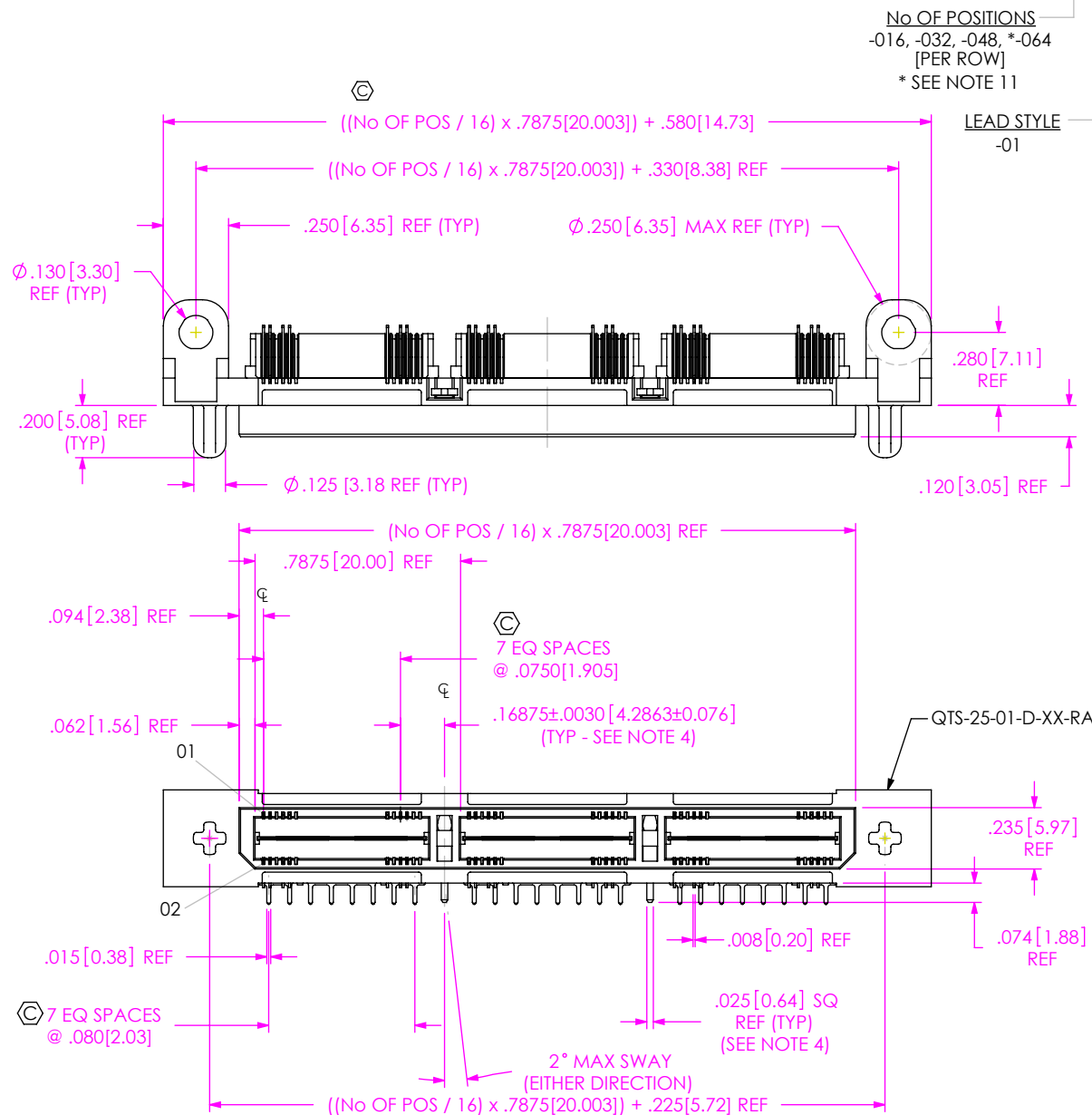


DO NOT SCALE FROM THIS PRINT



No OF POSITIONS  
-016, -032, -048, \*-064  
[PER ROW]  
\* SEE NOTE 11

LEAD STYLE  
-01

OPTION 2

-LS1: LOCKING SCREW (SEE NOTE 10)  
(FOR MATING WITH QSS...-RA...-LS1)  
(USE WITH SP-18-01-TM SOLDER PIN)  
(SEE FIG 2, SHT 3)  
-LS2: LOCKING SCREW (SEE NOTE 10)  
(FOR MATING WITH QSS...-LS2)  
(SEE FIG 3, SHT 3)  
(USE WITH SP-18-01-TM SOLDER PIN)  
-P: PICK AND PLACE PAD  
(USE PPP-63) (SEE FIG 5, SHT 4)

OPTION 1

-WT: WELD TAB (REQUIRED OPTION  
FOR POSITIONS -032, -048, & -064,  
NOT AVAILABLE FOR POSITION -016)  
(USE WT-16-01-T)

-RA: RIGHT ANGLE

DIFFERENTIAL PAIR

ROW SPECIFICATION

-D: DOUBLE (USE QTS-25-01-D-XX-RA)

PLATING SPECIFICATION

-H: HEAVY GOLD  
(USE T-1S52-01-H, T-1S53-03-H, IM-1G14-01-1-L)  
(SEE NOTE 6)  
-F: FLASH SELECTIVE GOLD, MATTE TIN TAIL  
(USE T-1S52-01-F, T-1S53-03-F, IM-1G14-01-1-F)  
(SEE NOTE 6)  
-L: LIGHT SELECTIVE GOLD, MATTE TIN TAIL  
(USE T-1S52-01-L, T-1S53-03-L, IM-1G14-01-1-L)  
(SEE NOTE 6)

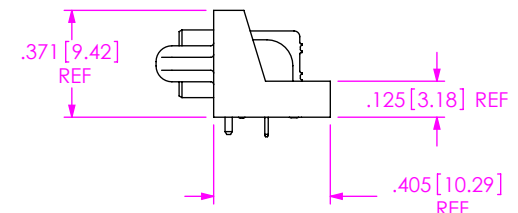


FIG 1  
(QTS-048-01-X-D-DP-RA-WT SHOWN)

NOTES:

1.  $\phi$  REPRESENTS A CRITICAL DIMENSION.
2. BURR ALLOWANCE: .0010 MAX.
3. MINIMUM PUSHOUT FORCE: 5 OZ.
4. DIMENSION ONLY APPLICABLE WITH WELD TAB OPTION.  
WELD TABS NOT AVAILABLE ON -016 POSITION.
5. TIPS OF TERMINALS MAY NOT EXTEND BEYOND THIS SURFACE.
6. IF NEEDED, -L PLATING CAN BE SUBSTITUTED FOR -F PLATING.
7. DESIGNED FOR USE WITH A .062 THICK PCB
8. PARTS TO BE PACKAGED IN TRAY AS STANDARD.
9. NOTE DELETED.
10. MAXIMUM TORQUE ON STS-02 TO BE 20 IN-OZ.
11. AVAILABLE FOR EXISTING CUSTOMERS ONLY.
12. USE -Z- DATUM ZONE ONLY FOR MEASUREMENTS.

UNLESS OTHERWISE SPECIFIED,  
DIMENSIONS ARE IN INCHES.  
TOLERANCES ARE:  
DECIMALS ANGLES  
.XX:  $\pm .01$  [0.3]  
.XXX:  $\pm .005$  [0.13]  
.XXXX:  $\pm .0020$  [0.051]

PROPRIETARY NOTE  
THIS DOCUMENT CONTAINS CONFIDENTIAL AND  
PROPRIETARY INFORMATION AND ALL DESIGN,  
MANUFACTURING, REPRODUCTION, USE, PATENT RIGHTS  
AND SALES RIGHTS ARE EXPRESSLY RESERVED BY SAMTEC,  
INC. THIS DOCUMENT SHALL NOT BE DISCLOSED, IN WHOLE  
OR PART, TO ANY UNAUTHORIZED PERSON OR ENTITY NOR  
REPRODUCED, TRANSFERRED OR INCORPORATED IN ANY  
OTHER PROJECT IN ANY MANNER WITHOUT THE EXPRESS  
WRITTEN CONSENT OF SAMTEC, INC.



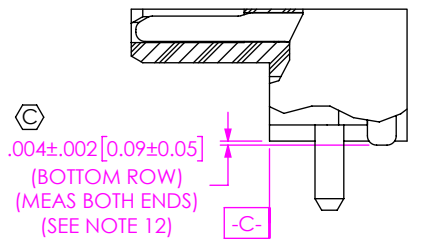
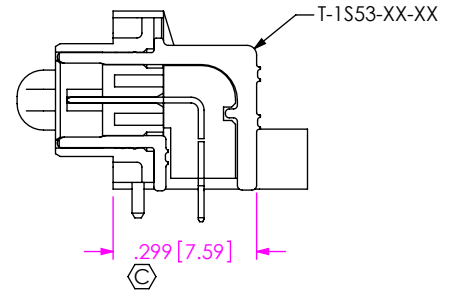
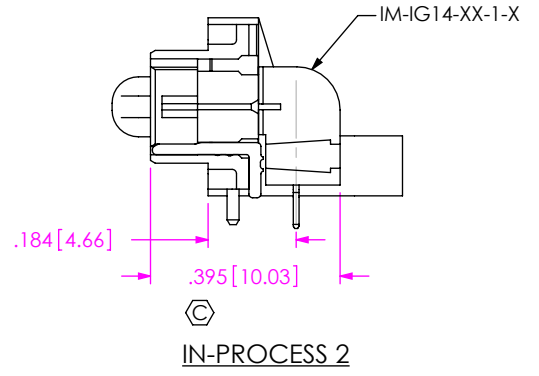
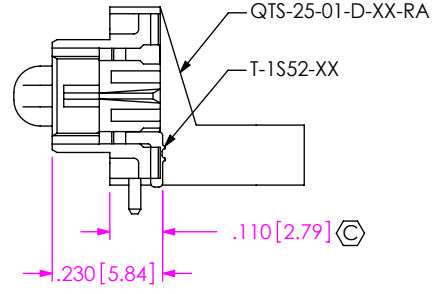
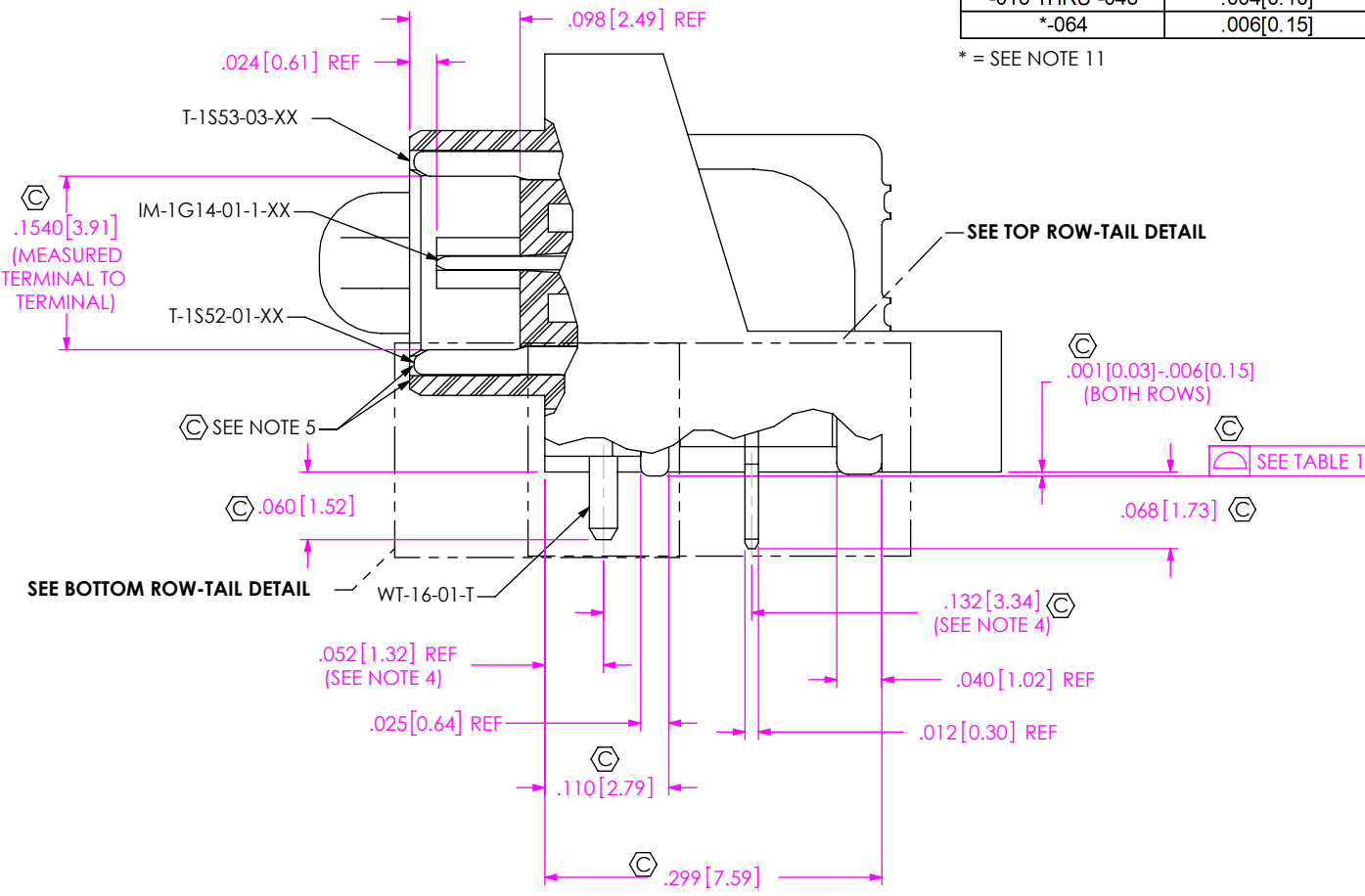
520 PARK EAST BLVD, NEW ALBANY, IN 47150  
PHONE: 812-944-6733 FAX: 812-948-5047  
e-Mail info@SAMTEC.com code 55322

MATERIAL: DO NOT SCALE DRAWING SHEET SCALE: 1:0.6666666666666667  
INSULATOR: .635mm DOUBLE ROW RIGHT ANGLE TERMINAL STRIP  
TERMINAL & GROUND PLANE: PHOS BRONZE

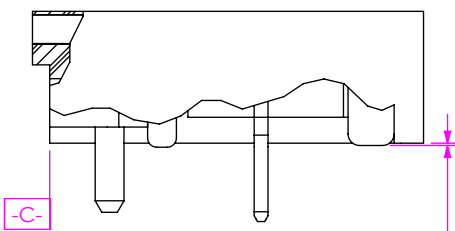
DESCRIPTION:  
.635mm DOUBLE ROW RIGHT ANGLE TERMINAL STRIP  
DWG. NO.  
QTS-XXX-01-X-D-DP-RA-XX-XXX  
BY: DEAN P 2/13/2003 SHEET 1 OF 4

TABLE 1	
No OF POSITIONS	COPLANARITY
-016 THRU -048	.004[0.10]
*-064	.006[0.15]

\* = SEE NOTE 11



BOTTOM ROW - TAIL DETAIL  
(LOCATE ASSEMBLY ON DATUM -C- FOR MEASUREMENT)



TOP ROW - TAIL DETAIL  
(LOCATE ASSEMBLY ON DATUM -C- FOR MEASUREMENT)

**PROPRIETARY NOTE**  
THIS DOCUMENT CONTAINS CONFIDENTIAL AND PROPRIETARY INFORMATION AND ALL DESIGN, MANUFACTURING, REPRODUCTION, USE, PATENT RIGHTS AND SALES RIGHTS ARE EXPRESSLY RESERVED BY SAMTEC, INC. THIS DOCUMENT SHALL NOT BE DISCLOSED, IN WHOLE OR PART, TO ANY UNAUTHORIZED PERSON OR ENTITY NOR REPRODUCED, TRANSFERRED OR INCORPORATED IN ANY OTHER PROJECT IN ANY MANNER WITHOUT THE EXPRESS WRITTEN CONSENT OF SAMTEC, INC.

DO NOT SCALE DRAWING  
SHEET SCALE: 1:0.166667



520 PARK EAST BLVD, NEW ALBANY, IN 47150  
PHONE: 812-944-6733 FAX: 812-948-5047  
e-Mail info@SAMTEC.com code 55322

DESCRIPTION:  
.635mm DOUBLE ROW RIGHT ANGLE TERMINAL STRIP  
DWG. NO. QTS-XXX-01-X-D-DP-RA-XX-XXX

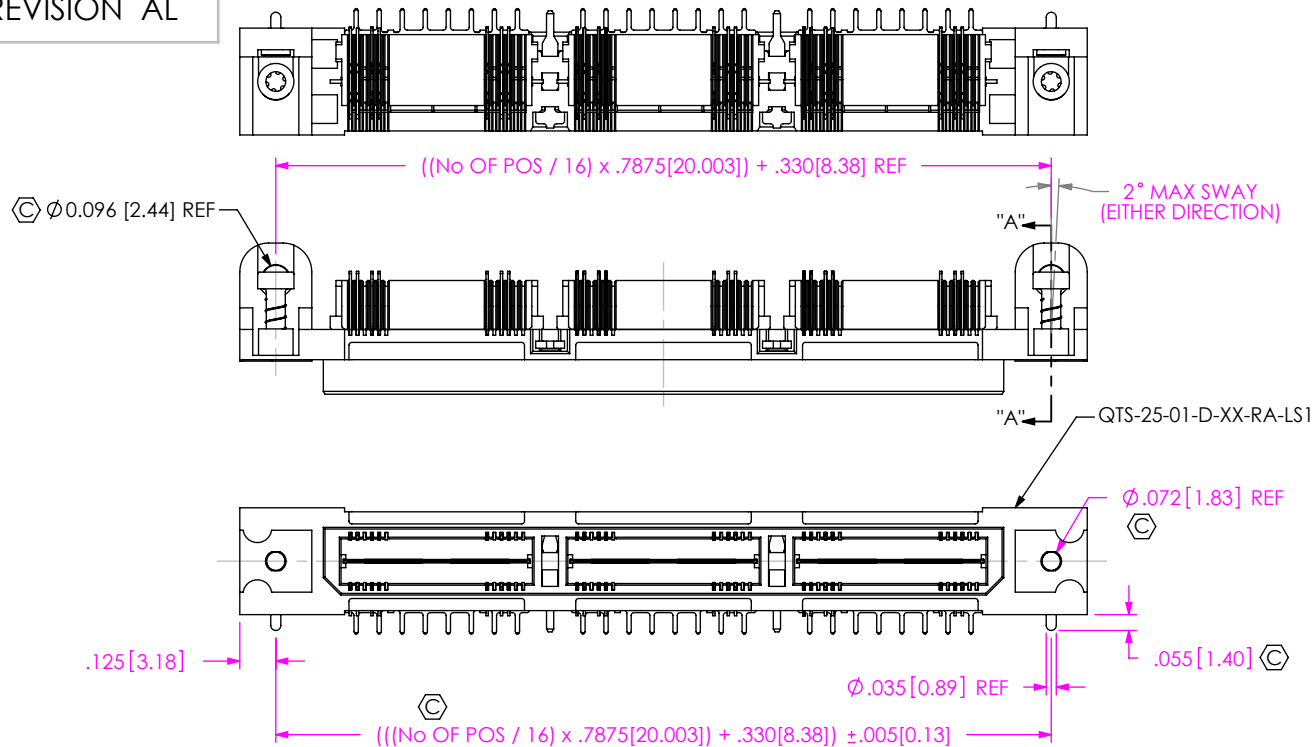
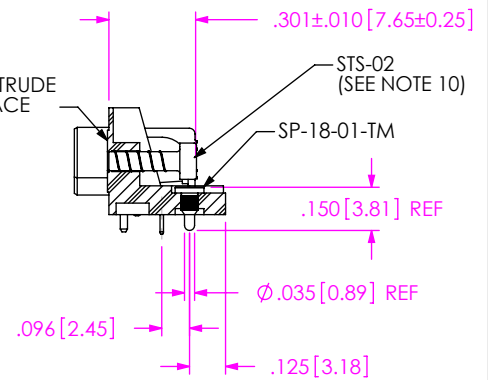


FIG 2  
-LS1 OPTION  
(QTS-048-01-X-D-DP-RA-WT-LS1 SHOWN)  
(SAME AS FIG 1, EXCEPT AS SHOWN)



SECTION "A"-"A"

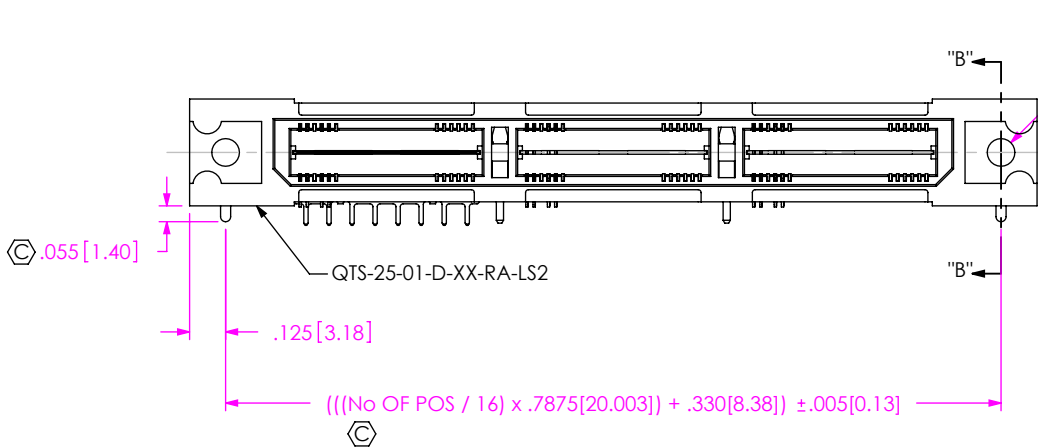
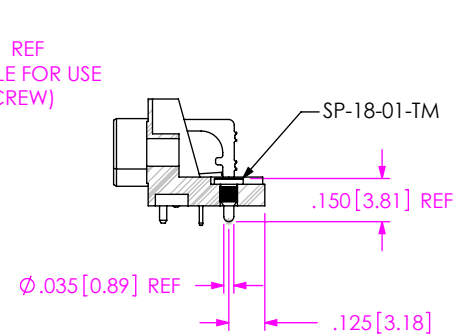


FIG 3  
-LS2 OPTION  
(QTS-048-01-X-D-DP-RA-WT-LS2 SHOWN)  
(SAME AS FIG 2, EXCEPT AS SHOWN)



SECTION "B"-"B"

PROPRIETARY NOTE  
THIS DOCUMENT CONTAINS CONFIDENTIAL AND PROPRIETARY INFORMATION AND ALL DESIGN, MANUFACTURING, REPRODUCTION, USE, PATENT RIGHTS AND SALES RIGHTS ARE EXPRESSLY RESERVED BY SAMTEC, INC. THIS DOCUMENT SHALL NOT BE DISCLOSED, IN WHOLE OR PART, TO ANY UNAUTHORIZED PERSON OR ENTITY NOR REPRODUCED, TRANSFERRED OR INCORPORATED IN ANY OTHER PROJECT IN ANY MANNER WITHOUT THE EXPRESS WRITTEN CONSENT OF SAMTEC, INC.

DO NOT SCALE DRAWING  
SHEET SCALE: 1:0.666667



520 PARK EAST BLVD, NEW ALBANY, IN 47150  
PHONE: 812-944-6733 FAX: 812-948-5047  
e-Mail info@SAMTEC.com code 55322

DESCRIPTION:  
.635mm DOUBLE ROW RIGHT ANGLE TERMINAL STRIP

DWG. NO.  
QTS-XXX-01-X-D-DP-RA-XX-XXX

BY: DEAN P 2/13/2003 SHEET 3 OF 4

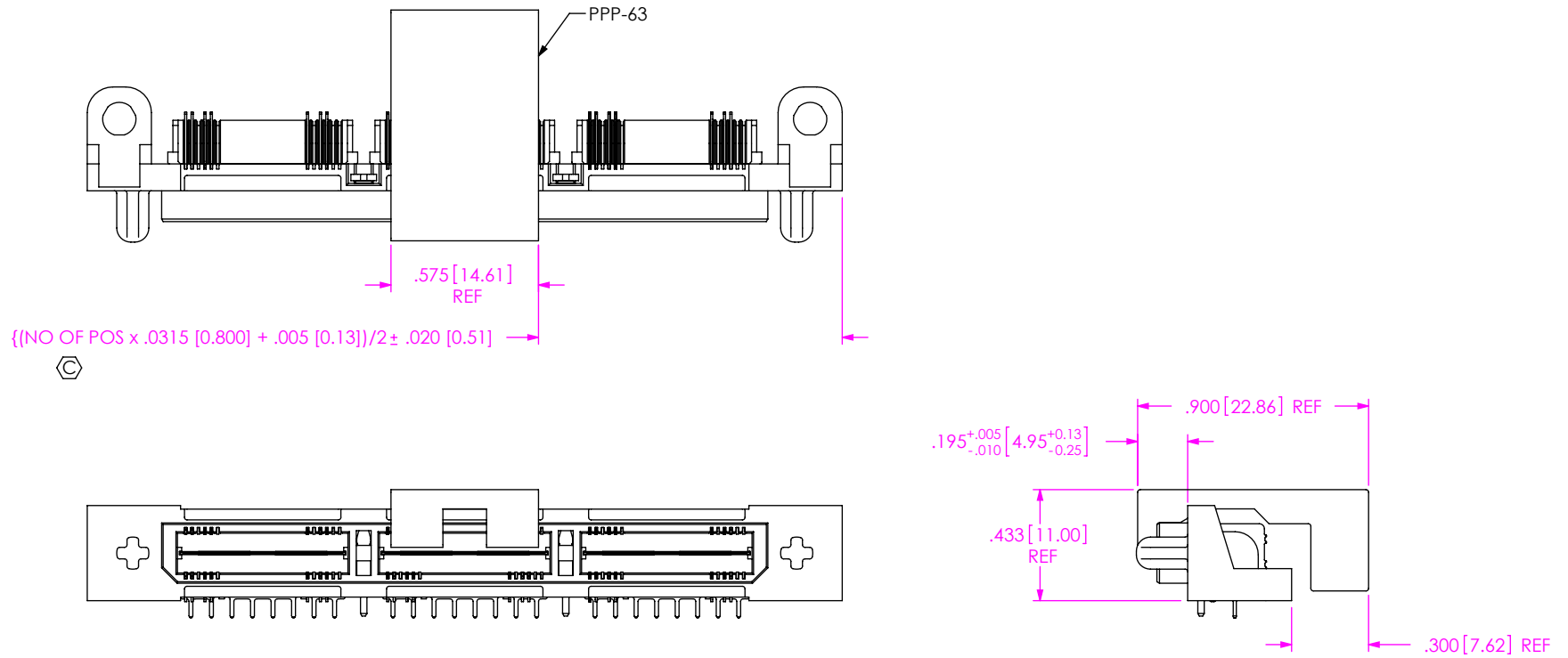


FIG 4  
-P OPTION  
(QTS-075-01-X-D-DP-RA-WT-P SHOWN)  
(SAME AS FIG 1, EXCEPT AS SHOWN)

**PROPRIETARY NOTE**  
THIS DOCUMENT CONTAINS CONFIDENTIAL AND PROPRIETARY INFORMATION AND ALL DESIGN, MANUFACTURING, REPRODUCTION, USE, PATENT RIGHTS AND SALES RIGHTS ARE EXPRESSLY RESERVED BY SAMTEC, INC. THIS DOCUMENT SHALL NOT BE DISCLOSED, IN WHOLE OR PART, TO ANY UNAUTHORIZED PERSON OR ENTITY NOR REPRODUCED, TRANSFERRED OR INCORPORATED IN ANY OTHER PROJECT IN ANY MANNER WITHOUT THE EXPRESS WRITTEN CONSENT OF SAMTEC, INC.

DO NOT SCALE DRAWING  
SHEET SCALE: 1:0.666667



520 PARK EAST BLVD, NEW ALBANY, IN 47150  
PHONE: 812-944-6733 FAX: 812-948-5047  
e-Mail info@SAMTEC.com code 55322

DESCRIPTION:  
.635mm DOUBLE ROW RIGHT ANGLE TERMINAL STRIP

DWG. NO.  
QTS-XXX-01-X-D-DP-RA-XX-XXX

BY: DEAN P 2/13/2003 SHEET 4 OF 4