

**THIS PRODUCT MANUFACTURED
WITH LEAD-FREE PROCESSING**

**DESIGNED & DIMENSIONED
IN MILLIMETERS[INCHES]**

DO NOT
SCALE FROM
THIS PRINT

TABLE 1

ITEM	COMPONENT	-HN	-GN
1	FERRULE	SMA-FER-001-N	
2	CABLE BODY	NTPE-J-C-N-ST-BH1-CBDY	
3	INSULATOR	NTPE-INS-001	
4	SOCKET	NTPE-J-C-H-ST-BH1-SKT	NTPE-J-C-G-ST-BH1-SKT
5	SUB ASSEMBLY	SUB-NTPE-J-C-N-ST-BH1	
6	GASKET	NTPE-GKT-001	
7	LOCK WASHER	NTPE-LWAS-001-N	
8	HEX NUT	NTPE-NUT-001-N	

NTPE-J-C-XX-ST-BH1-X

GENDER
-J: JACK

TYPE
-C: CABLE

PACKAGING

-BLANK: INDIVIDUALLY BAGGED
-B: BULK PACKAGED (QTY=100 MAX)

TERMINATION

-BH1: BULKHEAD
(CCA-174 OR CCA-316)

ORIENTATION

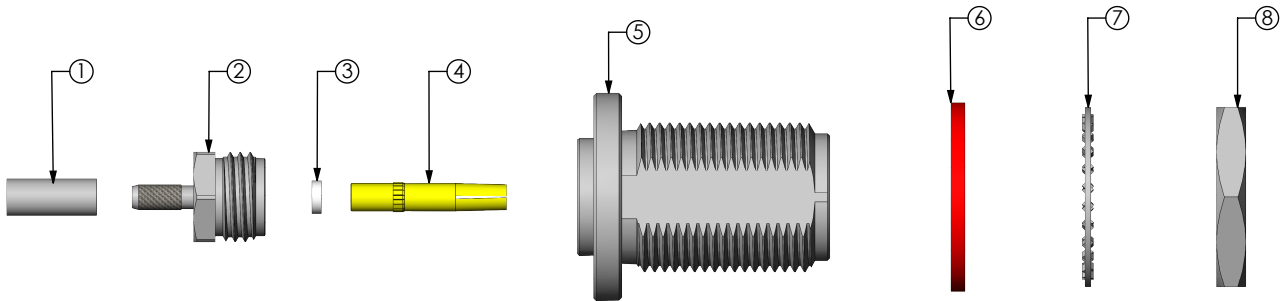
-ST: STRAIGHT

PLATING SPECIFICATION


-HN: HEAVY GOLD/NICKEL
30µ" CENTER CONTACT, NICKEL OTHER

-GN: GOLD/NICKEL

10µ" CENTER CONTACT, NICKEL OTHER

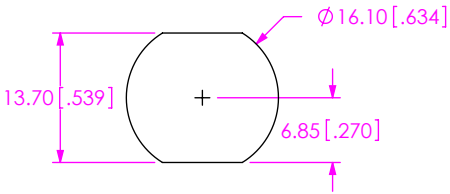


NOTES:

1.  REPRESENTS A CRITICAL DIMENSION.
2. NOTE DELETED.
3. NOTE DELETED.
4. PRODUCT TO BE PACKAGED PER PRECISION RF SECTION OF PACKAGING MANUAL.
5. NOTE DELETED.
6. NOTE DELETED.
7. NOTE DELETED.

RECOMMENDED MOUNTING HOLE

7.50[.295] MAX PANEL THICKNESS



UNLESS OTHERWISE SPECIFIED
DIMENSIONS ARE IN MILLIMETERS [INCHES]

TOLERANCES ARE:

DECIMALS ANGLES
.X: ±0.3 [.01] 2°
.XX: ±0.13 [.005]
.XXX: ±0.051 [.0020]

PROPRIETARY NOTE

THIS DOCUMENT CONTAINS INFORMATION
CONFIDENTIAL AND PROPRIETARY TO
SAMTEC, INC. AND SHALL NOT BE REPRODUCED
OR TRANSFERRED TO OTHER DOCUMENTS OR
DISCLOSED TO OTHERS OR USED FOR ANY
PURPOSE OTHER THAN THAT WHICH IT WAS
OBTAINED WITHOUT THE EXPRESSED WRITTEN
CONSENT OF SAMTEC, INC.

MATERIAL: DO NOT SCALE DRAWING SHEET SCALE: 1.25:1
SHELLS,FERRULES,NUTS,WASHERS: BRASS
CONTACT: COPPER ALLOY
DIELECTRIC: PTFE
GASKET: SILICONE

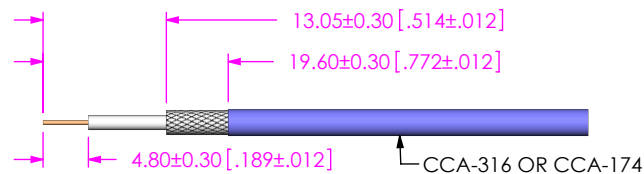
samtec

520 PARK EAST BLVD, NEW ALBANY, IN 47150
PHONE: 812-944-6733 FAX: 812-948-5047
e-Mail: info@SAMTEC.com code 55322

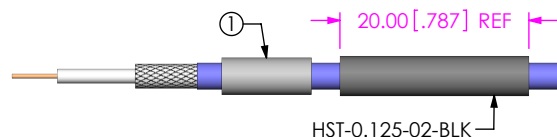
DESCRIPTION:
N TYPE STRAIGHT BULKHEAD CABLE JACK, RG174 & RG316 - 50 OHM

DWG. NO.
NTPE-J-C-XX-ST-BH1-X

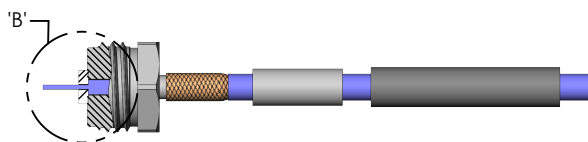
BY: R MUSSER 09-09-2010 SHEET 1 OF 3



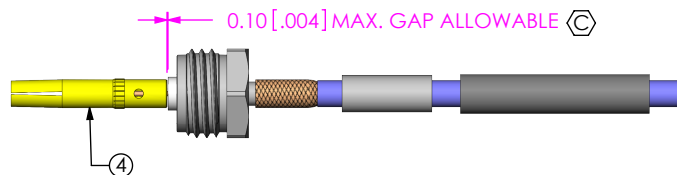
IN-PROCESS 1
STRIP AND TIN INNER
CONDUCTOR



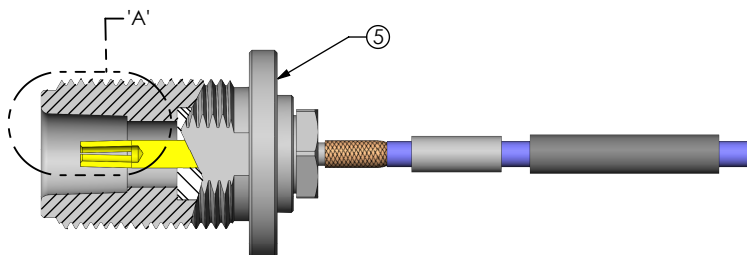
IN-PROCESS 2
ADD HEAT SHRINK
TUBE AND FERRULE



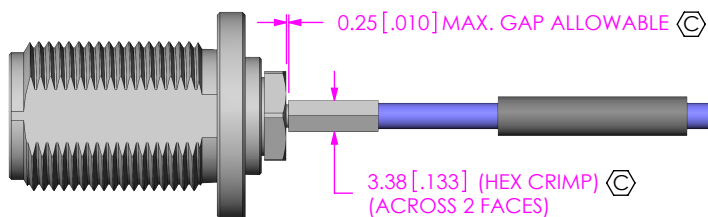
IN-PROCESS 3
ADD CABLE BODY &
INSULATOR



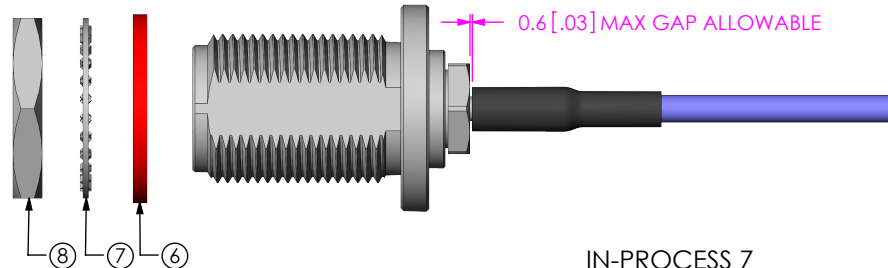
IN-PROCESS 4
SOLDER SIGNAL
SOCKET



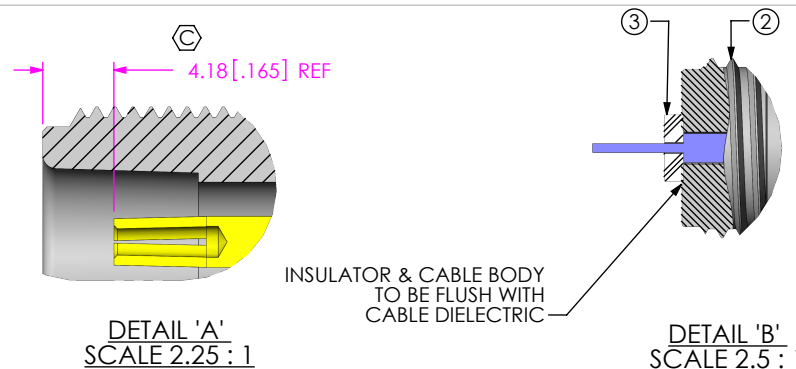
IN-PROCESS 5
ADD SUB ASSEMBLY
(TORQUE TO 30 INCH LBS)



IN-PROCESS 6
CRIMP FERRULE
(USE RF CRIMP
HAND TOOL #CAT-HT-126667-21
OR EQUIVALENT)
(USE .128" HEX DIE)



IN-PROCESS 7
APPLY HEAT SHRINK
TUBE & ADD GASKET



INSULATOR & CABLE BODY
TO BE FLUSH WITH
CABLE DIELECTRIC

DETAIL 'A'
SCALE 2.25 : 1

DETAIL 'B'
SCALE 2.5 : 1

c:\enterprisevault\DWG\MISC\MKTG\NTPE-J-C-XX-ST-BH1-X-MKT.SLDDRW

PROPRIETARY NOTE

THIS DOCUMENT CONTAINS INFORMATION
CONFIDENTIAL AND PROPRIETARY TO
SAMTEC, INC. AND SHALL NOT BE REPRODUCED
OR TRANSFERRED TO OTHER DOCUMENTS OR
DISCLOSED TO OTHERS OR USED FOR ANY
PURPOSE OTHER THAN THAT WHICH IT WAS
OBTAINED WITHOUT THE EXPRESSED WRITTEN
CONSENT OF SAMTEC, INC.

DO NOT SCALE DRAWING

SHEET SCALE: 1.25:1

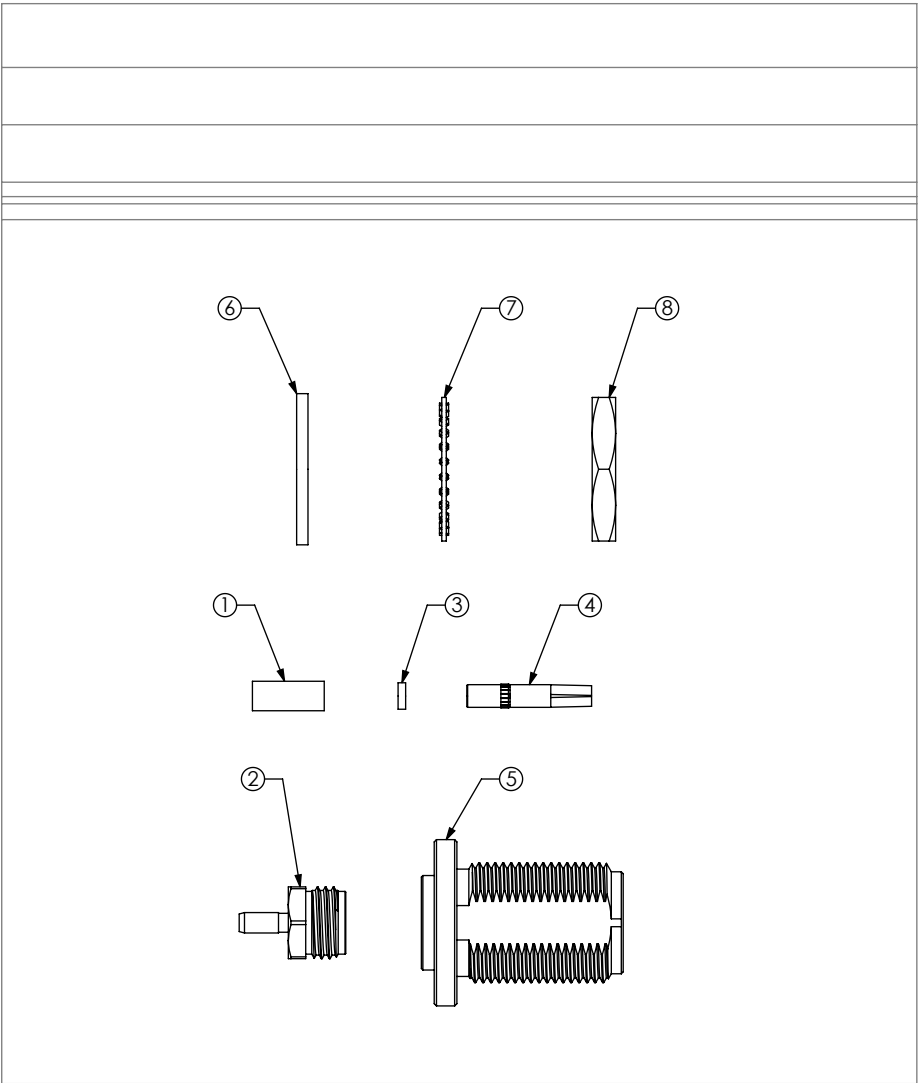
samtec

520 PARK EAST BLVD, NEW ALBANY, IN 47150
PHONE: 812-944-6733 FAX: 812-948-5047
e-Mail info@SAMTEC.com code 55322

DESCRIPTION:
N TYPE STRAIGHT BULKHEAD CABLE JACK, RG174 & RG316 - 50 OHM

DWG. NO.
NTPE-J-C-XX-ST-BH1-X

BY: R MUSSER 09-09-2010 SHEET 2 OF 3



PACKAGING VIEW
NTPC-J-C-XX-ST-BH1 SHOWN

<p>PROPRIETARY NOTE</p> <p>THIS DOCUMENT CONTAINS INFORMATION CONFIDENTIAL AND PROPRIETARY TO SAMTEC, INC. AND SHALL NOT BE REPRODUCED OR TRANSFERRED TO OTHER DOCUMENTS OR DISCLOSED TO OTHERS OR USED FOR ANY PURPOSE OTHER THAN THAT WHICH IT WAS OBTAINED WITHOUT THE EXPRESSED WRITTEN CONSENT OF SAMTEC, INC.</p>	
<p>DO NOT SCALE DRAWING</p> <p>SHEET SCALE: 1:1</p>	
<p>samtec</p> <p>520 PARK EAST BLVD, NEW ALBANY, IN 47150 PHONE: 812-944-6733 FAX: 812-948-5047 e-Mail info@SAMTEC.com code 55322</p>	
<p>DESCRIPTION: N TYPE STRAIGHT BULKHEAD CABLE JACK, RG174 & RG316 - 50 OHM</p>	
<p>DWG. NO. NTPC-J-C-XX-ST-BH1-X</p>	
BY: R MUSSER	09-09-2010
SHEET 3 OF 3	