

Data sheet

17200.8 SQUIK 2,5-10 YE



Insulating cap, Colour: Yellow

RAL: 1026

Business data

Article number	<u>17200.8</u>
Article name	SQIK 2,5-10 YE
GTIN (EAN)	4044211148539
Packaging unit	20
Quantity unit	PC
Weight per piece (not including packaging)	0.8 g
Weight per piece (including packaging)	0.86 g
Unit of weight	G
Customs number	85389099
Country of origin	DE
Prio-Article	17200.8
Product description	Insulating cap

Data sheet

17200.8 SQUIK 2,5-10 YE



Technical data

Dimensions

Length	4.2 mm
Width	4.9 mm
Height	12.2 mm

Materials

Insulation housing	Polyamide 6.6
Flammability class UL 94	V-2
Working temperature, min.	-40 °C
Working temperature, max.	105 °C

Further technical data

Mounting type	Plug in
Insulation available	✓

Environmental Product Compliance

REACH Candidate Substance Note	No
--------------------------------	----

Media

Data sheet

17200.8 SQUIK 2,5-10 YE

Accessories

##INVERSE##CONTA-CONNECT



Insulated cross-connector, No. of poles: 3, Mounting type: Plug in, Width: 17.4 mm, Rated cross-section: 4 mm², Colour: Yellow

Article number	Article name	GTIN (EAN)	Packaging unit
<u>17212.8</u>	SQI 4/3 YE	4044211148652	50



Insulated cross-connector, No. of poles: 7, Mounting type: Plug in, Width: 54.8 mm, Rated cross-section: 6 mm², Colour: Yellow

Article number	Article name	GTIN (EAN)	Packaging unit
<u>17226.8</u>	SQI 6/7 YE	4044211148799	20



Insulated cross-connector, No. of poles: 8, Mounting type: Plug in, Width: 62.9 mm, Rated cross-section: 6 mm², Colour: Yellow

Article number	Article name	GTIN (EAN)	Packaging unit
<u>17227.8</u>	SQI 6/8 YE	4044211148805	10



Insulated cross-connector, No. of poles: 9, Mounting type: Plug in, Width: 88.2 mm, Rated cross-section: 10 mm², Colour: Yellow

Article number	Article name	GTIN (EAN)	Packaging unit
<u>17238.8</u>	SQI 10/9 YE	4044211148911	10



Insulated cross-connector, No. of poles: 2, Mounting type: Plug in, Width: 11.3 mm, Rated cross-section: 4 mm², Colour: Yellow

Article number	Article name	GTIN (EAN)	Packaging unit
<u>17211.8</u>	SQI 4/2 YE	4044211148645	50



Insulated cross-connector, No. of poles: 8, Mounting type: Plug in, Width: 47.9 mm, Rated cross-section: 4 mm², Colour: Yellow

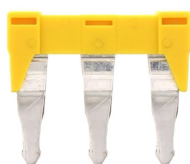
Article number	Article name	GTIN (EAN)	Packaging unit
<u>17217.8</u>	SQI 4/8 YE	4044211148706	10

##INVERSE##CONTA-CONNECT



Insulated cross-connector, No. of poles: 4, Mounting type: Plug in, Width: 30.5 mm, Rated cross-section: 6 mm², Colour: Yellow

Article number	Article name	GTIN (EAN)	Packaging unit
<u>17223.8</u>	SQI 6/4 YE	4044211148768	20



Insulated cross-connector, No. of poles: 3, Mounting type: Plug in, Width: 27.6 mm, Rated cross-section: 10 mm², Colour: Yellow

Article number	Article name	GTIN (EAN)	Packaging unit
<u>17232.8</u>	SQI 10/3 YE	4044211148850	50



Insulated cross-connector, No. of poles: 4, Mounting type: Plug in, Width: 20.1 mm, Rated cross-section: 2.5 mm², Colour: Yellow

Article number	Article name	GTIN (EAN)	Packaging unit
<u>17203.8</u>	SQI 2,5/4 YE	4044211148560	20



Insulated cross-connector, No. of poles: 6, Mounting type: Plug in, Width: 30.3 mm, Rated cross-section: 2.5 mm², Colour: Yellow

Article number	Article name	GTIN (EAN)	Packaging unit
<u>17205.8</u>	SQI 2,5/6 YE	4044211148584	20



Insulated cross-connector, No. of poles: 9, Mounting type: Plug in, Width: 45.6 mm, Rated cross-section: 2.5 mm², Colour: Yellow

Article number	Article name	GTIN (EAN)	Packaging unit
<u>17208.8</u>	SQI 2,5/9 YE	4044211148614	10



Insulated cross-connector, No. of poles: 30, Mounting type: Plug in, Width: 152.7 mm, Rated cross-section: 2.5 mm², Colour: Yellow

Article number	Article name	GTIN (EAN)	Packaging unit
<u>17210.8</u>	SQI 2,5/30 YE	4044211148638	5

##INVERSE##CONTA-CONNECT



Insulated cross-connector, No. of poles: 9, Mounting type: Plug in, Width: 54 mm, Rated cross-section: 4 mm², Colour: Yellow

Article number	Article name	GTIN (EAN)	Packaging unit
<u>17218.8</u>	SQI 4/9 YE	4044211148713	10



Insulated cross-connector, No. of poles: 10, Mounting type: Plug in, Width: 60.1 mm, Rated cross-section: 4 mm², Colour: Yellow

Article number	Article name	GTIN (EAN)	Packaging unit
<u>17219.8</u>	SQI 4/10 YE	4044211148720	10



Insulated cross-connector, No. of poles: 7, Mounting type: Plug in, Width: 68 mm, Rated cross-section: 10 mm², Colour: Yellow

Article number	Article name	GTIN (EAN)	Packaging unit
<u>17236.8</u>	SQI 10/7 YE	4044211148898	20



Insulated cross-connector, No. of poles: 30, Mounting type: Plug in, Width: 300.3 mm, Rated cross-section: 10 mm², Colour: Yellow

Article number	Article name	GTIN (EAN)	Packaging unit
<u>17240.8</u>	SQI 10/30 YE	4044211148935	5



Insulated cross-connector, No. of poles: 3, Mounting type: Plug in, Width: 15 mm, Rated cross-section: 2.5 mm², Colour: Yellow

Article number	Article name	GTIN (EAN)	Packaging unit
<u>17202.8</u>	SQI 2,5/3 YE	4044211148553	50



Insulated cross-connector, No. of poles: 5, Mounting type: Plug in, Width: 25.2 mm, Rated cross-section: 2.5 mm², Colour: Yellow

Article number	Article name	GTIN (EAN)	Packaging unit
<u>17204.8</u>	SQI 2,5/5 YE	4044211148577	20

##INVERSE##CONTA-CONNECT



Insulated cross-connector, No. of poles: 5, Mounting type: Plug in, Width: 29.6 mm, Rated cross-section: 4 mm², Colour: Yellow

Article number	Article name	GTIN (EAN)	Packaging unit
<u>17214.8</u>	SQI 4/5 YE	4044211148676	20



Insulated cross-connector, No. of poles: 6, Mounting type: Plug in, Width: 35.7 mm, Rated cross-section: 4 mm², Colour: Yellow

Article number	Article name	GTIN (EAN)	Packaging unit
<u>17215.8</u>	SQI 4/6 YE	4044211148683	20



Insulated cross-connector, No. of poles: 9, Mounting type: Plug in, Width: 71 mm, Rated cross-section: 6 mm², Colour: Yellow

Article number	Article name	GTIN (EAN)	Packaging unit
<u>17228.8</u>	SQI 6/9 YE	4044211148812	10



Insulated cross-connector, No. of poles: 10, Mounting type: Plug in, Width: 79.1 mm, Rated cross-section: 6 mm², Colour: Yellow

Article number	Article name	GTIN (EAN)	Packaging unit
<u>17229.8</u>	SQI 6/10 YE	4044211148829	10



Insulated cross-connector, No. of poles: 5, Mounting type: Plug in, Width: 47.8 mm, Rated cross-section: 10 mm², Colour: Yellow

Article number	Article name	GTIN (EAN)	Packaging unit
<u>17234.8</u>	SQI 10/5 YE	4044211148874	20



Insulated cross-connector, No. of poles: 2, Mounting type: Plug in, Width: 14.3 mm, Rated cross-section: 6 mm², Colour: Yellow

Article number	Article name	GTIN (EAN)	Packaging unit
<u>17221.8</u>	SQI 6/2 YE	4044211148744	50

##INVERSE##CONTA-CONNECT



Insulated cross-connector, No. of poles: 3, Mounting type: Plug in, Width: 22.4 mm, Rated cross-section: 6 mm², Colour: Yellow

Article number	Article name	GTIN (EAN)	Packaging unit
<u>17222.8</u>	SQI 6/3 YE	4044211148751	50



Insulated cross-connector, No. of poles: 4, Mounting type: Plug in, Width: 23.5 mm, Rated cross-section: 4 mm², Colour: Yellow

Article number	Article name	GTIN (EAN)	Packaging unit
<u>17213.8</u>	SQI 4/4 YE	4044211148669	20



Insulated cross-connector, No. of poles: 30, Mounting type: Plug in, Width: 181.1 mm, Rated cross-section: 4 mm², Colour: Yellow

Article number	Article name	GTIN (EAN)	Packaging unit
<u>17220.8</u>	SQI 4/30 YE	4044211148737	5



Insulated cross-connector, No. of poles: 6, Mounting type: Plug in, Width: 46.7 mm, Rated cross-section: 6 mm², Colour: Yellow

Article number	Article name	GTIN (EAN)	Packaging unit
<u>17225.8</u>	SQI 6/6 YE	4044211148782	20



Insulated cross-connector, No. of poles: 2, Mounting type: Plug in, Width: 17.5 mm, Rated cross-section: 10 mm², Colour: Yellow

Article number	Article name	GTIN (EAN)	Packaging unit
<u>17231.8</u>	SQI 10/2 YE	4044211148843	50



Insulated cross-connector, No. of poles: 4, Mounting type: Plug in, Width: 37.7 mm, Rated cross-section: 10 mm², Colour: Yellow

Article number	Article name	GTIN (EAN)	Packaging unit
<u>17233.8</u>	SQI 10/4 YE	4044211148867	20

##INVERSE##CONTA-CONNECT



Insulated cross-connector, No. of poles: 6, Mounting type: Plug in, Width: 57.9 mm, Rated cross-section: 10 mm², Colour: Yellow

Article number	Article name	GTIN (EAN)	Packaging unit
<u>17235.8</u>	SQI 10/6 YE	4044211148881	20



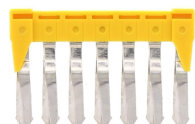
Insulated cross-connector, No. of poles: 10, Mounting type: Plug in, Width: 98.3 mm, Rated cross-section: 10 mm², Colour: Yellow

Article number	Article name	GTIN (EAN)	Packaging unit
<u>17239.8</u>	SQI 10/10 YE	4044211148928	5



Insulated cross-connector, No. of poles: 2, Mounting type: Plug in, Width: 9.9 mm, Rated cross-section: 2.5 mm², Colour: Yellow

Article number	Article name	GTIN (EAN)	Packaging unit
<u>17201.8</u>	SQI 2,5/2 YE	4044211148546	50



Insulated cross-connector, No. of poles: 7, Mounting type: Plug in, Width: 35.4 mm, Rated cross-section: 2.5 mm², Colour: Yellow

Article number	Article name	GTIN (EAN)	Packaging unit
<u>17206.8</u>	SQI 2,5/7 YE	4044211148591	20



Insulated cross-connector, No. of poles: 8, Mounting type: Plug in, Width: 40.5 mm, Rated cross-section: 2.5 mm², Colour: Yellow

Article number	Article name	GTIN (EAN)	Packaging unit
<u>17207.8</u>	SQI 2,5/8 YE	4044211148607	10



Insulated cross-connector, No. of poles: 10, Mounting type: Plug in, Width: 50.7 mm, Rated cross-section: 2.5 mm², Colour: Yellow

Article number	Article name	GTIN (EAN)	Packaging unit
<u>17209.8</u>	SQI 2,5/10 YE	4044211148621	10

##INVERSE##CONTA-CONNECT



Insulated cross-connector, No. of poles: 7, Mounting type: Plug in, Width: 41.8 mm, Rated cross-section: 4 mm², Colour: Yellow

Article number	Article name	GTIN (EAN)	Packaging unit
<u>17216.8</u>	SQI 4/7 YE	4044211148690	20



Insulated cross-connector, No. of poles: 30, Mounting type: Plug in, Width: 240 mm, Rated cross-section: 6 mm², Colour: Yellow

Article number	Article name	GTIN (EAN)	Packaging unit
<u>17230.8</u>	SQI 6/30 YE	4044211148836	5



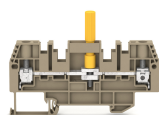
Insulated cross-connector, No. of poles: 8, Mounting type: Plug in, Width: 78.1 mm, Rated cross-section: 10 mm², Colour: Yellow

Article number	Article name	GTIN (EAN)	Packaging unit
<u>17237.8</u>	SQI 10/8 YE	4044211148904	10



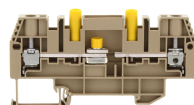
Insulated cross-connector, No. of poles: 5, Mounting type: Plug in, Width: 38.6 mm, Rated cross-section: 6 mm², Colour: Yellow

Article number	Article name	GTIN (EAN)	Packaging unit
<u>17224.8</u>	SQI 6/5 YE	4044211148775	20



Test disconnect terminal, Screw connection, Mounting type: Mounting rail TS 35/7.5, Rated cross-section: 6 mm², Width: 8.1 mm, Colour: Beige

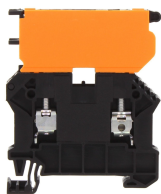
Article number	Article name	GTIN (EAN)	Packaging unit
<u>17523.2</u>	SPTK 6/LT/HB BG	4044211209223	50 ST



Test disconnect terminal, Screw connection, Mounting type: Mounting rail TS 35/7.5, Rated cross-section: 6 mm², Width: 8.1 mm, Colour: Beige

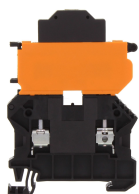
Article number	Article name	GTIN (EAN)	Packaging unit
<u>17524.2</u>	SPTK 6/LT/STBI/YE BG	4044211209919	50 ST

##INVERSE##CONTA-CONNECT



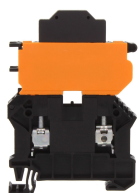
Fuse-disconnect terminal, Screw connection, Mounting type: Mounting rail TS 35/7.5,
Rated cross-section: 6 mm², Width: 8.1 mm, Colour: Black

Article number	Article name	GTIN (EAN)	Packaging unit
<u>17151.4</u>	SSIK 6/2A BK	4044211188993	50 ST



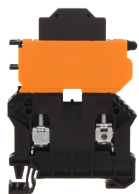
Fuse-disconnect terminal, Screw connection, Mounting type: Mounting rail TS 35/7.5,
Rated cross-section: 4 mm², Width: 6.1 mm, Colour: Black

Article number	Article name	GTIN (EAN)	Packaging unit
<u>17172.4</u>	SSIK 4/2A/LED 30-60V AC/DC BK	4044211180447	25 ST



Fuse-disconnect terminal, Screw connection, Mounting type: Mounting rail TS 35/7.5,
Rated cross-section: 6 mm², Width: 8.1 mm, Colour: Black

Article number	Article name	GTIN (EAN)	Packaging unit
<u>17176.4</u>	SSIK 6/2A/LED 30-60V AC/DC BK	4044211188931	50 ST



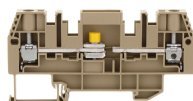
Fuse-disconnect terminal, Screw connection, Mounting type: Mounting rail TS 35/7.5,
Rated cross-section: 6 mm², Width: 8.1 mm, Colour: Black

Article number	Article name	GTIN (EAN)	Packaging unit
<u>17178.4</u>	SSIK 6/2A/LED 500V AC/DC BK	4044211188948	50 ST



Test disconnect terminal, Screw connection, Mounting type: Mounting rail TS 35/7.5,
Rated cross-section: 6 mm², Width: 8.1 mm, Colour: Beige

Article number	Article name	GTIN (EAN)	Packaging unit
<u>17520.2</u>	SPTK 6/DU BG	4044211209650	50 ST



Test disconnect terminal, Screw connection, Mounting type: Mounting rail TS 35/7.5,
Rated cross-section: 6 mm², Width: 8.1 mm, Colour: Beige

Article number	Article name	GTIN (EAN)	Packaging unit
<u>17521.2</u>	SPTK 6/LT BG	4044211209162	50 ST

##INVERSE##CONTA-CONNECT



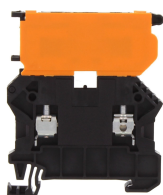
Test disconnect terminal, Screw connection, Mounting type: Mounting rail TS 35/7.5,
Rated cross-section: 6 mm², Width: 8.1 mm, Colour: Beige

Article number	Article name	GTIN (EAN)	Packaging unit
<u>17522.2</u>	SPTK 6/QT BG	4044211209216	50 ST



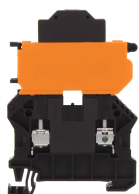
Test disconnect terminal, Screw connection, Mounting type: Mounting rail TS 35/7.5,
Rated cross-section: 6 mm², Width: 8.1 mm, Colour: Beige

Article number	Article name	GTIN (EAN)	Packaging unit
<u>17525.2</u>	SPTK 6/LT/STBI/BU BG	4044211209926	50 ST



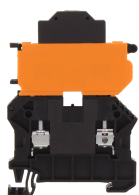
Fuse-disconnect terminal, Screw connection, Mounting type: Mounting rail TS 35/7.5,
Rated cross-section: 4 mm², Width: 6.1 mm, Colour: Black

Article number	Article name	GTIN (EAN)	Packaging unit
<u>17150.4</u>	SSIK 4/2A BK	4044211179816	50 ST



Fuse-disconnect terminal, Screw connection, Mounting type: Mounting rail TS 35/7.5,
Rated cross-section: 4 mm², Width: 6.1 mm, Colour: Black

Article number	Article name	GTIN (EAN)	Packaging unit
<u>17171.4</u>	SSIK 4/2A/LED 12-30V AC/DC BK	4044211180430	25 ST



Fuse-disconnect terminal, Screw connection, Mounting type: Mounting rail TS 35/7.5,
Rated cross-section: 4 mm², Width: 6.1 mm, Colour: Black

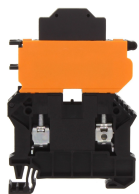
Article number	Article name	GTIN (EAN)	Packaging unit
<u>17173.4</u>	SSIK 4/2A/LED 110-250V AC/DC BK	4044211180454	25 ST



Fuse-disconnect terminal, Screw connection, Mounting type: Mounting rail TS 35/7.5,
Rated cross-section: 4 mm², Width: 6.1 mm, Colour: Black

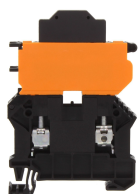
Article number	Article name	GTIN (EAN)	Packaging unit
<u>17174.4</u>	SSIK 4/2A/LED 500V AC/DC BK	4044211180461	25 ST

##INVERSE##CONTA-CONNECT



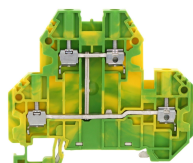
Fuse-disconnect terminal, Screw connection, Mounting type: Mounting rail TS 35/7.5, Rated cross-section: 6 mm², Width: 8.1 mm, Colour: Black

Article number	Article name	GTIN (EAN)	Packaging unit
<u>17175.4</u>	SSIK 6/2A/LED 12-30V AC/DC BK	4044211188924	50 ST



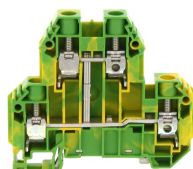
Fuse-disconnect terminal, Screw connection, Mounting type: Mounting rail TS 35/7.5, Rated cross-section: 6 mm², Width: 8.1 mm, Colour: Black

Article number	Article name	GTIN (EAN)	Packaging unit
<u>17177.4</u>	SSIK 6/2A/LED 110-250V AC/DC BK	4044211188955	50 ST



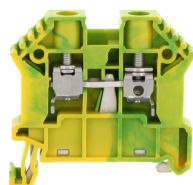
Protective-earth double-level terminal, Screw connection, Mounting type: Mounting rail TS 35/7.5, Rated cross-section: 2.5 mm², Width: 5.1 mm, Colour: Green-yellow

Article number	Article name	GTIN (EAN)	Packaging unit
<u>17182.2</u>	SSLD 2,5 GNYE	4044211190705	100 ST



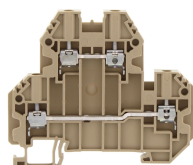
Protective-earth double-level terminal, Screw connection, Mounting type: Mounting rail TS 35/7.5, Rated cross-section: 10 mm², Width: 10.1 mm, Colour: Green-yellow

Article number	Article name	GTIN (EAN)	Packaging unit
<u>17192.2</u>	SSLD 10 GNYE	4044211190804	50 ST



Protective earth terminal, Screw connection, Mounting type: Mounting rail TS 35/7.5, Rated cross-section: 10 mm², Width: 8 mm, Colour: Green-yellow

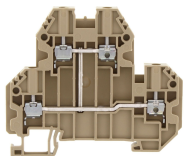
Article number	Article name	GTIN (EAN)	Packaging unit
<u>17111.2</u>	SSL 6/2A GNYE	4044211141769	100 ST



Double-level terminal, Screw connection, Mounting type: Mounting rail TS 35/7.5, Rated cross-section: 2.5 mm², Width: 5.1 mm, Colour: Beige

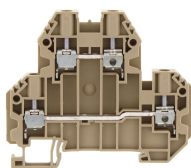
Article number	Article name	GTIN (EAN)	Packaging unit
<u>17180.2</u>	SRKD 2,5 BG	4044211190668	100

##INVERSE##CONTA-CONNECT



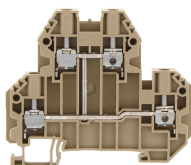
Double-level terminal, Screw connection, Mounting type: Mounting rail TS 35/7.5, Rated cross-section: 2.5 mm², Width: 5.1 mm, Colour: Beige

Article number	Article name	GTIN (EAN)	Packaging unit
<u>17181.2</u>	SRKD 2,5/SV BG	4044211190682	100



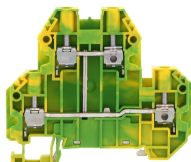
Double-level terminal, Screw connection, Mounting type: Mounting rail TS 35/7.5, Rated cross-section: 4 mm², Width: 6.1 mm, Colour: Beige

Article number	Article name	GTIN (EAN)	Packaging unit
<u>17185.2</u>	SRKD 4 BG	4044211190712	100



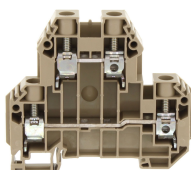
Double-level terminal, Screw connection, Mounting type: Mounting rail TS 35/7.5, Rated cross-section: 4 mm², Width: 6.1 mm, Colour: Beige

Article number	Article name	GTIN (EAN)	Packaging unit
<u>17186.2</u>	SRKD 4/SV BG	4044211190736	100



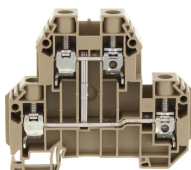
Protective-earth double-level terminal, Screw connection, Mounting type: Mounting rail TS 35/7.5, Rated cross-section: 4 mm², Width: 6.1 mm, Colour: Green-yellow

Article number	Article name	GTIN (EAN)	Packaging unit
<u>17187.2</u>	SSLD 4 GNYE	4044211190750	100 ST



Double-level terminal, Screw connection, Mounting type: Mounting rail TS 35/7.5, Rated cross-section: 10 mm², Width: 10.1 mm, Colour: Beige

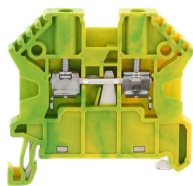
Article number	Article name	GTIN (EAN)	Packaging unit
<u>17190.2</u>	SRKD 10 BG	4044211190767	50



Double-level terminal, Screw connection, Mounting type: Mounting rail TS 35/7.5, Rated cross-section: 10 mm², Width: 10.1 mm, Colour: Beige

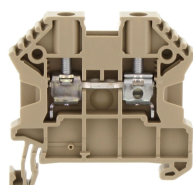
Article number	Article name	GTIN (EAN)	Packaging unit
<u>17191.2</u>	SRKD 10/SV BG	4044211190781	50

##INVERSE##CONTA-CONNECT



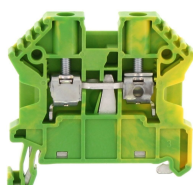
Protective earth terminal, Screw connection, Mounting type: Mounting rail TS 35/7.5, Rated cross-section: 2.5 mm², Width: 5 mm, Colour: Green-yellow

Article number	Article name	GTIN (EAN)	Packaging unit
<u>17103.2</u>	SSL 2,5/2A GNYE	4044211141684	100 ST



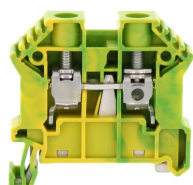
Feed-through terminal, Screw connection, Mounting type: Mounting rail TS 35/7.5, Rated cross-section: 4 mm², Width: 6 mm, Colour: Beige

Article number	Article name	GTIN (EAN)	Packaging unit
<u>17106.2</u>	SRK 4/2A/Z BG	4044211141714	100 ST



Protective earth terminal, Screw connection, Mounting type: Mounting rail TS 35/7.5, Rated cross-section: 4 mm², Width: 6 mm, Colour: Green-yellow

Article number	Article name	GTIN (EAN)	Packaging unit
<u>17107.2</u>	SSL 4/2A GNYE	4044211141721	100 ST



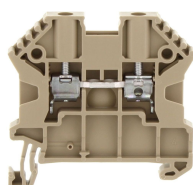
Protective earth terminal, Screw connection, Mounting type: Mounting rail TS 35/7.5, Rated cross-section: 16 mm², Width: 10 mm, Colour: Green-yellow

Article number	Article name	GTIN (EAN)	Packaging unit
<u>17115.2</u>	SSL 10/2A GNYE	4044211141806	100 ST



Feed-through terminal, Screw connection, Mounting type: Mounting rail TS 35/7.5, Rated cross-section: 10 mm², Width: 8 mm, Colour: Black-yellow

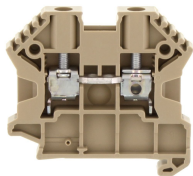
Article number	Article name	GTIN (EAN)	Packaging unit
<u>17132.2</u>	SRK 6/2A/PE BKYE	4044211200718	100 ST



Feed-through terminal, Screw connection, Mounting type: Mounting rail TS 35/7.5, Rated cross-section: 2.5 mm², Width: 5 mm, Colour: Beige

Article number	Article name	GTIN (EAN)	Packaging unit
<u>17100.2</u>	SRK 2,5/2A BG	4044211141653	100

##INVERSE##CONTA-CONNECT



Feed-through terminal, Screw connection, Mounting type: Mounting rail TS 35/7.5, Rated cross-section: 16 mm², Width: 10 mm, Colour: Beige

Article number	Article name	GTIN (EAN)	Packaging unit
<u>17113.2</u>	SRK B 10/2A BG	4044211141783	100



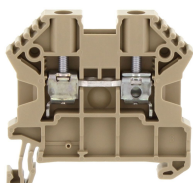
Feed-through terminal, Screw connection, Mounting type: Mounting rail TS 35/7.5, Rated cross-section: 2.5 mm², Width: 5 mm, Colour: Black-yellow

Article number	Article name	GTIN (EAN)	Packaging unit
<u>17129.2</u>	SRK 2,5/2A/PE BKYE	4044211200688	100 ST



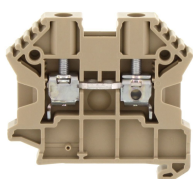
Feed-through terminal, Screw connection, Mounting type: Mounting rail TS 35/7.5, Rated cross-section: 4 mm², Width: 6 mm, Colour: Black-yellow

Article number	Article name	GTIN (EAN)	Packaging unit
<u>17155.2</u>	SRK 4/2A/PE BKYE	4044211186692	100 ST



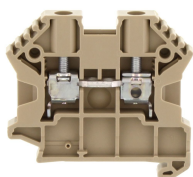
Feed-through terminal, Screw connection, Mounting type: Mounting rail TS 35/7.5, Rated cross-section: 4 mm², Width: 6 mm, Colour: Beige

Article number	Article name	GTIN (EAN)	Packaging unit
<u>17104.2</u>	SRK 4/2A BG	4044211141691	100



Feed-through terminal, Screw connection, Mounting type: Mounting rail TS 35/7.5, Rated cross-section: 4 mm², Width: 6 mm, Colour: Beige

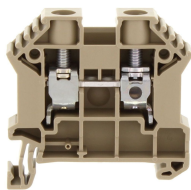
Article number	Article name	GTIN (EAN)	Packaging unit
<u>17105.2</u>	SRK B 4/2A BG	4044211141707	100 ST



Feed-through terminal, Screw connection, Mounting type: Mounting rail TS 35/7.5, Rated cross-section: 10 mm², Width: 8 mm, Colour: Beige

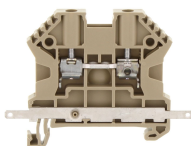
Article number	Article name	GTIN (EAN)	Packaging unit
<u>17109.2</u>	SRK B 6/2A BG	4044211141745	100 ST

##INVERSE##CONTA-CONNECT



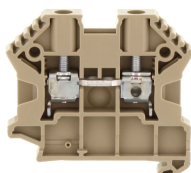
Feed-through terminal, Screw connection, Mounting type: Mounting rail TS 35/7.5, Rated cross-section: 16 mm², Width: 10 mm, Colour: Beige

Article number	Article name	GTIN (EAN)	Packaging unit
<u>17112.2</u>	SRK 10/2A BG	4044211141776	100



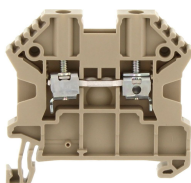
Feed-through terminal, Screw connection, Mounting type: Mounting rail TS 35/7.5, Rated cross-section: 2.5 mm², Width: 5 mm, Colour: Beige

Article number	Article name	GTIN (EAN)	Packaging unit
<u>17119.2</u>	SRK 2,5/2A SAS BG	4044211149048	80



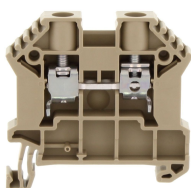
Feed-through terminal, Screw connection, Mounting type: Mounting rail TS 35/7.5, Rated cross-section: 2.5 mm², Width: 5 mm, Colour: Beige

Article number	Article name	GTIN (EAN)	Packaging unit
<u>17101.2</u>	SRK B 2,5/2A BG	4044211141660	100 ST



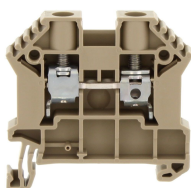
Feed-through terminal, Screw connection, Mounting type: Mounting rail TS 35/7.5, Rated cross-section: 2.5 mm², Width: 5 mm, Colour: Beige

Article number	Article name	GTIN (EAN)	Packaging unit
<u>17102.2</u>	SRK 2,5/2A/Z BG	4044211141677	100 ST



Feed-through terminal, Screw connection, Mounting type: Mounting rail TS 35/7.5, Rated cross-section: 10 mm², Width: 8 mm, Colour: Beige

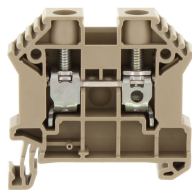
Article number	Article name	GTIN (EAN)	Packaging unit
<u>17108.2</u>	SRK 6/2A BG	4044211141738	100



Feed-through terminal, Screw connection, Mounting type: Mounting rail TS 35/7.5, Rated cross-section: 10 mm², Width: 8 mm, Colour: Beige

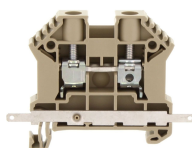
Article number	Article name	GTIN (EAN)	Packaging unit
<u>17110.2</u>	SRK 6/2A/Z BG	4044211141752	100 ST

##INVERSE##CONTA-CONNECT



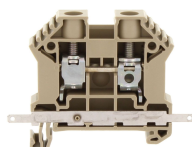
Feed-through terminal, Screw connection, Mounting type: Mounting rail TS 35/7.5, Rated cross-section: 16 mm², Width: 10 mm, Colour: Beige

Article number	Article name	GTIN (EAN)	Packaging unit
<u>17114.2</u>	SRK 10/2A/Z BG	4044211141790	100



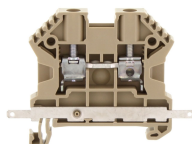
Feed-through terminal, Screw connection, Mounting type: Mounting rail TS 35/7.5, Rated cross-section: 10 mm², Width: 8 mm, Colour: Beige

Article number	Article name	GTIN (EAN)	Packaging unit
<u>17117.2</u>	SRK 6/2A SAS BG	4044211149000	80



Feed-through terminal, Screw connection, Mounting type: Mounting rail TS 35/7.5, Rated cross-section: 16 mm², Width: 10 mm, Colour: Beige

Article number	Article name	GTIN (EAN)	Packaging unit
<u>17118.2</u>	SRK 10/2A SAS BG	4044211149024	80



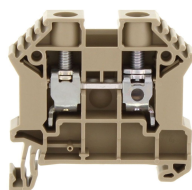
Feed-through terminal, Screw connection, Mounting type: Mounting rail TS 35/7.5, Rated cross-section: 4 mm², Width: 6 mm, Colour: Beige

Article number	Article name	GTIN (EAN)	Packaging unit
<u>17116.2</u>	SRK 4/2A SAS BG	4044211148980	80



Feed-through terminal, Screw connection, Mounting type: Mounting rail TS 35/7.5, Rated cross-section: 16 mm², Width: 10 mm, Colour: Black-yellow

Article number	Article name	GTIN (EAN)	Packaging unit
<u>17133.2</u>	SRK 10/2A/PE BKYE	4044211200725	100 ST



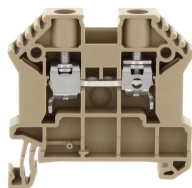
Feed-through terminal, Screw connection, Mounting type: Mounting rail TS 35/7.5, Rated cross-section: 16 mm², Width: 10 mm, Colour: Beige

Article number	Article name	GTIN (EAN)	Packaging unit
<u>87807.2</u>	SRK 10/2A Ex BG	4044211199807	100

Data sheet

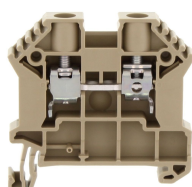
17200.8 SQIK 2,5-10 YE

##INVERSE##CONTA-CONNECT



Feed-through terminal, Screw connection, Mounting type: Mounting rail TS 35/7.5, Rated cross-section: 10 mm², Width: 8 mm, Colour: Beige

Article number	Article name	GTIN (EAN)	Packaging unit
<u>87805.2</u>	SRK 6/2A Ex BG	4044211199777	100



Feed-through terminal, Screw connection, Mounting type: Mounting rail TS 35/7.5, Rated cross-section: 10 mm², Width: 8 mm, Colour: Beige

Article number	Article name	GTIN (EAN)	Packaging unit
<u>87805.2</u>	SRK 6/2A Ex BG	4044211199777	100

##INVERSE##CONTA-CONNECT



Insulated cross-connector, No. of poles: 10, Mounting type: Plug in, Width: 79.1 mm, Rated cross-section: 6 mm², Colour: Yellow

Article number	Article name	GTIN (EAN)	Packaging unit
<u>17229.8</u>	SQI 6/10 YE	4044211148829	10

##INVERSE##CONTA-CONNECT



Insulated cross-connector, No. of poles: 7, Mounting type: Plug in, Width: 35.4 mm, Rated cross-section: 2.5 mm², Colour: Yellow

Article number	Article name	GTIN (EAN)	Packaging unit
<u>17206.8</u>	SQI 2,5/7 YE	4044211148591	20

##INVERSE##CONTA-CONNECT

Insulated cross-connector, No. of poles: 30, Mounting type: Plug in, Width: 240 mm,
Rated cross-section: 6 mm², Colour: Yellow



Article number	Article name	GTIN (EAN)	Packaging unit
<u>17230.8</u>	SQI 6/30 YE	4044211148836	5

##INVERSE##CONTA-CONNECT

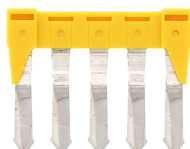
Insulated cross-connector, No. of poles: 3, Mounting type: Plug in, Width: 15 mm, Rated
cross-section: 2.5 mm², Colour: Yellow



Article number	Article name	GTIN (EAN)	Packaging unit
<u>17202.8</u>	SQI 2,5/3 YE	4044211148553	50

##INVERSE##CONTA-CONNECT

Insulated cross-connector, No. of poles: 5, Mounting type: Plug in, Width: 29.6 mm,
Rated cross-section: 4 mm², Colour: Yellow



Article number	Article name	GTIN (EAN)	Packaging unit
<u>17214.8</u>	SQI 4/5 YE	4044211148676	20

##INVERSE##CONTA-CONNECT

Insulated cross-connector, No. of poles: 4, Mounting type: Plug in, Width: 30.5 mm,
Rated cross-section: 6 mm², Colour: Yellow



Article number	Article name	GTIN (EAN)	Packaging unit
<u>17223.8</u>	SQI 6/4 YE	4044211148768	20

##INVERSE##CONTA-CONNECT



Insulated cross-connector, No. of poles: 6, Mounting type: Plug in, Width: 46.7 mm, Rated cross-section: 6 mm², Colour: Yellow

Article number	Article name	GTIN (EAN)	Packaging unit
<u>17225.8</u>	SQI 6/6 YE	4044211148782	20

##INVERSE##CONTA-CONNECT



Insulated cross-connector, No. of poles: 9, Mounting type: Plug in, Width: 71 mm, Rated cross-section: 6 mm², Colour: Yellow

Article number	Article name	GTIN (EAN)	Packaging unit
<u>17228.8</u>	SQI 6/9 YE	4044211148812	10

##INVERSE##CONTA-CONNECT



Insulated cross-connector, No. of poles: 4, Mounting type: Plug in, Width: 20.1 mm, Rated cross-section: 2.5 mm², Colour: Yellow

Article number	Article name	GTIN (EAN)	Packaging unit
<u>17203.8</u>	SQI 2,5/4 YE	4044211148560	20

##INVERSE##CONTA-CONNECT



Insulated cross-connector, No. of poles: 9, Mounting type: Plug in, Width: 45.6 mm, Rated cross-section: 2.5 mm², Colour: Yellow

Article number	Article name	GTIN (EAN)	Packaging unit
<u>17208.8</u>	SQI 2,5/9 YE	4044211148614	10

##INVERSE##CONTA-CONNECT

Data sheet

17200.8 SQUIK 2,5-10 YE



Insulated cross-connector, No. of poles: 30, Mounting type: Plug in, Width: 181.1 mm,
Rated cross-section: 4 mm², Colour: Yellow



Article number	Article name	GTIN (EAN)	Packaging unit
<u>17220.8</u>	SQI 4/30 YE	4044211148737	5