

## STRADELLA-8-HV-VSM

IESNA Type V (square) beam for wide areas lighting such as car parks. Variant with improved creepage distance for high voltage circuit designs.

## SPECIFICATION:

Dimensions	49.5 x 49.5 mm
Height	5.5 mm
Fastening	pin, screw
ROHS compliant	yes ⓘ

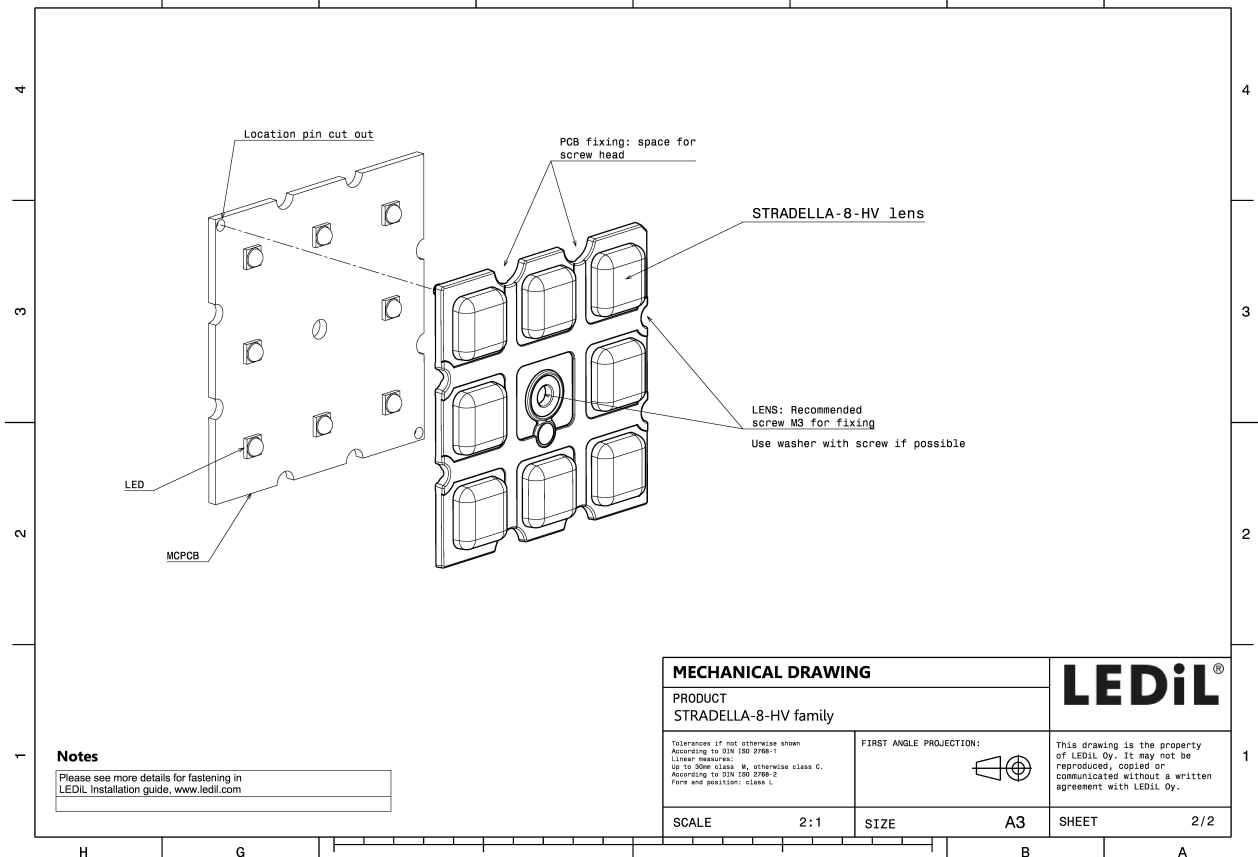
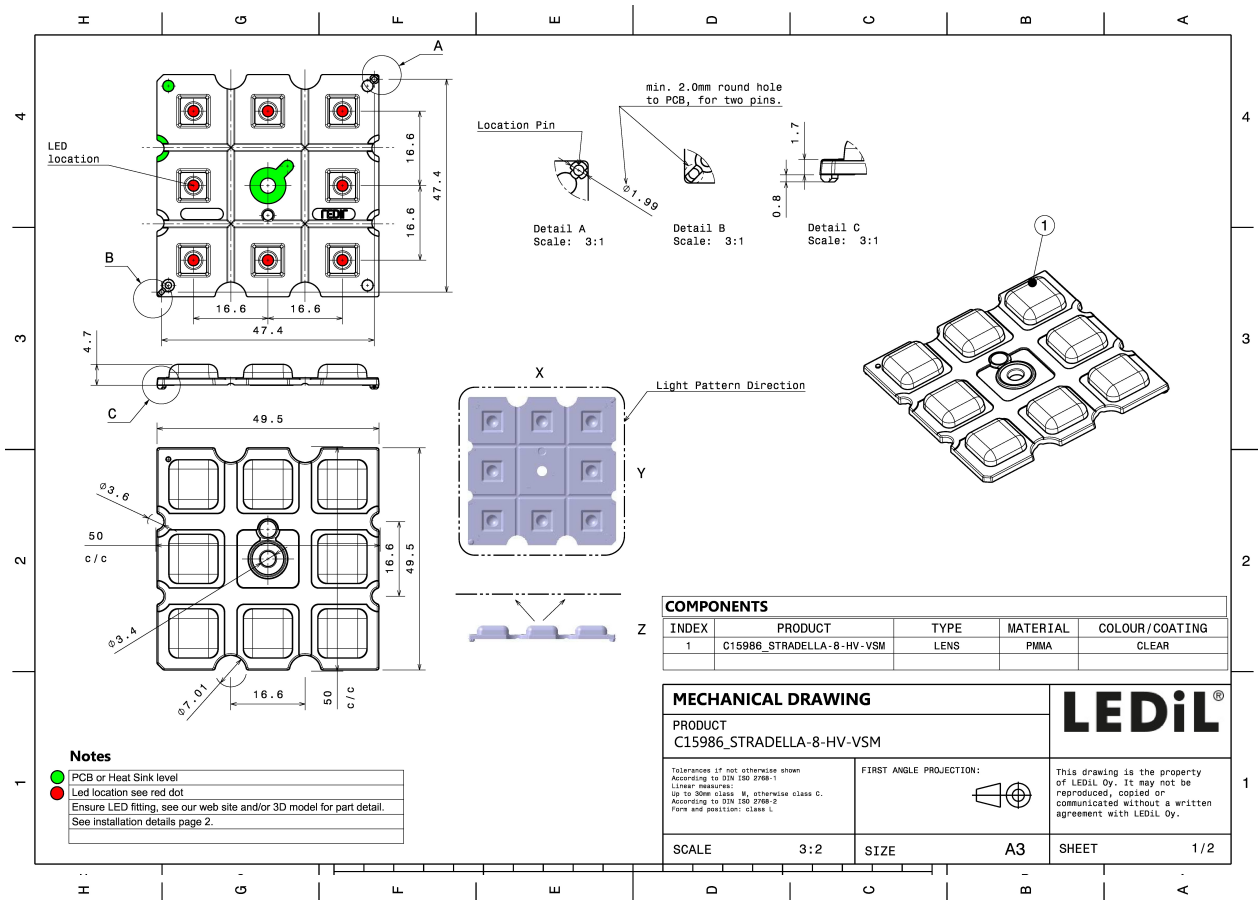


## MATERIALS:

Component	Type	Material	Colour	Finish
STRADELLA-8-HV-VSM	Multi-lens	PMMA	clear	

## ORDERING INFORMATION:

Component	Qty in box	MOQ	MPQ	Box weight (kg)
C15986_STRADELLA-8-HV-VSM	800	160	160	5.3
» Box size: 480 x 280 x 300 mm				

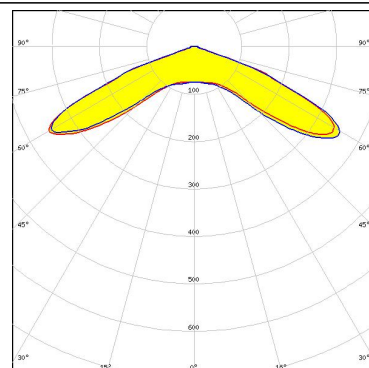


See also our general installation guide: [www.ledil.com/installation\\_guide](http://www.ledil.com/installation_guide)

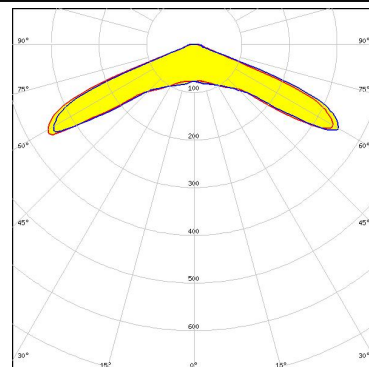
#### OPTICAL RESULTS (MEASURED):



LED J Series 3030  
FWHM / FWTM 136.0° / 144.0°  
Efficiency 98 %  
Peak intensity 0.5 cd/lm  
LEDs/each optic 1  
Light colour White  
Required components:



LED XD16  
FWHM / FWTM 136.0° / 144.0°  
Efficiency 0 %  
Peak intensity 94 cd/lm  
LEDs/each optic 1  
Light colour White  
Required components:



LED XT-E  
FWHM / FWTM 147.0° / 165.0°  
Efficiency 94 %  
Peak intensity 0.4 cd/lm  
LEDs/each optic 1  
Light colour White  
Required components:

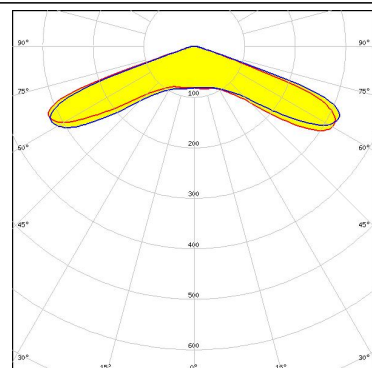


LED LUXEON 3030 2D (Round LES)  
FWHM / FWTM 137.0° / 143.0°  
Efficiency 94 %  
Peak intensity 0.5 cd/lm  
LEDs/each optic 1  
Light colour White  
Required components:

#### OPTICAL RESULTS (MEASURED):

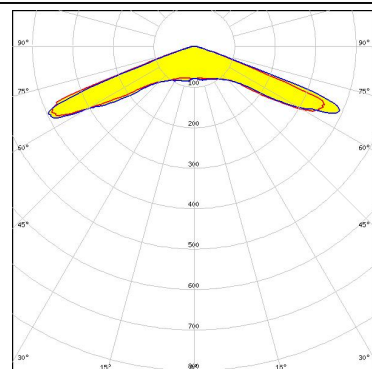
##### LUMILEDS

LED LUXEON V2  
FWHM / FWTM Asymmetric  
Efficiency 94 %  
Peak intensity 0.4 cd/lm  
LEDs/each optic 1  
Light colour White  
Required components:



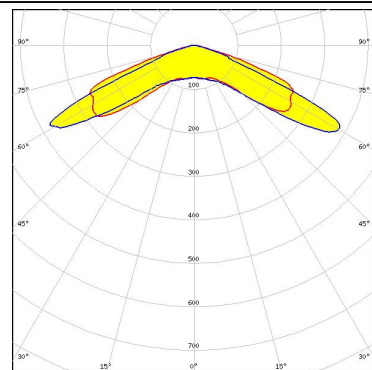
##### LUMINUS

LED SST-10-B130  
FWHM / FWTM 139.0° / 150.0°  
Efficiency 97 %  
Peak intensity 0.5 cd/lm  
LEDs/each optic 1  
Light colour Deep Red  
Required components:



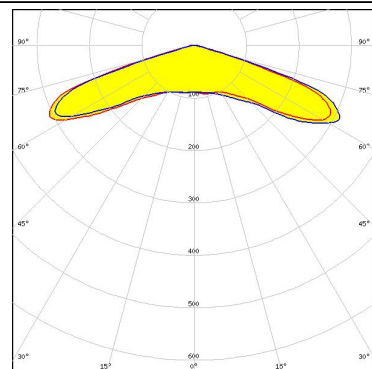
##### NICHIA

LED NF2W585AR  
FWHM / FWTM 140.0° / 156.0°  
Efficiency 94 %  
Peak intensity 0.4 cd/lm  
LEDs/each optic 1  
Light colour White  
Required components:



##### NICHIA

LED NVSW219D  
FWHM / FWTM 145.0° / 154.0°  
Efficiency 94 %  
Peak intensity 0.4 cd/lm  
LEDs/each optic 1  
Light colour White  
Required components:

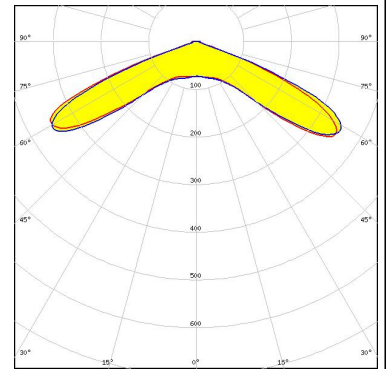


#### OPTICAL RESULTS (MEASURED):

##### OSRAM

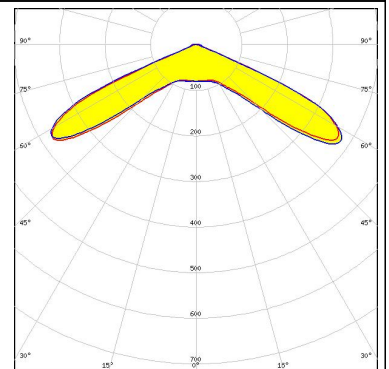
Opto Semiconductors

LED OSCONIQ S 3030 (QSLR31)  
FWHM / FWTM 136.0° / 143.0°  
Efficiency 94 %  
Peak intensity 0.5 cd/lm  
LEDs/each optic 1  
Light colour White  
Required components:



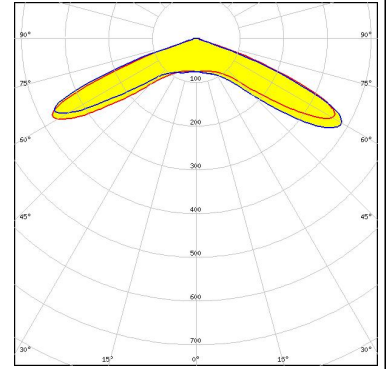
##### PHILIPS

LED Fortimo FastFlex LED 4x8up PR G5  
FWHM / FWTM 132.0° / 137.0°  
Efficiency 94 %  
Peak intensity 0.5 cd/lm  
LEDs/each optic 1  
Light colour White  
Required components:



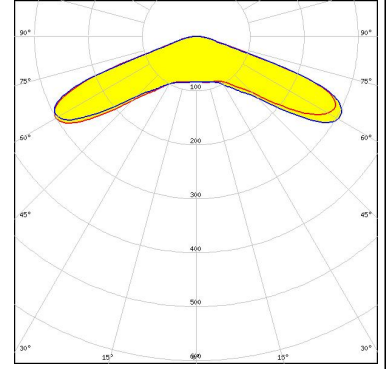
SEOUL SEMICONDUCTOR

LED SEOUL DC 3030C  
FWHM / FWTM Asymmetric  
Efficiency 94 %  
Peak intensity 0.5 cd/lm  
LEDs/each optic 1  
Light colour White  
Required components:



SEOUL SEMICONDUCTOR

LED Z5M3  
FWHM / FWTM 141.0° / 159.0°  
Efficiency 94 %  
Peak intensity 0.4 cd/lm  
LEDs/each optic 1  
Light colour White  
Required components:



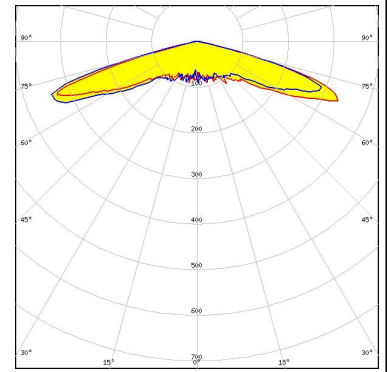
### OPTICAL RESULTS (MEASURED):



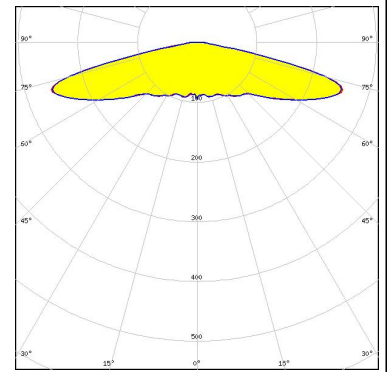
#### OPTICAL RESULTS (SIMULATED):



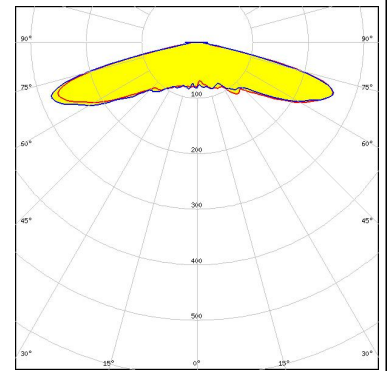
LED XP-G2  
FWHM / FWTM 148.0° / 156.0°  
Efficiency 94 %  
Peak intensity 0.5 cd/lm  
LEDs/each optic 1  
Light colour White  
Required components:



LED XP-G2 HE  
FWHM / FWTM 156.0° / 166.0°  
Efficiency 93 %  
Peak intensity 0.3 cd/lm  
LEDs/each optic 1  
Light colour White  
Required components:



LED XP-G3  
FWHM / FWTM 152.0° / 162.0°  
Efficiency 94 %  
Peak intensity 0.4 cd/lm  
LEDs/each optic 1  
Light colour White  
Required components:

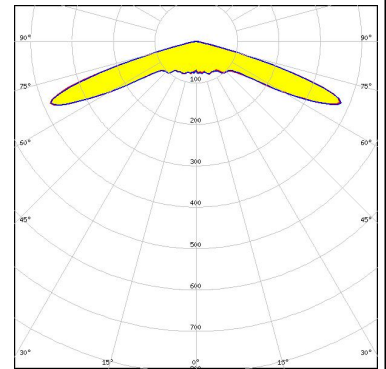


LED LUXEON 3535 2D  
FWHM / FWTM 143.0° / 155.0°  
Efficiency 94 %  
Peak intensity 0.5 cd/lm  
LEDs/each optic 1  
Light colour White  
Required components:

#### OPTICAL RESULTS (SIMULATED):

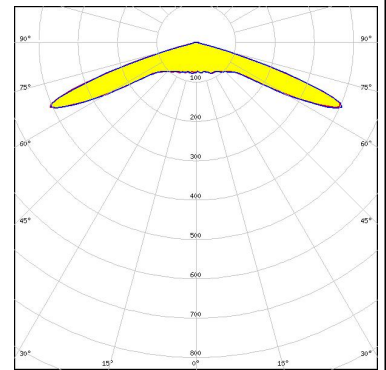
##### LUMILEDS

LED LUXEON CZ  
FWHM / FWTM 146.0° / 154.0°  
Efficiency 96 %  
Peak intensity 0.6 cd/lm  
LEDs/each optic 1  
Light colour White  
Required components:



##### LUMILEDS

LED LUXEON CZ  
FWHM / FWTM 144.0° / 150.0°  
Efficiency 96 %  
Peak intensity 0.6 cd/lm  
LEDs/each optic 1  
Light colour Blue  
Required components:



##### LUMILEDS

LED LUXEON FlipChip White 10  
FWHM / FWTM 136.0° / 149.0°  
Efficiency 89 %  
Peak intensity 0.4 cd/lm  
LEDs/each optic 1  
Light colour White  
Required components:

##### NICHIA

LED NF2x757D  
FWHM / FWTM 140.0° / 146.0°  
Efficiency 94 %  
Peak intensity 0.6 cd/lm  
LEDs/each optic 1  
Light colour White  
Required components:

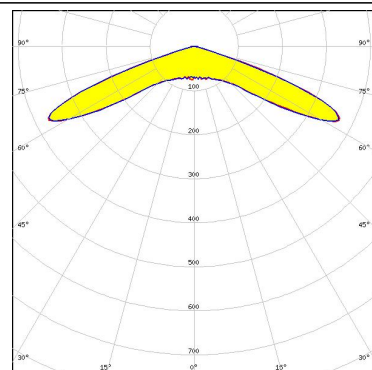


#### OPTICAL RESULTS (SIMULATED):

##### OSRAM

Opto Semiconductors

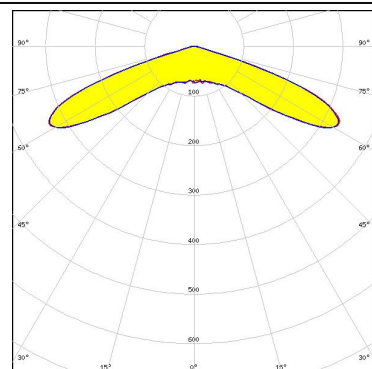
LED OSCONIQ C 2424  
FWHM / FWTM 140.0° / 148.0°  
Efficiency 96 %  
Peak intensity 0.5 cd/lm  
LEDs/each optic 1  
Light colour White  
Required components:



##### OSRAM

Opto Semiconductors

LED OSCONIQ C 3030  
FWHM / FWTM 142.0° / 150.0°  
Efficiency 96 %  
Peak intensity 0.4 cd/lm  
LEDs/each optic 1  
Light colour White  
Required components:

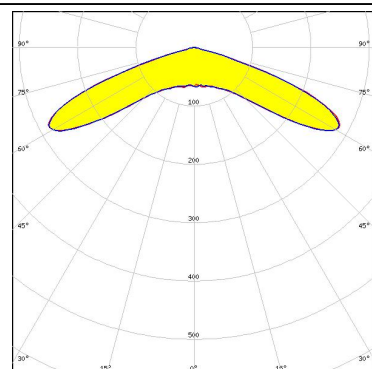


##### OSRAM

Opto Semiconductors

LED OSCONIQ C 3030  
FWHM / FWTM 142.0° / 150.0°  
Efficiency 80 %  
Peak intensity 0.4 cd/lm  
LEDs/each optic 1  
Light colour White  
Required components:

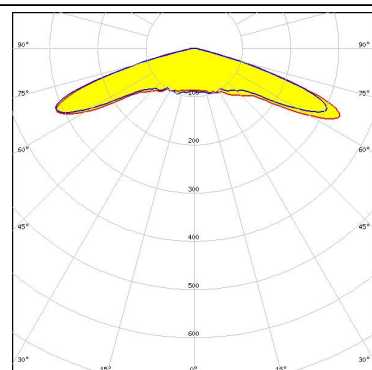
Protective plate, glass



##### OSRAM

Opto Semiconductors

LED OSCONIQ P 3030  
FWHM / FWTM 146.0° / 157.0°  
Efficiency 96 %  
Peak intensity 0.5 cd/lm  
LEDs/each optic 1  
Light colour White  
Required components:

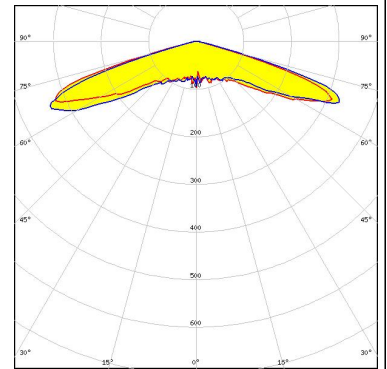


#### OPTICAL RESULTS (SIMULATED):

##### OSRAM

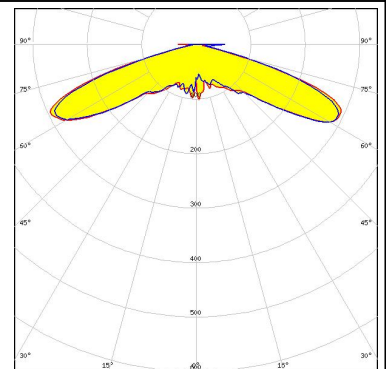
Opto Semiconductors

LED OSLON Square CSSRM2/CSSRM3  
FWHM / FWTM 144.0° / 156.0°  
Efficiency 94 %  
Peak intensity 0.5 cd/lm  
LEDs/each optic 1  
Light colour White  
Required components:



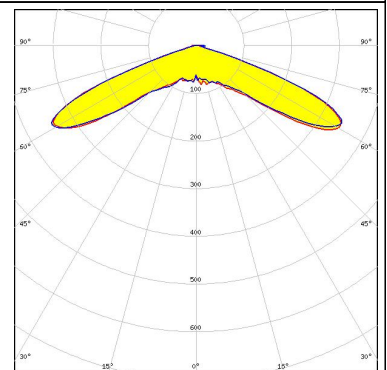
##### SAMSUNG

LED LH181A  
FWHM / FWTM 150.0° / 160.0°  
Efficiency 94 %  
Peak intensity 0.4 cd/lm  
LEDs/each optic 1  
Light colour White  
Required components:



##### SAMSUNG

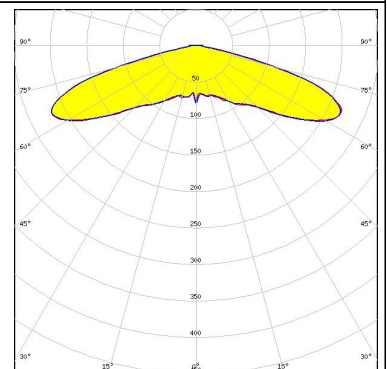
LED LH181B  
FWHM / FWTM 140.0° / 146.0°  
Efficiency 94 %  
Peak intensity 0.5 cd/lm  
LEDs/each optic 1  
Light colour White  
Required components:



##### SAMSUNG

LED LH351C  
FWHM / FWTM 150.0° / 160.0°  
Efficiency 77 %  
Peak intensity 0.3 cd/lm  
LEDs/each optic 1  
Light colour White  
Required components:

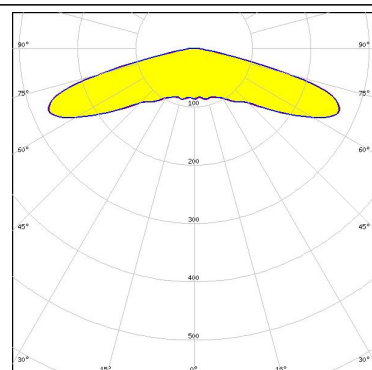
Protective plate, glass



#### OPTICAL RESULTS (SIMULATED):

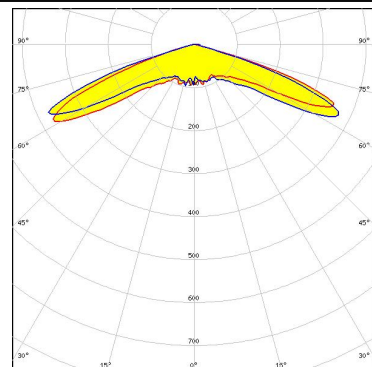
#### SAMSUNG

LED LH351C  
 FWHM / FWTM 152.0° / 162.0°  
 Efficiency 94 %  
 Peak intensity 0.3 cd/lm  
 LEDs/each optic 1  
 Light colour White  
 Required components:



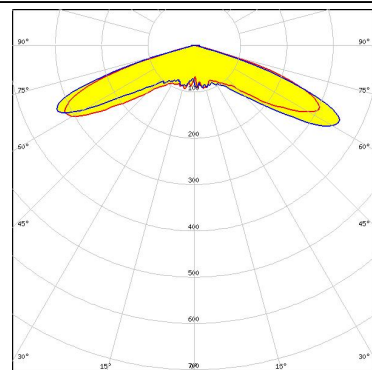
SEOUL SEMICONDUCTOR

LED SEOUL 3030  
 FWHM / FWTM Asymmetric  
 Efficiency 99 %  
 Peak intensity 0.6 cd/lm  
 LEDs/each optic 1  
 Light colour White  
 Required components:



SEOUL SEMICONDUCTOR

LED SEOUL 3030  
 FWHM / FWTM Asymmetric  
 Efficiency 99 %  
 Peak intensity 0.5 cd/lm  
 LEDs/each optic 1  
 Light colour White  
 Required components:



### GENERAL INFORMATION:

NOTE: The typical beam angle will be changed by different color, chip size and chip position tolerance. The typical total beam angle is the full angle measured where the luminous intensity is half of the peak value.

### MATERIALS:

As part of our continuous research and improvement processes, and to ensure the best possible quality and availability of our products, LEDiL reserves the right to change material grades without notice.

### PRODUCT DATA USER AGREEMENT AND DISCLAIMER:

The measured data in the provided downloadable LEDiL Product Datasheets and Mechanical 2D-Drawings is rounded and provided as reference for planning. LEDiL Oy's optical specifications have been verified by conducting performance testing of the products in accordance with the company's quality system. The reported data are averaged results of multiple measurements with typical variation. LEDiL Oy reserves the right to without prior notification make changes and improvements to its products.

LEDiL Oy assumes neither warranty, nor guarantee nor any other liability of any kind for the contents and correctness of the provided data. The provided data has been generated with highest diligence but the provided data may in reality not represent the complete possible variation range of all intrinsic parameters. Therefore, in certain cases a deviation from the provided data could occur.

LEDiL Oy reserves the right to undertake technical changes of its products without further notification which could lead to changes in the provided data. LEDiL Oy assumes no liability of any kind for the possible deviation from any provided data or any other damage resulting from the usage of the provided data.

The user agrees to this disclaimer and user agreement with the download or usage of the provided files.

#### LEDiL Oy

Joensuunkatu 13  
FI-24240 SALO  
Finland

#### LEDiL Inc.

228 West Page Street  
Suite D  
Sycamore IL 60178  
USA

#### Ledil Optics Technology (Shenzhen) Co., Ltd.

# 405 , Block B  
Casic Motor Building  
Shenzhen 518057  
P.R.CHINA

#### Local sales and technical support

[www.ledil.com/  
where\\_to\\_buy](http://www.ledil.com/where_to_buy)

#### Shipping locations

Salo, Finland  
Hong Kong, China

#### Distribution Partners

[www.ledil.com/  
where\\_to\\_buy](http://www.ledil.com/where_to_buy)