



ACUCT REVENUE GRADE

Split-Core, High Accuracy

The Revenue Grade High Accuracy Split-Core Current Transformers are designed to convert an AC operating current into a low voltage AC millivolt signal for use with microprocessor-based circuits that require maximum accuracy and precision. These compact and light-weight split-core current transformers are designed for installation on branch circuits within the electrical panel. The current transformer features a sturdy latch that locks the split-core CT in place using a press-open mechanism for quick installations without disconnecting cables. Split-Core CTs come standard unterminated stripped and tinned lead wires for easy connection to any of the Single or 3 Phase ACI power meter. CT models listed here are compatible with the ACI KW350-P1-D-S-SC, KW320-P1-D-W-SC-XX, KW320-P1-D-W-SC-PC, KW1850-P1-D-W, and KW1850-P1-D-S Power Meters where typical power measurements are required. For best accuracy, CTs should be selected based upon the size of the conductors being monitored by selecting the proper window

size and referencing the expected maximum and minimum currents for the targeted application. The acceptable Measurement Current Range is referenced in the ordering grid table. Please contact ACI for more information regarding the Split-Core Current Transformers.

Applications: Tenant Billing, Energy and Demand Metering, Load Surveys, LEED/Green Projects, ROI / Project Justification

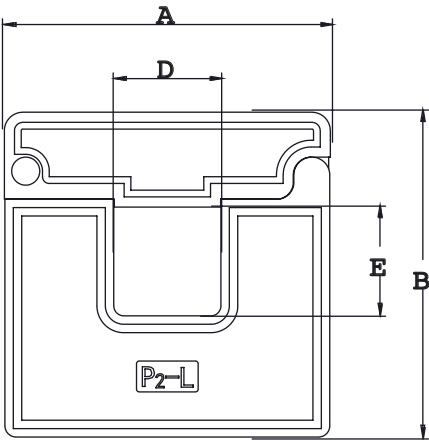
The Split Core High Accuracy mV Output Current Transformers are covered by ACI's Five (5) Year Limited Warranty. The warranty can be found in the front of ACI's Sensors & Transmitters catalog, as well as on ACI's web site, www.workaci.com.

PRODUCT SPECIFICATIONS

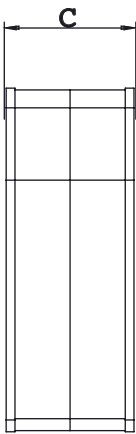
Monitored Current Type:	AC Current
Maximum Working Voltage:	600 VAC, Category III
Core Style:	Hinged Split-Core
Rated Output:	333mV @ 50/100/150/200/250/300/400/600/800/1000/2000/4000 Amps (see ordering grid)
Operating Frequency Range:	50/60 Hz
Withstand Voltage:	5,000VAC
Sensor Amperage Range:	See Ordering Grid
Accuracy1:	0.5s Class IEC 60044-1
Operating Temperature Range:	5 to 149°F (-15 to 60°C)
Storage Temperature Range:	-40 to 185°F (-40 to 85°C)
Operating / Storage Humidity Range:	5 to 95%, non-condensing
Maximum Elevation:	9,842 ft (3 Kilometers)
Case Material / Flammability Rating:	Square Pressed / UL 94V-0
Wiring Connections:	Stripped and Tinned Lead Wires
Lead Wire Colors:	White = Positive (+) Black = Negative (-)
Wire Size:	22 AWG (0.32 mm ²), UL 1015
Lead Length:	8 ft (2.5m)
Agency Approvals:	UL2808, 61010-1 and CSA 22.2
Product Weight:	AcuCT-075R - 0.4lbs (0.18kg) AcuCT-100R - 0.4lbs (0.18kg) AcuCT-125R - 0.4lbs (0.18kg) AcuCT-200R - 1.2lbs (0.54kg) AcuCT-3135R - 3.0lbs (1.36kg) AcuCT-4161R - 5.8lbs (2.63kg) AcuCT-5170R - 6.3lbs (2.85kg)
Product Dimensions (L x W x H):	AcuCT-075R - 2.3" (58.00 mm) x 2.3" (58.00 mm) x 0.9" (22.00 mm) AcuCT-100R - 2.6" (65.00 mm) x 2.6" (65.00 mm) x 0.9" (22.00 mm) AcuCT-125R - 3.2" (82.00 mm) x 3.2" (82.00 mm) x 0.9" (22.00 mm) AcuCT-200R - 4.4" (111.00 mm) x 4.4" (111.00 mm) x 1.25" (32.00 mm) AcuCT-3135R - 5.7" (144.00 mm) x 6.1" (154.00 mm) x 1.25" (32.00 mm) AcuCT-4161R - 7.3" (185.00 mm) x 9.3" (235.00 mm) x 1.8" (45.00 mm) AcuCT-5170R - 8.3" (210.00 mm) x 10.2" (260.00 mm) x 1.8" (45.00 mm)



DIMENSIONAL DRAWING



FRONT VIEW



SIDE VIEW

TYPE SELECTION

Model #	A	B	C	D	E
AcuCT-075R	2.28" (58 mm)	2.28" (58 mm)	0.87" (22 mm)	0.77" (19.5 mm)	0.77" (19.5 mm)
AcuCT-100R	2.56" (65 mm)	2.56" (65 mm)	0.87" (22 mm)	0.98" (25 mm)	0.98" (25 mm)
AcuCT-0125R	3.23" (82 mm)	3.23" (82 mm)	0.87" (22 mm)	1.26" (32 mm)	1.26" (32 mm)
AcuCT-200R	4.37" (111 mm)	4.37" (111 mm)	1.26" (32 mm)	2.01" (51 mm)	2.01" (51 mm)
AcuCT-3135R	5.67" (144 mm)	6.06" (154 mm)	1.26" (32 mm)	3.15" (80 mm)	3.54" (90 mm)
AcuCT-4161R	7.28" (185 mm)	9.25" (235 mm)	1.77" (45 mm)	4.13" (105 mm)	6.10" (155 mm)
AcuCT-5170R	8.27" (210 mm)	10.24" (260 mm)	1.77" (45 mm)	5.12" (130 mm)	7.09" (180 mm)



STANDARD ORDERING

Model #	Item #	Rated Current	Window Size	Output Signal (At Rated Current)
AcuCT-075R-50:333	148213	50A	0.75" (19.05 mm)	333 mV @ 50A
AcuCT-075R-100:333	148214	100A	0.75" (19.05 mm)	333 mV @ 100A
AcuCT-075R-150:333	148215	150A	0.75" (19.05 mm)	333 mV @ 150A
AcuCT-100R-100:333	148216	100A	0.75" (19.70 mm)	333 mV @ 100A
AcuCT-100R-200:333	148217	200A	1.00" (25.40 mm)	333 mV @ 200A
AcuCT-100R-250:333	148218	250A	1.00" (25.40 mm)	333 mV @ 250A
AcuCT-125R-100:333	148220	100A	1.25" (31.75 mm)	333 mV @ 100A
AcuCT-125R-200:333	148221	200A	1.25" (31.75 mm)	333 mV @ 200A
AcuCT-125R-300:333	148219	300A	1.25" (31.75 mm)	333 mV @ 300A
AcuCT-125R-400:333	148222	400A	1.25" (31.75 mm)	333 mV @ 400A
AcuCT-200R-400:333	148223	400A	2.00" (50.80 mm)	333 mV @ 400A
AcuCT-200R-600:333	148224	600A	2.00" (50.80 mm)	333 mV @ 600A
AcuCT-200R-800:333	148225	800A	2.00" (50.80 mm)	333 mV @ 800A
AcuCT-200R-1000:333	148226	1000A	2.00" (50.80 mm)	333 mV @ 1000A
AcuCT-3135R-1000:333	148234	1000A	3.1" (78.74mm) X 3.5" (88.90mm)	333 mV @ 1000A
AcuCT-4161R-2000:333	148236	2000A	4.1" (104.14mm) X 6.1" (154.94mm)	333 mV @ 2000A
AcuCT-5170R-4000:333	148237	4000A	5.1" (129.54mm) X 7.0" (177.80mm)	333 mV @ 4000A

