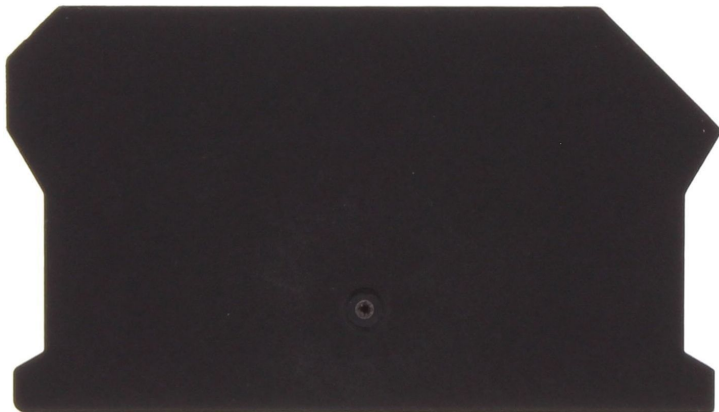


Data sheet

17258.4 SAP SSIK 4/6 BK



End plate, Width: 1.5 mm, Colour: Black

RAL: 9005

Business data

| | |
|--------------------------------------------|-----------------|
| Article number | 17258.4 |
| Article name | SAP SSIK 4/6 BK |
| GTIN (EAN) | 4044211179830 |
| Packaging unit | 20 |
| Quantity unit | PC |
| Weight per piece (not including packaging) | 3 g |
| Weight per piece (including packaging) | 3.25 g |
| Unit of weight | G |
| Customs number | 85389099 |
| Country of origin | DE |
| Product description | End plate |
| Colour | Black |

Technical data

Dimensions

| | |
|--------|--------|
| Length | 58 mm |
| Width | 1.5 mm |
| Height | 33 mm |

Materials

| | |
|---------------------------|---------------|
| Material | Polyamide 6.6 |
| Glass-fibre reinforced | ✓ |
| Flammability class UL 94 | V-0 |
| Working temperature, min. | -40 °C |
| Working temperature, max. | 140 °C |

Further technical data

| | |
|-----------------------|---|
| Designed as end plate | ✓ |
| Snap-on available | ✓ |

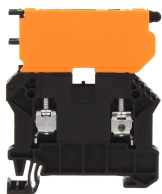
Environmental Product Compliance

| | |
|--------------------------------|------------|
| REACH Conform | yes |
| REACH Reference date | 2023-06-14 |
| REACH Candidate Substance Note | No |
| RoHS Conform | yes |

Media

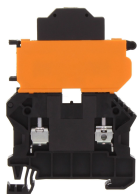
Accessories

##INVERSE##CONTA-CONNECT



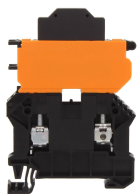
Fuse-disconnect terminal, Screw connection, Mounting type: Mounting rail TS 35/7.5,
Rated cross-section: 6 mm², Width: 8.1 mm, Colour: Black

| Article number | Article name | GTIN (EAN) | Packaging unit |
|----------------|--------------|---------------|----------------|
| <u>17151.4</u> | SSIK 6/2A BK | 4044211188993 | 50 ST |



Fuse-disconnect terminal, Screw connection, Mounting type: Mounting rail TS 35/7.5,
Rated cross-section: 4 mm², Width: 6.1 mm, Colour: Black

| Article number | Article name | GTIN (EAN) | Packaging unit |
|----------------|-------------------------------|---------------|----------------|
| <u>17172.4</u> | SSIK 4/2A/LED 30-60V AC/DC BK | 4044211180447 | 25 ST |



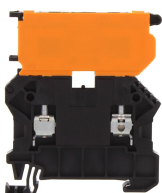
Fuse-disconnect terminal, Screw connection, Mounting type: Mounting rail TS 35/7.5,
Rated cross-section: 6 mm², Width: 8.1 mm, Colour: Black

| Article number | Article name | GTIN (EAN) | Packaging unit |
|----------------|-------------------------------|---------------|----------------|
| <u>17176.4</u> | SSIK 6/2A/LED 30-60V AC/DC BK | 4044211188931 | 50 ST |



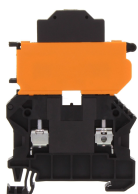
Fuse-disconnect terminal, Screw connection, Mounting type: Mounting rail TS 35/7.5,
Rated cross-section: 6 mm², Width: 8.1 mm, Colour: Black

| Article number | Article name | GTIN (EAN) | Packaging unit |
|----------------|-----------------------------|---------------|----------------|
| <u>17178.4</u> | SSIK 6/2A/LED 500V AC/DC BK | 4044211188948 | 50 ST |



Fuse-disconnect terminal, Screw connection, Mounting type: Mounting rail TS 35/7.5,
Rated cross-section: 4 mm², Width: 6.1 mm, Colour: Black

| Article number | Article name | GTIN (EAN) | Packaging unit |
|----------------|--------------|---------------|----------------|
| <u>17150.4</u> | SSIK 4/2A BK | 4044211179816 | 50 ST |

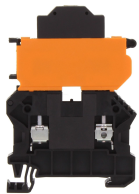


Fuse-disconnect terminal, Screw connection, Mounting type: Mounting rail TS 35/7.5,
Rated cross-section: 4 mm², Width: 6.1 mm, Colour: Black

| Article number | Article name | GTIN (EAN) | Packaging unit |
|----------------|-------------------------------|---------------|----------------|
| <u>17171.4</u> | SSIK 4/2A/LED 12-30V AC/DC BK | 4044211180430 | 25 ST |

17258.4 SAP SSIK 4/6 BK

##INVERSE##CONTA-CONNECT



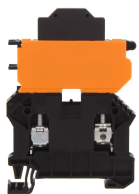
Fuse-disconnect terminal, Screw connection, Mounting type: Mounting rail TS 35/7.5, Rated cross-section: 4 mm², Width: 6.1 mm, Colour: Black

| Article number | Article name | GTIN (EAN) | Packaging unit |
|----------------|---------------------------------|---------------|----------------|
| <u>17173.4</u> | SSIK 4/2A/LED 110-250V AC/DC BK | 4044211180454 | 25 ST |



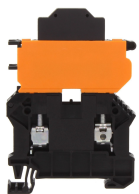
Fuse-disconnect terminal, Screw connection, Mounting type: Mounting rail TS 35/7.5, Rated cross-section: 4 mm², Width: 6.1 mm, Colour: Black

| Article number | Article name | GTIN (EAN) | Packaging unit |
|----------------|-----------------------------|---------------|----------------|
| <u>17174.4</u> | SSIK 4/2A/LED 500V AC/DC BK | 4044211180461 | 25 ST |



Fuse-disconnect terminal, Screw connection, Mounting type: Mounting rail TS 35/7.5, Rated cross-section: 6 mm², Width: 8.1 mm, Colour: Black

| Article number | Article name | GTIN (EAN) | Packaging unit |
|----------------|-------------------------------|---------------|----------------|
| <u>17175.4</u> | SSIK 6/2A/LED 12-30V AC/DC BK | 4044211188924 | 50 ST |



Fuse-disconnect terminal, Screw connection, Mounting type: Mounting rail TS 35/7.5, Rated cross-section: 6 mm², Width: 8.1 mm, Colour: Black

| Article number | Article name | GTIN (EAN) | Packaging unit |
|----------------|---------------------------------|---------------|----------------|
| <u>17177.4</u> | SSIK 6/2A/LED 110-250V AC/DC BK | 4044211188955 | 50 ST |