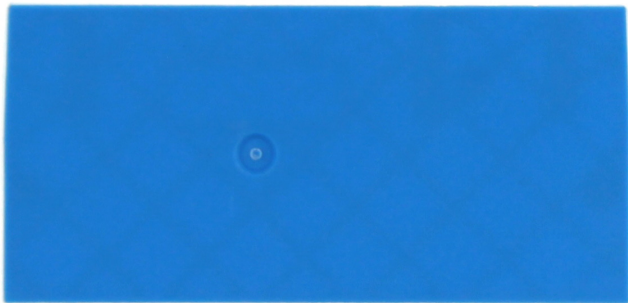


# Data sheet

## 27104.5 PAP 2,5/3A BU



End plate, Width: 1.5 mm, Colour: Blue

**RAL:** Ähnlich 5005

### Business data

Article number	<u>27104.5</u>
Article name	PAP 2,5/3A BU
GTIN (EAN)	4044211224486
Packaging unit	20
Quantity unit	PC
Weight per piece (not including packaging)	1.98 g
Weight per piece (including packaging)	2.2 g
Unit of weight	G
Customs number	85389099
Country of origin	DE
Prio-Article	27104.6
Product description	End plate

# Data sheet

## 27104.5 PAP 2,5/3A BU



### Technical data

#### Dimensions

Length	60.4 mm
Width	1.5 mm
Height	28.7 mm

#### Materials

Material	Polyamide 6.6
Flammability class UL 94	V-0
Working temperature, min.	-40 °C
Working temperature, max.	120 °C

#### Environmental Product Compliance

REACH Candidate Substance Note	No
--------------------------------	----

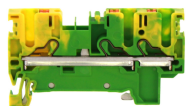
---

**Media**

---

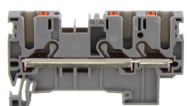
### Accessories

#### Terminal blocks



Protective earth terminal, Push-in connection, Mounting type: Mounting rail TS 35/7.5,  
Rated cross-section: 2.5 mm², Width: 5.1 mm, Colour: Green-yellow

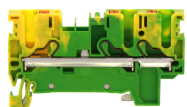
Article number	Article name	GTIN (EAN)	Packaging unit
<u>27009.2</u>	PSL 2,5/3A GNYE	4044211223847	50 ST



Feed-through terminal, Push-in connection, Mounting type: Mounting rail TS 35/7.5,  
Rated cross-section: 2.5 mm², Width: 5.1 mm, Colour: Grey

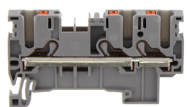
Article number	Article name	GTIN (EAN)	Packaging unit
<u>27008.6</u>	PRK 2,5/3A GR	4044211223830	50

#### ##INVERSE##CONTA-CONNECT



Protective earth terminal, Push-in connection, Mounting type: Mounting rail TS 35/7.5,  
Rated cross-section: 2.5 mm², Width: 5.1 mm, Colour: Green-yellow

Article number	Article name	GTIN (EAN)	Packaging unit
<u>27009.2</u>	PSL 2,5/3A GNYE	4044211223847	50 ST



Feed-through terminal, Push-in connection, Mounting type: Mounting rail TS 35/7.5,  
Rated cross-section: 2.5 mm², Width: 5.1 mm, Colour: Grey

Article number	Article name	GTIN (EAN)	Packaging unit
<u>27008.6</u>	PRK 2,5/3A GR	4044211223830	50