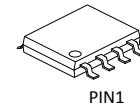




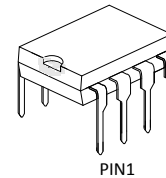
General Description

The MC33063ADR2G is a monolithic control circuit containing the primary functions required for DC-to-DC converters. This device consists of an internal temperature compensated reference (1.25V), comparator, controlled duty cycle oscillator with an active current limit circuit, driver and high current output switch. The IC is specifically designed to be used in Step-Down and Step-Up and Voltage-Inverting applications with a minimum number of external components.

The MC33063ADR2G is available in DIP8 and SOP-8 package.



SOP-8



DIP-8

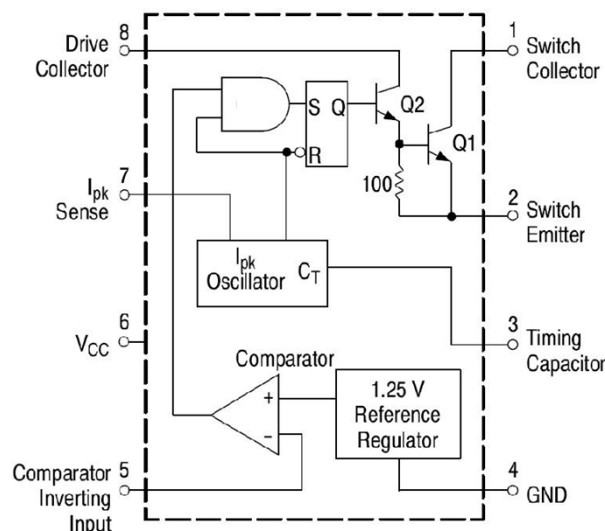
Features

- Operation from 3.0V to 40V Input
- Low Standby Current
- Current Limiting
- Output Switch Current to 1.5A
- Output Voltage Adjustable
- Frequency Operation to 100kHz
- Precision 2% Reference

Applications

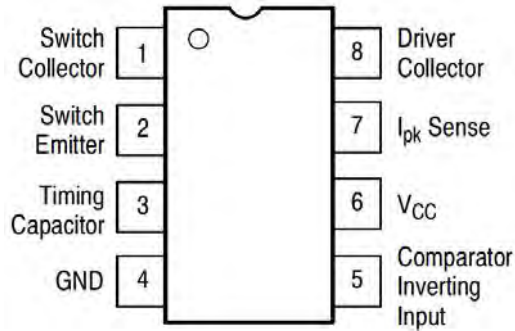
- Battery Chargers
- NICs / Switches / Hubs
- ADSL Modems
- Negative Voltage Power Supplies

Functional Block Diagram





Pin Configuration



Pin Description

Pin Number	Pin Name	Function Description	Pin Number	Pin Name	Function Description
1	SC	Switch collector	5	FB	Comparator inverting input
2	SE	Switch emitter	6	V _{CC}	Input voltage
3	CT	Timing capacitor	7	I _{pk}	I _{pk} sense
4	GND	Ground	8	DC	Drive collector

Absolute Maximum Ratings (Ta=25°C)

Parameter Name		Symbol	Value	Unit
Power Supply Voltage		V _{CC}	40	V
Comparator Input Voltage Range		V _{IR}	-0.3~40	V
Switch Collector Voltage		V _{C(switch)}	40	V
Switch Emitter Voltage (V _{Pin1} =40V)		V _{E(switch)}	40	V
Switch Collector to Emitter Voltage		V _{CE(switch)}	40	V
Driver Collector Voltage		V _{C(drive)}	40	V
Driver Collector Current		I _{C(drive)}	100	mA
Switch Current		I _{sw}	1.5	A
Power Dissipation	DIP-8	P _D	1.25	W
	SOP-8		625	mW
Operating Ambient Temperature Range		T _a	-0~70	°C
Storage Temperature Range		T _{stg}	-65~150	°C

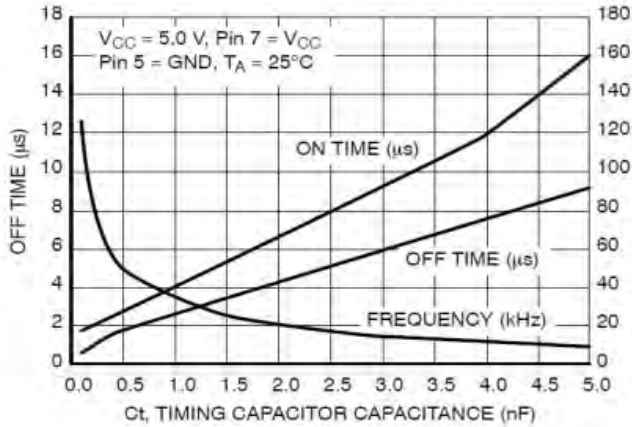


Electrical Characteristics (Unless otherwise noted, $V_{CC}=5.0V$, $T_a=0\sim 70^{\circ}C$)

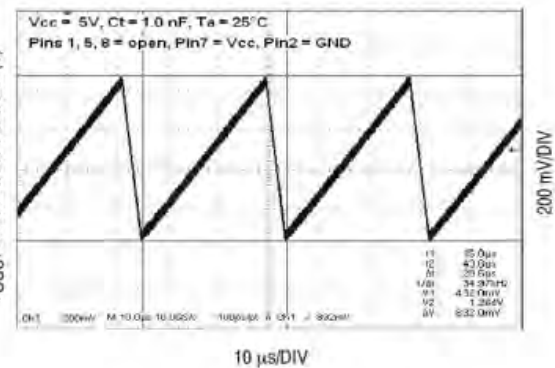
Parameter Name	Symbol	Min	Typ	Max	Unit
OSCILLATOR					
Frequency ($V_{pin5}=0V, CT=1.0nF, T_a=25^{\circ}C$)	fosc	24	33	42	kHz
Charge Current ($V_{CC}=5.0\sim 40V, T_a=25^{\circ}C$)	Ichg	24	35	42	μA
Discharge Current ($V_{CC}=5.0\sim 40V, T_a=25^{\circ}C$)	Idischg	140	220	260	μA
Discharge to Charge Current Ratio (Pin7 to V_{CC} , $T_a=25^{\circ}C$)	Idischg/Ichg	5.2	6.5	7.5	
Current limit Sense Voltage (Ichg=Idischg, $T_a=25^{\circ}C$)	Vipk(sense)	250	300	350	mA
OUTPUT SWITCH					
Saturation Voltage, Darlington Connection (ISW=1.0A, Pins 1,8 Connected)	$V_{CE(sat)}$		1.0	1.3	V
Saturation Voltage, Darlington Connection (ISW=1.0A, Rpin 8=82 Ω to V_{CC} , Forced $\beta \approx 20$)	$V_{CE(sat)}$		0.45	0.7	V
DC Current Gain (ISW=1.0A, $V_{CE}=5.0V, T_a=25^{\circ}C$)	hFE	50	75		
Collector Off-State Current ($V_{CE}=40V$)	Ic(off)		0.01	100	μA
COMPARATOR					
Threshold Voltage ($T_a=25^{\circ}C$)	Vth	1.225	1.25	1.275	V
Threshold Voltage ($T_a=0\sim 70^{\circ}C$)		1.21		1.29	
Threshold Voltage Line Regulation ($V_{CC}=3.0\sim 40V$)	Regline		1.4	5.0	mV
Input Bias Current ($V_{in}=0V$)	I _B		-20	-400	nA
TOTAL DEVICE					
Supply Current ($V_{CC}=5.0\sim 40V, CT=1.0nF$, Pin7= V_{CC} , $V_{pin5}>V_{th}$, pin2=Gnd, Remaining Pins Open)	I _{CC}			4.0	mA



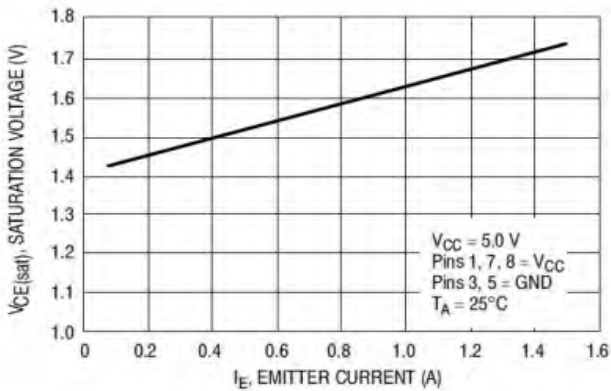
Characteristics Curves



Oscillator Frequency

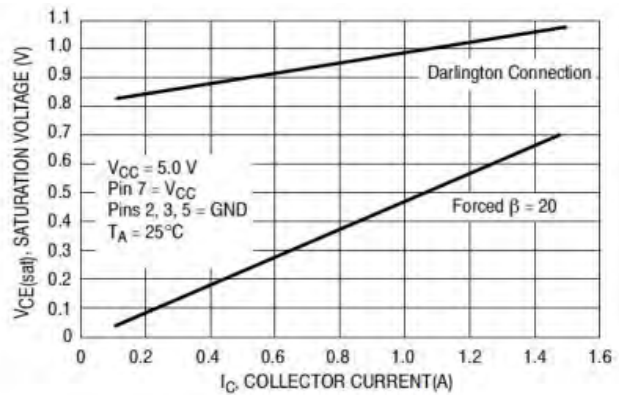


Timing Capacitor Waveform



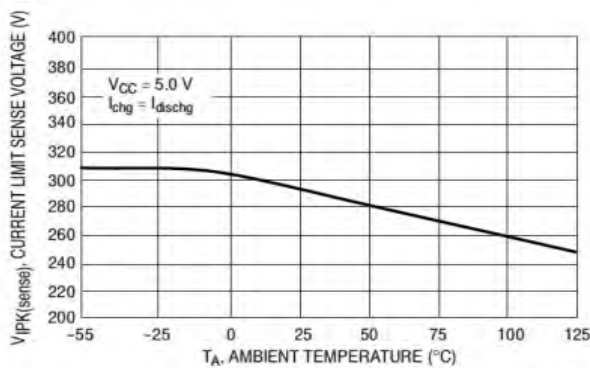
Emitter Follower Configuration Output

Saturation Voltage Versus Emitter Current

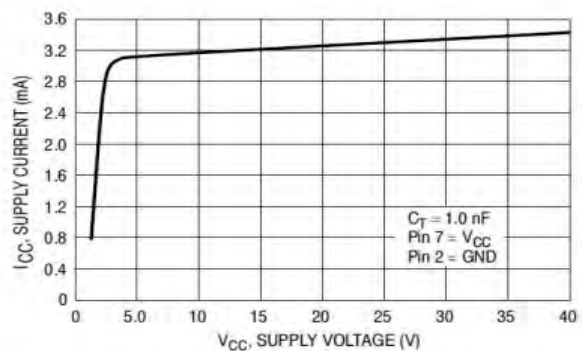


Common Emitter Configuration Output

Switch Saturation Voltage Versus Collector Current



Current Limit Sense Voltage Versus Temperature

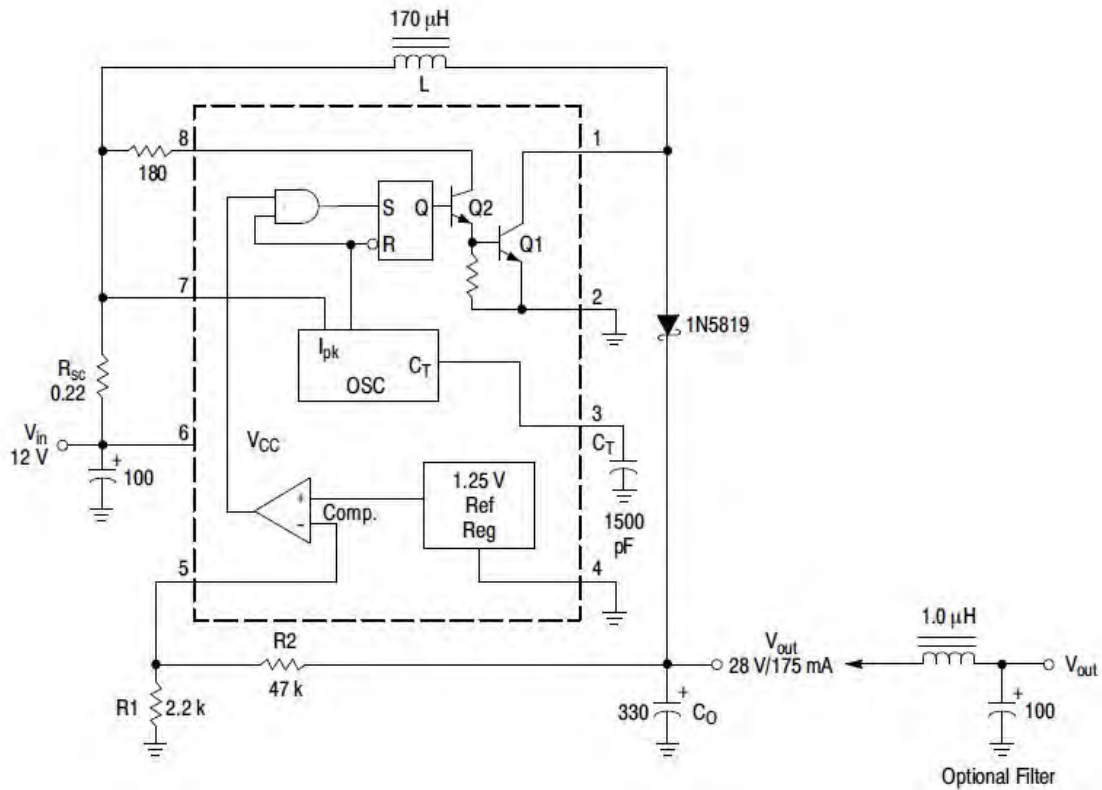


Standby Supply Current Versus Supply Voltage



Typical Application

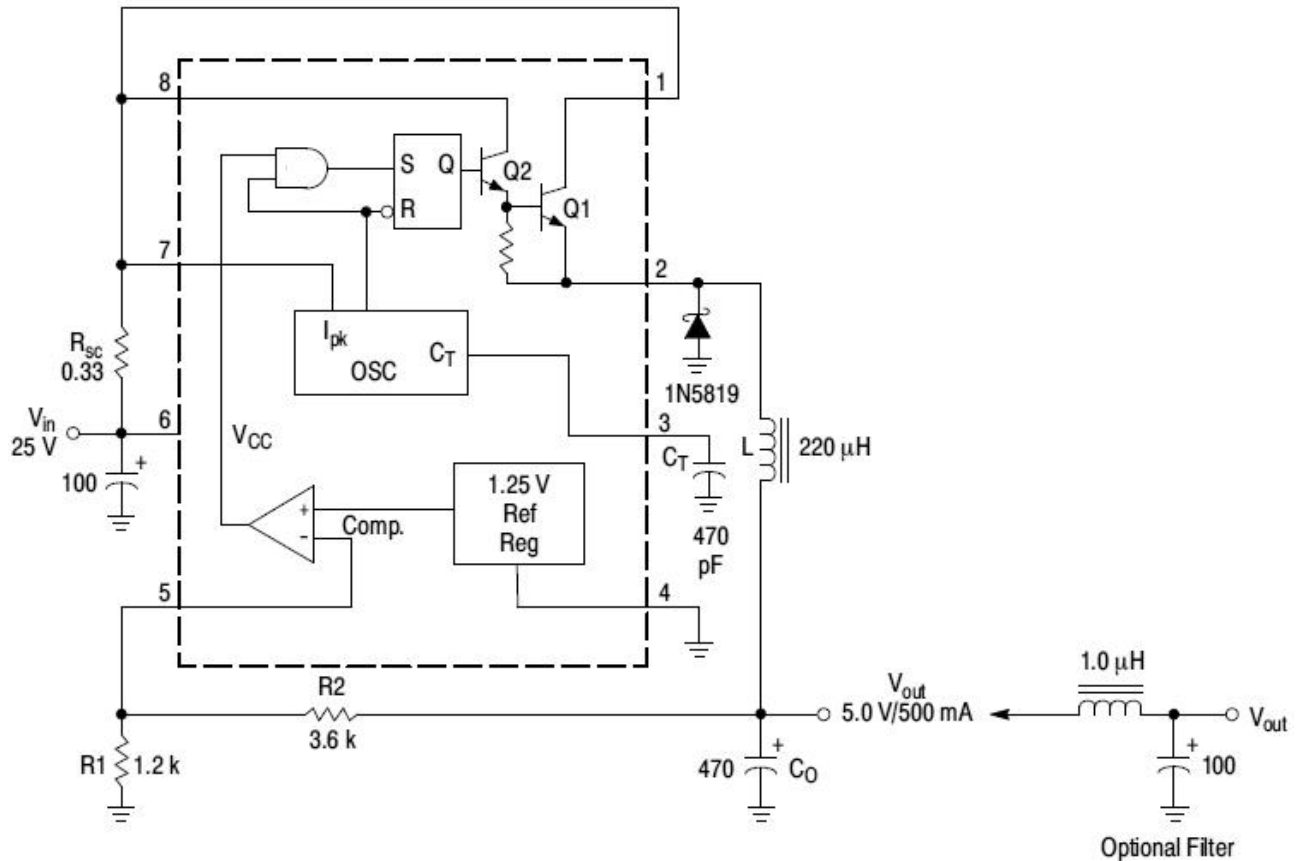
1. Step-Up Converter



Test	Conditions	Results
Line Regulation	$V_{in}=8.0V\sim 16V, I_o=175mA$	$30mV=\pm 0.05\%$
Load Regulation	$V_{in}=12V, I_o=75mA\sim 175mA$	$10mV=\pm 0.017\%$
Output Ripple	$V_{in}=12V, I_o=175mA$	$400mV_{pp}$
Efficiency	$V_{in}=12V, I_o=175mA$	87.7%
Output Ripple With Optional Filter	$V_{in}=12V, I_o=175mA$	$40mV_{pp}$



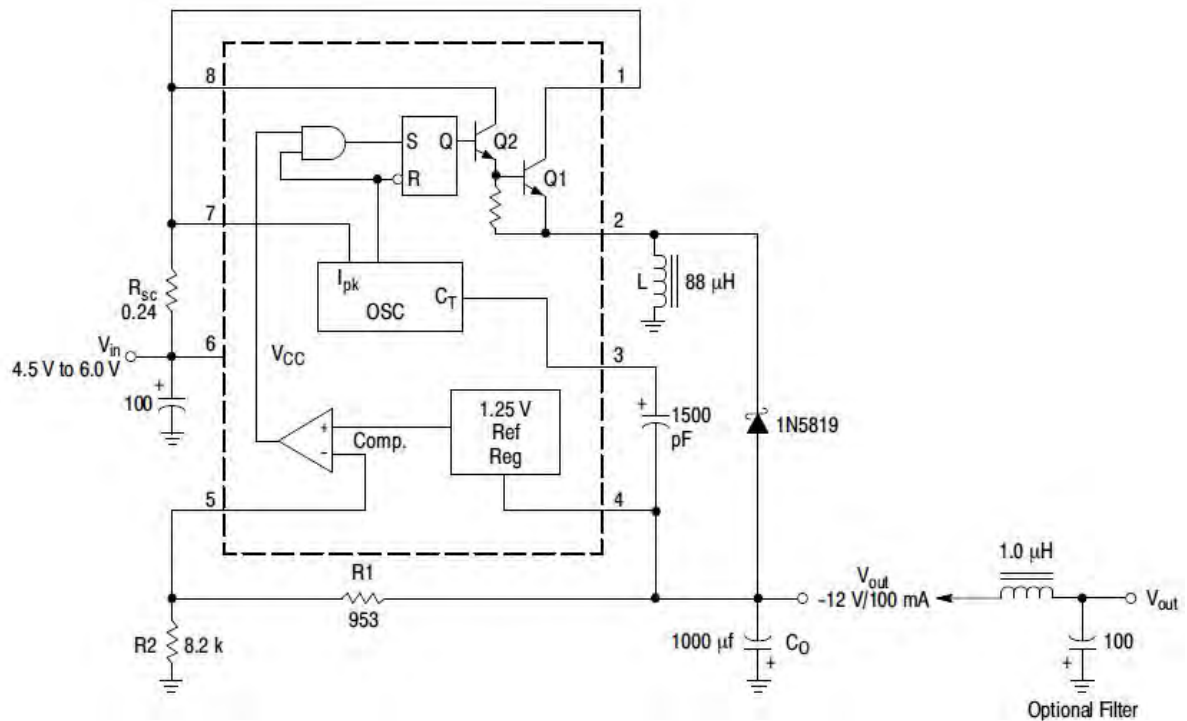
2. Step-Down Converter



Test	Conditions	Results
Line Regulation	$V_{in}=15V\sim 25V, I_o=500mA$	$12mV=\pm 0.12\%$
Load Regulation	$V_{in}=25V, I_o=50mA\sim 500mA$	$3.0mV=\pm 0.03\%$
Output Ripple	$V_{in}=25V, I_o=500mA$	$120mV_{pp}$
Short Circuit Current	$V_{in}=25V, R_L=0.1\Omega$	$1.1A$
Efficiency	$V_{in}=25V, I_o=500mA$	83.7%
Output Ripple With Optional Filter	$V_{in}=25V, I_o=500mA$	$40mV_{pp}$



3. Voltage Inverting Converter



Test	Conditions	Results
Line Regulation	$V_{in}=4.5V\sim 6.0V, I_o=100mA$	$3.0mV=\pm 0.012\%$
Load Regulation	$V_{in}=5.0V, I_o=10mA\sim 100mA$	$0.022V=\pm 0.09\%$
Output Ripple	$V_{in}=5.0V, I_o=100mA$	$500mV_{pp}$
Short Circuit Current	$V_{in}=5.0V, R_L=0.1\Omega$	$910mA$
Efficiency	$V_{in}=5.0V, I_o=100mA$	62.2%
Output Ripple With Optional Filter	$V_{in}=5.0V, I_o=100mA$	$70mV_{pp}$



Application Information

Calculation	Step-Up	Step-Down	Voltage-Inverting
t_{on}/t_{off}	$\frac{V_{out} + V_F - V_{in(min)}}{V_{in(min)} - V_{sat}}$	$\frac{V_{out} + V_F}{V_{in(min)} - V_{sat} - V_{out}}$	$\frac{ V_{out} + V_F}{V_{in} - V_{sat}}$
$(t_{on} + t_{off})$	$\frac{1}{f}$	$\frac{1}{f}$	$\frac{1}{f}$
t_{off}	$\frac{t_{on} + t_{off}}{\frac{t_{on}}{t_{off}} + 1}$	$\frac{t_{on} + t_{off}}{\frac{t_{on}}{t_{off}} + 1}$	$\frac{t_{on} + t_{off}}{\frac{t_{on}}{t_{off}} + 1}$
t_{on}	$(t_{on} + t_{off}) - t_{off}$	$(t_{on} + t_{off}) - t_{off}$	$(t_{on} + t_{off}) - t_{off}$
C_T	$4.0 \times 10^{-5} t_{on}$	$4.0 \times 10^{-5} t_{on}$	$4.0 \times 10^{-5} t_{on}$
$I_{pk(switch)}$	$2I_{out(max)} \left(\frac{t_{on}}{t_{off}} + 1 \right)$	$2I_{out(max)}$	$2I_{out(max)} \left(\frac{t_{on}}{t_{off}} + 1 \right)$
R_{sc}	$0.3/I_{pk(switch)}$	$0.3/I_{pk(switch)}$	$0.3/I_{pk(switch)}$
$L_{(min)}$	$\left(\frac{V_{in(min)} - V_{sat}}{I_{pk(switch)}} \right) t_{on(max)}$	$\left(\frac{V_{in(min)} - V_{sat} - V_{out}}{I_{pk(switch)}} \right) t_{on(max)}$	$\left(\frac{V_{in(min)} - V_{sat}}{I_{pk(switch)}} \right) t_{on(max)}$
C_O	$9 \frac{I_{out} t_{on}}{V_{ripple(pp)}}$	$\frac{I_{pk(switch)} (t_{on} + t_{off})}{8V_{ripple(pp)}}$	$9 \frac{I_{out} t_{on}}{V_{ripple(pp)}}$

V_{sat} = Saturation voltage of the output switch

V_F = Forward voltage drop of the output rectifier

The following power supply characteristics must be chosen:

V_{in} — Nominal input voltage

V_{out} — Desired output voltage , $|V_{out}| = 1.25 \times \left(1 + \frac{R2}{R1} \right)$

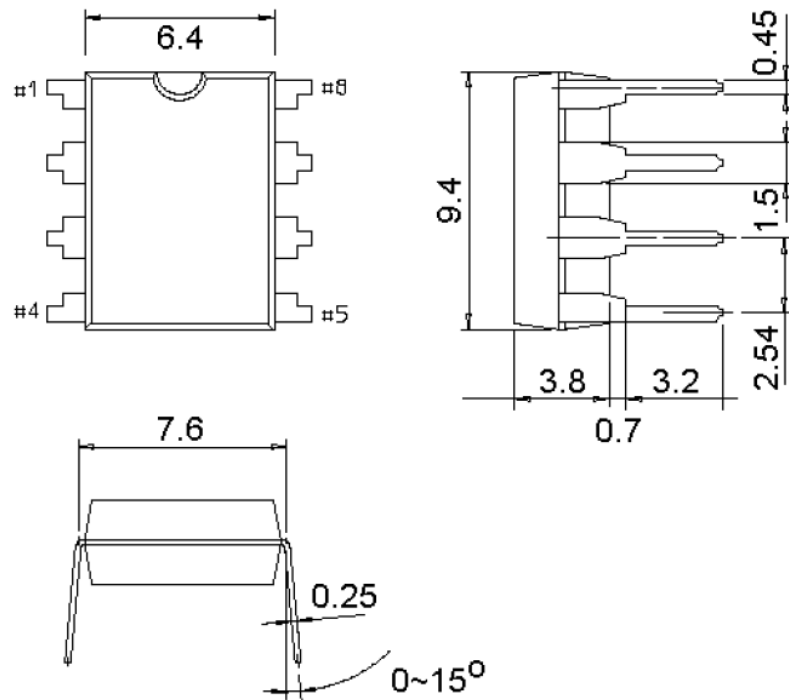
I_{out} — Desired output current

f_{min} — Minimum desired output switching frequency at the selected values of V_{in} and I_o

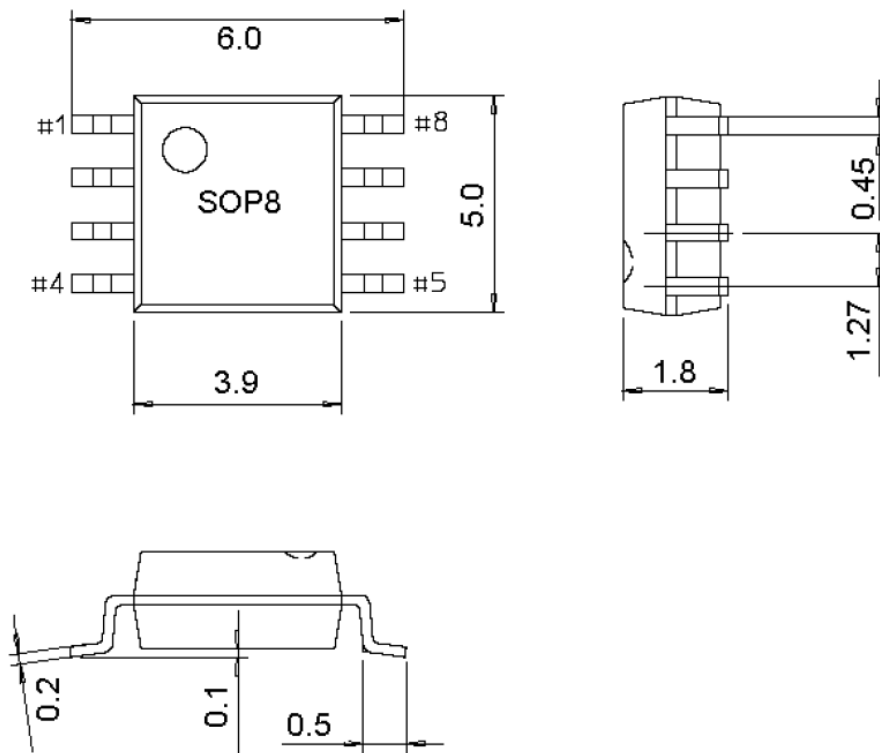
$V_{ripple(pp)}$ — Desired peak-to-peak output ripple voltage. In practice, the calculated capacitor value will need to be increased due to its equivalent series resistance and board layout. The ripple voltage should be kept to a low value since it will directly affect the line and load regulation.



DIP-8



SOP-8





Attention

- Any and all HUA XUAN YANG ELECTRONICS products described or contained herein do not have specifications that can handle applications that require extremely high levels of reliability, such as life-support systems, aircraft's control systems, or other applications whose failure can be reasonably expected to result in serious physical and/or material damage. Consult with your HUA XUAN YANG ELECTRONICS representative nearest you before using any HUA XUAN YANG ELECTRONICS products described or contained herein in such applications.
- HUA XUAN YANG ELECTRONICS assumes no responsibility for equipment failures that result from using products at values that exceed, even momentarily, rated values (such as maximum ratings, operating condition ranges, or other parameters) listed in products specifications of any and all HUA XUAN YANG ELECTRONICS products described or contained herein.
- Specifications of any and all HUA XUAN YANG ELECTRONICS products described or contained herein stipulate the performance, characteristics, and functions of the described products in the independent state, and are not guarantees of the performance, characteristics, and functions of the described products as mounted in the customer's products or equipment. To verify symptoms and states that cannot be evaluated in an independent device, the customer should always evaluate and test devices mounted in the customer's products or equipment.
- HUA XUAN YANG ELECTRONICS CO.,LTD. strives to supply high-quality high-reliability products. However, any and all semiconductor products fail with some probability. It is possible that these probabilistic failures could give rise to accidents or events that could endanger human lives, that could give rise to smoke or fire, or that could cause damage to other property. When designing equipment, adopt safety measures so that these kinds of accidents or events cannot occur. Such measures include but are not limited to protective circuits and error prevention circuits for safe design, redundant design, and structural design.
- In the event that any or all HUA XUAN YANG ELECTRONICS products(including technical data, services) described or contained herein are controlled under any of applicable local export control laws and regulations, such products must not be exported without obtaining the export license from the authorities concerned in accordance with the above law.
- No part of this publication may be reproduced or transmitted in any form or by any means, electronic or mechanical, including photocopying and recording, or any information storage or retrieval system, or otherwise, without the prior written permission of HUA XUAN YANG ELECTRONICS CO.,LTD.
- Information (including circuit diagrams and circuit parameters) herein is for example only ; it is not guaranteed for volume production. HUA XUAN YANG ELECTRONICS believes information herein is accurate and reliable, but no guarantees are made or implied regarding its use or any infringements of intellectual property rights or other rights of third parties.
- Any and all information described or contained herein are subject to change without notice due to product/technology improvement, etc. When designing equipment, refer to the "Delivery Specification" for the HUA XUAN YANG ELECTRONICS product that you intend to use.