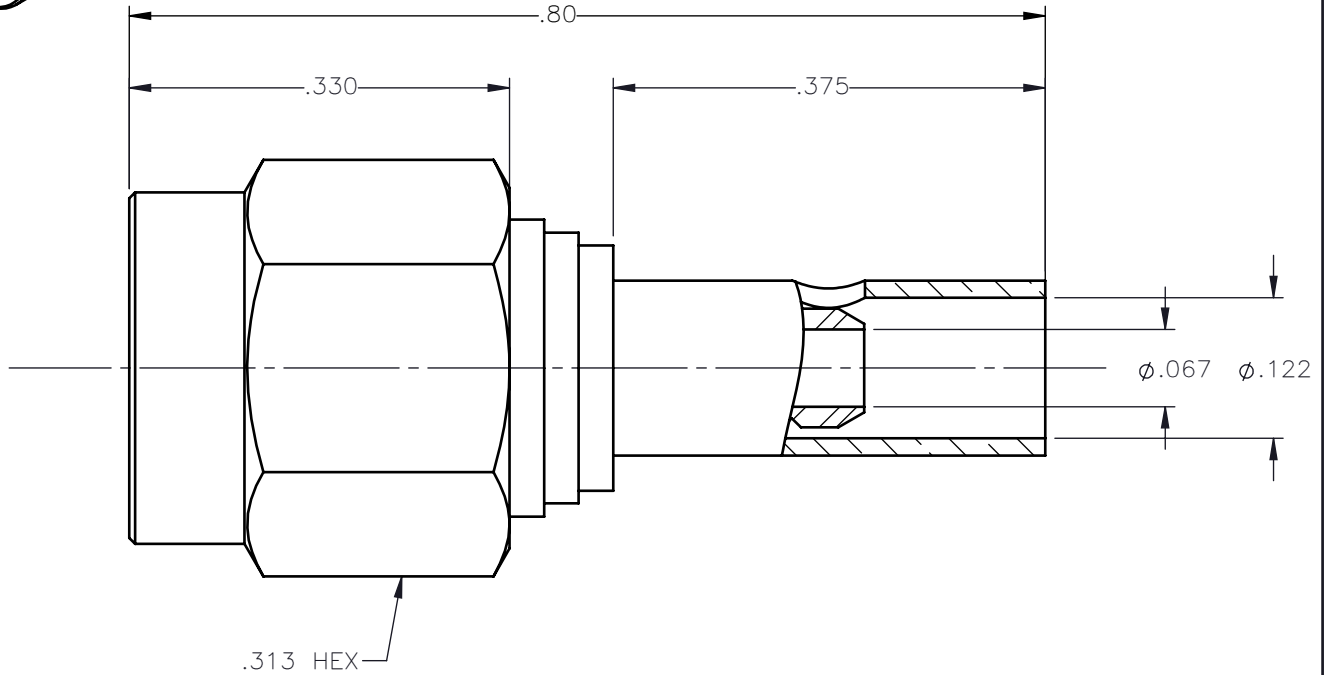
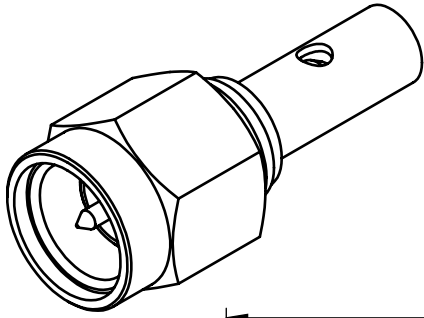


| REVISIONS | | | |
|-----------|-----------------|----------|----------|
| REV. | DESCRIPTION | DATE | APPROVED |
| A | INITIAL RELEASE | 05/24/16 | N.D. |





NOTES:

MATERIALS:

1. BODY & COUPLING NUT = STAINLESS STEEL PER ASTM A582, ALLOY 303, CONDITION "A".
2. INSULATOR = VIRGIN WHITE TEFLON PER ASTM D1710, GRADE 1, TYPE I, CLASS "B".
3. CONTACT & RETAINING RING = BERYLLIUM COPPER PER ASTM B196, ALLOY C17300, TEMPER TD04.
4. CRIMP SLEEVE = SEAMLESS LOWLEAD BRASS TUBE, ALLOY 330, SOFT ANNEAL TEMPER, .025/.060 GRAIN SIZE OR SEAMLESS COPPER TUBE PER ASTM B75, TYPE C12000, TEMPER: LIGHT ANNEAL 050 EXCEPT YIELD STRENGTH.
5. GASKET = SILICONE RUBBER PER ZZ-R-765, CLASS 2B, GRADE 65-75.
6. SHRINK SLEEVE = THERMOFIT SCL (NOT SHOWN)

FINISHES:

1. BODY = GOLD PLATE PER ASTM B488-11, TYPE II, 30µin MIN, GRADE C, OVER 50 TO 100µin STRESS FREE NICKEL PER AMS-QQ-N-290.
2. CONTACT = GOLD PLATE PER ASTM B488-11, TYPE II, 50µin MIN, GRADE C, OVER 100 TO 200µin STRESS FREE SULFAMATE NICKEL PER AMS-QQ-N-290.
3. CRIMP SLEEVE = GOLD PLATE PER ASTM B488-11, TYPE II, 30µin MIN, GRADE C OVER 100 TO 200µin COPPER STRIKE PER AMS 2418.
4. COUPLING NUT = PASSIVATE PER SAE-AMS-2700

| | | | | | | | |
|---|----------------------|-----------|---|--|----------|---|-----|
| UNLESS OTHERWISE SPECIFIED DIMENSIONS ARE IN INCHES TOLERANCES ON | DWN: | DATE |  | Property of Radiall | |  | |
| | N.D. | 05/24/16 | | This document cannot be reproduced or communicated to a third party without prior written permission of RADIALL. | | | |
| DECIMAL | ANGLE | CHKD: | DATE | SMA STRAIGHT PLUG CRIMP TYPE FOR RG-316 & SIMILAR CABLES | | | |
| | | D.N. | 05/24/16 | | | | |
| | | APVD: | DATE | | | | |
| | | J.M. | 05/24/16 | SIZE | FSCM NO. | DWG NO. | REV |
| REFERENCE: | MATERIAL & FINISHES: | SEE NOTES | | A | 19505 | 9001-1033-003 | A |
| ORIGINATED: N.D. DATE: 05/24/16 | | SCALE | 6:1 | THIRD ANGLE PROJECTION | | SHEET 1 OF 1 | |

9001-1033-003