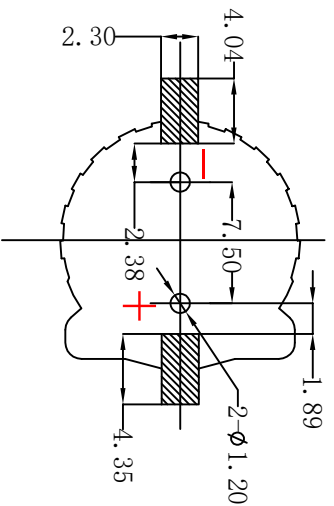
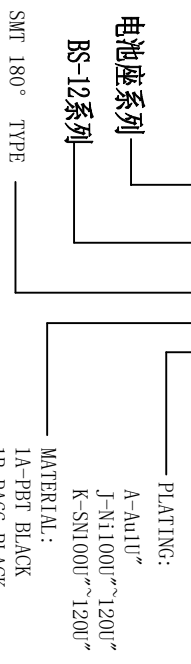


REV.	ECN NO.	REVISED	DATE

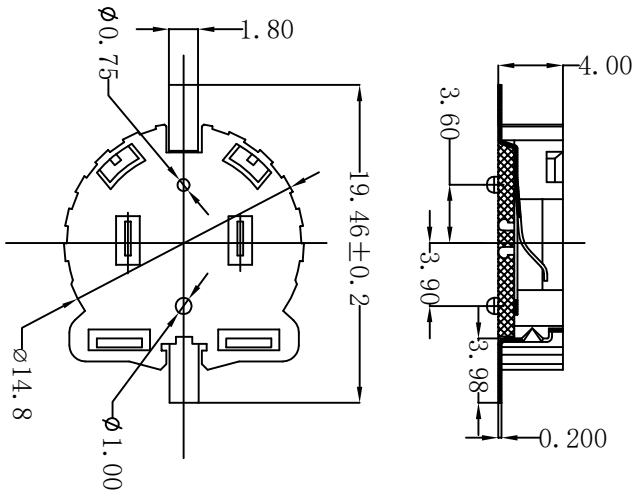
NOTE:  
 1. MATERIAL:  
 a. HOUSING: PPS  
 b. CONTACT: PHOSPHOR BRONZE  
 (SURFACE PLATING: A\*\*U\*\*)  
 SEE ORDERING INFORMATION  
 2. ELECTRIC:  
 a. CONTACT RESISTANCE: 30 MILLIOHMS MAX  
 b. INSULATION RESISTANCE: 1000 MEGA OHMS MIN  
 c. DIELECTRIC VOLTAGE: 500V AC ONE SEC LEVEL  
 d. OPERATING TEMPERATURE: -40°C ~ +85°C

## ORDERING INFORMATION

**BS-12-B\*\*\*003**



PCB Layout Diagram  
Top View



NO.	PART NAME	Q'TY	MATERIAL	PLATING & COLOR
1	HOUSING	1	PPS	BROWN
2	TERMINAL (+)	1	PHOSPHOR BRONZE, T=0.20MM	Gold Plating and Ni Under-Plating
3	TERMINAL (-)	1	PHOSPHOR BRONZE, T=0.20MM	Gold Plating and Ni Under-Plating

UNLESS OTHERWISE SPECIFIED TOLERANCES

DECIMALS: X.X : ±0.30 X.XX : ±0.25 X.XXX : ±0.20 X.XXX : ±0.10

ANGLES: X : ±1° X.X : ±0.5°

WEIGHT: 0.6 g

SHEET 1 OF 1

SCALE: 1:1 SIZE: A4 VIEW: PART NO.: BS-12-B3AA003

UNIT: mm REV: A/O OBJECT: QJ

DSND QJ.LIUSU DATE 2010.10.17

CHKD QJ.HUAN DATE 2010.10.18

APVD QJ.QILIU DATE 2010.10.18

TITLE: CR1220-2ZX

**深圳市琦捷电子有限公司** 0755-23112665