

har-flex Power F str 2P SMT PL1 280pcs

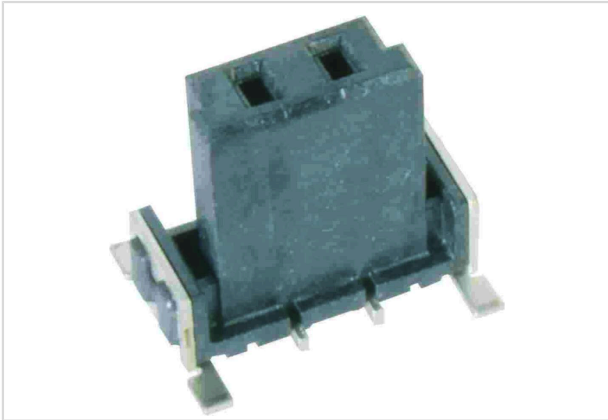


Image is for illustration purposes only. Please refer to product description.

Part number	15 62 002 2601 000
Specification	har-flex Power F str 2P SMT PL1 280pcs
HARTING eCatalogue	https://b2b.harting.com/15620022601000

Identification

Category	Connectors
Series	har-flex®
Identification	Power
Element	Female connector
Description of the contact	Straight

Version

Termination method	Reflow soldering termination (SMT)
Connection type	Motherboard to daughtercard Mezzanine
Number of contacts	2
Details	According to IEC 61984, it is an unencapsulated connector. Protection against electric shock must be ensured by the type of installation by the user.
Pack contents	280 pieces on reel

Technical characteristics

Contact spacing (termination side)	2.54 mm
Contact spacing (mating side)	2.54 mm
Stacking height	9.05 mm
Rated current	25 A
Rated voltage	180 V
Rated voltage	acc. to IEC 60664-1
Rated impulse voltage	1.5 kV
Pollution degree	2



Pushing Performance
Since 1945

Technical characteristics

Clearance distance	≥1.74 mm
Creepage distance	≥1.74 mm PCB ≥1.89 mm Connector
Insulation resistance	>10 ¹⁰ Ω
Contact resistance	≤25 mΩ
Limiting temperature	-55 ... +125 °C
Performance level	1
Mating cycles	≥500
Test voltage U _{r.m.s.}	1.39 kV
Isolation group	IIIa (175 ≤ CTI < 400)
Moisture Sensitivity Level (MSL)	1 acc. to ECA/IPC/JEDEC J-STD-020D
Process Sensitivity Level (PSL)	R0 acc. to ECA/IPC/JEDEC J-STD-020D
Coplanarity of contacts	0.1 mm

Material properties

Material (insert)	Liquid crystal polymer (LCP)
Colour (insert)	Black
Material (contacts)	Copper alloy
Surface (contacts)	Noble metal over Ni Mating side Sn over Ni Termination side
Material flammability class acc. to UL 94	V-0
RoHS	compliant
ELV status	compliant
China RoHS	e
REACH Annex XVII substances	Not contained
REACH ANNEX XIV substances	Not contained
REACH SVHC substances	Not contained
California Proposition 65 substances	Not contained

Commercial data

Packaging size	1
Net weight	2.357 g
Country of origin	China
European customs tariff number	85366990



Pushing Performance
Since 1945

Commercial data

GTIN	5713140204348
ETIM	EC002637
eCl@ss	27460201 PCB connector (board connector)