

版本	变更内容	工程确认	日期

A

B

C

D

E

F

A

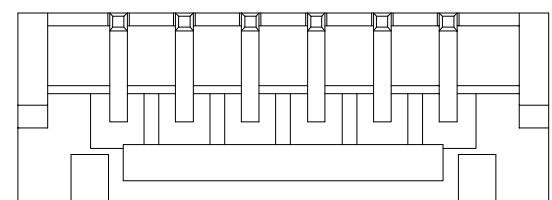
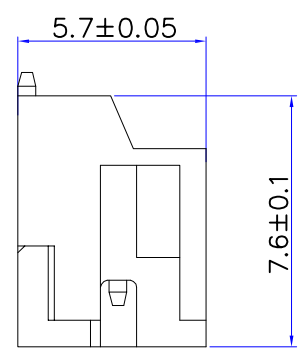
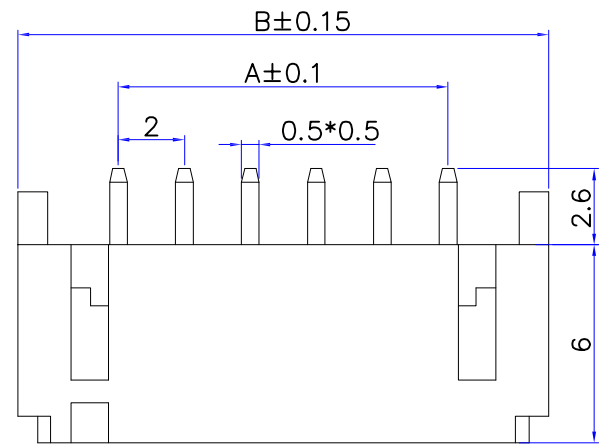
B

C

D

E

F



YTC-PH-16AWB	30.0	34.0
YTC-PH-15AWB	28.0	32.0
YTC-PH-14AWB	26.0	30.0
YTC-PH-13AWB	24.0	28.0
YTC-PH-12AWB	22.0	26.0
YTC-PH-11AWB	20.0	24.0
YTC-PH-10AWB	18.0	22.0
YTC-PH-9AWB	16.0	20.0
YTC-PH-8AWB	14.0	18.0
YTC-PH-7AWB	12.0	16.0
YTC-PH-6AWB	10.0	14.0
YTC-PH-5AWB	8.0	12.0
YTC-PH-4AWB	6.0	10.0
YTC-PH-3AWB	4.0	8.0
YTC-PH-2AWB	2.0	6.0
N	A (MM)	B (MM)

深圳市怡远科技有限公司 SHENZHEN YIYUAN TECHNOLOGY CO., LTD		页码 (SHEET)	1/1	单位 (UNIT): MM
		版本 (REV)	A1	比例 (SCALE)
品名 (ITEM NO)	2.0间距卧贴 WAFER DIP TYPE	日期 (DATE)	2021. 10. 12	
料号 (PART NO)	YTC-PH-**AWB	设计 (DESIGN)	LUO	
图号 (DWG NO)		审核 (CHECKED)	ROGER LI	GENERAL TOLERANCE *** ±0.08 ** ±0.15 * ±0.25
		核准 (APPROVED)	ROC ZHAO	
These drawings and specifications are Shenzhen Yiyuan Technology Co Ltd. The property should not be copied. Without Shenzhen Yiyuan Technology Co. Ltd. Prior written consent to copy or use in any way. Email at info@yiyuanswitches.com				

	插片	磷青铜		镀铅锡	
2	插针	黄铜		镀锡铈	
1	基座	LCP (UL94V-0)			
序号	图号	名称	材料	数量	附注