



TE Internal #: 936619-2
 Housing for Female Terminals, Wire-to-Board / Wire-to-Wire, 2
 Position, .37 in [9.4 mm] Centerline, Black, Wire & Cable, Cable
 Mount (Free-Hanging)

[View on TE.com >](#)

Connectors > Automotive Connectors > Automotive Housings



Connector System: **Wire-to-Board, Wire-to-Wire**
 Number of Positions: **2**
 Connector & Housing Type: **Housing for Female Terminals**
 Centerline (Pitch): **9.4 mm [.37 in]**
 Sealable: **No**

Features

Product Type Features

Mixed & Hybrid Connector	No
Connector System	Wire-to-Board, Wire-to-Wire
Connector & Housing Type	Housing for Female Terminals
Sealable	No
Connector & Contact Terminates To	Wire & Cable
Primary Locking Feature	Integrated in Housing

Configuration Features

Number of Positions	2
Number of Rows	1

Body Features

Primary Product Color	Black
-----------------------	-------

Contact Features

Mating Tab Width	9.5 mm[.374 in]
------------------	-----------------

Mechanical Attachment



Connector Mounting Type	Cable Mount (Free-Hanging)
-------------------------	----------------------------

Housing Features

Centerline (Pitch)	9.4 mm [.37 in]
--------------------	-----------------

Other

Connector Position Assurance Capable	No
--------------------------------------	----

Product Compliance

[For compliance documentation, visit the product page on TE.com>](#)

EU RoHS Directive 2011/65/EU	Compliant
------------------------------	-----------

EU ELV Directive 2000/53/EC	Compliant
-----------------------------	-----------

China RoHS 2 Directive MIIT Order No 32, 2016	No Restricted Materials Above Threshold
---	---

EU REACH Regulation (EC) No. 1907/2006	Current ECHA Candidate List: JUNE 2023 (235) Candidate List Declared Against: JUNE 2023 (235) Does not contain REACH SVHC
--	---

Halogen Content	Low Halogen - Br, Cl, F, I < 900 ppm per homogenous material. Also BFR/CFR/PVC Free
-----------------	---

Solder Process Capability	Not applicable for solder process capability
---------------------------	--

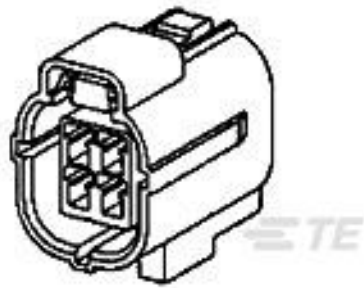
Product Compliance Disclaimer

This information is provided based on reasonable inquiry of our suppliers and represents our current actual knowledge based on the information they provided. This information is subject to change. The part numbers that TE has identified as EU RoHS compliant have a maximum concentration of 0.1% by weight in homogenous materials for lead, hexavalent chromium, mercury, PBB, PBDE, DBP, BBP, DEHP, DIBP, and 0.01% for cadmium, or qualify for an exemption to these limits as defined in the Annexes of Directive 2011/65/EU (RoHS2). Finished electrical and electronic equipment products will be CE marked as required by Directive 2011/65/EU. Components may not be CE marked. Additionally, the part numbers that TE has identified as EU ELV compliant have a maximum concentration of 0.1% by weight in homogenous materials for lead, hexavalent chromium, and mercury, and 0.01% for cadmium, or qualify for an exemption to these limits as defined in the Annexes of Directive 2000/53/EC (ELV). Regarding the REACH Regulation, the information TE provides on SVHC in articles for this part number is based on the latest European Chemicals Agency (ECHA) 'Guidance on requirements for substances in articles' posted at this URL: <https://echa.europa.eu/guidance-documents/guidance-on-reach>

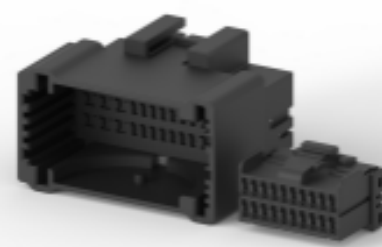
Compatible Parts

TE Part # 936620-2
MCP 9.5MM PLUG 2P HSG BLK

Customers Also Bought



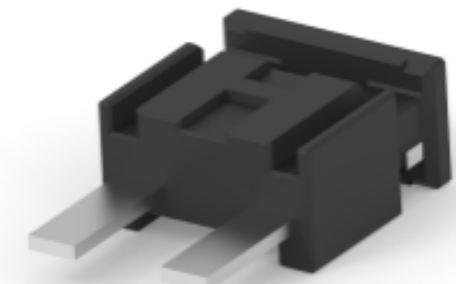
TE Part #368530-1
E-S MK-2(+) 6P PLUG ASS'Y



TE Part #936133-1
MULTILOCK, CONNECTOR HOUSING



TE Part #1-967588-1
AMP MCP 9.5, CONTACT



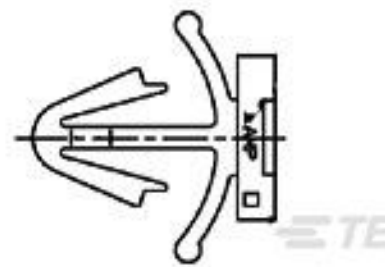
TE Part #1-2109363-2
DIODE ASSY 4A L/P



TE Part #2294463-1
MCON 1.2 CB TAB MONO



TE Part #2411042-1
TAB0.64X0.64, TERMINAL, 025 TAB CONTACT



TE Part #936286-1
CLIP FOR 090III(7.0KEY HOLE)

Documents

Product Drawings

[MCP 9.5MM PLUG 2P ASSY BLK](#)

English

CAD Files

[3D PDF](#)

3D

Customer View Model

[ENG_CVM_CVM_936619-2_A.2d_dxf.zip](#)

English

Customer View Model

[ENG_CVM_CVM_936619-2_A.3d_igs.zip](#)

English

Customer View Model

[ENG_CVM_CVM_936619-2_A.3d_stp.zip](#)

English

By downloading the CAD file I accept and agree to the [Terms and Conditions](#) of use.

936619-2

Housing for Female Terminals, Wire-to-Board / Wire-to-Wire, 2 Position, .37 in [9.4 mm] Centerline, Black, Wire & Cable, Cable Mount (Free-Hanging)



Product Specifications

Product Specification

English