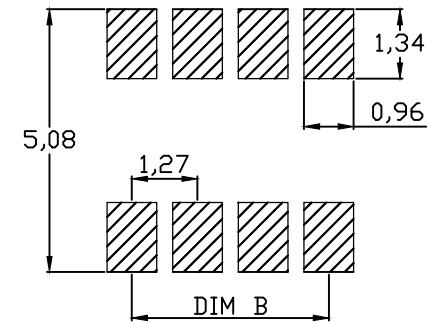
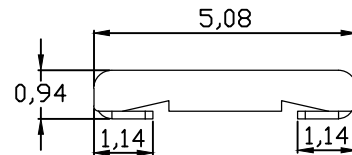
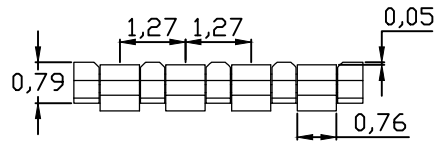
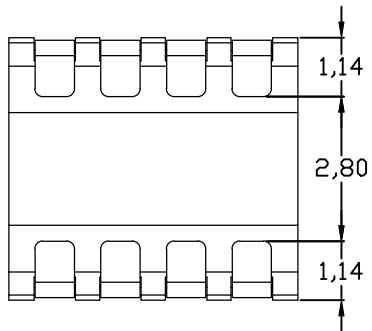


性能:

- 额定电流: 2.0A
- 额定电压: 12V
- 耐电压: 500V
- 接触电阻: 30mΩ MAX
- 绝缘电阻: 500MΩ
- 工作温度: -55℃~+125℃
- 使用寿命: 5000次以上
- 塑件(材质): LCP黑色 耐高温260度
- 接触点(材质): 黄铜C2680, 接触面镀金3U"



RECOMMENDED PCB LAYOUT  
TOP VIEW (.XX±0.05)



规格型号	DIM A	DIM B
KH-12702-2P094	3.05	1.27
KH-12702-3P094	4.32	2.54
KH-12702-4P094	5.59	3.81
KH-12702-5P094	6.86	5.08
KH-12702-6P094	8.13	6.35

深圳市金航标电子有限公司	www.kinghelm.com.cn	DESIGN	X. Z. Huang	SCALE		TOLERANCE	PART NAME	电池座	
		DRAWING	X. Z. Huang	UNIT	mm			X. ±0.35	PART NO.
KH-12702-5P094	0755-28190160	CHECK	X. X. Zheng	SIZE	A4:210:297	X.X ±0.25	DWG. NO.		
		APPROVAL	M. Y. Li	VER.	01	X.XX ±0.15	DATE	2019-11-04	
						ANGLE		±3°	