

CDC-MP 0,14-0,5-R - Crimp contact



1016663

<https://www.phoenixcontact.com/us/products/1016663>

Please be informed that the data shown in this PDF document is generated from our online catalog. Please find the complete data in the user documentation. Our general terms of use for downloads are valid.



Crimp contact

Commercial data

Item number	1016663
Packing unit	5,000 pc
Minimum order quantity	5,000 pc
Note	Made to order (non-returnable)
Sales key	AA03
Product key	AACDCA
GTIN	4055626498430
Weight per piece (including packing)	2.22 g
Weight per piece (excluding packing)	0.12 g
Customs tariff number	85366990
Country of origin	DE

CDC-MP 0,14-0,5-R - Crimp contact

1016663

<https://www.phoenixcontact.com/us/products/1016663>



Technical data

Notes

General	The crimp contacts may only be processed with approved crimping tools.
General	You can find ordering information for the approved crimping tool for automated conductor connections in the installation instructions in the Downloads section.
General	The crimp heights depend on the crimping tool used. You can find the values in the tool documentation.

Mounting

Connection method	Crimp connection
-------------------	------------------

Product properties

Product type	Crimp contact
Product family	CDC-MP

Connection data

Connection method	Crimp connection
Contact connection type	Socket
Stripping length	3 mm
Conductor cross section flexible	0.14 mm ² ... 0.5 mm ²
Conductor cross section AWG	26 ... 20

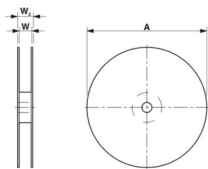
Material specifications

Contact surface	Tin Sn
Contact surface material	Tin
Metal surface terminal point (top layer)	Tin (2 - 4 µm Sn)
Metal surface contact area (top layer)	Tin (2 - 4 µm Sn)

Electrical properties

Nominal current I _N	6 A
--------------------------------	-----

Packaging specifications

Dimensional drawing	
Type of packaging	Belt

CDC-MP 0,14-0,5-R - Crimp contact



1016663

<https://www.phoenixcontact.com/us/products/1016663>

Classifications

ECLASS

ECLASS-11.0	27460403
ECLASS-12.0	27460403
ECLASS-13.0	27460403

ETIM

ETIM 9.0	EC000796
----------	----------

UNSPSC

UNSPSC 21.0	39121500
-------------	----------

CDC-MP 0,14-0,5-R - Crimp contact



1016663

<https://www.phoenixcontact.com/us/products/1016663>

Environmental product compliance

China RoHS	Environmentally friendly use period: unlimited = EFUP-e
	No hazardous substances above threshold values

CDC-MP 0,14-0,5-R - Crimp contact



1016663

<https://www.phoenixcontact.com/us/products/1016663>

Accessories

CDDC 1,5/ 2-PV-3,5 - Direct connector

1016515

<https://www.phoenixcontact.com/us/products/1016515>



PCB direct plug, nominal cross section: 1.5 mm², color: green, nominal current: 8 A, rated voltage (III/2): 160 V, contact surface: Tin, number of potentials: 4, number of rows: 2, number of positions: 2, number of connections: 4, product range: CDDC 1,5/...-PV, pitch: 3.5 mm, connection method: Crimp connection, mounting: SKEDD - Direct plug-in technology, conductor/PCB connection direction: 90 °, pin layout: Linear pinning, plug-in system: SKEDD, locking: Snap-in locking, mounting: Self-locking flange, type of packaging: packed in cardboard

CDDC 1,5/ 3-PV-3,5 - Direct connector

1016513

<https://www.phoenixcontact.com/us/products/1016513>



PCB direct plug, nominal cross section: 1.5 mm², color: green, nominal current: 8 A, rated voltage (III/2): 160 V, contact surface: Tin, number of potentials: 6, number of rows: 2, number of positions: 3, number of connections: 6, product range: CDDC 1,5/...-PV, pitch: 3.5 mm, connection method: Crimp connection, mounting: SKEDD - Direct plug-in technology, conductor/PCB connection direction: 90 °, pin layout: Linear pinning, plug-in system: SKEDD, locking: Snap-in locking, mounting: Self-locking flange, type of packaging: packed in cardboard

CDC-MP 0,14-0,5-R - Crimp contact

1016663

<https://www.phoenixcontact.com/us/products/1016663>



CDDC 1,5/ 4-PV-3,5 - Direct connector

1016512

<https://www.phoenixcontact.com/us/products/1016512>



PCB direct plug, nominal cross section: 1.5 mm², color: green, nominal current: 8 A, rated voltage (III/2): 160 V, contact surface: Tin, number of potentials: 8, number of rows: 2, number of positions: 4, number of connections: 8, product range: CDDC 1,5/...-PV, pitch: 3.5 mm, connection method: Crimp connection, mounting: SKEDD - Direct plug-in technology, conductor/PCB connection direction: 90 °, pin layout: Linear pinning, plug-in system: SKEDD, locking: Snap-in locking, mounting: Self-locking flange, type of packaging: packed in cardboard

CDDC 1,5/ 5-PV-3,5 - Direct connector

1016516

<https://www.phoenixcontact.com/us/products/1016516>



PCB direct plug, nominal cross section: 1.5 mm², color: green, nominal current: 8 A, rated voltage (III/2): 160 V, contact surface: Tin, number of potentials: 10, number of rows: 2, number of positions: 5, number of connections: 10, product range: CDDC 1,5/...-PV, pitch: 3.5 mm, connection method: Crimp connection, mounting: SKEDD - Direct plug-in technology, conductor/PCB connection direction: 90 °, pin layout: Linear pinning, plug-in system: SKEDD, locking: Snap-in locking, mounting: Self-locking flange, type of packaging: packed in cardboard

CDC-MP 0,14-0,5-R - Crimp contact

1016663

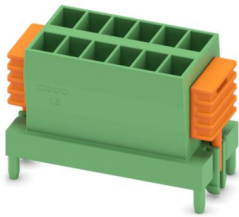
<https://www.phoenixcontact.com/us/products/1016663>



CDDC 1,5/ 6-PV-3,5 - Direct connector

1016517

<https://www.phoenixcontact.com/us/products/1016517>



PCB direct plug, nominal cross section: 1.5 mm², color: green, nominal current: 8 A, rated voltage (III/2): 160 V, contact surface: Tin, number of potentials: 12, number of rows: 2, number of positions: 6, number of connections: 12, product range: CDDC 1,5/...-PV, pitch: 3.5 mm, connection method: Crimp connection, mounting: SKEDD - Direct plug-in technology, conductor/PCB connection direction: 90 °, pin layout: Linear pinning, plug-in system: SKEDD, locking: Snap-in locking, mounting: Self-locking flange, type of packaging: packed in cardboard

CDDC 1,5/ 7-PV-3,5 - Direct connector

1016518

<https://www.phoenixcontact.com/us/products/1016518>



PCB direct plug, nominal cross section: 1.5 mm², color: green, nominal current: 8 A, rated voltage (III/2): 160 V, contact surface: Tin, number of potentials: 14, number of rows: 2, number of positions: 7, number of connections: 14, product range: CDDC 1,5/...-PV, pitch: 3.5 mm, connection method: Crimp connection, mounting: SKEDD - Direct plug-in technology, conductor/PCB connection direction: 90 °, pin layout: Linear pinning, plug-in system: SKEDD, locking: Snap-in locking, mounting: Self-locking flange, type of packaging: packed in cardboard

CDC-MP 0,14-0,5-R - Crimp contact

1016663

<https://www.phoenixcontact.com/us/products/1016663>



CDDC 1,5/ 8-PV-3,5 - Direct connector

1016519

<https://www.phoenixcontact.com/us/products/1016519>

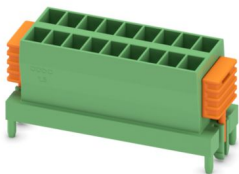


PCB direct plug, nominal cross section: 1.5 mm², color: green, nominal current: 8 A, rated voltage (III/2): 160 V, contact surface: Tin, number of potentials: 16, number of rows: 2, number of positions: 8, number of connections: 16, product range: CDDC 1,5/...-PV, pitch: 3.5 mm, connection method: Crimp connection, mounting: SKEDD - Direct plug-in technology, conductor/PCB connection direction: 90 °, pin layout: Linear pinning, plug-in system: SKEDD, locking: Snap-in locking, mounting: Self-locking flange, type of packaging: packed in cardboard

CDDC 1,5/ 9-PV-3,5 - Direct connector

1016520

<https://www.phoenixcontact.com/us/products/1016520>



PCB direct plug, nominal cross section: 1.5 mm², color: green, nominal current: 8 A, rated voltage (III/2): 160 V, contact surface: Tin, number of potentials: 18, number of rows: 2, number of positions: 9, number of connections: 18, product range: CDDC 1,5/...-PV, pitch: 3.5 mm, connection method: Crimp connection, mounting: SKEDD - Direct plug-in technology, conductor/PCB connection direction: 90 °, pin layout: Linear pinning, plug-in system: SKEDD, locking: Snap-in locking, mounting: Self-locking flange, type of packaging: packed in cardboard

CDC-MP 0,14-0,5-R - Crimp contact

1016663

<https://www.phoenixcontact.com/us/products/1016663>



CDDC 1,5/10-PV-3,5 - Direct connector

1016521

<https://www.phoenixcontact.com/us/products/1016521>



PCB direct plug, nominal cross section: 1.5 mm², color: green, nominal current: 8 A, rated voltage (III/2): 160 V, contact surface: Tin, number of potentials: 20, number of rows: 2, number of positions: 10, number of connections: 20, product range: CDDC 1,5/...-PV, pitch: 3.5 mm, connection method: Crimp connection, mounting: SKEDD - Direct plug-in technology, conductor/PCB connection direction: 90 °, pin layout: Linear pinning, plug-in system: SKEDD, locking: Snap-in locking, mounting: Self-locking flange, type of packaging: packed in cardboard

CDDC 1,5/11-PV-3,5 - Direct connector

1016510

<https://www.phoenixcontact.com/us/products/1016510>



PCB direct plug, nominal cross section: 1.5 mm², color: green, nominal current: 8 A, rated voltage (III/2): 160 V, contact surface: Tin, number of potentials: 22, number of rows: 2, number of positions: 11, number of connections: 22, product range: CDDC 1,5/...-PV, pitch: 3.5 mm, connection method: Crimp connection, mounting: SKEDD - Direct plug-in technology, conductor/PCB connection direction: 90 °, pin layout: Linear pinning, plug-in system: SKEDD, locking: Snap-in locking, mounting: Self-locking flange, type of packaging: packed in cardboard

CDC-MP 0,14-0,5-R - Crimp contact

1016663

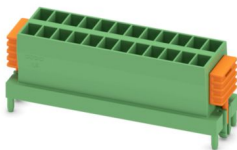
<https://www.phoenixcontact.com/us/products/1016663>



CDDC 1,5/12-PV-3,5 - Direct connector

1016522

<https://www.phoenixcontact.com/us/products/1016522>



PCB direct plug, nominal cross section: 1.5 mm², color: green, nominal current: 8 A, rated voltage (III/2): 160 V, contact surface: Tin, number of potentials: 24, number of rows: 2, number of positions: 12, number of connections: 24, product range: CDDC 1,5/...-PV, pitch: 3.5 mm, connection method: Crimp connection, mounting: SKEDD - Direct plug-in technology, conductor/PCB connection direction: 90 °, pin layout: Linear pinning, plug-in system: SKEDD, locking: Snap-in locking, mounting: Self-locking flange, type of packaging: packed in cardboard

CDDC 1,5/13-PV-3,5 - Direct connector

1016523

<https://www.phoenixcontact.com/us/products/1016523>



PCB direct plug, nominal cross section: 1.5 mm², color: green, nominal current: 8 A, rated voltage (III/2): 160 V, contact surface: Tin, number of potentials: 26, number of rows: 2, number of positions: 13, number of connections: 26, product range: CDDC 1,5/...-PV, pitch: 3.5 mm, connection method: Crimp connection, mounting: SKEDD - Direct plug-in technology, conductor/PCB connection direction: 90 °, pin layout: Linear pinning, plug-in system: SKEDD, locking: Snap-in locking, mounting: Self-locking flange, type of packaging: packed in cardboard

CDC-MP 0,14-0,5-R - Crimp contact

1016663

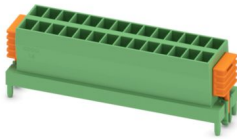
<https://www.phoenixcontact.com/us/products/1016663>



CDDC 1,5/14-PV-3,5 - Direct connector

1016524

<https://www.phoenixcontact.com/us/products/1016524>

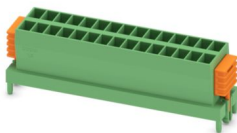


PCB direct plug, nominal cross section: 1.5 mm², color: green, nominal current: 8 A, rated voltage (III/2): 160 V, contact surface: Tin, number of potentials: 28, number of rows: 2, number of positions: 14, number of connections: 28, product range: CDDC 1,5/...-PV, pitch: 3.5 mm, connection method: Crimp connection, mounting: SKEDD - Direct plug-in technology, conductor/PCB connection direction: 90 °, pin layout: Linear pinning, plug-in system: SKEDD, locking: Snap-in locking, mounting: Self-locking flange, type of packaging: packed in cardboard

CDDC 1,5/15-PV-3,5 - Direct connector

1016525

<https://www.phoenixcontact.com/us/products/1016525>



PCB direct plug, nominal cross section: 1.5 mm², color: green, nominal current: 8 A, rated voltage (III/2): 160 V, contact surface: Tin, number of potentials: 30, number of rows: 2, number of positions: 15, number of connections: 30, product range: CDDC 1,5/...-PV, pitch: 3.5 mm, connection method: Crimp connection, mounting: SKEDD - Direct plug-in technology, conductor/PCB connection direction: 90 °, pin layout: Linear pinning, plug-in system: SKEDD, locking: Snap-in locking, mounting: Self-locking flange, type of packaging: packed in cardboard

CDC-MP 0,14-0,5-R - Crimp contact

1016663

<https://www.phoenixcontact.com/us/products/1016663>



CDDC 1,5/16-PV-3,5 - Direct connector

1016526

<https://www.phoenixcontact.com/us/products/1016526>



PCB direct plug, nominal cross section: 1.5 mm², color: green, nominal current: 8 A, rated voltage (III/2): 160 V, contact surface: Tin, number of potentials: 32, number of rows: 2, number of positions: 16, number of connections: 32, product range: CDDC 1,5/...-PV, pitch: 3.5 mm, connection method: Crimp connection, mounting: SKEDD - Direct plug-in technology, conductor/PCB connection direction: 90 °, pin layout: Linear pinning, plug-in system: SKEDD, locking: Snap-in locking, mounting: Self-locking flange, type of packaging: packed in cardboard

CDDC 2,5/ 2-PV-5,0 - Direct connector

1016293

<https://www.phoenixcontact.com/us/products/1016293>



PCB direct plug, nominal cross section: 2.5 mm², color: green, nominal current: 12 A, rated voltage (III/2): 320 V, contact surface: Tin, number of potentials: 4, number of rows: 2, number of positions: 2, number of connections: 4, product range: CDDC 2,5/...-PV, pitch: 5 mm, connection method: Crimp connection, mounting: SKEDD - Direct plug-in technology, conductor/PCB connection direction: 90 °, pin layout: Linear pinning, plug-in system: SKEDD, locking: Snap-in locking, mounting: Self-locking flange, type of packaging: packed in cardboard

CDC-MP 0,14-0,5-R - Crimp contact

1016663

<https://www.phoenixcontact.com/us/products/1016663>



CDDC 2,5/ 3-PV-5,0 - Direct connector

1016292

<https://www.phoenixcontact.com/us/products/1016292>



PCB direct plug, nominal cross section: 2.5 mm², color: green, nominal current: 12 A, rated voltage (III/2): 320 V, contact surface: Tin, number of potentials: 6, number of rows: 2, number of positions: 3, number of connections: 6, product range: CDDC 2,5/...-PV, pitch: 5 mm, connection method: Crimp connection, mounting: SKEDD - Direct plug-in technology, conductor/PCB connection direction: 90 °, pin layout: Linear pinning, plug-in system: SKEDD, locking: Snap-in locking, mounting: Self-locking flange, type of packaging: packed in cardboard

CDDC 2,5/ 4-PV-5,0 - Direct connector

1016290

<https://www.phoenixcontact.com/us/products/1016290>



PCB direct plug, nominal cross section: 2.5 mm², color: green, nominal current: 12 A, rated voltage (III/2): 320 V, contact surface: Tin, number of potentials: 8, number of rows: 2, number of positions: 4, number of connections: 8, product range: CDDC 2,5/...-PV, pitch: 5 mm, connection method: Crimp connection, mounting: SKEDD - Direct plug-in technology, conductor/PCB connection direction: 90 °, pin layout: Linear pinning, plug-in system: SKEDD, locking: Snap-in locking, mounting: Self-locking flange, type of packaging: packed in cardboard

CDC-MP 0,14-0,5-R - Crimp contact

1016663

<https://www.phoenixcontact.com/us/products/1016663>



CDDC 2,5/ 5-PV-5,0 - Direct connector

1016289

<https://www.phoenixcontact.com/us/products/1016289>



PCB direct plug, nominal cross section: 2.5 mm², color: green, nominal current: 12 A, rated voltage (III/2): 320 V, contact surface: Tin, number of potentials: 10, number of rows: 2, number of positions: 5, number of connections: 10, product range: CDDC 2,5/...-PV, pitch: 5 mm, connection method: Crimp connection, mounting: SKEDD - Direct plug-in technology, conductor/PCB connection direction: 90 °, pin layout: Linear pinning, plug-in system: SKEDD, locking: Snap-in locking, mounting: Self-locking flange, type of packaging: packed in cardboard

CDDC 2,5/ 6-PV-5,0 - Direct connector

1016288

<https://www.phoenixcontact.com/us/products/1016288>



PCB direct plug, nominal cross section: 2.5 mm², color: green, nominal current: 12 A, rated voltage (III/2): 320 V, contact surface: Tin, number of potentials: 12, number of rows: 2, number of positions: 6, number of connections: 12, product range: CDDC 2,5/...-PV, pitch: 5 mm, connection method: Crimp connection, mounting: SKEDD - Direct plug-in technology, conductor/PCB connection direction: 90 °, pin layout: Linear pinning, plug-in system: SKEDD, locking: Snap-in locking, mounting: Self-locking flange, type of packaging: packed in cardboard

CDC-MP 0,14-0,5-R - Crimp contact

1016663

<https://www.phoenixcontact.com/us/products/1016663>



CDDC 2,5/ 7-PV-5,0 - Direct connector

1016286

<https://www.phoenixcontact.com/us/products/1016286>

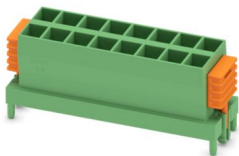


PCB direct plug, nominal cross section: 2.5 mm², color: green, nominal current: 12 A, rated voltage (III/2): 320 V, contact surface: Tin, number of potentials: 14, number of rows: 2, number of positions: 7, number of connections: 14, product range: CDDC 2,5/...-PV, pitch: 5 mm, connection method: Crimp connection, mounting: SKEDD - Direct plug-in technology, conductor/PCB connection direction: 90 °, pin layout: Linear pinning, plug-in system: SKEDD, locking: Snap-in locking, mounting: Self-locking flange, type of packaging: packed in cardboard

CDDC 2,5/ 8-PV-5,0 - Direct connector

1016285

<https://www.phoenixcontact.com/us/products/1016285>



PCB direct plug, nominal cross section: 2.5 mm², color: green, nominal current: 12 A, rated voltage (III/2): 320 V, contact surface: Tin, number of potentials: 16, number of rows: 2, number of positions: 8, number of connections: 16, product range: CDDC 2,5/...-PV, pitch: 5 mm, connection method: Crimp connection, mounting: SKEDD - Direct plug-in technology, conductor/PCB connection direction: 90 °, plug-in system: SKEDD, locking: Snap-in locking, mounting: Self-locking flange, type of packaging: packed in cardboard

CDC-MP 0,14-0,5-R - Crimp contact

1016663

<https://www.phoenixcontact.com/us/products/1016663>



CDDC 2,5/ 9-PV-5,0 - Direct connector

1016280

<https://www.phoenixcontact.com/us/products/1016280>



PCB direct plug, nominal cross section: 2.5 mm², color: green, nominal current: 12 A, rated voltage (III/2): 320 V, contact surface: Tin, number of potentials: 18, number of rows: 2, number of positions: 9, number of connections: 18, product range: CDDC 2,5/...-PV, pitch: 5 mm, connection method: Crimp connection, mounting: SKEDD - Direct plug-in technology, conductor/PCB connection direction: 90 °, plug-in system: SKEDD, locking: Snap-in locking, mounting: Self-locking flange, type of packaging: packed in cardboard

CDDC 2,5/10-PV-5,0 - Direct connector

1016279

<https://www.phoenixcontact.com/us/products/1016279>



PCB direct plug, nominal cross section: 2.5 mm², color: green, nominal current: 12 A, rated voltage (III/2): 320 V, contact surface: Tin, number of potentials: 20, number of rows: 2, number of positions: 10, number of connections: 20, product range: CDDC 2,5/...-PV, pitch: 5 mm, connection method: Crimp connection, mounting: SKEDD - Direct plug-in technology, conductor/PCB connection direction: 90 °, plug-in system: SKEDD, locking: Snap-in locking, mounting: Self-locking flange, type of packaging: packed in cardboard

CDC-MP 0,14-0,5-R - Crimp contact

1016663

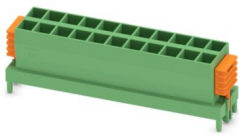
<https://www.phoenixcontact.com/us/products/1016663>



CDDC 2,5/11-PV-5,0 - Direct connector

1016278

<https://www.phoenixcontact.com/us/products/1016278>



PCB direct plug, nominal cross section: 2.5 mm², color: green, nominal current: 12 A, rated voltage (III/2): 320 V, contact surface: Tin, number of potentials: 22, number of rows: 2, number of positions: 11, number of connections: 22, product range: CDDC 2,5/...-PV, pitch: 5 mm, connection method: Crimp connection, mounting: SKEDD - Direct plug-in technology, conductor/PCB connection direction: 90 °, plug-in system: SKEDD, locking: Snap-in locking, mounting: Self-locking flange, type of packaging: packed in cardboard

CDDC 2,5/12-PV-5,0 - Direct connector

1016277

<https://www.phoenixcontact.com/us/products/1016277>



PCB direct plug, nominal cross section: 2.5 mm², color: green, nominal current: 12 A, rated voltage (III/2): 320 V, contact surface: Tin, number of potentials: 24, number of rows: 2, number of positions: 12, number of connections: 24, product range: CDDC 2,5/...-PV, pitch: 5 mm, connection method: Crimp connection, mounting: SKEDD - Direct plug-in technology, conductor/PCB connection direction: 90 °, plug-in system: SKEDD, locking: Snap-in locking, mounting: Self-locking flange, type of packaging: packed in cardboard

CDC-MP 0,14-0,5-R - Crimp contact

1016663

<https://www.phoenixcontact.com/us/products/1016663>



CDDC 2,5/13-PV-5,0 - Direct connector

1016276

<https://www.phoenixcontact.com/us/products/1016276>



PCB direct plug, nominal cross section: 2.5 mm², color: green, nominal current: 12 A, rated voltage (III/2): 320 V, contact surface: Tin, number of potentials: 26, number of rows: 2, number of positions: 13, number of connections: 26, product range: CDDC 2,5/...-PV, pitch: 5 mm, connection method: Crimp connection, mounting: SKEDD - Direct plug-in technology, conductor/PCB connection direction: 90 °, plug-in system: SKEDD, locking: Snap-in locking, mounting: Self-locking flange, type of packaging: packed in cardboard

CDDC 2,5/14-PV-5,0 - Direct connector

1016274

<https://www.phoenixcontact.com/us/products/1016274>



PCB direct plug, nominal cross section: 2.5 mm², color: green, nominal current: 12 A, rated voltage (III/2): 320 V, contact surface: Tin, number of potentials: 28, number of rows: 2, number of positions: 14, number of connections: 28, product range: CDDC 2,5/...-PV, pitch: 5 mm, connection method: Crimp connection, mounting: SKEDD - Direct plug-in technology, conductor/PCB connection direction: 90 °, plug-in system: SKEDD, locking: Snap-in locking, mounting: Self-locking flange, type of packaging: packed in cardboard

CDC-MP 0,14-0,5-R - Crimp contact

1016663

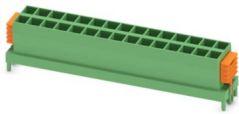
<https://www.phoenixcontact.com/us/products/1016663>



CDDC 2,5/15-PV-5,0 - Direct connector

1016273

<https://www.phoenixcontact.com/us/products/1016273>



PCB direct plug, nominal cross section: 2.5 mm², color: green, nominal current: 12 A, rated voltage (III/2): 320 V, contact surface: Tin, number of potentials: 30, number of rows: 2, number of positions: 15, number of connections: 30, product range: CDDC 2,5/...-PV, pitch: 5 mm, connection method: Crimp connection, mounting: SKEDD - Direct plug-in technology, conductor/PCB connection direction: 90 °, plug-in system: SKEDD, locking: Snap-in locking, mounting: Self-locking flange, type of packaging: packed in cardboard

CDDC 2,5/16-PV-5,0 - Direct connector

1016272

<https://www.phoenixcontact.com/us/products/1016272>



PCB direct plug, nominal cross section: 2.5 mm², color: green, nominal current: 12 A, rated voltage (III/2): 320 V, contact surface: Tin, number of potentials: 32, number of rows: 2, number of positions: 16, number of connections: 32, product range: CDDC 2,5/...-PV, pitch: 5 mm, connection method: Crimp connection, mounting: SKEDD - Direct plug-in technology, conductor/PCB connection direction: 90 °, plug-in system: SKEDD, locking: Snap-in locking, mounting: Self-locking flange, type of packaging: packed in cardboard

Phoenix Contact 2024 © - all rights reserved
<https://www.phoenixcontact.com>

Phoenix Contact USA
586 Fulling Mill Road
Middletown, PA 17057, United States
(+717) 944-1300
info@phoenixcon.com