



Connectors > Automotive Connectors > Automotive Housings



Number of Positions: 1

Connector & Housing Type: **Housing for Male Terminals**

Sealable: **Yes**

Mating Pin Diameter: **11 mm [.433 in]**

Number of Rows: 1

Features

Product Type Features

Mixed & Hybrid Connector	Yes
Connector Shape	Rectangular
Connector & Housing Type	Housing for Male Terminals
Sealable	Yes
Primary Locking Feature	Integrated in Housing

Configuration Features

Number of Positions	1
Number of Rows	1

Electrical Characteristics

Operating Voltage	750 VDC
Nominal Voltage Architecture	12 V, 24 V, 42 V, 48 V, 80 V, 90 V, 125 V, 240 V, 500 V, 550 V, 600 V

Body Features

Cable Exit Angle	90°
Primary Product Color	Orange



Connector & Keying Code	B
-------------------------	---

Contact Features

Contact Type	Pin
Mating Pin Diameter	11 mm[.433 in]

Mechanical Attachment

Terminal Position Assurance	Yes
Strain Relief	With
Mating Alignment Type	Keyed
Mating Alignment	With
Connector Mounting Type	Cable Mount (Free-Hanging)

Housing Features

Housing Material	PA GF
------------------	-------

Dimensions

Connector Height	49.9 mm[1.96 in]
Product Width	57.7 mm[2.27 in]
Product Length	100.4 mm[3.95 in]

Usage Conditions

Operating Temperature (Max)	70 °C, 75 °C, 80 °C, 85 °C, 90 °C, 100 °C, 105 °C, 110 °C, 120 °C, 125 °C[158 °F][167 °F][176 °F][185 °F][194 °F][212 °F][221 °F][230 °F][248 °F][257 °F]
Operating Temperature Range	-40 – 125 °C[-40 – 257 °F]

Industry Standards

Compatible With Agency/Standards Products	USCAR-2
---	---------

Packaging Features

Packaging Quantity	45
Packaging Method	Carton

Other

Serviceable	No
Connector Position Assurance Capable	Yes

Product Compliance

For compliance documentation, visit the product page on TE.com>



EU RoHS Directive 2011/65/EU	Compliant
EU ELV Directive 2000/53/EC	Compliant
China RoHS 2 Directive MIIT Order No 32, 2016	No Restricted Materials Above Threshold
EU REACH Regulation (EC) No. 1907/2006	Current ECHA Candidate List: JUNE 2023 (235) Candidate List Declared Against: JUNE 2023 (235) Does not contain REACH SVHC
Halogen Content	Low Halogen - Br, Cl, F, I < 900 ppm per homogenous material. Also BFR/CFR/PVC Free
Solder Process Capability	Not reviewed for solder process capability

Product Compliance Disclaimer

This information is provided based on reasonable inquiry of our suppliers and represents our current actual knowledge based on the information they provided. This information is subject to change. The part numbers that TE has identified as EU RoHS compliant have a maximum concentration of 0.1% by weight in homogenous materials for lead, hexavalent chromium, mercury, PBB, PBDE, DBP, BBP, DEHP, DIBP, and 0.01% for cadmium, or qualify for an exemption to these limits as defined in the Annexes of Directive 2011/65/EU (RoHS2). Finished electrical and electronic equipment products will be CE marked as required by Directive 2011/65/EU. Components may not be CE marked. Additionally, the part numbers that TE has identified as EU ELV compliant have a maximum concentration of 0.1% by weight in homogenous materials for lead, hexavalent chromium, and mercury, and 0.01% for cadmium, or qualify for an exemption to these limits as defined in the Annexes of Directive 2000/53/EC (ELV). Regarding the REACH Regulations, TE’s information on SVHC in articles for this part number is still based on the European Chemical Agency (ECHA) ‘Guidance on requirements for substances in articles’(Version: 2, April 2011), applying the 0.1% weight on weight concentration threshold at the finished product level. TE is aware of the European Court of Justice ruling of September 10th, 2015 also known as O5A (Once An Article Always An Article) stating that, in case of ‘complex object’, the threshold for a SVHC must be applied to both the product as a whole and simultaneously to each of the articles forming part of its composition. TE has evaluated this ruling based on the new ECHA “Guidance on requirements for substances in articles” (June 2017, version 4.0) and will be updating its statements accordingly.

Compatible Parts



TE Part # 2137740-2
HV1100 1POS HEADER 90 DEG ASSY
SLD



TE Part # 2137735-1
UPPER INSERT ASSY



TE Part # 2137722-1
LOWER INSERT ASSY

Also in the Series | **HVP 1100**



Automotive Connector EMC Shielding (2)



Automotive Housings(2)



Connector Seals & Cavity Plugs(1)



High Voltage Wire Processing Equipment(10)



Other Automotive Connector Accessories(2)

Customers Also Bought



TE Part #9-2141157-1
SHIELD CRIMP FERRULE,90DEG



TE Part #2141211-2
8MM HV,TERMINAL,F-CRIMP



TE Part #2141159-1
FINGER PROT CAP 8MM HV,90DEG



TE Part #1587985-1
INNER HSG SUBASSY, HVA280-2PHM



TE Part #4-2103015-1
PLUG SUBASSY, A, HVA280-2PHM F



TE Part #2141616-1
SHIELDING, 5+2 POS HV CONN



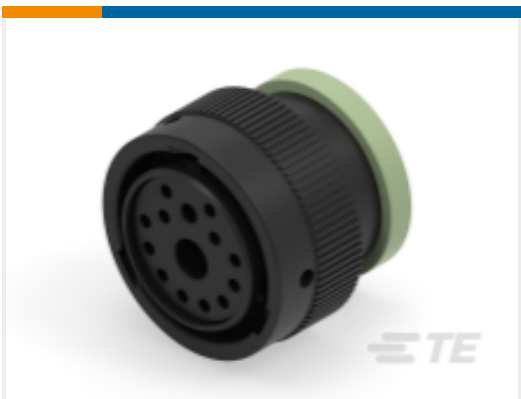
TE Part #1-2141166-1
3POS,8MM HV,REC HSG,90DEG,ASSY, SEALED



TE Part #1670815-1
RING TONGUE, IPT 70 - 120MM?



TE Part #2103013-2
CABLE SEAL RETAINER, SIZE 2, BK, HVA280



TE Part #HDP26-24-14SN-L017
PLG, 14P, BLK, N, RNG, 4/12/16, S

Documents



Product Drawings

HV1100 1POS PLUG HSG ASSY SLD 90 DEG

English

CAD Files

3D PDF

3D

Customer View Model

ENG_CVM_CVM_2137704-2_A.2d_dxf.zip

English

Customer View Model

ENG_CVM_CVM_2137704-2_A.3d_igs.zip

English

Customer View Model

ENG_CVM_CVM_2137704-2_A.3d_stp.zip

English

By downloading the CAD file I accept and agree to the [Terms and Conditions](#) of use.

Product Specifications

Application Specification

English