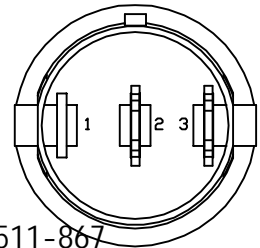
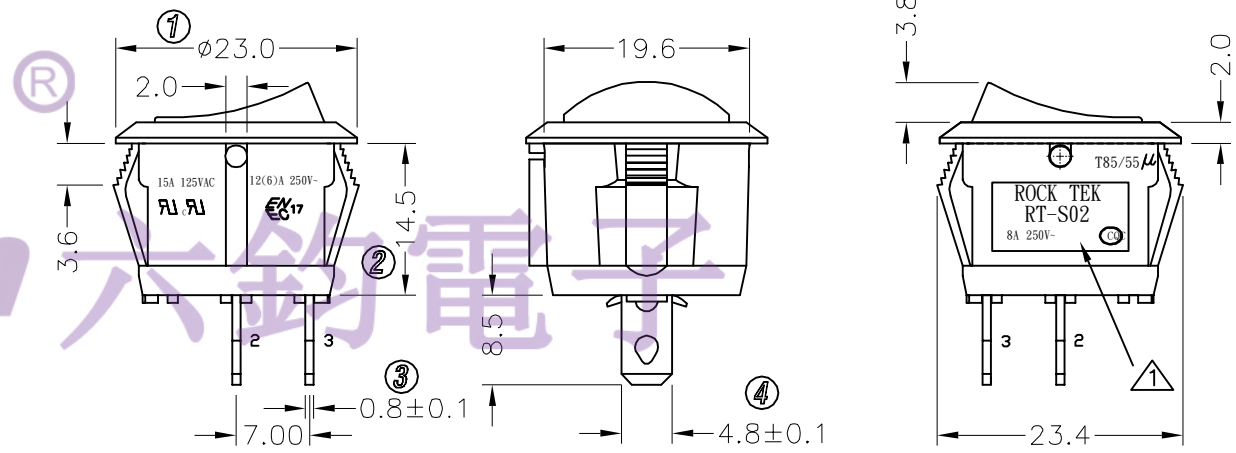
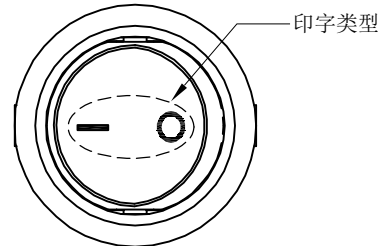
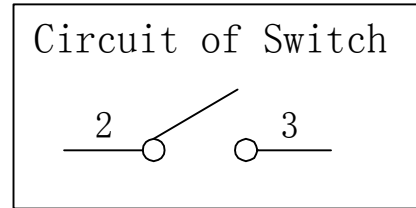
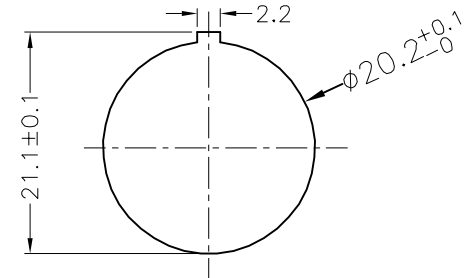


NOTES:

- 1.Circuit: ON/OFF
- 2.Operation force: 500±200gf
- 3.Electrical rating: 8A 250VAC (UL; CUL; CQC)  
15A 125VAC (UL; CUL; CQC)  
12(6)A 250VAC (ENEC17)
- 4.Contact resistance: <50mΩ
- 5.Insulation resistance: >100MΩ  
(500VDC between open contacts)
- 6.Dielectric strength: >1500V 1 minute



Panel cut out(Thickness: 3mm Max)



电话 : 0769-82310511-867  
邮箱 : hooya89@hooya.hk

品名	颜色		印字类型
	基座	上盖	
RT-S02-117-R4NBR	黑色	红色	
RT-S02-117-R4NBB	黑色	黑色	
RT-S02-117-R4NWW	白色	白色	
RT-S02-117-R4NFF	棕色	棕色	
RT-S02-117-R2NBR	黑色	红色	
RT-S02-117-R3NAA	灰色	灰色	
RT-S02-117-R5NBB	黑色	黑色	
RT-S02-117-R22NBR	黑色	红色	
RT-S02-117-R1NBB	黑色	黑色	

NO	DESCRIPTION	NO	DESCRIPTION	DIMENSIONAL TOLERANCES		APPROVED	CHECKED	DESIGN	DRAWN	ALL SIZE ARE IN		DRAWING NO.	REV.
				RANGE	TOLERANCE					MM	NO		
				X	±0.30				LMC	MAT'L	***		
				X.X	±0.20				2020.11.14	MATERIAL NO.			
				X.XX	±0.10								
				ANGLES	±1'	LECION ELECTRONIC & HARDWARE CO., LTD.				RT-S02-117-R1NBB	WIF108020	B1	