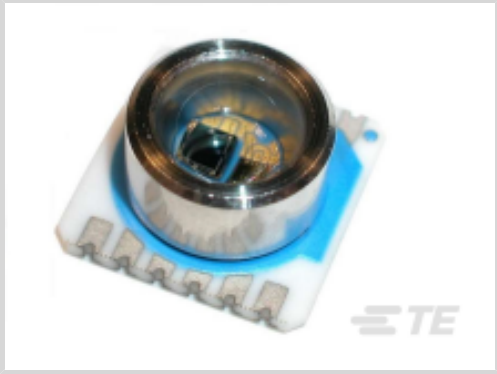




Sensors > Pressure Sensors > Board Mount Pressure Sensors



Board Level Pressure Sensor Type: **Digital Pressure and Altimeter Sensor Modules**
Board Level Pressure Sensor Style: **Absolute**
Pressure: **1000 mbar**
Output/Span: **16 bit ADC**
Board Level Pressure Sensor Accuracy: **±1.5mbar**

Features

Product Type Features

Board Level Pressure Sensor Type	Digital Pressure and Altimeter Sensor Modules
Board Level Pressure Sensor Style	Absolute

Electrical Characteristics

Board Level Pressure Sensor Supply Voltage	2.2 – 3.6 V
--	-------------

Dimensions

Dimensions	9 x 9 mm[.35 x .35 in]
------------	------------------------

Usage Conditions

Operating Temperature Range	-40 – 125 °C[-40 – 257 °F]
-----------------------------	----------------------------

Operation/Application

Resolution	.1
Pressure	1000 mbar
Output/Span	16 bit ADC
Board Level Pressure Sensor Accuracy	±1.5mbar

Packaging Features

Board Level Pressure Sensor Package	Surface Mountable
-------------------------------------	-------------------

Other



Sensor Options	No Option
----------------	-----------

Product Compliance

For compliance documentation, visit the product page on TE.com>

EU RoHS Directive 2011/65/EU	Compliant with Exemptions
EU ELV Directive 2000/53/EC	Compliant
China RoHS 2 Directive MIIT Order No 32, 2016	Restricted Materials Above Threshold
EU REACH Regulation (EC) No. 1907/2006	Current ECHA Candidate List: JUNE 2023 (235) Candidate List Declared Against: JUNE 2023 (235) SVHC > Threshold: Pb (.11% in Component Part) Article Safe Usage Statements: Do not eat, drink or smoke when using this product. Wash thoroughly after handling. Recycle if possible and dispose of the article by following all applicable governmental regulations relevant to your geographic location.
Halogen Content	Low Bromine/Chlorine - Br and Cl < 900 ppm per homogenous material. Also BFR /CFR/PVC Free
Solder Process Capability	Not reviewed for solder process capability

Product Compliance Disclaimer

This information is provided based on reasonable inquiry of our suppliers and represents our current actual knowledge based on the information they provided. This information is subject to change. The part numbers that TE has identified as EU RoHS compliant have a maximum concentration of 0.1% by weight in homogenous materials for lead, hexavalent chromium, mercury, PBB, PBDE, DBP, BBP, DEHP, DIBP, and 0.01% for cadmium, or qualify for an exemption to these limits as defined in the Annexes of Directive 2011/65/EU (RoHS2). Finished electrical and electronic equipment products will be CE marked as required by Directive 2011/65/EU. Components may not be CE marked. Additionally, the part numbers that TE has identified as EU ELV compliant have a maximum concentration of 0.1% by weight in homogenous materials for lead, hexavalent chromium, and mercury, and 0.01% for cadmium, or qualify for an exemption to these limits as defined in the Annexes of Directive 2000/53/EC (ELV). Regarding the REACH Regulation, the information TE provides on SVHC in articles for this part number is based on the latest European Chemicals Agency (ECHA) ‘Guidance on requirements for substances in articles’ posted at this URL: <https://echa.europa.eu/guidance-documents/guidance-on-reach>

Compatible Parts



TE Part # 325540009-00
MS5540-CM 1BAR WHITE GEL TUBE



TE Part # 20008669-50
MS5839-02BA36 CL RESISTANT LS
T&R SEN

Also in the Series | MEAS MS5534C



Board Mount Pressure Sensors(1)

Customers Also Bought



TE Part #1625890-6
2W SM M/OX 5% 10R



TE Part #1-1625892-5
3W SM M/OX 5% 150R



TE Part #327043
PG SPD 22-16 COMM 22-18 MIL 6



TE Part #4-1625892-1
3W SM M/OX 5% 330R



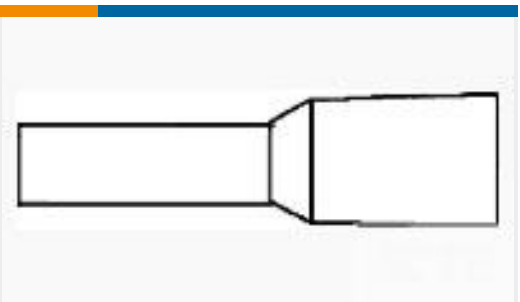
TE Part #1-1625890-2
2W SM M/OX 5% 150R



TE Part #3-1625890-8
2W SM M/OX 5% 2K2



TE Part #5-1625890-8
2W SM M/OX 5% 560R



TE Part #966292-2
FER,WIRE,PL SLV,,14/26,L8,BROWN,LP



TE Part #CSE-SGAM-305-SGFB
SMA to SMA 305mm RG316

Documents

CAD Files

3D PDF

3D

Customer View Model

ENG_CVM_CVM_325534009-50_1.2d_dxf.zip

English

Customer View Model

ENG_CVM_CVM_325534009-50_1.3d_igs.zip



English

Customer View Model

[ENG_CVM_CVM_325534009-50_1.3d_stp.zip](#)

English

By downloading the CAD file I accept and agree to the [Terms and Conditions](#) of use.

Datasheets & Catalog Pages

[Data sheet](#)

English